

Anti-DMPO Nitron Adduct antibody ab23702

6 References [画像数 1](#)

製品の概要

製品名	Anti-DMPO Nitron Adduct antibody
製品の詳細	Rabbit polyclonal to DMPO Nitron Adduct
由来種	Rabbit
アプリケーション	適用あり: WB, ELISA
種交差性	交差種: Species independent
免疫原	5,5-dimethyl-2-(8-octanoic acid)-1-pyrroline-N-oxide conjugated to Ovalbumin.
特記事項	<p>Measurement of protein radicals is now possible with the development of the "spin trap immunoassay" (please see refs 1,2). Compared to traditional techniques, immunodetection of spin trap products allows a higher level of sensitivity and throughput with greatly reduced sample consumption.</p> <p>The Life Science industry has been in the grips of a reproducibility crisis for a number of years. Abcam is leading the way in addressing this with our range of recombinant monoclonal antibodies and knockout edited cell lines for gold-standard validation. Please check that this product meets your needs before purchasing.</p> <p>If you have any questions, special requirements or concerns, please send us an inquiry and/or contact our Support team ahead of purchase. Recommended alternatives for this product can be found below, along with publications, customer reviews and Q&As</p>

製品の特性

製品の状態	Liquid
保存方法	Shipped at 4°C. Upon delivery aliquot and store at -20°C. Avoid freeze / thaw cycles.
バッファー	Constituent: Whole serum
精製度	Whole antiserum
一次抗体 備考	Measurement of protein radicals is now possible with the development of the "spin trap immunoassay" (please see refs 1,2). Compared to traditional techniques, immunodetection of spin trap products allows a higher level of sensitivity and throughput with greatly reduced sample consumption.
ポリ/モノ	ポリクローナル

アプリケーション

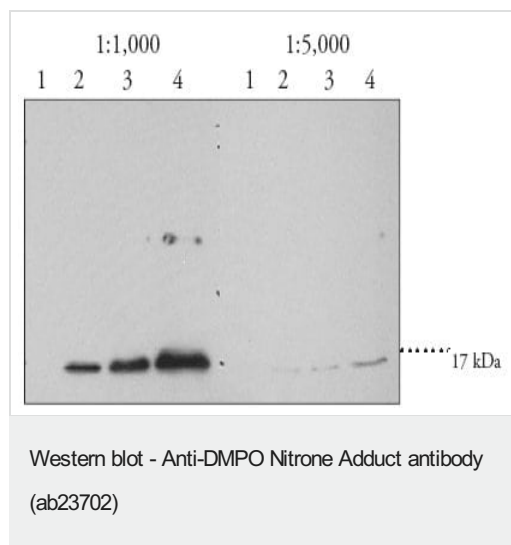
The Abpromise guarantee Abpromise保証は、 次のテスト済みアプリケーションにおけるab23702の使用に適用されます
アプリケーションノートには、推奨の開始希釈率がありますが、適切な希釈率につきましてはご検討ください。

アプリケーション	Abreviews	特記事項
WB		1/1000 - 1/5000. Detects a band of approximately 17 kDa.
ELISA		1/1000 - 1/5000.

ターゲット情報

関連性 For measurement of protein radicals; some proteins with endogenous peroxidase activity are especially susceptible to forming DMPO adducts.

画像



All lanes : Anti-DMPO Nitron Adduct antibody (ab23702)

Lane 1 : Metmyoglobin at 3 μ l

Lane 2 : Metmyoglobin-DMPO at 3 μ l

Lane 3 : Metmyoglobin-DMPO at 5 μ l

Lane 4 : Metmyoglobin-DMPO at 10 μ l

Observed band size: 17 kDa

ab23702 was used at a concentration of 1/1000 or 1/5000, as noted at the top of the image.

Please note: All products are "FOR RESEARCH USE ONLY. NOT FOR USE IN DIAGNOSTIC PROCEDURES"

Our Abpromise to you: Quality guaranteed and expert technical support

- Replacement or refund for products not performing as stated on the datasheet
- Valid for 12 months from date of delivery
- Response to your inquiry within 24 hours
- We provide support in Chinese, English, French, German, Japanese and Spanish

- Extensive multi-media technical resources to help you
- We investigate all quality concerns to ensure our products perform to the highest standards

If the product does not perform as described on this datasheet, we will offer a refund or replacement. For full details of the Abpromise, please visit <https://www.abcam.co.jp/abpromise> or contact our technical team.

Terms and conditions

- Guarantee only valid for products bought direct from Abcam or one of our authorized distributors