


### Anti-DMC1 antibody ab96613

1 Abbreviations 2 References [両極数?](#)

**医薬用外劇物**

#### 製品の概要

製品名	Anti-DMC1 antibody
製品の詳細	Rabbit polyclonal to DMC1
由来種	Rabbit
アプリケーション	<b>適用あり:</b> WB, IHC-P
種交差性	<b>交差種:</b> Human <b>交差が予測される動物種:</b> Mouse, Rat  <b>非交差種:</b> Arabidopsis thaliana
免疫原	Recombinant protein fragment corresponding to a region within amino acids 1 and 176 of Human DMC1 (NP_008999).
ポジティブ・コントロール	WB: 293T, HeLa or Raji cell lysate, MOLT4 whole cell lysate; IHC-P: Cal27 xenograft.
特記事項	<p>The Life Science industry has been in the grips of a reproducibility crisis for a number of years. Abcam is leading the way in addressing this with our range of recombinant monoclonal antibodies and knockout edited cell lines for gold-standard validation. Please check that this product meets your needs before purchasing.</p> <p>If you have any questions, special requirements or concerns, please send us an inquiry and/or contact our Support team ahead of purchase. Recommended alternatives for this product can be found below, along with publications, customer reviews and Q&amp;As</p>

#### 製品の特性

製品の状態	Liquid
保存方法	Shipped at 4°C. Upon delivery aliquot and store at -20°C or -80°C. Avoid repeated freeze / thaw cycles.
バッファー	pH: 7.00 Preservative: 0.01% Thimerosal (merthiolate) Constituents: 1.21% Tris, 0.75% Glycine, 20% Glycerol (glycerin, glycerine)
精製度	Immunogen affinity purified
ポリ/モノ	ポリクローナル
アイソタイプ	IgG

## アプリケーション

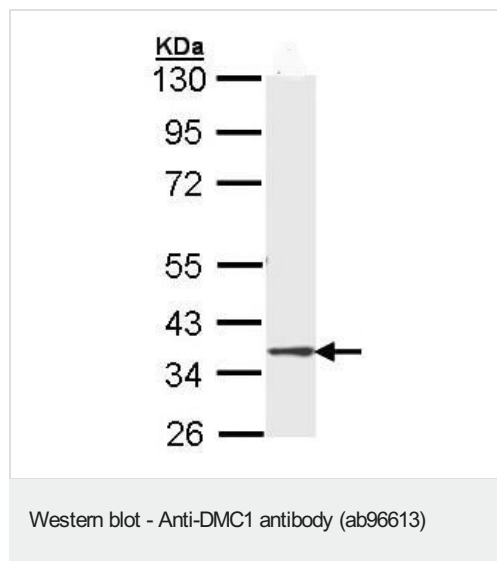
**The Abpromise guarantee** Abpromise保証は、次のテスト済みアプリケーションにおけるab96613の使用に適用されます  
アプリケーションノートには、推奨の開始希釈率がありますが、適切な希釈率につきましてはご検討ください。

アプリケーション	Abreviews	特記事項
WB		1/500 - 1/3000. Predicted molecular weight: 38 kDa.
IHC-P		1/100 - 1/500.

## ターゲット情報

機能	May participate in meiotic recombination, specifically in homologous strand assimilation, which is required for the resolution of meiotic double-strand breaks.
配列類似性	Belongs to the RecA family, DMC1 subfamily. Contains 1 HhH domain.
細胞内局在	Nucleus. Chromosome.

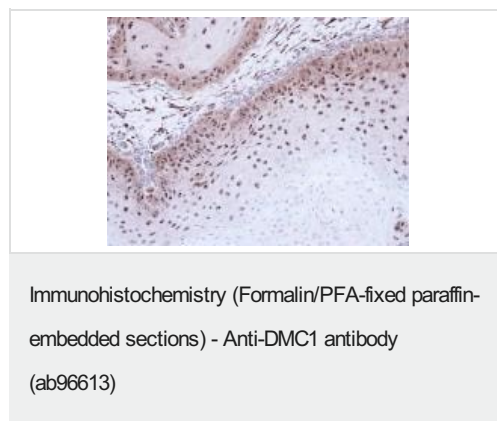
## 画像



Anti-DMC1 antibody (ab96613) at 1/1000 dilution + MOLT4 whole cell lysate at 30 µg

**Predicted band size:** 38 kDa

10% SDS PAGE



Immunohistochemical analysis of paraffin-embedded Cal27 xenograft, using ab96613 at 1/500 dilution.

**Please note:** All products are "FOR RESEARCH USE ONLY. NOT FOR USE IN DIAGNOSTIC PROCEDURES"

### **Our Abpromise to you: Quality guaranteed and expert technical support**

---

- Replacement or refund for products not performing as stated on the datasheet
- Valid for 12 months from date of delivery
- Response to your inquiry within 24 hours
  
- We provide support in Chinese, English, French, German, Japanese and Spanish
- Extensive multi-media technical resources to help you
- We investigate all quality concerns to ensure our products perform to the highest standards

If the product does not perform as described on this datasheet, we will offer a refund or replacement. For full details of the Abpromise, please visit <https://www.abcam.co.jp/abpromise> or contact our technical team.

### **Terms and conditions**

---

- Guarantee only valid for products bought direct from Abcam or one of our authorized distributors