

### Anti-DIRAS1 antibody ab65139

画像数 1

#### 製品の概要

製品名	Anti-DIRAS1 antibody
製品の詳細	Rabbit polyclonal to DIRAS1
由来種	Rabbit
アプリケーション	<b>適用あり:</b> WB
種交差性	<b>交差種:</b> Human
免疫原	Synthetic peptide corresponding to Human DIRAS1 aa 100-200 (C terminal). Database link: <a href="#">O95057</a>
ポジティブ・コントロール	Extracts from Hela and HepG2 cells
特記事項	<p>The Life Science industry has been in the grips of a reproducibility crisis for a number of years. Abcam is leading the way in addressing this with our range of recombinant monoclonal antibodies and knockout edited cell lines for gold-standard validation. Please check that this product meets your needs before purchasing.</p> <p>If you have any questions, special requirements or concerns, please send us an inquiry and/or contact our Support team ahead of purchase. Recommended alternatives for this product can be found below, along with publications, customer reviews and Q&amp;As</p>

#### 製品の特性

製品の状態	Liquid
保存方法	Shipped at 4°C. Store at -20°C. Stable for 12 months at -20°C.
バッファー	<p>pH: 7.40</p> <p>Preservative: 0.02% Sodium azide</p> <p>Constituents: PBS, 50% Glycerol (glycerin, glycerine), 0.87% Sodium chloride</p>
精製度	Without Mg <sup>2+</sup> and Ca <sup>2+</sup>
ポリ/モノ	Immunogen affinity purified
アイソタイプ	ポリクローナル
	IgG

#### アプリケーション

## The Abpromise guarantee

**Abpromise保証は、次のテスト済みアプリケーションにおけるab65139の使用に適用されます**

アプリケーションノートには、推奨の開始希釈率がありますが、適切な希釈率につきましてはご検討ください。

アプリケーション	Abreviews	特記事項
WB		1/500 - 1/1000. Detects a band of approximately 22 kDa (predicted molecular weight: 22 kDa).

## ターゲット情報

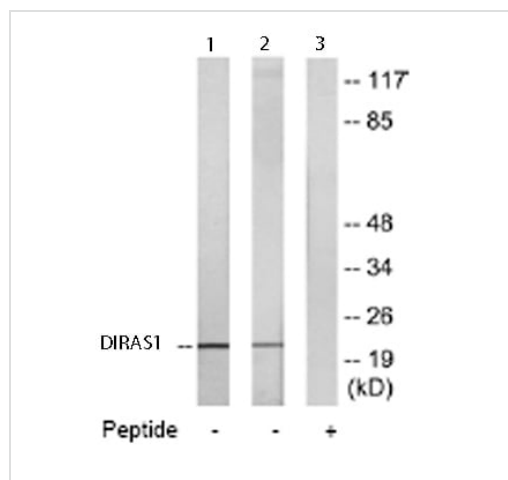
### 関連性

The three human RAS genes encode highly related 188 to 189 amino acid proteins, designated H-Ras, N-Ras and K-Ras4A and K-Ras4B (the two K-Ras proteins arise from alternative gene splicing). Ras proteins function as binary molecular switches that control intracellular signaling networks. Ras-regulated signal pathways control such processes as actin cytoskeletal integrity, proliferation, differentiation, cell adhesion, apoptosis, and cell migration. Ras and ras-related proteins are often deregulated in cancers, leading to increased invasion and metastasis, and decreased apoptosis. DIRAS1 displays low GTPase activity and exists predominantly in the GTP-bound form. It is highly expressed in heart and brain.

### 細胞内局在

Cell membrane; Lipid-anchor; Cytoplasmic side

## 画像



Western blot - Anti-DIRAS1 antibody -  
Carboxyterminal end (ab65139)

**All lanes :** Anti-DIRAS1 antibody (ab65139) at 1/500 dilution

**Lane 1 :** Extracts from HeLa cells

**Lane 2 :** Extracts from HepG2 cells

**Lane 3 :** Extracts from HepG2 cells, plus immunising peptide

**Predicted band size:** 22 kDa

**Observed band size:** 22 kDa

The amount of positive control loading for the WB is 5-30 ug of total protein.

The amount of the peptide for the WB is 5-10 ug.

**Please note:** All products are "FOR RESEARCH USE ONLY. NOT FOR USE IN DIAGNOSTIC PROCEDURES"

## Our Abpromise to you: Quality guaranteed and expert technical support

- Replacement or refund for products not performing as stated on the datasheet
- Valid for 12 months from date of delivery
- Response to your inquiry within 24 hours

- We provide support in Chinese, English, French, German, Japanese and Spanish
- Extensive multi-media technical resources to help you
- We investigate all quality concerns to ensure our products perform to the highest standards

If the product does not perform as described on this datasheet, we will offer a refund or replacement. For full details of the Abpromise, please visit <https://www.abcam.co.jp/abpromise> or contact our technical team.

#### **Terms and conditions**

---

- Guarantee only valid for products bought direct from Abcam or one of our authorized distributors