

### Anti-DFFB/CAD antibody ab8408

画像数 2

#### 製品の概要

製品名	Anti-DFFB/CAD antibody
製品の詳細	Rabbit polyclonal to DFFB/CAD
由来種	Rabbit
アプリケーション	<b>適用あり:</b> ICC/IF, WB
種交差性	<b>交差種:</b> Human
免疫原	Synthetic peptide corresponding to Human DFFB/CAD aa 3-18. Sequence: QKPKSVKLRALRSPKRC  Database link: <b><a href="#">O76075</a></b> (Peptide available as <b><a href="#">ab8440</a></b> )   <b><a href="#">Run BLAST with</a></b>  <b><a href="#">Run BLAST with</a></b>
ポジティブ・コントロール	K562 or Jurkat whole cell lysate A 40 kDa band can be detected.
特記事項	<p>The Life Science industry has been in the grips of a reproducibility crisis for a number of years. Abcam is leading the way in addressing this with our range of recombinant monoclonal antibodies and knockout edited cell lines for gold-standard validation. Please check that this product meets your needs before purchasing.</p> <p>If you have any questions, special requirements or concerns, please send us an inquiry and/or contact our Support team ahead of purchase. Recommended alternatives for this product can be found below, along with publications, customer reviews and Q&amp;As</p>

#### 製品の特性

製品の状態	Liquid
保存方法	Shipped at 4°C. Store at +4°C.
バッファー	pH: 7.2 Preservative: 0.02% Sodium azide
精製度	Affinity purified
ポリモノ	ポリクローナル
アイソタイプ	IgG
軽鎖の種類	unknown

## アプリケーション

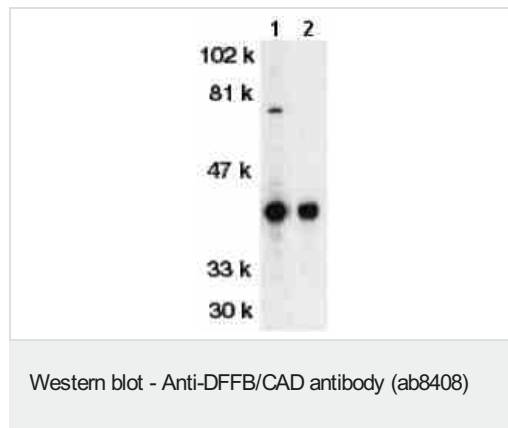
**The Abpromise guarantee** **Abpromise保証は、** 次のテスト済みアプリケーションにおけるab8408の使用に適用されます  
アプリケーションノートには、推奨の開始希釈率がありますが、適切な希釈率につきましてはご検討ください。

アプリケーション	Abreviews	特記事項
ICC/IF		Use a concentration of 5 µg/ml.
WB		1/500 - 1/2000. Detects a band of approximately 40 kDa.

## ターゲット情報

機能	Nuclease that induces DNA fragmentation and chromatin condensation during apoptosis. Degrades naked DNA and induces apoptotic morphology.
配列類似性	Contains 1 CIDE-N domain.
細胞内局在	Cytoplasm. Nucleus.

## 画像

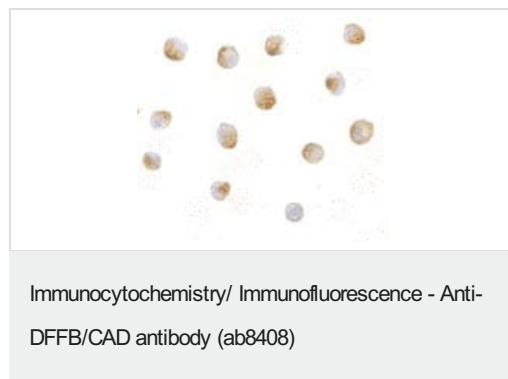


**All lanes :** Anti-DFFB/CAD antibody (ab8408) at 1/500 dilution

**Lane 1 :** Jurkat whole cell lysate

**Lane 2 :** K562 whole cell lysate

**Observed band size:** 40 kDa



ab8408 at 5µg/ml staining DFFB/CAD in Jurkat cells by ICC/IF.

**Please note:** All products are "FOR RESEARCH USE ONLY. NOT FOR USE IN DIAGNOSTIC PROCEDURES"

## **Our Abpromise to you: Quality guaranteed and expert technical support**

---

- Replacement or refund for products not performing as stated on the datasheet
- Valid for 12 months from date of delivery
- Response to your inquiry within 24 hours
  
- We provide support in Chinese, English, French, German, Japanese and Spanish
- Extensive multi-media technical resources to help you
- We investigate all quality concerns to ensure our products perform to the highest standards

If the product does not perform as described on this datasheet, we will offer a refund or replacement. For full details of the Abpromise, please visit <https://www.abcam.co.jp/abpromise> or contact our technical team.

## **Terms and conditions**

---

- Guarantee only valid for products bought direct from Abcam or one of our authorized distributors