

Anti-Detyrosinated alpha Tubulin antibody - Microtubule Marker ab48389

★★★★★ [11 Abreviews](#) [77 References](#) [画像数 1](#)

製品の概要

製品名	Anti-Detyrosinated alpha Tubulin antibody - Microtubule Marker
製品の詳細	Rabbit polyclonal to Detyrosinated alpha Tubulin - Microtubule Marker
由来種	Rabbit
アプリケーション	適用あり: WB
種交差性	交差種: Human
免疫原	A 10 residue synthetic peptide of the C terminal domain of human alpha Tubulin.
特記事項	<p>We are constantly working hard to ensure we provide our customers with best in class antibodies. As a result, we are pleased to offer this antibody in a purified format as of 10/11/2017. The following lots are still unpurified and still in stock as of 10/11/2017- GR315444-5, GR315444-3 GR285350-3, GR3181389-3, GR3181389-4, GR3181389-5, GR3181389-6, GR3181389-7. Lot numbers other than GR315444-5, GR315444-3 GR285350-3, GR3181389-3, GR3181389-4, GR3181389-5, GR3181389-6, GR3181389-7 will be purified. Please note that the dilutions may need to be adjusted accordingly. Purified antibodies have the advantage of being enriched for the fraction of immunoglobulin that specifically reacts with the target antigen and for having a reduction of serum proteins.</p> <p>The Life Science industry has been in the grips of a reproducibility crisis for a number of years. Abcam is leading the way in addressing this with our range of recombinant monoclonal antibodies and knockout edited cell lines for gold-standard validation. Please check that this product meets your needs before purchasing.</p> <p>If you have any questions, special requirements or concerns, please send us an inquiry and/or contact our Support team ahead of purchase. Recommended alternatives for this product can be found below, along with publications, customer reviews and Q&As</p>

製品の特性

製品の状態	Liquid
保存方法	Shipped at 4°C. Store at +4°C short term (1-2 weeks). Upon delivery aliquot. Store at -20°C or -80°C. Avoid freeze / thaw cycle.
バッファー	Constituents: 1.21% Tris, 0.75% Glycine, 2% Sucrose
精製度	Protein A purified

ポリモノ

ポリクローナル

アイソタイプ

IgG

アプリケーション

The Abpromise guarantee

Abpromise保証は、次のテスト済みアプリケーションにおけるab48389の使用に適用されます

アプリケーションノートには、推奨の開始希釈率がありますが、適切な希釈率につきましてはご確認ください。

アプリケーション	Abreviews	特記事項
WB	★★★★★ (6)	1/500 - 1/2000. Detects a band of approximately 51 kDa (predicted molecular weight: 50 kDa).

ターゲット情報

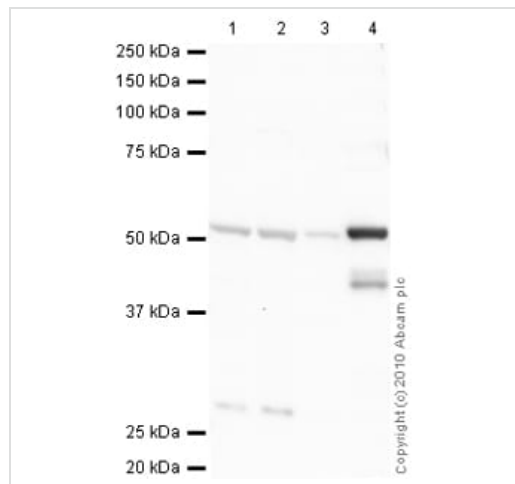
関連性

Microtubules are required for many well characterized functions in eukaryotic cells, including the movement of chromosomes in mitosis and meiosis, intracellular transport, establishment and maintenance of cellular morphology, cell growth, cell migration and morphogenesis in multicellular organisms. The building block of a microtubule is the tubulin subunit, a heterodimer of alpha and beta tubulin. Both of these monomers are found in all eukaryotes, and their sequences are highly conserved. The tubulin protein is a major target of drug molecules, and consequently, tubulin inhibitors have attracted great attention as antimitotic antitumor agents for chemotherapeutic use. This antibody recognizes detyrosinated alpha tubulin, a post translational modification of alpha tubulin.

細胞内局在

Cytoplasmic

画像



Western blot - Anti-Detyrosinated alpha Tubulin antibody - Microtubule Marker (ab48389)

All lanes : Anti-Detyrosinated alpha Tubulin antibody - Microtubule Marker (ab48389) at 1/500 dilution

- Lane 1 : Saos 2 (Human epithelial-like osteosarcoma cell line) Whole Cell Lysate
- Lane 2 : U2OS (Human osteosarcoma cell line) Whole Cell Lysate
- Lane 3 : HeLa (Human epithelial carcinoma cell line) Whole Cell Lysate
- Lane 4 : Human Brain Tissue Lysate

Lysates/proteins at 10 µg per lane.

Secondary

- Lanes 1-3 : Goat polyclonal to Rabbit IgG - H&L - Pre-Adsorbed (HRP) at 1/3000 dilution
- Lane 4 : Goat polyclonal to Rabbit IgG - H&L - Pre-Adsorbed

(HRP) at 1/3000 dilution

Developed using the ECL technique.

Performed under reducing conditions.

Predicted band size: 50 kDa

Observed band size: 51 kDa

Additional bands at: 28 kDa, 44 kDa. We are unsure as to the identity of these extra bands.

Exposure time: 1 minute

Detyrosinated alpha Tubulin contains a number of potential phosphorylation sites (SwissProt) which may explain the migration pattern observed.

Please note: All products are "FOR RESEARCH USE ONLY. NOT FOR USE IN DIAGNOSTIC PROCEDURES"

Our Abpromise to you: Quality guaranteed and expert technical support

- Replacement or refund for products not performing as stated on the datasheet
- Valid for 12 months from date of delivery
- Response to your inquiry within 24 hours
- We provide support in Chinese, English, French, German, Japanese and Spanish
- Extensive multi-media technical resources to help you
- We investigate all quality concerns to ensure our products perform to the highest standards

If the product does not perform as described on this datasheet, we will offer a refund or replacement. For full details of the Abpromise, please visit <https://www.abcam.co.jp/abpromise> or contact our technical team.

Terms and conditions

- Guarantee only valid for products bought direct from Abcam or one of our authorized distributors