

Anti-delta 1 Catenin/CAS (phospho Y228) antibody [E205] ab32403

リコンビナント **RabMAb**

3 References [画像数 3](#)

製品の概要

製品名	Anti-delta 1 Catenin/CAS (phospho Y228) antibody [E205]
製品の詳細	Rabbit monoclonal [E205] to delta 1 Catenin/CAS (phospho Y228)
由来種	Rabbit
アプリケーション	適用あり: WB, IHC-P 適用なし: Flow Cyt or ICC/IF
種交差性	交差種: Human 交差が予測される動物種: Mouse, Rat 
免疫原	Synthetic peptide corresponding to Human delta 1 Catenin/CAS (phospho Y228).
ポジティブ・コントロール	WB: HeLa whole cell lysate (ab150035). IHC-P: Breast carcinoma.
特記事項	This product is a recombinant monoclonal antibody, which offers several advantages including: <ul style="list-style-type: none"> - High batch-to-batch consistency and reproducibility - Improved sensitivity and specificity - Long-term security of supply - Animal-free production For more information see here . Our RabMAb [®] technology is a patented hybridoma-based technology for making rabbit monoclonal antibodies. For details on our patents, please refer to RabMAb[®] patents .

製品の特性

製品の状態	Liquid
保存方法	Shipped at 4°C. Upon delivery aliquot and store at -20°C. Avoid freeze / thaw cycles.
バッファー	pH: 7.20 Preservative: 0.01% Sodium azide Constituents: 49% PBS, 50% Glycerol (glycerin, glycerine), 0.05% BSA
精製度	Protein A purified
ポリ/モノ	モノクローナル
クローン名	E205

アイソタイプlgG

アプリケーション

The Abpromise guarantee Abpromise保証は、次のテスト済みアプリケーションにおけるab32403の使用に適用されます
アプリケーションノートには、推奨の開始希釈率がありますが、適切な希釈率につきましてはご検討ください。

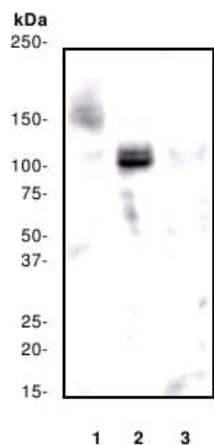
アプリケーション	Abreviews	特記事項
WB		1/5000 - 1/20000. Detects a band of approximately 115 kDa (predicted molecular weight: 108 kDa).
IHC-P		1/50. Perform heat mediated antigen retrieval with citrate buffer pH 6 before commencing with IHC staining protocol.

追加情報 Is unsuitable for Flow Cyt or ICC/IF.

ターゲット情報

機能	Binds to and inhibits the transcriptional repressor ZBTB33, which may lead to activation of target genes of the Wnt signaling pathway (By similarity). May associate with and regulate the cell adhesion properties of both C- and E-cadherins. Implicated both in cell transformation by SRC and in ligand-induced receptor signaling through the EGF, PDGF, CSF-1 and ERBB2 receptors. Promotes GLIS2 C-terminal cleavage.
組織特異性	Expressed in vascular endothelium.
配列類似性	Belongs to the beta-catenin family. Contains 10 ARM repeats.
ドメイン	A possible nuclear localization signal exists in all isoforms where Asp-626--631-Arg are deleted.
翻訳後修飾	Phosphorylated by protein-tyrosine kinases. Dephosphorylated by PTPRJ.
細胞内局在	Cytoplasm. Nucleus. Cell membrane. Interaction with GLIS2 promotes nuclear translocation (By similarity). NANOS1 induces its translocation from sites of cell-cell contact to the cytoplasm.

画像



Western blot - Anti-delta 1 Catenin/CAS (phospho Y228) antibody [E205] (ab32403)

All lanes : Anti-delta 1 Catenin/CAS (phospho Y228) antibody [E205] (ab32403)

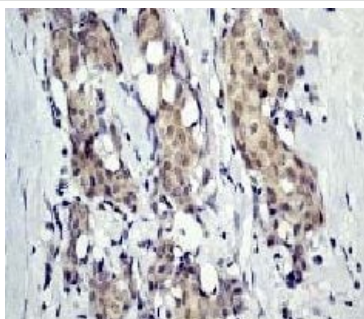
Lane 1 : HeLa cell lysate, untreated

Lane 2 : HeLa cell lysate, treated with Pervanadate

Lane 3 : HeLa cell lysate, treated with Phosphatase

Predicted band size: 108 kDa

Observed band size: 115 kDa



Immunohistochemistry (Formalin/PFA-fixed paraffin-embedded sections) - Anti-delta 1 Catenin/CAS (phospho Y228) antibody [E205] (ab32403)

Ab32403, at a 1/50 dilution, staining delta 1 Catenin/CAS in paraffin embedded breast carcinoma tissue sections by Immunohistochemistry.

Perform heat mediated antigen retrieval with citrate buffer pH 6 before commencing with IHC staining protocol.

Why choose a recombinant antibody?



Research with confidence
Consistent and reproducible results



Long-term and scalable supply
Recombinant technology



Success from the first experiment
Confirmed specificity



Ethical standards compliant
Animal-free production

Anti-delta 1 Catenin/CAS (phospho Y228) antibody [E205] (ab32403)

Please note: All products are "FOR RESEARCH USE ONLY. NOT FOR USE IN DIAGNOSTIC PROCEDURES"

Our Abpromise to you: Quality guaranteed and expert technical support

- Replacement or refund for products not performing as stated on the datasheet
- Valid for 12 months from date of delivery
- Response to your inquiry within 24 hours

- We provide support in Chinese, English, French, German, Japanese and Spanish
- Extensive multi-media technical resources to help you
- We investigate all quality concerns to ensure our products perform to the highest standards

If the product does not perform as described on this datasheet, we will offer a refund or replacement. For full details of the Abpromise, please visit <https://www.abcam.co.jp/abpromise> or contact our technical team.

Terms and conditions

- Guarantee only valid for products bought direct from Abcam or one of our authorized distributors