

Anti-DDX56/DDX21 antibody ab97648

1 References [画像数 1](#)

医薬用外劇物

製品の概要

製品名	Anti-DDX56/DDX21 antibody
製品の詳細	Rabbit polyclonal to DDX56/DDX21
由来種	Rabbit
アプリケーション	適用あり: IHC-P, WB, ICC/IF
種交差性	交差種: Human 交差が予測される動物種: Mouse, Rat, Cow 
免疫原	Recombinant fragment corresponding to Human DDX56/DDX21 aa 251-403. (AAH01235)
ポジティブ・コントロール	A549, HeLa, HepG2 and HCT116 cell lines; MCF7 xenograft ICC/IF: HeLa cells.
特記事項	<p>The Life Science industry has been in the grips of a reproducibility crisis for a number of years. Abcam is leading the way in addressing this with our range of recombinant monoclonal antibodies and knockout edited cell lines for gold-standard validation. Please check that this product meets your needs before purchasing.</p> <p>If you have any questions, special requirements or concerns, please send us an inquiry and/or contact our Support team ahead of purchase. Recommended alternatives for this product can be found below, along with publications, customer reviews and Q&As</p>

製品の特性

製品の状態	Liquid
保存方法	Shipped at 4°C. Upon delivery aliquot. Store at -20°C or -80°C. Avoid freeze / thaw cycle.
バッファー	pH: 7.00 Preservative: 0.01% Thimerosal (merthiolate) Constituents: 1.21% Tris, 0.75% Glycine, 20% Glycerol (glycerin, glycerine)
精製度	Immunogen affinity purified
ポリ/モノ	ポリクローナル
アイソタイプ	IgG

アプリケーション

The Abpromise guarantee

Abpromise保証は、次のテスト済みアプリケーションにおけるab97648の使用に適用されます

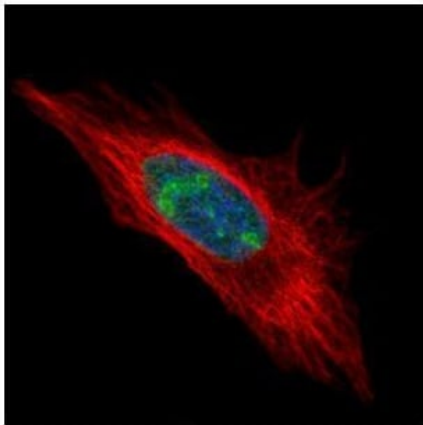
アプリケーションノートには、推奨の開始希釈率がありますが、適切な希釈率につきましてはご確認ください。

アプリケーション	Abreviews	特記事項
IHC-P		1/100 - 1/500.
WB		1/500 - 1/3000. Predicted molecular weight: 62 kDa.
ICC/IF		1/100 - 1/500.

ターゲット情報

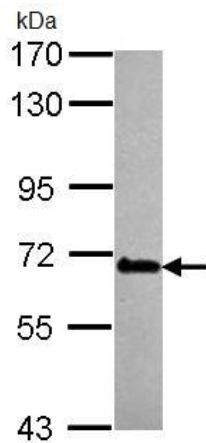
機能	May play a role in later stages of the processing of the pre-ribosomal particles leading to mature 60S ribosomal subunits. Has intrinsic ATPase activity.
組織特異性	Detected in heart, brain, liver, pancreas, placenta and lung.
配列類似性	Belongs to the DEAD box helicase family. DDX56/DBP9 subfamily. Contains 1 helicase ATP-binding domain. Contains 1 helicase C-terminal domain.
翻訳後修飾	Phosphorylated upon DNA damage, probably by ATM or ATR.
細胞内局在	Nucleus > nucleolus.

画像



Paraformaldehyde-fixed HeLa cells stained for DDX56/DDX21 using ab97648 at 1/500 dilution in ICC/IF (green). Alpha tubulin filaments are detected with an ant-tubulin antibody (red).

Immunocytochemistry/ Immunofluorescence - Anti-DDX56/DDX21 antibody (ab97648)

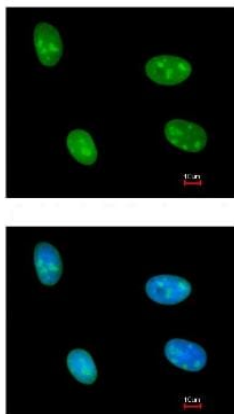


Western blot - Anti-DDX56/DDX21 antibody
(ab97648)

Anti-DDX56/DDX21 antibody (ab97648) at 1/1000 dilution + HeLa whole cell lysate at 30 µg

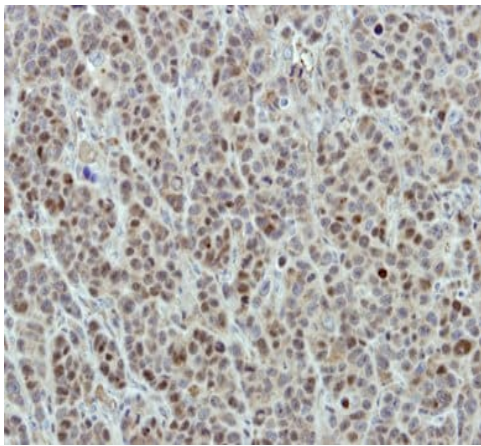
Predicted band size: 62 kDa

7.5% SDS PAGE



Immunocytochemistry/ Immunofluorescence - Anti-DDX56/DDX21 antibody (ab97648)

ab97648, at a 1/200 dilution, staining DDX56/DDX21 in paraformaldehyde fixed HeLa cells by Immunofluorescence. The lower image is costained with Hoechst 33342.



ab97648, at a 1/500 dilution, staining DDX56/DDX21 in formalin fixed, paraffin embedded MCF7 xenograft by Immunohistochemistry.

Immunohistochemistry (Formalin/PFA-fixed paraffin-embedded sections) - Anti-DDX56/DDX21 antibody (ab97648)

Please note: All products are "FOR RESEARCH USE ONLY. NOT FOR USE IN DIAGNOSTIC PROCEDURES"

Our Abpromise to you: Quality guaranteed and expert technical support

- Replacement or refund for products not performing as stated on the datasheet
- Valid for 12 months from date of delivery
- Response to your inquiry within 24 hours
- We provide support in Chinese, English, French, German, Japanese and Spanish
- Extensive multi-media technical resources to help you
- We investigate all quality concerns to ensure our products perform to the highest standards

If the product does not perform as described on this datasheet, we will offer a refund or replacement. For full details of the Abpromise, please visit <https://www.abcam.co.jp/abpromise> or contact our technical team.

Terms and conditions

- Guarantee only valid for products bought direct from Abcam or one of our authorized distributors