

### Anti-DDX5 antibody ab21696

KO 評価済

★★★★★ [6 Abreviews](#) [29 References](#) [画像数 4](#)

#### 製品の概要

製品名	Anti-DDX5 antibody
製品の詳細	Rabbit polyclonal to DDX5
由来種	Rabbit
特異性	Replenishment batches of our polyclonal antibody, ab21696 are tested in WB. Previous batches were additionally validated in ICC/IF. This application is still expected to work and is covered by our Abpromise guarantee. You may also be interested in our alternative recombinant antibody, <a href="#">ab126730</a> .
アプリケーション	<b>適用あり:</b> ICC/IF, WB
種交差性	<b>交差種:</b> Mouse, Rat, Human
免疫原	Synthetic peptide corresponding to Human DDX5 aa 600 to the C-terminus (C terminal) conjugated to keyhole limpet haemocyanin. (Peptide available as <a href="#">ab22412</a> )
ポジティブ・コントロール	This antibody gave a positive signal in the following lysates: Hela nuclear lysate MEF1 (Mouse embryonic fibroblast cell line) Whole Cell Lysate Testis (Mouse) Tissue Lysate - normal tissue PC12 (Rat adrenal pheochromocytoma cell line) Whole Cell Lysate ICC/IF: HeLa cells.
特記事項	<p>The Life Science industry has been in the grips of a reproducibility crisis for a number of years. Abcam is leading the way in addressing this with our range of recombinant monoclonal antibodies and knockout edited cell lines for gold-standard validation. Please check that this product meets your needs before purchasing.</p> <p>If you have any questions, special requirements or concerns, please send us an inquiry and/or contact our Support team ahead of purchase. Recommended alternatives for this product can be found below, along with publications, customer reviews and Q&amp;As</p>

#### 製品の特性

製品の状態	Liquid
保存方法	Shipped at 4°C. Store at +4°C short term (1-2 weeks). Upon delivery aliquot. Store at -20°C or -80°C. Avoid freeze / thaw cycle.
バッファー	pH: 7.40 Preservative: 0.02% Sodium azide

Constituent: PBS

Batches of this product that have a concentration < 1mg/ml may have BSA added as a stabilising agent. If you would like information about the formulation of a specific lot, please contact our scientific support team who will be happy to help.

精製度 Immunogen affinity purified  
ポリモノ ポリクローナル  
アイソタイプ IgG

## アプリケーション

**The Abpromise guarantee** Abpromise保証は、次のテスト済みアプリケーションにおけるab21696の使用に適用されます  
アプリケーションノートには、推奨の開始希釈率がありますが、適切な希釈率につきましてはご検討ください。

アプリケーション	Abreviews	特記事項
ICC/IF		Use a concentration of 1 µg/ml.
WB	★★★★★ (3)	Use a concentration of 1 µg/ml. Detects a band of approximately 69 kDa (predicted molecular weight: 69 kDa).

## ターゲット情報

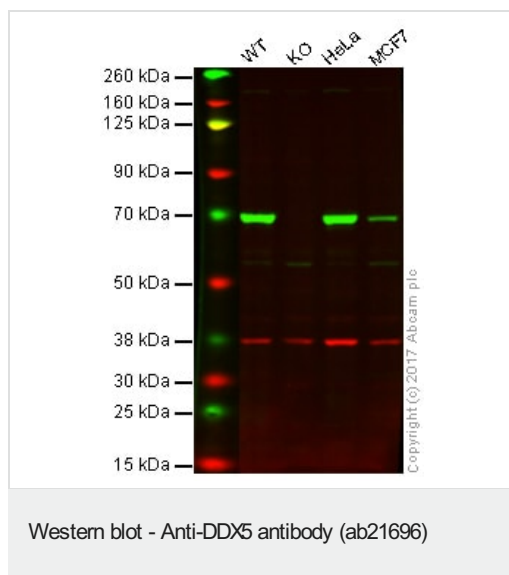
機能 RNA-dependent ATPase activity. The rate of ATP hydrolysis is highly stimulated by single-stranded RNA. May be involved in pre-mRNA splicing.

配列類似性 Belongs to the DEAD box helicase family. DDX5/DBP2 subfamily.  
Contains 1 helicase ATP-binding domain.  
Contains 1 helicase C-terminal domain.

翻訳後修飾 Arg-502 is dimethylated, probably to asymmetric dimethylarginine.

細胞内局在 Nucleus > nucleolus.

## 画像



**Lane 1:** Wild-type HAP1 whole cell lysate (20 µg)

**Lane 2:** DDX5 knockout HAP1 whole cell lysate (20 µg)

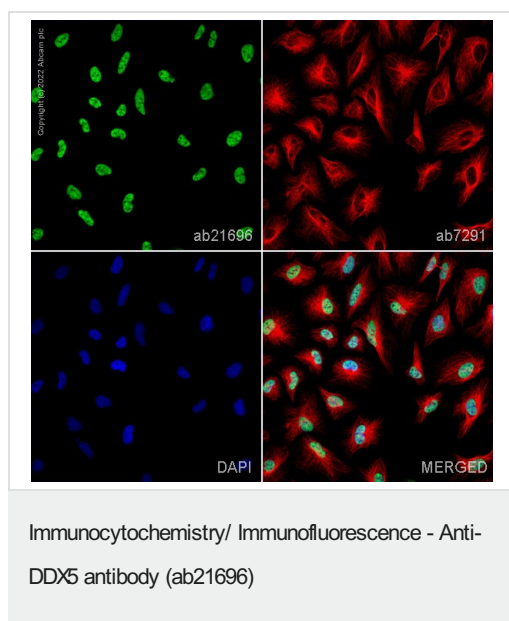
**Lane 3:** HeLa whole cell lysate (20 µg)

**Lane 4:** MCF7 whole cell lysate (20 µg)

**Lanes 1 - 4:** Merged signal (red and green). Green - ab21696 observed at 69 kDa. Red - loading control, **ab9484**, observed at 37 kDa.

ab21696 was shown to specifically react with DDX5 in wild-type HAP1 cells as signal was lost in DDX5 knockout cells. Wild-type and DDX5 knockout samples were subjected to SDS-PAGE.

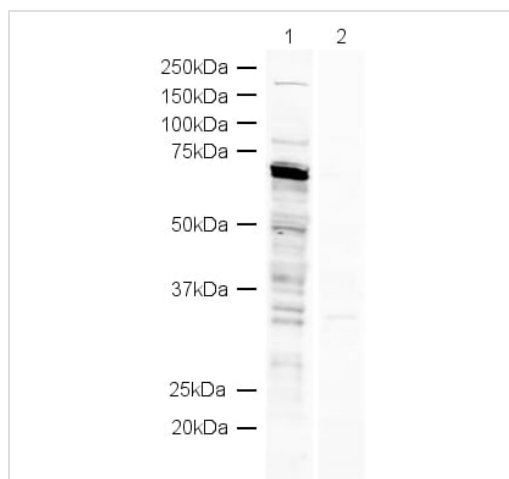
Ab21696 and **ab9484** (Mouse anti-GAPDH loading control) were incubated overnight at 4°C at 1 µg/ml and 1/20000 dilution respectively. Blots were developed with Goat anti-Rabbit IgG H&L (IRDye® 800CW) preabsorbed **ab216773** and Goat anti-Mouse IgG H&L (IRDye® 680RD) preabsorbed **ab216776** secondary antibodies at 1/20000 dilution for 1 hour at room temperature before imaging.



ab21696 staining DDX5 in HeLa cells. The cells were fixed with 100% methanol (5 min), permeabilized with 0.1% PBS-Triton X-100 for 5 minutes and then blocked with 1% BSA/10% normal goat serum/0.3M glycine in 0.1% PBS-Tween for 1h. The cells were then incubated overnight at 4°C with ab21696 at 1 µg/ml and **ab7291**, Mouse monoclonal [DM1A] to alpha Tubulin - Loading Control. Cells were then incubated with **ab150081**, Goat polyclonal Secondary Antibody to Rabbit IgG - H&L (Alexa Fluor® 488), pre-adsorbed at 1/1000 dilution (shown in green) and **ab150120**, Goat polyclonal Secondary Antibody to Mouse IgG - H&L (Alexa Fluor® 594), pre-adsorbed at 1/1000 dilution (shown in pseudocolour red). Nuclear DNA was labelled with DAPI (shown in blue).

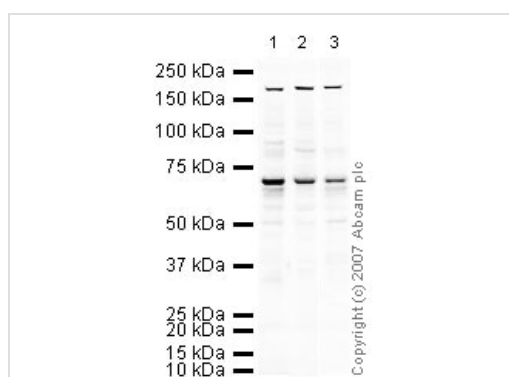
Also suitable in cells fixed with 4% paraformaldehyde (10 min).

Image was acquired with a high-content analyser (Operetta CLS, Perkin Elmer) and a maximum intensity projection of confocal sections is shown.



Western blot - Anti-DDX5 antibody (ab21696)

ab21696 recognizes a clear, strong band at ~ 69kDa corresponding to DDX5. A number of other, non specific bands are weakly recognized by the antibody. All bands are quenched by the addition of the blocking peptide.



Western blot - Anti-DDX5 antibody (ab21696)

**All lanes :** Anti-DDX5 antibody (ab21696) at 1 µg/ml

**Lane 1 :** MEF1 (Mouse embryonic fibroblast cell line) Whole Cell Lysate

**Lane 2 :** Testis (Mouse) Tissue Lysate - normal tissue

**Lane 3 :** PC12 (Rat adrenal pheochromocytoma cell line) Whole Cell Lysate

Lysates/proteins at 10 µg per lane.

### Secondary

**All lanes :** IRDye 680 Conjugated Goat Anti-Rabbit IgG (H+L) at 1/10000 dilution

Performed under reducing conditions.

**Predicted band size:** 69 kDa

**Observed band size:** 70 kDa

**Additional bands at:** 170 kDa. We are unsure as to the identity of these extra bands.

**Please note:** All products are "FOR RESEARCH USE ONLY. NOT FOR USE IN DIAGNOSTIC PROCEDURES"

### **Our Abpromise to you: Quality guaranteed and expert technical support**

---

- Replacement or refund for products not performing as stated on the datasheet
- Valid for 12 months from date of delivery
- Response to your inquiry within 24 hours
  
- We provide support in Chinese, English, French, German, Japanese and Spanish
- Extensive multi-media technical resources to help you
- We investigate all quality concerns to ensure our products perform to the highest standards

If the product does not perform as described on this datasheet, we will offer a refund or replacement. For full details of the Abpromise, please visit <https://www.abcam.co.jp/abpromise> or contact our technical team.

### **Terms and conditions**

---

- Guarantee only valid for products bought direct from Abcam or one of our authorized distributors