


Anti-DDX3 antibody ab95979

面格新

医薬用外劇物

製品の概要

製品名	Anti-DDX3 antibody
製品の詳細	Rabbit polyclonal to DDX3
由来種	Rabbit
特異性	The immunogen sequence is derived from DDX3Y, the DDX3X homologous sequence is 95% identical so should also be detected by this antibody.
アプリケーション	適用あり: WB, ICC/IF
種交差性	交差種: Human 交差が予測される動物種: Mouse, Rat, Cow 
免疫原	Recombinant fragment, corresponding to a sequence within amino acids 70-316 of Human DDX3Y.
ポジティブ・コントロール	293T, A431, H1299, HeLa, HepG2, Molt4, and Raji cells and whole cell lysates.
特記事項	<p>The Life Science industry has been in the grips of a reproducibility crisis for a number of years. Abcam is leading the way in addressing this with our range of recombinant monoclonal antibodies and knockout edited cell lines for gold-standard validation. Please check that this product meets your needs before purchasing.</p> <p>If you have any questions, special requirements or concerns, please send us an inquiry and/or contact our Support team ahead of purchase. Recommended alternatives for this product can be found below, along with publications, customer reviews and Q&As</p>

製品の特性

製品の状態	Liquid
保存方法	Shipped at 4°C. Upon delivery aliquot and store at -20°C or -80°C. Avoid repeated freeze / thaw cycles.
バッファー	pH: 7.00 Preservative: 0.01% Thimerosal (merthiolate) Constituents: 1.21% Tris, 0.75% Glycine, 10% Glycerol (glycerin, glycerine)
精製度	Immunogen affinity purified
ポリ/モノ	ポリクローナル
アイソタイプ	IgG

アプリケーション

The Abpromise guarantee

Abpromise保証は、次のテスト済みアプリケーションにおけるab95979の使用に適用されます

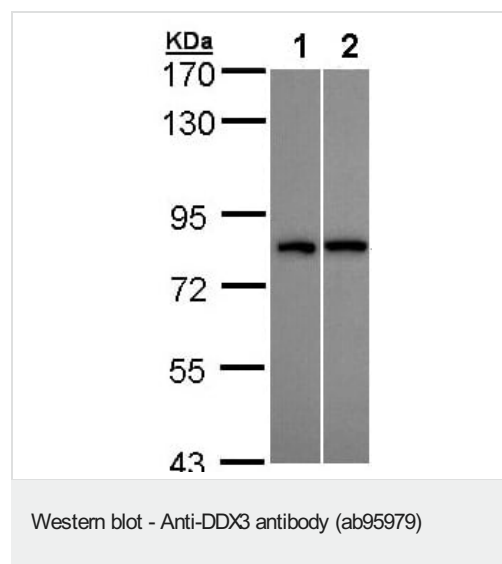
アプリケーションノートには、推奨の開始希釈率がありますが、適切な希釈率につきましてはご確認ください。

アプリケーション	Abreviews	特記事項
WB		1/500 - 1/3000. Predicted molecular weight: 73 kDa.
ICC/IF		1/100 - 1/200.

ターゲット情報

機能	ATP-dependent RNA helicase. Acts as a cofactor for XPO1-mediated nuclear export of incompletely spliced HIV-1 Rev RNAs. Also involved in HIV-1 replication. Interacts specifically with hepatitis C virus core protein resulting in a change in intracellular location.
配列類似性	Belongs to the DEAD box helicase family. DDX3/DED1 subfamily. Contains 1 helicase ATP-binding domain. Contains 1 helicase C-terminal domain.
細胞内局在	Nucleus speckle. Cytoplasm. Located predominantly in nuclear speckles and, at low levels, throughout the cytoplasm. Located to the outer side of nuclear pore complexes (NPC). Shuttles between the nucleus and the cytoplasm in a XPO1-dependent manner.

画像



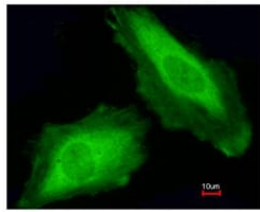
All lanes : Anti-DDX3 antibody (ab95979) at 1/10000 dilution

Lane 1 : H1299 whole cell lysate

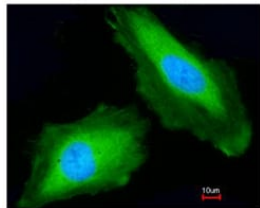
Lane 2 : HepG2 whole cell lysate

Lysates/proteins at 30 µg per lane.

Predicted band size: 73 kDa



Merged with DNA probe



ab95979 at 1/200 dilution staining DDX3 in HeLa cells by Immunofluorescence, Paraformaldehyde-fixed. Lower image is merged with DNA probe.

Immunocytochemistry/ Immunofluorescence - Anti-DDX3 antibody (ab95979)

Please note: All products are "FOR RESEARCH USE ONLY. NOT FOR USE IN DIAGNOSTIC PROCEDURES"

Our Abpromise to you: Quality guaranteed and expert technical support

- Replacement or refund for products not performing as stated on the datasheet
- Valid for 12 months from date of delivery
- Response to your inquiry within 24 hours
- We provide support in Chinese, English, French, German, Japanese and Spanish
- Extensive multi-media technical resources to help you
- We investigate all quality concerns to ensure our products perform to the highest standards

If the product does not perform as described on this datasheet, we will offer a refund or replacement. For full details of the Abpromise, please visit <https://www.abcam.co.jp/abpromise> or contact our technical team.

Terms and conditions

- Guarantee only valid for products bought direct from Abcam or one of our authorized distributors