

Anti-DDAH2 antibody [EPR15508(B)] ab184166

リコンビナント **RabMAb**

★★★★★ **1 Abreviews** **6 References** 画像数 **2**

製品の概要

製品名	Anti-DDAH2 antibody [EPR15508(B)]
製品の詳細	Rabbit monoclonal [EPR15508(B)] to DDAH2
由来種	Rabbit
アプリケーション	適用あり: WB 適用なし: IP
種交差性	交差種: Mouse, Rat, Human
免疫原	Synthetic peptide. This information is proprietary to Abcam and/or its suppliers.
特記事項	<p>This product is a recombinant monoclonal antibody, which offers several advantages including:</p> <ul style="list-style-type: none"> - High batch-to-batch consistency and reproducibility - Improved sensitivity and specificity - Long-term security of supply - Animal-free production <p>For more information see here.</p> <p>Our RabMAb[®] technology is a patented hybridoma-based technology for making rabbit monoclonal antibodies. For details on our patents, please refer to RabMAb[®] patents.</p>

製品の特性

製品の状態	Liquid
保存方法	Shipped at 4°C. Store at +4°C short term (1-2 weeks). Upon delivery aliquot. Store at -20°C long term. Avoid freeze / thaw cycle.
バッファー	pH: 7.2 Preservative: 0.01% Sodium azide Constituents: 59% PBS, 40% Glycerol (glycerin, glycerine), 0.05% BSA
精製度	Protein A purified
ポリ/モノ	モノクローナル
クローン名	EPR15508(B)
アイソタイプ	IgG

アプリケーション

The Abpromise guarantee **Abpromise保証は、** 次のテスト済みアプリケーションにおけるab184166の使用に適用されます
アプリケーションノートには、推奨の開始希釈率がありますが、適切な希釈率につきましてはご検討ください。

アプリケーション	Abreviews	特記事項
WB	★★★★★ (1)	1/1000 - 1/10000. Detects a band of approximately 30 kDa (predicted molecular weight: 30 kDa).

追加情報 Is unsuitable for IP.

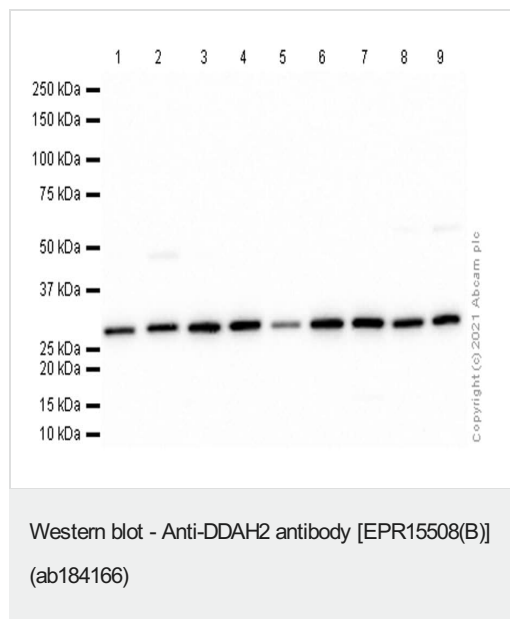
ターゲット情報

機能 Hydrolyzes N(G),N(G)-dimethyl-L-arginine (ADMA) and N(G)-monomethyl-L-arginine (MMA) which act as inhibitors of NOS. Has therefore a role in the regulation of nitric oxide generation.

組織特異性 Detected in heart, placenta, lung, liver, skeletal muscle, kidney and pancreas, and at very low levels in brain.

配列類似性 Belongs to the DDAH family.

画像



Lanes 1-7 : Anti-DDAH2 antibody [EPR15508(B)] (ab184166) at 1/1000 dilution (Purified)

Lanes 8-9 : Anti-DDAH2 antibody [EPR15508(B)] (ab184166) at 1/1000 dilution

Lane 1 : MCF7 (Human breast adenocarcinoma epithelial cell) whole cell lysate

Lane 2 : SW620 (Human colorectal adenocarcinoma epithelial cell) whole cell lysate

Lane 3 : NIH/3T3 (Mouse embryonic fibroblast) whole cell lysate

Lane 4 : PC-12 (Rat adrenal gland pheochromocytoma) whole cell lysate

Lane 5 : C6 (Rat glial tumor glial cell) whole cell lysate

Lane 6 : Mouse brain lysate

Lane 7 : Rat brain lysate

Lane 8 : Mouse heart lysate

Lane 9 : Rat heart lysate





Lysates/proteins at 20 µg per lane.

Secondary

All lanes : Goat Anti-Rabbit IgG H&L (HRP) (**ab97051**) at 1/100000 dilution

Predicted band size: 30 kDa

Why choose a recombinant antibody?

 <p>Research with confidence Consistent and reproducible results</p>	 <p>Long-term and scalable supply Recombinant technology</p>
 <p>Success from the first experiment Confirmed specificity</p>	 <p>Ethical standards compliant Animal-free production</p>

Anti-DDAH2 antibody [EPR15508(B)] (ab184166)

Please note: All products are "FOR RESEARCH USE ONLY. NOT FOR USE IN DIAGNOSTIC PROCEDURES"

Our Abpromise to you: Quality guaranteed and expert technical support

- Replacement or refund for products not performing as stated on the datasheet
- Valid for 12 months from date of delivery
- Response to your inquiry within 24 hours
- We provide support in Chinese, English, French, German, Japanese and Spanish
- Extensive multi-media technical resources to help you
- We investigate all quality concerns to ensure our products perform to the highest standards

If the product does not perform as described on this datasheet, we will offer a refund or replacement. For full details of the Abpromise, please visit <https://www.abcam.co.jp/abpromise> or contact our technical team.

Terms and conditions

- Guarantee only valid for products bought direct from Abcam or one of our authorized distributors