


### Anti-DDAH1 antibody [EPR13922] ab180599

KO 評価済 リコンビナント RabMAb

★★★★☆ 1 Abreviews 7 References 画像数 7

#### 製品の概要

製品名	Anti-DDAH1 antibody [EPR13922]
製品の詳細	Rabbit monoclonal [EPR13922] to DDAH1
由来種	Rabbit
アプリケーション	適用あり: Flow Cyt (Intra), WB, IHC-P, ICC/IF, IP
種交差性	交差種: Human 交差が予測される動物種: Mouse, Rat, Cow 
免疫原	Synthetic peptide. This information is proprietary to Abcam and/or its suppliers.
ポジティブ・コントロール	WB: HuVEC, A431 and HepG2 Human fetal brain, liver, kidney or 293 lysate, Human ovarian carcinoma tissue, 293 cells.
特記事項	This product is a recombinant monoclonal antibody, which offers several advantages including: <ul style="list-style-type: none"><li>- High batch-to-batch consistency and reproducibility</li><li>- Improved sensitivity and specificity</li><li>- Long-term security of supply</li><li>- Animal-free production</li></ul> For more information <a href="#">see here</a> . Our RabMAb <sup>®</sup> technology is a patented hybridoma-based technology for making rabbit monoclonal antibodies. For details on our patents, please refer to <a href="#">RabMAb<sup>®</sup> patents</a> .

#### 製品の特性

製品の状態	Liquid
保存方法	Shipped at 4°C. Store at +4°C short term (1-2 weeks). Upon delivery aliquot. Store at -20°C long term. Avoid freeze / thaw cycle.
バッファー	pH: 7.20 Preservative: 0.01% Sodium azide Constituents: 9% PBS, 40% Glycerol (glycerin, glycerine), 0.05% BSA, 50% Tissue culture supernatant
精製度	Protein A purified
ポリ/モノ	モノクローナル

クローン名                   EPR13922  
アイソタイプ                 IgG

#### アプリケーション

**The Abpromise guarantee**       **Abpromise保証は、** 次のテスト済みアプリケーションにおけるab180599の使用に適用されます  
アプリケーションノートには、推奨の開始希釈率がありますが、適切な希釈率につきましてはご検討ください。

アプリケーション	Abreviews	特記事項
Flow Cyt (Intra)		1/20.
WB		1/10000 - 1/50000. Detects a band of approximately 37 kDa.
IHC-P	★★★★★ (1)	1/50. Perform heat mediated antigen retrieval with Tris/EDTA buffer pH 9.0 before commencing with IHC staining protocol. For antigen retrieval heat up to 98 °C, below boiling, and then let cool for 10-20 min.
ICC/IF		1/100.
IP		1/40.

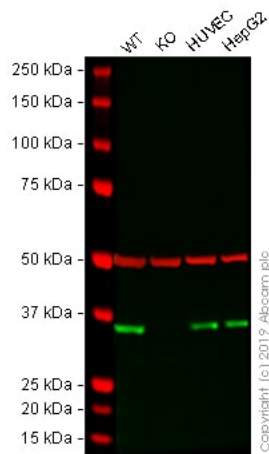
#### ターゲット情報

**機能**                               Hydrolyzes N(G),N(G)-dimethyl-L-arginine (ADMA) and N(G)-monomethyl-L-arginine (MMA) which act as inhibitors of NOS. Has therefore a role in the regulation of nitric oxide generation.

**組織特異性**                     Detected in brain, liver, kidney and pancreas, and at low levels in skeletal muscle.

**配列類似性**                     Belongs to the DDAH family.

#### 画像



Western blot - Anti-DDAH1 antibody [EPR13922] (ab180599)

**All lanes** : Anti-DDAH1 antibody [EPR13922] (ab180599) at 1/10000 dilution

**Lane 1** : Wild-type A431 cell lysate

**Lane 2** : DDAH1 knockout A431 cell lysate

**Lane 3** : HUVEC (Human umbilical vein endothelial cell line) whole cell lysate

**Lane 4** : HepG2 (Human liver hepatocellular carcinoma cell line) whole cell lysate

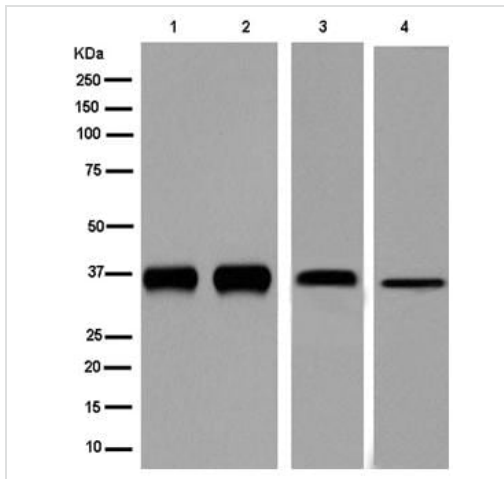
Lysates/proteins at 40 µg per lane.

Performed under reducing conditions.

**Observed band size:** 37 kDa

**Lanes 1 - 4:** Merged signal (red and green). Green - ab180599 observed at 37 kDa. Red - loading control, **ab7291** (Mouse anti-Alpha Tubulin [DM1A]) observed at 55kDa.

ab180599 was shown to react with DDAH1 in A431 wild-type cells in Western blot. Loss of signal was observed when DDAH1 knockout sample was used. A431 wild-type and DDAH1 knockout cell lysates were subjected to SDS-PAGE. Membranes were blocked in 3% Milk in TBS-T (0.1% Tween®) before incubation with ab180599 and **ab7291** (Mouse anti-Alpha Tubulin [DM1A]) overnight at 4°C at a 1 in 10000 dilution and a 1 in 20000 dilution respectively. Blots were developed with Goat anti-Rabbit IgG H&L (IRDye® 800CW) preabsorbed (**ab216773**) and Goat anti-Mouse IgG H&L (IRDye® 680RD) preabsorbed (**ab216776**) secondary antibodies at 1 in 20000 dilution for 1 hour at room temperature before imaging.



Western blot - Anti-DDAH1 antibody [EPR13922] (ab180599)

**All lanes :** Anti-DDAH1 antibody [EPR13922] (ab180599) at 1/20000 dilution

**Lane 1 :** Human fetal brain lysate at 20 µg

**Lane 2 :** Human fetal liver lysate at 20 µg

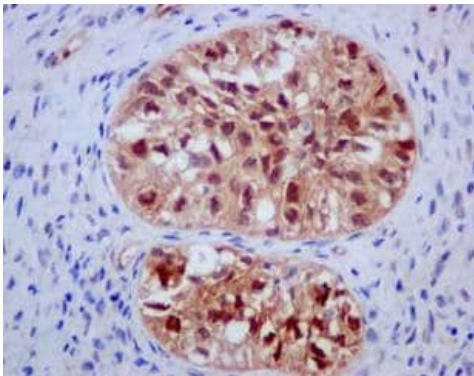
**Lane 3 :** Human fetal kidney lysate at 20 µg

**Lane 4 :** 293 lysate at 10 µg

#### Secondary

**All lanes :** Goat Anti-Rabbit IgG (H+L) Peroxidase conjugated at 1/1000 dilution

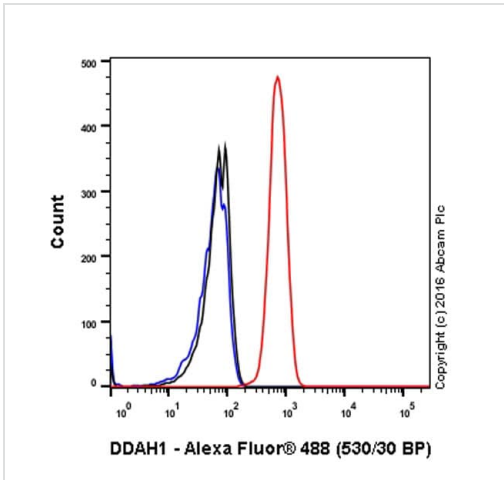
**Observed band size:** 37 kDa



Immunohistochemistry (Formalin/PFA-fixed paraffin-embedded sections) - Anti-DDAH1 antibody [EPR13922] (ab180599)

Immunohistochemical analysis of paraffin embedded Human ovarian carcinoma tissue labeling DDAH1 with ab180599 at a 1/50 dilution. Prediluted HRP Polymer for Rabbit IgG secondary used. Counterstained with Hematoxylin.

Perform heat mediated antigen retrieval with EDTA buffer pH 9 before commencing with IHC staining protocol.

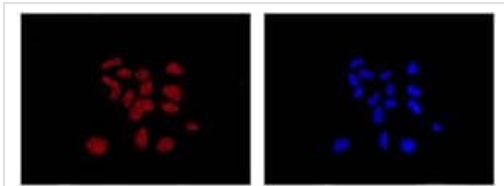


Flow Cytometry (Intracellular) - Anti-DDAH1 antibody [EPR13922] (ab180599)

ab180599 staining DDAH1 in the human cell line 293 (human embryonic kidney) by intracellular flow cytometry. Cells were fixed with 4% paraformaldehyde, permeabilised with 90% methanol and the sample was incubated with the primary antibody at a dilution of 1/20. A goat anti rabbit IgG (Alexa Fluor® 488) at a dilution of 1/2000 was used as the secondary antibody.

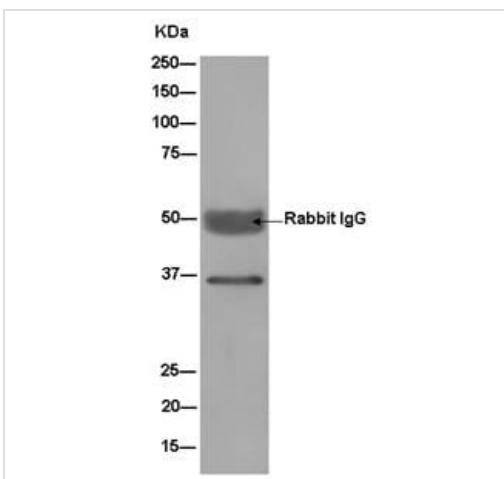
Isootype control: Rabbit monoclonal IgG (Black)

Unlabelled control: Cell without incubation with primary antibody and secondary antibody (Blue)



Immunocytochemistry/ Immunofluorescence - Anti-DDAH1 antibody [EPR13922] (ab180599)

Immunofluorescence analysis of 293 cells (fixative 4% paraformaldehyde) labeling DDAH1 with ab180599 at a 1/100 dilution (left image), and counterstained with Dapi (right image). Goat anti rabbit IgG (Dylight 555) secondary used at a 1/200 dilution.



Immunoprecipitation - Anti-DDAH1 antibody [EPR13922] (ab180599)

Immunoprecipitation analysis of Human fetal kidney lysate labeling DDAH1 with ab180599 at a 1/40 dilution. Goat Anti-Rabbit IgG (H+L) Peroxidase conjugated secondary used at a 1/1000 dilution.

### Why choose a recombinant antibody?



**Research with confidence**  
Consistent and reproducible results



**Long-term and scalable supply**  
Recombinant technology



**Success from the first experiment**  
Confirmed specificity



**Ethical standards compliant**  
Animal-free production

Anti-DDAH1 antibody [EPR13922] (ab180599)

**Please note:** All products are "FOR RESEARCH USE ONLY. NOT FOR USE IN DIAGNOSTIC PROCEDURES"

### Our Abpromise to you: Quality guaranteed and expert technical support

---

- Replacement or refund for products not performing as stated on the datasheet
- Valid for 12 months from date of delivery
- Response to your inquiry within 24 hours
- We provide support in Chinese, English, French, German, Japanese and Spanish
- Extensive multi-media technical resources to help you
- We investigate all quality concerns to ensure our products perform to the highest standards

If the product does not perform as described on this datasheet, we will offer a refund or replacement. For full details of the Abpromise, please visit <https://www.abcam.co.jp/abpromise> or contact our technical team.

### Terms and conditions

---

- Guarantee only valid for products bought direct from Abcam or one of our authorized distributors