




Anti-DDAH1 antibody ab2231

★★★★★ [3 Abreviews](#) [17 References](#) [画像数 5](#)

製品の概要

製品名	Anti-DDAH1 antibody
製品の詳細	Goat polyclonal to DDAH1
由来種	Goat
アプリケーション	適用あり: ICC, Flow Cyt, WB
種交差性	交差種: Human 交差が予測される動物種: Cow 
免疫原	Synthetic peptide corresponding to Human DDAH1 aa 273-285 (C terminal). Sequence: TCCSVLINKKVDS Database link: O94760 (Peptide available as ab99047) <div>  Run BLAST with  Run BLAST with </div>
ポジティブ・コントロール	WB: HepG2 and LnCaP cell lysates. Human cerebellum, kidney and testes. ICC: HeLa and U20S cells Flow cyt: HeLa cells.
特記事項	<p>The Life Science industry has been in the grips of a reproducibility crisis for a number of years. Abcam is leading the way in addressing this with our range of recombinant monoclonal antibodies and knockout edited cell lines for gold-standard validation. Please check that this product meets your needs before purchasing.</p> <p>If you have any questions, special requirements or concerns, please send us an inquiry and/or contact our Support team ahead of purchase. Recommended alternatives for this product can be found below, along with publications, customer reviews and Q&As</p>

製品の特性

製品の状態	Liquid
保存方法	Shipped at 4°C. Upon delivery aliquot and store at -20°C or -80°C. Avoid repeated freeze / thaw cycles.
バッファー	pH: 7.30 Preservative: 0.02% Sodium azide Constituents: Tris buffered saline, 0.5% BSA

精製度	Immunogen affinity purified
特記事項 (精製)	Purified from goat serum by ammonium sulphate precipitation followed by antigen affinity chromatography using the immunizing peptide.
ポリ/モノ	ポリクローナル
アイソタイプ	IgG

アプリケーション

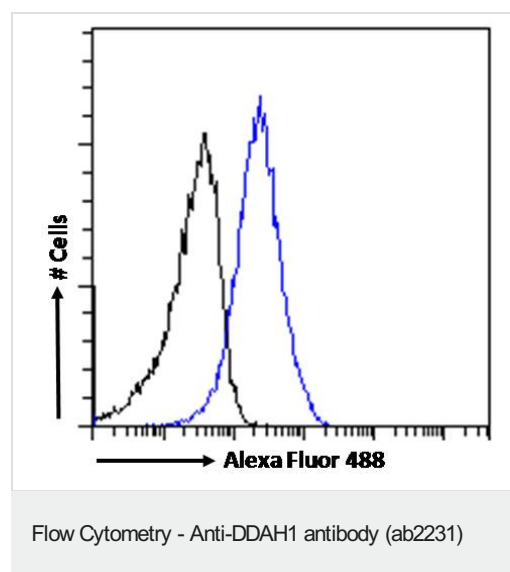
The Abpromise guarantee Abpromise保証は、 次のテスト済みアプリケーションにおけるab2231の使用に適用されます
アプリケーションノートには、推奨の開始希釈率がありますが、適切な希釈率につきましてはご検討ください。

アプリケーション	Abreviews	特記事項
ICC		Use a concentration of 10 µg/ml.
Flow Cyt		Use a concentration of 10 µg/ml.
WB	★★★★★ (3)	Use a concentration of 0.1 - 0.3 µg/ml. Detects a band of approximately 35 kDa (predicted molecular weight: 31 kDa). 1 hour primary incubation is recommended for this product.

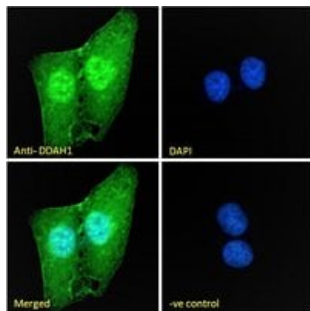
ターゲット情報

機能	Hydrolyzes N(G),N(G)-dimethyl-L-arginine (ADMA) and N(G)-monomethyl-L-arginine (MMA) which act as inhibitors of NOS. Has therefore a role in the regulation of nitric oxide generation.
組織特異性	Detected in brain, liver, kidney and pancreas, and at low levels in skeletal muscle.
配列類似性	Belongs to the DDAH family.

画像

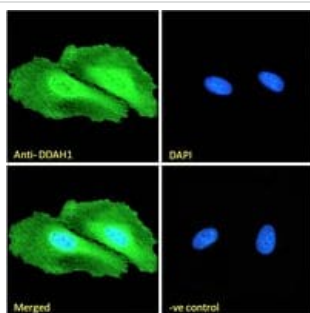


Flow cytometric analysis of paraformaldehyde fixed HeLa cells (blue line), permeabilized with 0.5% Triton using ab2231 at 10ug/ml followed by Alexa Fluor 488 secondary antibody at 1ug/ml. IgG control: Unimmunized goat IgG (black line) followed by Alexa Fluor 488 secondary antibody.



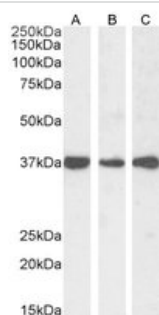
Immunocytochemistry - Anti-DDAH1 antibody (ab2231)

Immunofluorescence analysis of paraformaldehyde fixed U2OS cells, permeabilized with 0.15% Triton using ab2231 at 10ug/ml followed by Alexa Fluor 488 secondary antibody at 2ug/ml, showing nuclear and cytoplasmic staining. The nuclear stain is DAPI (blue). Negative control: Unimmunized goat IgG followed by Alexa Fluor 488 secondary antibody.



Immunocytochemistry - Anti-DDAH1 antibody (ab2231)

Immunofluorescence analysis of paraformaldehyde fixed HeLa cells, permeabilized with 0.15% Triton using ab2231 at 10ug/ml followed by Alexa Fluor 488 secondary antibody at 2ug/ml, showing nuclear and cytoplasmic staining. The nuclear stain is DAPI (blue). Negative control: Unimmunized goat IgG followed by Alexa Fluor 488 secondary antibody.



Western blot - Anti-DDAH1 antibody (ab2231)

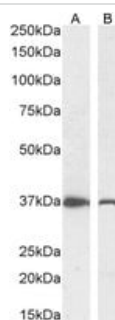
All lanes : Anti-DDAH1 antibody (ab2231) at 0.3 µg/ml

Lane 1 : Human cerebellum

Lane 2 : Human kidney

Lane 3 : Human testes

Predicted band size: 31 kDa



Western blot - Anti-DDAH1 antibody (ab2231)

All lanes : Anti-DDAH1 antibody (ab2231) at 0.3 µg/ml

Lane 1 : HepG2 cell lysate

Lane 2 : LnCaP cell lysate

Predicted band size: 31 kDa

Please note: All products are "FOR RESEARCH USE ONLY. NOT FOR USE IN DIAGNOSTIC PROCEDURES"

Our Abpromise to you: Quality guaranteed and expert technical support

- Replacement or refund for products not performing as stated on the datasheet
- Valid for 12 months from date of delivery
- Response to your inquiry within 24 hours

- We provide support in Chinese, English, French, German, Japanese and Spanish
- Extensive multi-media technical resources to help you
- We investigate all quality concerns to ensure our products perform to the highest standards

If the product does not perform as described on this datasheet, we will offer a refund or replacement. For full details of the Abpromise, please visit <https://www.abcam.co.jp/abpromise> or contact our technical team.

Terms and conditions

- Guarantee only valid for products bought direct from Abcam or one of our authorized distributors