

Anti-dbx2 antibody [EPR12633(B)] ab177470

リコンビナント RabMAb[®]

画像数 2

製品の概要

| | |
|--------------|--|
| 製品名 | Anti-dbx2 antibody [EPR12633(B)] |
| 製品の詳細 | Rabbit monoclonal [EPR12633(B)] to dbx2 |
| 由来種 | Rabbit |
| アプリケーション | 適用あり: WB 適用なし: Flow Cyt, ICC/IF, IHC-P or IP |
| 種交差性 | 交差種: Human 交差が予測される動物種: Mouse, Rat  |
| 免疫原 | Synthetic peptide. This information is proprietary to Abcam and/or its suppliers. |
| ポジティブ・コントロール | HepG2, 293T, HT-1080 and fetal kidney lysates. |
| 特記事項 | This product is a recombinant monoclonal antibody, which offers several advantages including: - High batch-to-batch consistency and reproducibility - Improved sensitivity and specificity - Long-term security of supply - Animal-free production For more information see here . Our RabMAb [®] technology is a patented hybridoma-based technology for making rabbit monoclonal antibodies. For details on our patents, please refer to RabMAb[®] patents . |

製品の特性

| | |
|-------|---|
| 製品の状態 | Liquid |
| 保存方法 | Shipped at 4°C. Store at +4°C short term (1-2 weeks). Upon delivery aliquot. Store at -20°C long term. Avoid freeze / thaw cycle. |
| バッファー | pH: 7.20 Constituents: 0.35% Sodium citrate, 0.17% Sodium chloride, 0.03% EDTA, 59% PBS, 40% Glycerol (glycerin, glycerine), 0.05% BSA |
| 精製度 | Protein A purified |
| ポリ/モノ | モノクローナル |
| クローン名 | EPR12633(B) |

アイソタイプ

IgG

アプリケーション

The Abpromise guarantee **Abpromise保証は、次のテスト済みアプリケーションにおけるab177470の使用に適用されず**
アプリケーションノートには、推奨の開始希釈率がありますが、適切な希釈率につきましてはご検討ください。

| アプリケーション | Abreviews | 特記事項 |
|----------|-----------|--|
| WB | | 1/1000 - 1/5000. Predicted molecular weight: 36 kDa. |

追加情報

Is unsuitable for Flow Cyt, ICC/IF, IHC-P or IP.

ターゲット情報

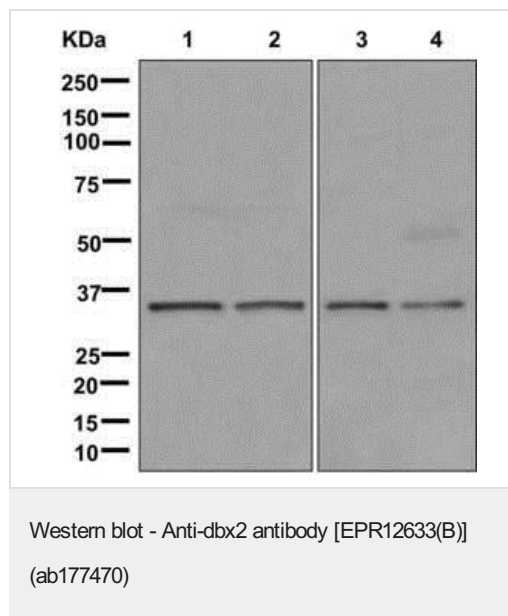
関連性

Members of the Dbx family are implicated in regionalization of the CNS. Dbx2 is restricted to the ventricular region of the embryonic CNS as well as some of the mesenchymal cells, such as limb buds and tooth germs. BMP regulation of the expression boundaries of the homeobox proteins Dbx2, Pax6 and Msx1 generates precursor populations with distinct developmental potentials.

細胞内局在

Nuclear

画像



All lanes : Anti-dbx2 antibody [EPR12633(B)] (ab177470) at 1/1000 dilution

Lane 1 : HepG2 lysate

Lane 2 : 293T lysate

Lane 3 : HT-1080 lysate

Lane 4 : Fetal kidney lysate

Lysates/proteins at 10 µg per lane.

Secondary

All lanes : Goat-anti-rabbit HRP at 1/2000 dilution

Developed using the ECL technique.

Predicted band size: 36 kDa

Why choose a recombinant antibody?



Research with confidence
Consistent and reproducible results



Long-term and scalable supply
Recombinant technology



Success from the first experiment
Confirmed specificity



Ethical standards compliant
Animal-free production

Anti-dbx2 antibody [EPR12633(B)] (ab177470)

Please note: All products are "FOR RESEARCH USE ONLY. NOT FOR USE IN DIAGNOSTIC PROCEDURES"

Our Abpromise to you: Quality guaranteed and expert technical support

- Replacement or refund for products not performing as stated on the datasheet
- Valid for 12 months from date of delivery
- Response to your inquiry within 24 hours
- We provide support in Chinese, English, French, German, Japanese and Spanish
- Extensive multi-media technical resources to help you
- We investigate all quality concerns to ensure our products perform to the highest standards

If the product does not perform as described on this datasheet, we will offer a refund or replacement. For full details of the Abpromise, please visit <https://www.abcam.co.jp/abpromise> or contact our technical team.

Terms and conditions

- Guarantee only valid for products bought direct from Abcam or one of our authorized distributors