


Anti-Cytosolic Phospholipase A2 antibody - N-terminal ab227246

画像数 6

製品の概要

製品名	Anti-Cytosolic Phospholipase A2 antibody - N-terminal
製品の詳細	Rabbit polyclonal to Cytosolic Phospholipase A2 - N-terminal
由来種	Rabbit
アプリケーション	適用あり: ICC/IF, IHC-P, WB
種交差性	交差種: Mouse, Human 交差が予測される動物種: Rat, Rabbit, Cow 
免疫原	Recombinant fragment within Human Cytosolic Phospholipase A2 (N terminal). The exact sequence is proprietary. Database link: P47712
ポジティブ・コントロール	IHC-P: Mouse duodenum and liver tissues; U87 xenograft tissue. WB: NIH/3T3 and Raji whole cell lysates. ICC/IF: HeLa cells.
特記事項	<p>The Life Science industry has been in the grips of a reproducibility crisis for a number of years. Abcam is leading the way in addressing this with our range of recombinant monoclonal antibodies and knockout edited cell lines for gold-standard validation. Please check that this product meets your needs before purchasing.</p> <p>If you have any questions, special requirements or concerns, please send us an inquiry and/or contact our Support team ahead of purchase. Recommended alternatives for this product can be found below, along with publications, customer reviews and Q&As</p>

製品の特性

製品の状態	Liquid
保存方法	Shipped at 4°C. Store at +4°C short term (1-2 weeks). Upon delivery aliquot. Store at -20°C long term. Avoid freeze / thaw cycle.
バッファー	pH: 7.00 Preservative: 0.025% Proclin 300 Constituents: 79% PBS, 20% Glycerol (glycerin, glycerine)
精製度	Immunogen affinity purified
ポリ/モノ	ポリクローナル
アイソタイプ	IgG

アプリケーション

The Abpromise guarantee

Abpromise保証は、次のテスト済みアプリケーションにおけるab227246の使用に適用されます

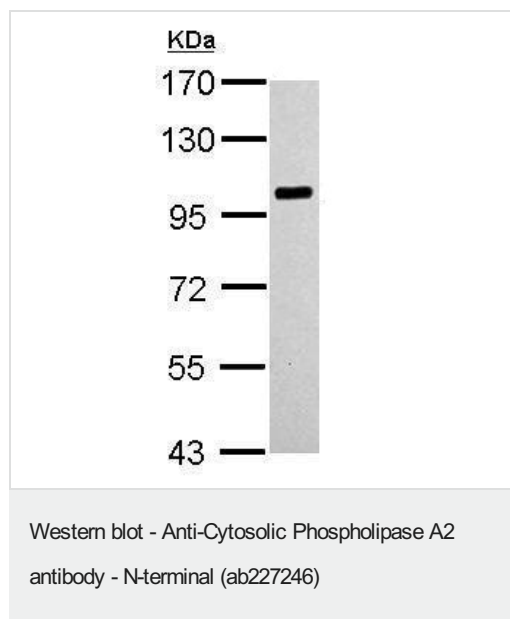
アプリケーションノートには、推奨の開始希釈率がありますが、適切な希釈率につきましてはご検討ください。

アプリケーション	Abreviews	特記事項
ICC/IF		1/100 - 1/1000.
IHC-P		1/100 - 1/1000.
WB		1/500 - 1/3000. Predicted molecular weight: 85 kDa.

ターゲット情報

機能	Selectively hydrolyzes arachidonyl phospholipids in the sn-2 position releasing arachidonic acid. Together with its lysophospholipid activity, it is implicated in the initiation of the inflammatory response.
組織特異性	Expressed in various tissues such as macrophages, platelets, neutrophils, fibroblasts and lung endothelium.
配列類似性	Contains 1 C2 domain. Contains 1 PLA2c domain.
ドメイン	The N-terminal C2 domain associates with lipid membranes upon calcium binding. It modulates enzyme activity by presenting the active site to its substrate in response to elevations of cytosolic Ca(2+).
翻訳後修飾	Activated by phosphorylation at both Ser-505 and Ser-727.
細胞内局在	Cytoplasm. Cytoplasmic vesicle. Translocates to membrane vesicles in a calcium-dependent fashion.

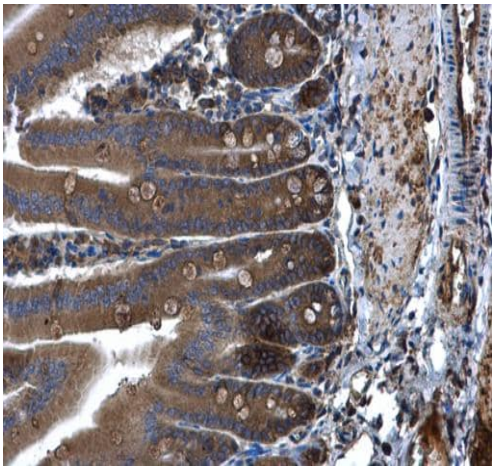
画像



Anti-Cytosolic Phospholipase A2 antibody - N-terminal (ab227246)
at 1/1000 dilution + NIH/3T3 (mouse embryo fibroblast cell line)
whole cell lysate at 30 µg

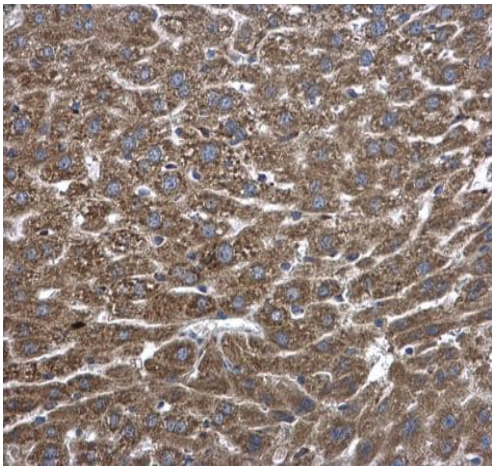
Predicted band size: 85 kDa

7.5% SDS-PAGE gel.



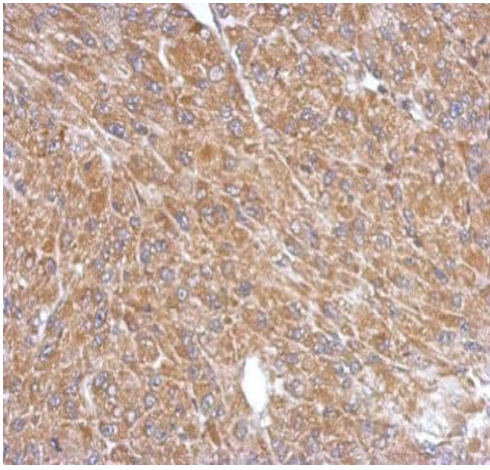
Immunohistochemistry (Formalin/PFA-fixed paraffin-embedded sections) - Anti-Cytosolic Phospholipase A2 antibody - N-terminal (ab227246)

Paraffin-embedded mouse duodenum tissue stained for Cytosolic Phospholipase A2 using ab227246 at 1/500 dilution in immunohistochemical analysis.



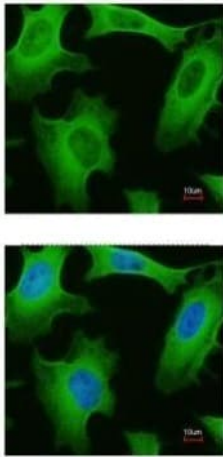
Immunohistochemistry (Formalin/PFA-fixed paraffin-embedded sections) - Anti-Cytosolic Phospholipase A2 antibody - N-terminal (ab227246)

Paraffin-embedded mouse liver tissue stained for Cytosolic Phospholipase A2 using ab227246 at 1/500 dilution in immunohistochemical analysis.



Immunohistochemistry (Formalin/PFA-fixed paraffin-embedded sections) - Anti-Cytosolic Phospholipase A2 antibody - N-terminal (ab227246)

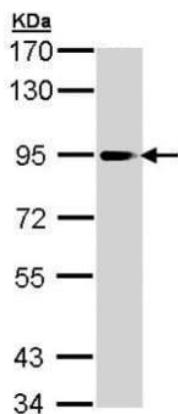
Paraffin-embedded U87 xenograft tissue stained for Cytosolic Phospholipase A2 using ab227246 at 1/500 dilution in immunohistochemical analysis.



Immunocytochemistry/ Immunofluorescence - Anti-Cytosolic Phospholipase A2 antibody - N-terminal (ab227246)

Paraformaldehyde-fixed HeLa (human epithelial cell line from cervix adenocarcinoma) cells stained for Cytosolic Phospholipase A2 (green) using ab227246 at 1/200 dilution in ICC/IF.

Lower panel: Merged with DNA probe.



Anti-Cytosolic Phospholipase A2 antibody - N-terminal (ab227246)
at 1/1000 dilution + Raji (human Burkitt's lymphoma cell line) whole
cell lysate at 30 µg

Predicted band size: 85 kDa

7.5% SDS-PAGE gel.

Western blot - Anti-Cytosolic Phospholipase A2
antibody - N-terminal (ab227246)

Please note: All products are "FOR RESEARCH USE ONLY. NOT FOR USE IN DIAGNOSTIC PROCEDURES"

Our Abpromise to you: Quality guaranteed and expert technical support

- Replacement or refund for products not performing as stated on the datasheet
- Valid for 12 months from date of delivery
- Response to your inquiry within 24 hours
- We provide support in Chinese, English, French, German, Japanese and Spanish
- Extensive multi-media technical resources to help you
- We investigate all quality concerns to ensure our products perform to the highest standards

If the product does not perform as described on this datasheet, we will offer a refund or replacement. For full details of the Abpromise, please visit <https://www.abcam.co.jp/abpromise> or contact our technical team.

Terms and conditions

- Guarantee only valid for products bought direct from Abcam or one of our authorized distributors