

Anti-Cytokeratin 8 antibody [35bH11] ab758

1 References [画像数 1](#)

製品の概要

製品名	Anti-Cytokeratin 8 antibody [35bH11]
製品の詳細	Mouse monoclonal [35bH11] to Cytokeratin 8
由来種	Mouse
アプリケーション	適用あり: IHC-P
種交差性	交差種: Human
免疫原	Tissue, cells or virus corresponding to Cytokeratin 8. Cytoskeletal extract of human hepatocellular carcinoma cell line, Hep3B
特記事項	<p>The Life Science industry has been in the grips of a reproducibility crisis for a number of years. Abcam is leading the way in addressing this with our range of recombinant monoclonal antibodies and knockout edited cell lines for gold-standard validation. Please check that this product meets your needs before purchasing.</p> <p>If you have any questions, special requirements or concerns, please send us an inquiry and/or contact our Support team ahead of purchase. Recommended alternatives for this product can be found below, along with publications, customer reviews and Q&As</p>

製品の特性

製品の状態	Liquid
保存方法	Shipped at 4°C. Store at +4°C short term (1-2 weeks). Store at -20°C or -80°C. Avoid freeze / thaw cycle.
バッファー	<p>pH: 7.3</p> <p>Preservative: 0.05% Sodium azide</p> <p>Constituents: Tissue culture supernatant, 1% BSA</p>
精製度	Tissue culture supernatant
ポリ/モノ	モノクローナル
クローン名	35bH11
アイソタイプ	IgM
軽鎖の種類	unknown

アプリケーション

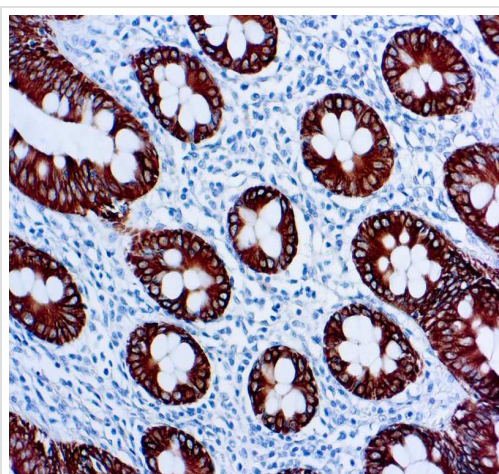
The Abpromise guarantee **Abpromise保証は、**次のテスト済みアプリケーションにおけるab758の使用に適用されます
 アプリケーションノートには、推奨の開始希釈率がありますが、適切な希釈率につきましてはご検討ください。

アプリケーション	Abreviews	特記事項
IHC-P		1/25 - 1/50.

ターゲット情報

機能	Together with KRT19, helps to link the contractile apparatus to dystrophin at the costameres of striated muscle.
組織特異性	Observed in muscle fibers accumulating in the costameres of myoplasm at the sarcolemma membrane in structures that contain dystrophin and spectrin. Expressed in gingival mucosa and hard palate of the oral cavity.
関連疾患	Cirrhosis
配列類似性	Belongs to the intermediate filament family.
翻訳後修飾	Phosphorylation on serine residues is enhanced during EGF stimulation and mitosis. Ser-74 phosphorylation plays an important role in keratin filament reorganization. O-glycosylated. O-GlcNAcylation at multiple sites increases solubility, and decreases stability by inducing proteasomal degradation. O-glycosylated (O-GlcNAcylation), in a cell cycle-dependent manner.
細胞内局在	Cytoplasm. Nucleus, nucleoplasm. Nucleus matrix.

画像



Formalin fixed paraffin embedded human colon tissue, staining Cytokeratin 8 with ab758 in immunohistochemical analysis.

Immunohistochemistry (Formalin/PFA-fixed paraffin-embedded sections) - Anti-Cytokeratin 8 antibody [35bH11] (ab758)

Please note: All products are "FOR RESEARCH USE ONLY. NOT FOR USE IN DIAGNOSTIC PROCEDURES"

Our Abpromise to you: Quality guaranteed and expert technical support

- Replacement or refund for products not performing as stated on the datasheet
- Valid for 12 months from date of delivery
- Response to your inquiry within 24 hours

- We provide support in Chinese, English, French, German, Japanese and Spanish
- Extensive multi-media technical resources to help you
- We investigate all quality concerns to ensure our products perform to the highest standards

If the product does not perform as described on this datasheet, we will offer a refund or replacement. For full details of the Abpromise, please visit <https://www.abcam.co.jp/abpromise> or contact our technical team.

Terms and conditions

- Guarantee only valid for products bought direct from Abcam or one of our authorized distributors