


Anti-Cytokeratin 5 + 6 + 18 antibody [LP34] ab270259

画像数 1

製品の概要

製品名	Anti-Cytokeratin 5 + 6 + 18 antibody [LP34]
製品の詳細	Mouse monoclonal [LP34] to Cytokeratin 5 + 6 + 18
由来種	Mouse
アプリケーション	適用あり: IHC-P
種交差性	交差種: Human 交差が予測される動物種: Rat, Cow 
免疫原	Tissue, cells or virus corresponding to Human Cytokeratin 5 + 6 + 18. Detergent-insoluble fraction of psoriatic human epidermis.
ポジティブ・コントロール	IHC-P: Human skin tissue.
特記事項	<p>The Life Science industry has been in the grips of a reproducibility crisis for a number of years. Abcam is leading the way in addressing this with our range of recombinant monoclonal antibodies and knockout edited cell lines for gold-standard validation. Please check that this product meets your needs before purchasing.</p> <p>If you have any questions, special requirements or concerns, please send us an inquiry and/or contact our Support team ahead of purchase. Recommended alternatives for this product can be found below, along with publications, customer reviews and Q&As</p>

製品の特性

製品の状態	Liquid
保存方法	Shipped at 4°C. Store at +4°C short term (1-2 weeks). Upon delivery aliquot. Store at -20°C. Avoid freeze / thaw cycle.
バッファー	pH: 7.2 Preservative: 0.05% Sodium azide Constituents: PBS, 0.05% BSA
精製度	Protein A/G purified
特記事項 (精製)	Purified from Bioreactor Concentrate.
ポリ/モノ	モノクローナル
クローン名	LP34
アイソタイプ	IgG1

アプリケーション

The Abpromise guarantee **Abpromise保証は、次のテスト済みアプリケーションにおけるab270259の使用に適用されず**
アプリケーションノートには、推奨の開始希釈率がありますが、適切な希釈率につきましてはご確認ください。

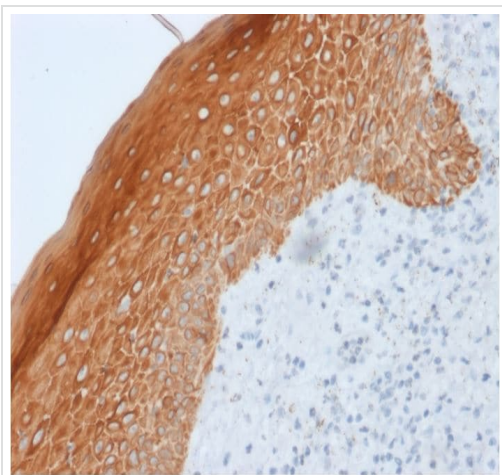
アプリケーション	Abreviews	特記事項
IHC-P		Use a concentration of 0.1 - 0.2 µg/ml. Perform heat mediated antigen retrieval with Tris/EDTA buffer pH 9.0 before commencing with IHC staining protocol.

ターゲット情報

関連性 Keratins 5, 6 are members of type II keratins family that are specifically expressed in the inner root sheath of hair follicles. The type II cytokeratins consist of basic or neutral proteins which are arranged in pairs of heterotypic keratin chains coexpressed during differentiation of simple and stratified epithelial tissues. Keratin 18 is member of the type I intermediate filament chain keratin 18. Keratin 18, together with its filament partner keratin 8, are perhaps the most commonly found members of the intermediate filament gene family.

細胞内局在 Cytoplasmic

画像



Formalin-fixed, paraffin-embedded human skin tissue stained for cytokeratin 5, 6 and 18 using ab270259 at 0.2 µg/ml in immunohistochemical analysis.

Immunohistochemistry (Formalin/PFA-fixed paraffin-embedded sections) - Anti-Cytokeratin 5 + 6 + 18 antibody [LP34] (ab270259)

Please note: All products are "FOR RESEARCH USE ONLY. NOT FOR USE IN DIAGNOSTIC PROCEDURES"

Our Abpromise to you: Quality guaranteed and expert technical support

- Replacement or refund for products not performing as stated on the datasheet
- Valid for 12 months from date of delivery
- Response to your inquiry within 24 hours

- We provide support in Chinese, English, French, German, Japanese and Spanish
- Extensive multi-media technical resources to help you
- We investigate all quality concerns to ensure our products perform to the highest standards

If the product does not perform as described on this datasheet, we will offer a refund or replacement. For full details of the Abpromise, please visit <https://www.abcam.co.jp/abpromise> or contact our technical team.

Terms and conditions

- Guarantee only valid for products bought direct from Abcam or one of our authorized distributors