

### Anti-Cytokeratin 20 antibody [Ks20.8] ab854

★★★★☆ [4 Abreviews](#) [4 References](#) [画像数 4](#)

#### 製品の概要

製品名	Anti-Cytokeratin 20 antibody [Ks20.8]
製品の詳細	Mouse monoclonal [Ks20.8] to Cytokeratin 20
由来種	Mouse
特異性	This antibody is highly specific to cytokeratin 20 and shows no cross-reaction with other intermediate filament proteins. It is essentially non-reactive in squamous cell carcinomas and adenocarcinomas of the breast, lung, and endometrium, non-mucinous tumors of the ovary and small cell carcinomas.
アプリケーション	<b>適用あり:</b> Flow Cyt, IHC-P, ICC/IF
種交差性	<b>交差種:</b> Human
免疫原	Tissue, cells or virus corresponding to Cytokeratin 20. Electrophoretically purified Keratin K20 from Human intestinal mucosa.
ポジティブ・コントロール	Colon carcinoma. IF/ICC: Jeg3 cell line.
特記事項	<p>The Life Science industry has been in the grips of a reproducibility crisis for a number of years. Abcam is leading the way in addressing this with our range of recombinant monoclonal antibodies and knockout edited cell lines for gold-standard validation. Please check that this product meets your needs before purchasing.</p> <p>If you have any questions, special requirements or concerns, please send us an inquiry and/or contact our Support team ahead of purchase. Recommended alternatives for this product can be found below, along with publications, customer reviews and Q&amp;As</p>

#### 製品の特性

製品の状態	Liquid
保存方法	Shipped at 4°C. Upon delivery aliquot and store at -20°C. Avoid freeze / thaw cycles.
バッファー	<p>pH: 7.30</p> <p>Preservative: 0.1% Sodium azide</p> <p>Constituents: PBS, Carrier protein</p>
精製度	Van Gogh Yellow Diluent
ポリ/モノ	Tissue culture supernatant
	モノクローナル

クローン名	Ks20.8
ミエローマ	unknown
アイソタイプ	IgG2a
軽鎖の種類	unknown

アプリケーション

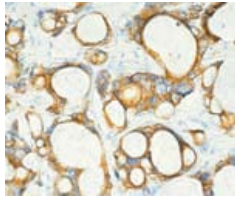
The Abpromise guarantee      **Abpromise保証は、次のテスト済みアプリケーションにおけるab854の使用に適用されます**  
 アプリケーションノートには、推奨の開始希釈率がありますが、適切な希釈率につきましてはご確認ください。

アプリケーション	Abreviews	特記事項
Flow Cyt		1/50. (Also see PMID: 20332776) <b>ab170191</b> - Mouse monoclonal IgG2a, is suitable for use as an isotype control with this antibody.
IHC-P	★★★★★ (1)	Use at an assay dependent concentration. This antibody may be diluted to a titer of 1:50-1:100 in an ABC method.We suggest an incubation period of 30-60 minutes at room temperature.
ICC/IF	★★★★★ (1)	1/200.

ターゲット情報

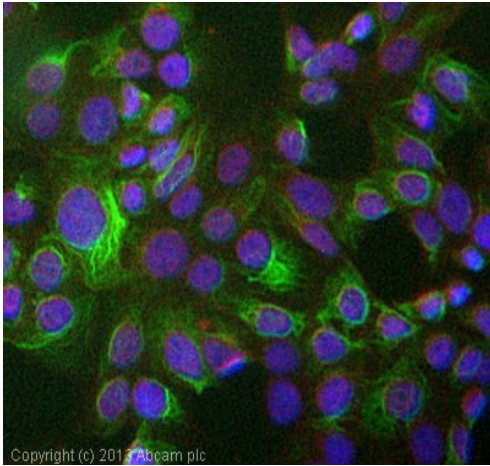
機能	Plays a significant role in maintaining keratin filament organization in intestinal epithelia. When phosphorylated, plays a role in the secretion of mucin in the small intestine.
組織特異性	Expressed predominantly in the intestinal epithelium. Expressed in luminal cells of colonic mucosa. Also expressed in the Merkel cells of keratinized oral mucosa; specifically at the tips of some rete ridges of the gingival mucosa, in the basal layer of the palatal mucosa and in the taste buds of lingual mucosa.
配列類似性	Belongs to the intermediate filament family.
発生段階	First detected at embryonic week 8 in individual 'converted' simple epithelial cells of the developing intestinal mucosa. In later fetal stages, synthesis extends over most goblet cells and a variable number of villus enterocytes. In the developing gastric and intestinal mucosa, expressed in all enterocytes and goblet cells as well as certain 'low-differentiated' columnar cells, whereas the neuroendocrine and Paneth cells are negative.
翻訳後修飾	Hyperphosphorylation at Ser-13 occurs during the early stages of apoptosis but becomes less prominent during the later stages. Phosphorylation at Ser-13 also increases in response to stress brought on by cell injury. Proteolytically cleaved by caspases during apoptosis. Cleavage occurs at Asp-228.
細胞内局在	Cytoplasm.

画像



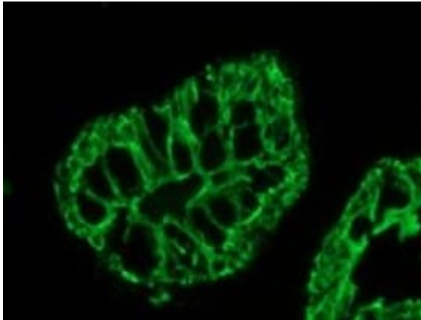
Immunohistochemistry (Formalin/PFA-fixed paraffin-embedded sections) - Anti-Cytokeratin 20 antibody [Ks20.8] (ab854)

ab854 staining cytokeratin in human colon cancer tissue section by Immunohistochemistry (Formalin/ PFA fixed paraffin embedded tissue sections).



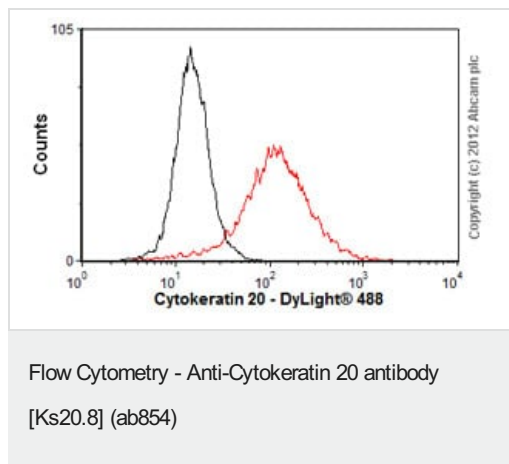
Immunocytochemistry/ Immunofluorescence - Anti-Cytokeratin 20 antibody [Ks20.8] (ab854)

ICC/IF image of ab854 stained Jeg3 cells. The cells were 4% formaldehyde fixed (10 min) and then incubated in 1%BSA / 10% normal goat serum / 0.3M glycine in 0.1% PBS-Tween for 1h to permeabilise the cells and block non-specific protein-protein interactions. The cells were then incubated with the antibody (ab854, 1/200 dilution) overnight at +4°C. The secondary antibody (green) was **ab96879**, DyLight® 488 goat anti-mouse IgG (H+L) used at a 1/250 dilution for 1h. Alexa Fluor® 594 WGA was used to label plasma membranes (red) at a 1/200 dilution for 1h. DAPI was used to stain the cell nuclei (blue) at a concentration of 1.43µM



Immunocytochemistry/ Immunofluorescence - Anti-Cytokeratin 20 antibody [Ks20.8] (ab854)

Immunofluorescent analysis of human colon epithelium, staining Cytokeratin 20 with ab854.



Overlay histogram showing LoVo cells stained with ab854 (red line). The cells were fixed with 80% methanol (5 min) and then permeabilized with 0.1% PBS-Tween for 20 min. The cells were then incubated in 1x PBS / 10% normal goat serum / 0.3M glycine to block non-specific protein-protein interactions followed by the antibody (ab854, 1/50 dilution) for 30 min at 22°C. The secondary antibody used was DyLight® 488 goat anti-mouse IgG (H+L) (**ab96879**) at 1/500 dilution for 30 min at 22°C. Isotype control antibody (black line) was mouse IgG2a [ICIGG2A] (**ab91361**, 2µg/1x10<sup>6</sup> cells) used under the same conditions. Acquisition of >5,000 events was performed.

**Please note:** All products are "FOR RESEARCH USE ONLY. NOT FOR USE IN DIAGNOSTIC PROCEDURES"

### Our Abpromise to you: Quality guaranteed and expert technical support

- Replacement or refund for products not performing as stated on the datasheet
- Valid for 12 months from date of delivery
- Response to your inquiry within 24 hours
- We provide support in Chinese, English, French, German, Japanese and Spanish
- Extensive multi-media technical resources to help you
- We investigate all quality concerns to ensure our products perform to the highest standards

If the product does not perform as described on this datasheet, we will offer a refund or replacement. For full details of the Abpromise, please visit <https://www.abcam.co.jp/abpromise> or contact our technical team.

### Terms and conditions

- Guarantee only valid for products bought direct from Abcam or one of our authorized distributors