

# Anti-Cytokeratin 18 antibody [EPR1611] ab133302

リコンビナント RabMAb

## 2 References [画像数 3](#)

### 製品の概要

製品名	Anti-Cytokeratin 18 antibody [EPR1611]
製品の詳細	Rabbit monoclonal [EPR1611] to Cytokeratin 18
由来種	Rabbit
アプリケーション	<b>適用あり:</b> WB, ICC/IF <b>適用なし:</b> Flow Cyt, IHC-P or IP
種交差性	<b>交差種:</b> Human
免疫原	Synthetic peptide. This information is proprietary to Abcam and/or its suppliers.
ポジティブ・コントロール	MCF-7, A431, and HeLa whole cell lysate ( <a href="#">ab150035</a> ), HeLa cells
特記事項	<p>This product is a recombinant monoclonal antibody, which offers several advantages including:</p> <ul style="list-style-type: none"><li>- High batch-to-batch consistency and reproducibility</li><li>- Improved sensitivity and specificity</li><li>- Long-term security of supply</li><li>- Animal-free production</li></ul> <p>For more information <a href="#">see here</a>.</p> <p>Our RabMAb<sup>®</sup> technology is a patented hybridoma-based technology for making rabbit monoclonal antibodies. For details on our patents, please refer to <a href="#">RabMAb<sup>®</sup> patents</a>.</p> <p>Mouse, Rat: We have preliminary internal testing data to indicate this antibody may not react with these species. Please contact us for more information.</p>

### 製品の特性

製品の状態	Liquid
保存方法	Shipped at 4°C. Upon delivery aliquot and store at -20°C. Avoid repeated freeze / thaw cycles.
バッファー	pH: 7.2 Preservative: 0.05% Sodium azide Constituents: 0.1% BSA, 40% Glycerol (glycerin, glycerine), 9.85% Tris glycine, 50% Tissue culture supernatant
精製度	Tissue culture supernatant
ポリ/モノ	モノクローナル

クローン名                   EPR1611  
アイソタイプ                 IgG

#### アプリケーション

**The Abpromise guarantee**       **Abpromise保証は、** 次のテスト済みアプリケーションにおけるab133302の使用に適用されます  
アプリケーションノートには、推奨の開始希釈率がありますが、適切な希釈率につきましてはご検討ください。

アプリケーション	Abreviews	特記事項
WB		1/10000 - 1/50000. Predicted molecular weight: 48 kDa.
ICC/IF		1/100 - 1/250.

**追加情報**                               Is unsuitable for Flow Cyt, IHC-P or IP.

#### ターゲット情報

**機能**                                       Involved in the uptake of thrombin-antithrombin complexes by hepatic cells (By similarity). When phosphorylated, plays a role in filament reorganization. Involved in the delivery of mutated CFTR to the plasma membrane. Together with KRT8, is involved in interleukin-6 (IL-6)-mediated barrier protection.

**組織特異性**                               Expressed in colon, placenta, liver and very weakly in exocervix. Increased expression observed in lymph nodes of breast carcinoma.

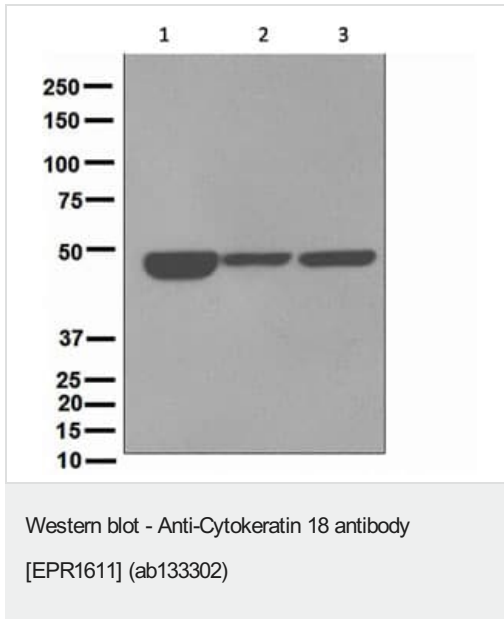
**関連疾患**                                   Defects in KRT18 are a cause of cirrhosis (CIRRH) [MIM:215600].

**配列類似性**                               Belongs to the intermediate filament family.

**翻訳後修飾**                               Phosphorylation at Ser-34 increases during mitosis. Hyperphosphorylated at Ser-53 in diseased cirrhosis liver. Phosphorylation increases by IL-6.  
Proteolytically cleaved by caspases during epithelial cell apoptosis. Cleavage occurs at Asp-238 by either caspase-3, caspase-6 or caspase-7.  
O-glycosylated at multiple sites; glycans consist of single N-acetylglucosamine residues.

**細胞内局在**                               Cytoplasm > perinuclear region.

#### 画像



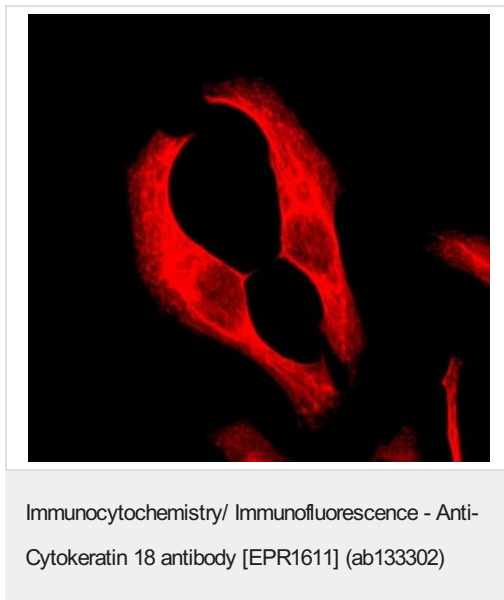
**All lanes :** Anti-Cytokeratin 18 antibody [EPR1611] (ab133302) at 1/10000 dilution

**Lane 1 :** MCF-7 cell lysates

**Lane 2 :** A431 cell lysates

**Lane 3 :** HeLa cell lysates

**Predicted band size:** 48 kDa



Immunofluorescence analysis of HeLa cells labelled with ab133302 at 1/100 dilution.

### Why choose a recombinant antibody?



Anti-Cytokeratin 18 antibody [EPR1611] (ab133302)

**Please note:** All products are "FOR RESEARCH USE ONLY. NOT FOR USE IN DIAGNOSTIC PROCEDURES"

### Our Abpromise to you: Quality guaranteed and expert technical support

---

- Replacement or refund for products not performing as stated on the datasheet
- Valid for 12 months from date of delivery
- Response to your inquiry within 24 hours
- We provide support in Chinese, English, French, German, Japanese and Spanish
- Extensive multi-media technical resources to help you
- We investigate all quality concerns to ensure our products perform to the highest standards

If the product does not perform as described on this datasheet, we will offer a refund or replacement. For full details of the Abpromise, please visit <https://www.abcam.co.jp/abpromise> or contact our technical team.

### Terms and conditions

---

- Guarantee only valid for products bought direct from Abcam or one of our authorized distributors