

Anti-Cytokeratin 16/K16 antibody [EP1615Y] ab76416

リコンビナント **RabMAb**

★★★★★ **2 Abreviews** **19 References** 画像数 7

製品の概要

製品名	Anti-Cytokeratin 16/K16 antibody [EP1615Y]
製品の詳細	Rabbit monoclonal [EP1615Y] to Cytokeratin 16/K16
由来種	Rabbit
特異性	Several customers have found that this antibody gives good results in mouse and rat however in our hands, we cannot obtain positive results. This antibody is therefore no longer covered by our Abpromise guarantee for use in mouse or rat.
アプリケーション	適用あり: Flow Cyt (Intra), IHC-P, WB, ICC/IF 適用なし: IP
種交差性	交差種: Human
免疫原	Synthetic peptide within Human Cytokeratin 16/K16 aa 1-100 (N terminal). The exact sequence is proprietary. Database link: P08779
ポジティブ・コントロール	HaCat cell lysate; human squamous cervical carcinoma tissue.
特記事項	This product is a recombinant monoclonal antibody, which offers several advantages including: <ul style="list-style-type: none"> - High batch-to-batch consistency and reproducibility - Improved sensitivity and specificity - Long-term security of supply - Animal-free production For more information see here . Our RabMAb [®] technology is a patented hybridoma-based technology for making rabbit monoclonal antibodies. For details on our patents, please refer to RabMAb[®] patents .

製品の特性

製品の状態	Liquid
保存方法	Shipped at 4°C. Store at +4°C short term (1-2 weeks). Upon delivery aliquot. Store at -20°C. Avoid freeze / thaw cycle.
バッファー	pH: 7.20 Preservative: 0.01% Sodium azide Constituents: 49% PBS, 50% Glycerol (glycerin, glycerine), 0.05% BSA

精製度	Protein A purified
ポリ/モノ	モノクローナル
クローン名	EP1615Y
アイソタイプ	IgG

アプリケーション

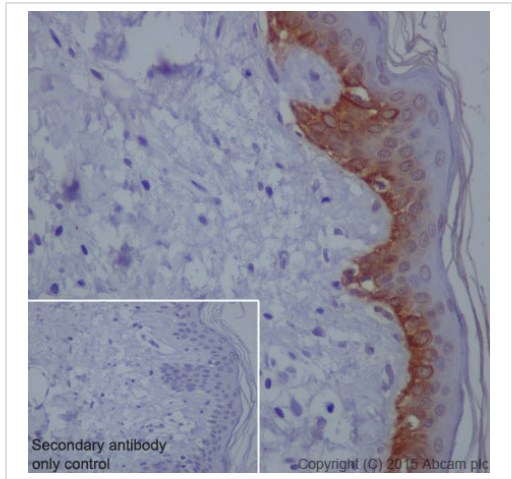
The Abpromise guarantee Abpromise保証は、次のテスト済みアプリケーションにおけるab76416の使用に適用されます
 アプリケーションノートには、推奨の開始希釈率がありますが、適切な希釈率につきましてはご確認ください。

アプリケーション	Abreviews	特記事項
Flow Cyt (Intra)		1/50 - 1/150. ab172730 - Rabbit monoclonal IgG, is suitable for use as an isotype control with this antibody.
IHC-P	★★★★★ (2)	1/100 - 1/250. Perform heat mediated antigen retrieval via the pressure cooker method before commencing with IHC staining protocol.
WB		1/5000 - 1/10000. Predicted molecular weight: 51 kDa.
ICC/IF		1/100 - 1/150.

追加情報 Is unsuitable for IP.

ターゲット情報

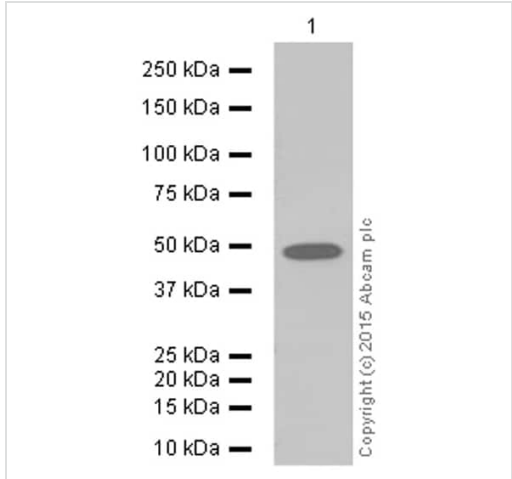
組織特異性	Expressed in the hair follicle, nail bed and in mucosal stratified squamous epithelia and, suprabasally, in oral epithelium and palmoplantar epidermis. Also found in luminal cells of sweat and mammary gland ducts.
関連疾患	<p>Defects in KRT16 are a cause of pachyonychia congenita type 1 (PC1) [MIM:167200]; also known as Jadassohn-Lewandowsky syndrome. PC1 is an autosomal dominant ectodermal dysplasia characterized by hypertrophic nail dystrophy resulting in onychogryposis (thickening and increase in curvature of the nail), palmoplantar keratoderma, follicular hyperkeratosis, and oral leukokeratosis. Hyperhidrosis of the hands and feet is usually present.</p> <p>Defects in KRT16 are the cause of palmoplantar keratoderma non-epidermolytic focal (FNEPPK) [MIM:613000]. A dermatological disorder characterized by non-epidermolytic palmoplantar keratoderma limited to the pressure points on the balls of the feet, with later mild involvement on the palms. Oral, genital and follicular keratotic lesions are often present.</p> <p>Defects in KRT16 are a cause of unilateral palmoplantar verrucous nevus (UPVN) [MIM:144200]. UPVN is characterized by a localized thickening of the skin in parts of the right palm and the right sole.</p> <p>Note=KRT16 and KRT17 are coexpressed only in pathological situations such as metaplasias and carcinomas of the uterine cervix and in psoriasis vulgaris.</p>
配列類似性	Belongs to the intermediate filament family.



Immunohistochemistry (Formalin/PFA-fixed paraffin-embedded sections) - Anti-Cytokeratin 16/K16 antibody [EP1615Y] (ab76416)

ab76416 staining Cytokeratin 16/K16 in human skin tissue sections by Immunohistochemistry (IHC-P - paraformaldehyde-fixed, paraffin-embedded sections). Tissue was fixed with paraformaldehyde and antigen retrieval was by heat mediation in a EDTA buffer. Samples were incubated with primary antibody at a dilution of 1/500. A goat anti-rabbit IgG H&L (HRP) [ab97051](#) was used as the secondary antibody at a dilution of 1/500.

Negative control 1: PBS in place of primary antibody.



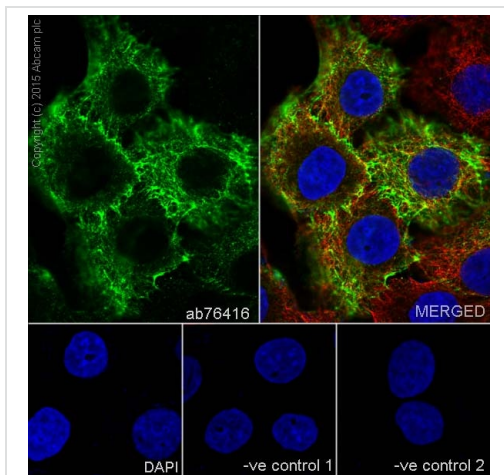
Western blot - Anti-Cytokeratin 16/K16 antibody [EP1615Y] (ab76416)

Anti-Cytokeratin 16/K16 antibody [EP1615Y] (ab76416) at 1/10000 dilution + HACAT (human keratinocyte) whole cell lysate at 10 µg

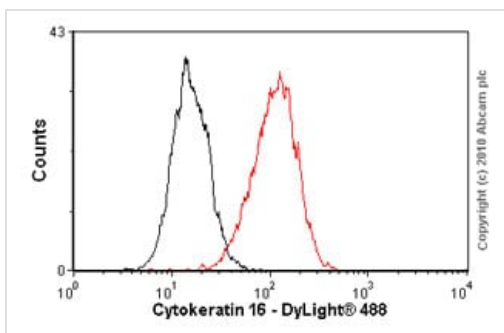
Secondary

Goat Anti-Rabbit IgG, (H+L), Peroxidase conjugated ([ab97051](#) at 1/20000 dilution

Predicted band size: 51 kDa



Immunocytochemistry/ Immunofluorescence - Anti-Cytokeratin 16/K16 antibody [EP1615Y] (ab76416)



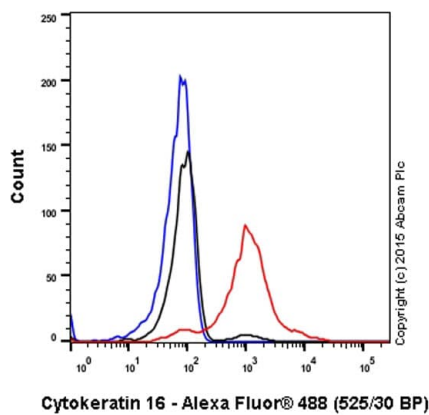
Flow Cytometry (Intracellular) - Anti-Cytokeratin 16/K16 antibody [EP1615Y] (ab76416)

ab76416 staining Cytokeratin 16/K16 in A431 (human epidermoid carcinoma) cells by ICC/IF (Immunocytochemistry/immunofluorescence). Cells were fixed with 4% Paraformaldehyde and permeabilized with 0.1% Triton X-100. Samples were incubated with primary antibody at a dilution of 1/100. A goat anti rabbit IgG (Alexa Fluor® 488) ([ab150077](#)) was used as the secondary antibody. [ab7291](#) and [ab150120](#) were used as counterstains for primary antibody [ab75748](#) and secondary antibody [ab150077](#) respectively and DAPI was used as a nuclear counterstain.

Negative control 1: Rabbit primary antibody and anti-mouse secondary antibody ([ab150120](#))

Negative control 2: Mouse primary antibody ([ab7291](#)) and anti-rabbit secondary antibody ([ab150077](#))

Overlay histogram showing HepG2 cells stained with unpurified ab76416 (red line). The cells were fixed with methanol (5 min) and then permeabilized with 0.1% PBS-Triton for 20 min. The cells were then incubated in 1x PBS/10% normal goat serum / 0.3M glycine to block non-specific protein-protein interactions followed by the antibody (ab76416, 1/50 dilution) for 30 min at 22°C. The secondary antibody used was DyLight® 488 goat anti-rabbit IgG (H+L) ([ab96899](#)) at 1/500 dilution for 30 min at 22°C. Isotype control antibody (black line) was rabbit monoclonal IgG (1µg/1x10⁶ cells) used under the same conditions. Acquisition of >5,000 events was performed. This antibody gave a positive signal in HepG2 cells fixed with 4% paraformaldehyde/permeabilized in 0.1% PBS-Triton used under the same conditions.

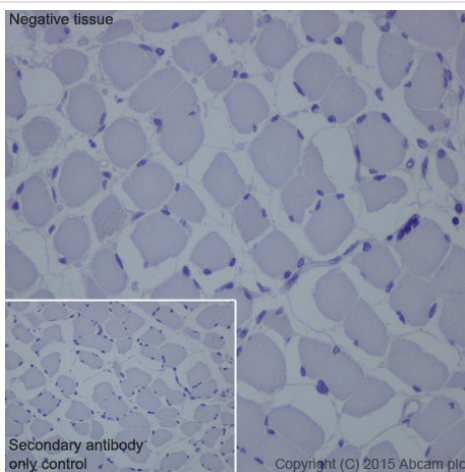


Flow Cytometry (Intracellular) - Anti-Cytokeratin 16/K16 antibody [EP1615Y] (ab76416)

ab76416 staining CytoKeratin 16/K16 in HACAT (human keratinocyte) cell line by intracellular flow cytometry. Cells were fixed with 4% paraformaldehyde and the sample was incubated with the primary antibody at a dilution of 1/150. A goat anti rabbit IgG (Alexa Fluor® 488) at a dilution of 1/500 was used as the secondary antibody.

Isotype control: Rabbit monoclonal IgG (Black)

Unlabelled control: Cell without incubation with primary antibody and secondary antibody (Blue)

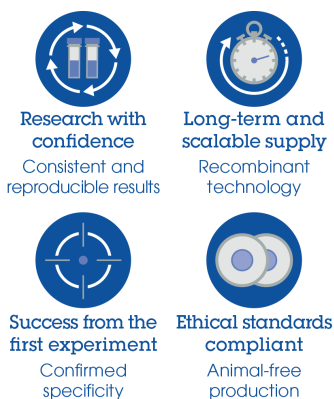


Immunohistochemistry (Formalin/PFA-fixed paraffin-embedded sections) - Anti-Cytokeratin 16/K16 antibody [EP1615Y] (ab76416)

ab76416 staining CytoKeratin 16/K16 in human skeletal muscle sections by Immunohistochemistry (IHC-P - paraformaldehyde-fixed, paraffin-embedded sections). Tissue was fixed with paraformaldehyde and antigen retrieval was by heat mediation in a EDTA buffer. Samples were incubated with primary antibody at a dilution of 1/500. A goat anti-rabbit IgG H&L (HRP) **ab97051** was used as the secondary antibody at a dilution of 1/500.

Negative control 1: PBS in place of primary antibody.

Why choose a recombinant antibody?



Anti-Cytokeratin 16/K16 antibody [EP1615Y] (ab76416)

Please note: All products are "FOR RESEARCH USE ONLY. NOT FOR USE IN DIAGNOSTIC PROCEDURES"

Our Abpromise to you: Quality guaranteed and expert technical support

- Replacement or refund for products not performing as stated on the datasheet
- Valid for 12 months from date of delivery
- Response to your inquiry within 24 hours
- We provide support in Chinese, English, French, German, Japanese and Spanish
- Extensive multi-media technical resources to help you
- We investigate all quality concerns to ensure our products perform to the highest standards

If the product does not perform as described on this datasheet, we will offer a refund or replacement. For full details of the Abpromise, please visit <https://www.abcam.co.jp/abpromise> or contact our technical team.

Terms and conditions

- Guarantee only valid for products bought direct from Abcam or one of our authorized distributors