

Anti-Cytokeratin 10 antibody [AE20] ab237775

4 References **画像数 3**

製品の概要

製品名	Anti-Cytokeratin 10 antibody [AE20]
製品の詳細	Mouse monoclonal [AE20] to Cytokeratin 10
由来種	Mouse
アプリケーション	適用あり: IHC-P, IHC-Fr, WB
種交差性	交差種: Human
免疫原	Full length protein. This information is proprietary to Abcam and/or its suppliers.
ポジティブ・コントロール	IHC-P: Human skin tissue. IHC-Fr: Human skin tissue. WB: Human skin tissue lysate.
特記事項	<p>This antibody clone is manufactured by Abcam. If you require a custom buffer formulation or conjugation for your experiments, please contact orders@abcam.com.</p> <p>The Life Science industry has been in the grips of a reproducibility crisis for a number of years. Abcam is leading the way in addressing this with our range of recombinant monoclonal antibodies and knockout edited cell lines for gold-standard validation. Please check that this product meets your needs before purchasing.</p> <p>If you have any questions, special requirements or concerns, please send us an inquiry and/or contact our Support team ahead of purchase. Recommended alternatives for this product can be found below, along with publications, customer reviews and Q&As</p>

製品の特性

製品の状態	Liquid
保存方法	Shipped at 4°C. Store at +4°C short term (1-2 weeks). Upon delivery aliquot. Store at -20°C long term. Avoid freeze / thaw cycle.
バッファー	Preservative: 0.02% Sodium azide Constituents: PBS, 6.97% L-Arginine
精製度	Protein G purified
特記事項(精製)	Purified from TCS.
ポリ/モノ	モノクローナル
クローン名	AE20
アイソタイプ	IgG1

アプリケーション

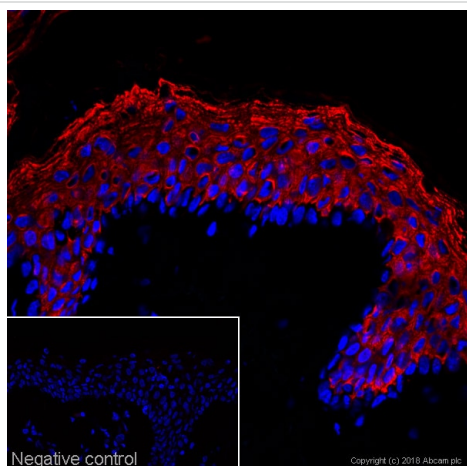
The Abpromise guarantee **Abpromise保証は、**次のテスト済みアプリケーションにおけるab237775の使用に適用されます
アプリケーションノートには、推奨の開始希釈率がありますが、適切な希釈率につきましてはご検討ください。

アプリケーション	Abreviews	特記事項
IHC-P		Use a concentration of 0.1 µg/ml. Perform heat mediated antigen retrieval with citrate buffer pH 6 before commencing with IHC staining protocol.
IHC-Fr		Use a concentration of 1 µg/ml.
WB		Use a concentration of 1 µg/ml. Predicted molecular weight: 59 kDa.

ターゲット情報

組織特異性	Seen in all suprabasal cell layers including stratum corneum.
関連疾患	<p>Defects in KRT10 are a cause of bullous congenital ichthyosiform erythroderma (BCIE) [MIM:113800]; also known as epidermolytic hyperkeratosis (EHK) or bullous erythroderma ichthyosiformis congenita of Brocq. BCIE is an autosomal dominant skin disorder characterized by widespread blistering and an ichthyotic erythroderma at birth that persist into adulthood. Histologically there is a diffuse epidermolytic degeneration in the lower spinous layer of the epidermis. Within a few weeks from birth, erythroderma and blister formation diminish and hyperkeratoses develop.</p> <p>Defects in KRT10 are a cause of ichthyosis annular epidermolytic (AEI) [MIM:607602]; also known as cyclic ichthyosis with epidermolytic hyperkeratosis. AEI is a skin disorder resembling bullous congenital ichthyosiform erythroderma. Affected individuals present with bullous ichthyosis in early childhood and hyperkeratotic lichenified plaques in the flexural areas and extensor surfaces at later ages. The feature that distinguishes AEI from BCIE is dramatic episodes of flares of annular polycyclic plaques with scale, which coalesce to involve most of the body surface and can persist for several weeks or even months.</p>
配列類似性	Belongs to the intermediate filament family.

画像



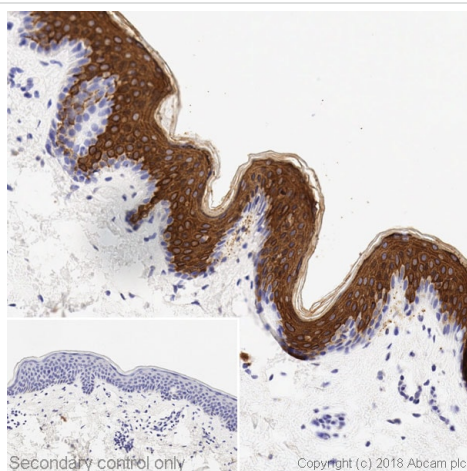
Immunohistochemistry (Frozen sections) - Anti-Cytokeratin 10 antibody [AE20] (ab237775)

IHC image of ab237775 staining in 4% formaldehyde fixed frozen tissue section of human skin.

Non-specific protein-protein interactions were blocked using TBS containing 0.025% (v/v) Triton X-100, 0.3M (w/v) glycine and 3% (w/v) BSA for 1 hour at room temperature. The section was then incubated with **ab12077** (1 µg/ml) in TBS containing 0.025% (v/v) Triton X-100 and 3% (w/v) BSA overnight at +4°C. The section was then incubated with **ab150119** (Goat polyclonal Secondary Antibody to Mouse IgG - H&L (Alexa Fluor® 647)) and DAPI for 1 hour at room temperature.

The DAPI only control (no antibody) inset shows no autofluorescence, demonstrating that any Alexa Fluor® 647 signal is derived directly from bound ab237775.

For other IHC staining systems (automated and non-automated), customers should optimize variable parameters such as antibody concentrations and incubation times.



Immunohistochemistry (Formalin/PFA-fixed paraffin-embedded sections) - Anti-Cytokeratin 10 antibody [AE20] (ab237775)

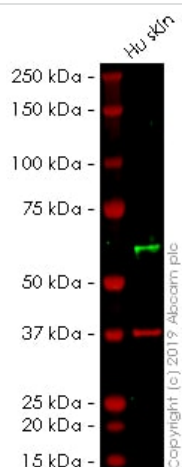
IHC image of Cytokeratin 10 staining in a section of formalin-fixed paraffin-embedded normal human skin* performed on a Leica BOND™ system using the standard protocol F.

The section was pre-treated using heat mediated antigen retrieval with sodium citrate buffer (pH 6, epitope retrieval solution 1) for 20 mins. The section was then incubated with ab237775, 0.1 µg/ml, for 15 mins at room temperature and detected using an HRP conjugated compact polymer system. DAB was used as the chromogen. The section was then counterstained with hematoxylin and mounted with DPX.

The inset secondary-only control image is taken from an identical assay without primary antibody.

For other IHC staining systems (automated and non-automated) customers should optimize variable parameters such as antigen retrieval conditions, primary antibody concentration and antibody incubation times.

**Tissue obtained from the Human Research Tissue Bank, supported by the NIHR Cambridge Biomedical Research Centre*



Western blot - Anti-Cytokeratin 10 antibody [AE20]
(ab237775)

Anti-Cytokeratin 10 antibody [AE20] (ab237775) at 1 µg/ml +
Human skin tissue lysate at 20 µg

Performed under reducing conditions.

Predicted band size: 59 kDa

This blot was produced using a 4-12% Bis-tris under the MOPS buffer system. The gel was run at 200V for 55 minutes before being transferred onto a Nitrocellulose membrane at 30V for 70 minutes. The membrane was blocked for an hour using 3% milk before ab237775 and **ab181602** (Rabbit anti-GAPDH loading control) were incubated overnight at 4°C at a 1µg/ml concentration and 1/20000 dilution respectively. Antibody binding was detected using Goat anti-Mouse IgG H&L (IRDye® 800CW) preadsorbed (**ab216772**) and Goat anti-Rabbit IgG H&L (IRDye® 680RD) preadsorbed (**ab216777**) secondary antibodies at 1/20000 dilution for 1 hour at room temperature before imaging.

Please note: All products are "FOR RESEARCH USE ONLY. NOT FOR USE IN DIAGNOSTIC PROCEDURES"

Our Abpromise to you: Quality guaranteed and expert technical support

- Replacement or refund for products not performing as stated on the datasheet
- Valid for 12 months from date of delivery
- Response to your inquiry within 24 hours
- We provide support in Chinese, English, French, German, Japanese and Spanish
- Extensive multi-media technical resources to help you
- We investigate all quality concerns to ensure our products perform to the highest standards

If the product does not perform as described on this datasheet, we will offer a refund or replacement. For full details of the Abpromise, please visit <https://www.abcam.co.jp/abpromise> or contact our technical team.

Terms and conditions

- Guarantee only valid for products bought direct from Abcam or one of our authorized distributors