

Anti-Cytohesin 2 antibody [10A12] ab2728

3 References [画像数 5](#)

製品の概要

製品名	Anti-Cytohesin 2 antibody [10A12]
製品の詳細	Mouse monoclonal [10A12] to Cytohesin 2
由来種	Mouse
特異性	Detects recombinant human cytohesin-2 (ARNO).
アプリケーション	適用あり: ICC/IF, IHC-P 適用なし: WB
種交差性	交差種: Mouse, Human
免疫原	Recombinant full length protein (His-tag) corresponding to Human Cytohesin 2. Database link: Q99418
特記事項	<p>The Life Science industry has been in the grips of a reproducibility crisis for a number of years. Abcam is leading the way in addressing this with our range of recombinant monoclonal antibodies and knockout edited cell lines for gold-standard validation. Please check that this product meets your needs before purchasing.</p> <p>If you have any questions, special requirements or concerns, please send us an inquiry and/or contact our Support team ahead of purchase. Recommended alternatives for this product can be found below, along with publications, customer reviews and Q&As</p>

製品の特性

製品の状態	Liquid
保存方法	Shipped at 4°C. Store at +4°C short term (1-2 weeks). Upon delivery aliquot. Store at -20°C or -80°C. Avoid freeze / thaw cycle.
バッファー	Preservative: 0.05% Sodium azide Constituents: 0.1% BSA, 99% PBS
特記事項(精製)	PEG purified IgG1
ポリ/モノ	モノクローナル
クローン名	10A12
アイソタイプ	IgG1

アプリケーション

The Abpromise guarantee

Abpromise保証は、次のテスト済みアプリケーションにおけるab2728の使用に適用されます

アプリケーションノートには、推奨の開始希釈率がありますが、適切な希釈率につきましてはご検討ください。

アプリケーション	Abreviews	特記事項
ICC/IF		1/20.
IHC-P		1/25 - 1/200.

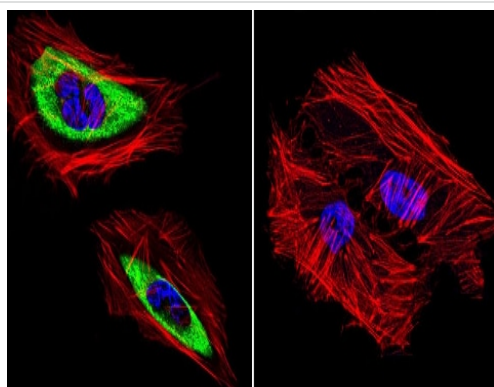
追加情報

Is unsuitable for WB.

ターゲット情報

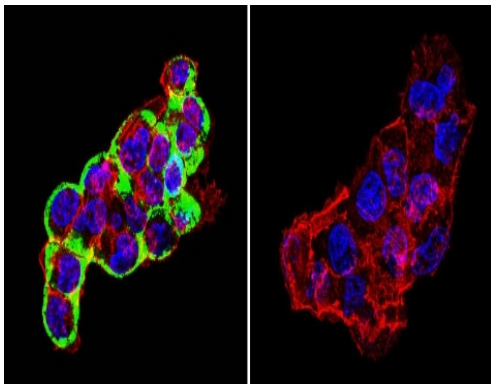
機能	Acts as a guanine-nucleotide exchange factor (GEF). Promotes guanine-nucleotide exchange on ARF1, ARF3 and ARF6. Promotes the activation of ARF factors through replacement of GDP with GTP. The cell membrane form, in association with ARL4 proteins, recruits ARF6 to the plasma membrane.
組織特異性	Ubiquitous.
配列類似性	Contains 1 PH domain. Contains 1 SEC7 domain.
ドメイン	The PH domain is necessary and sufficient for plasma membrane relocalization.
細胞内局在	Cell membrane. Cytoplasm. Both isoform 1 and isoform 2 are recruited to the cell membrane through its association with ARL4A, ARL4C and ARL4D. Requires also interaction with phosphoinositides for targeting to plasma membrane.

画像



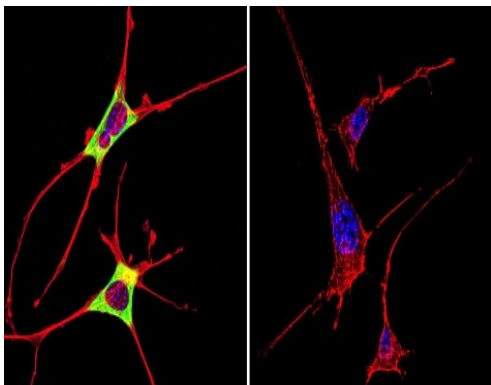
Immunocytochemistry/Immunofluorescence analysis of Cytohesin 2 in HeLa cells. Cells were grown on chamber slides and fixed with formaldehyde prior to staining. Cells were probed without (control) or with ab2728 (1:100) overnight at 4°C, washed with PBS and incubated with a DyLight-488 conjugated secondary antibody. Cytohesin 2 staining (green), F-Actin staining with Phalloidin (red) and nuclei with DAPI (blue) is shown. Images were taken at 60X magnification.

Immunocytochemistry/ Immunofluorescence - Anti-Cytohesin 2 antibody [10A12] (ab2728)



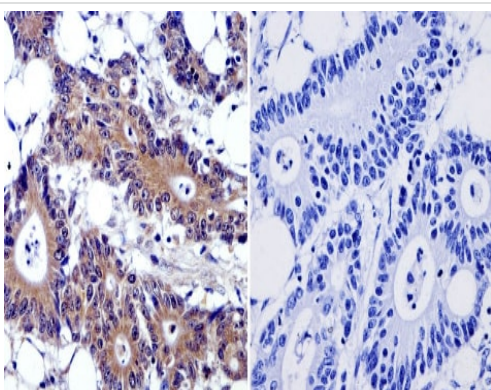
Immunocytochemistry/ Immunofluorescence - Anti-Cytohesin 2 antibody [10A12] (ab2728)

Immunocytochemistry/Immunofluorescence analysis of Cytohesin 2 in HepG2 cells. Cells were grown on chamber slides and fixed with formaldehyde prior to staining. Cells were probed without (control) or with ab2728 (1:100) overnight at 4°C, washed with PBS and incubated with a DyLight-488 conjugated secondary antibody. Cytohesin 2 staining (green), F-Actin staining with Phalloidin (red) and nuclei with DAPI (blue) is shown. Images were taken at 60X magnification.



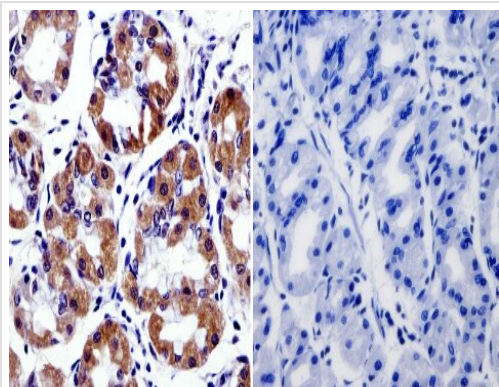
Immunocytochemistry/ Immunofluorescence - Anti-Cytohesin 2 antibody [10A12] (ab2728)

Immunocytochemistry/Immunofluorescence analysis of Cytohesin 2 in NIH-3T3 cells. Cells were grown on chamber slides and fixed with formaldehyde prior to staining. Cells were probed without (control) or with ab2728 (1:100) overnight at 4°C, washed with PBS and incubated with a DyLight-488 conjugated secondary antibody. Cytohesin 2 staining (green), F-Actin staining with Phalloidin (red) and nuclei with DAPI (blue) is shown. Images were taken at 60X magnification.



Immunohistochemistry (Formalin/PFA-fixed paraffin-embedded sections) - Anti-Cytohesin 2 antibody [10A12] (ab2728)

Immunohistochemistry (Formalin/PFA-fixed paraffin-embedded sections) was performed on normal biopsies of deparaffinized human colon carcinoma tissue. Heat induced antigen retrieval was performed using 10mM sodium citrate (pH6.0) buffer, microwaved for 8-15 minutes. Tissues were blocked in 3% BSA-PBS for 30 minutes at room temperature and incubated with ab2728 (1:50) or without primary antibody (negative control) overnight at 4°C in a humidified chamber. Tissues were washed with PBST and endogenous peroxidase activity was quenched with a peroxidase suppressor. Detection was performed using a biotin-conjugated secondary antibody and SA-HRP, followed by colorimetric detection using DAB. Tissues were counterstained with hematoxylin and prepped for mounting.



Immunohistochemistry (Formalin/PFA-fixed paraffin-embedded sections) - Anti-Cytohesin 2 antibody [10A12] (ab2728)

Immunohistochemistry (Formalin/PFA-fixed paraffin-embedded sections) was performed on normal biopsies of deparaffinized human stomach tissue. Heat induced antigen retrieval was performed using 10mM sodium citrate (pH6.0) buffer, microwaved for 8-15 minutes. Tissues were blocked in 3% BSA-PBS for 30 minutes at room temperature and incubated with ab2728 (1:50) or without primary antibody (negative control) overnight at 4°C in a humidified chamber. Tissues were washed with PBST and endogenous peroxidase activity was quenched with a peroxidase suppressor. Detection was performed using a biotin-conjugated secondary antibody and SA-HRP, followed by colorimetric detection using DAB. Tissues were counterstained with hematoxylin and prepped for mounting.

Please note: All products are "FOR RESEARCH USE ONLY. NOT FOR USE IN DIAGNOSTIC PROCEDURES"

Our Abpromise to you: Quality guaranteed and expert technical support

- Replacement or refund for products not performing as stated on the datasheet
- Valid for 12 months from date of delivery
- Response to your inquiry within 24 hours
- We provide support in Chinese, English, French, German, Japanese and Spanish
- Extensive multi-media technical resources to help you
- We investigate all quality concerns to ensure our products perform to the highest standards

If the product does not perform as described on this datasheet, we will offer a refund or replacement. For full details of the Abpromise, please visit <https://www.abcam.co.jp/abpromise> or contact our technical team.

Terms and conditions

- Guarantee only valid for products bought direct from Abcam or one of our authorized distributors