



Anti-Cytochrome P450 4A/CYP4A11 antibody ab3573

15 References **画像数 7**

製品の概要

製品名	Anti-Cytochrome P450 4A/CYP4A11 antibody
製品の詳細	Rabbit polyclonal to Cytochrome P450 4A/CYP4A11
由来種	Rabbit
特異性	The immunogen is homologous to rat cytochrome P450 4A2, 4A10, 4A12 and 4A14. Gene synonyms are Cyp4a11, Cyp4a1, Cyp4a8, and Cyp4a3, respectively. The specificity to these specific forms has not been confirmed experimentally. Please note nomenclature for specific forms may differ from mouse to rat.
アプリケーション	適用あり: IHC-Fr, ICC/IF, IHC-P, WB, IP
種交差性	交差種: Mouse, Rat, Rabbit, Hamster, Cat, Dog, Human, Pig
免疫原	Synthetic peptide corresponding to Rat Cytochrome P450 4A/CYP4A11 aa 400-500. The immunogen is homologous to rat cytochrome P450 4A2, A10, A12 and A14. Database link: P08516
	 Run BLAST with  Run BLAST with
ポジティブ・コントロール	WB: Rat liver tissue lysate, H-4-II-E and HeLa cell lysate
特記事項	<p>The Life Science industry has been in the grips of a reproducibility crisis for a number of years. Abcam is leading the way in addressing this with our range of recombinant monoclonal antibodies and knockout edited cell lines for gold-standard validation. Please check that this product meets your needs before purchasing.</p> <p>If you have any questions, special requirements or concerns, please send us an inquiry and/or contact our Support team ahead of purchase. Recommended alternatives for this product can be found below, along with publications, customer reviews and Q&As</p>

製品の特性

製品の状態	Liquid
保存方法	Shipped at 4°C. Store at +4°C short term (1-2 weeks). Upon delivery aliquot. Store at -20°C or -80°C. Avoid freeze / thaw cycle.
バッファー	Preservative: 0.05% Sodium azide Constituent: 99% PBS
精製度	Whole antiserum
一次抗体 備考	The Cytochrome P450 (P450) family of enzymes is one of three enzyme systems which

metabolize the fatty acid arachadonic acid (AA) to regulators of vascular tone. P450 enzymes are monooxygenase enzymes which require several co-factors such as NADPH and P450 reductase. There are over 200 cDNA's which encode P450 protein. Epoxygenases are those P450 proteins which metabolize AA to epoxygenic acids (EETs) and w-hydroxylases are those P450 proteins which produce 19- and 20-hydroxyeicosatetraenoic acids (19- and 20-HETE). 20-HETE is converted from AA by the 4A family of P450 proteins which includes at least 8 different, though closely related isoforms. 4A1, 4A2, & 4A3 have been cloned from liver, kidney and testis and have been detected in renal, hepatic & brain microvessels.

ポリモノ

ポリクローナル

アイソタイプ

IgG

アプリケーション

The Abpromise guarantee

Abpromise保証は、次のテスト済みアプリケーションにおけるab3573の使用に適用されます

アプリケーションノートには、推奨の開始希釈率がありますが、適切な希釈率につきましてはご検討ください。

アプリケーション	Abreviews	特記事項
IHC-Fr		Use at an assay dependent concentration.
ICC/IF		1/20 - 1/200.
IHC-P		1/100 - 1/500.
WB		1/200 - 1/2000. Predicted molecular weight: 59 kDa.
IP		Use at an assay dependent concentration.

ターゲット情報

機能

Catalyzes the omega- and (omega-1)-hydroxylation of various fatty acids such as laurate, myristate and palmitate. Has little activity toward prostaglandins A1 and E1. Oxidizes arachidonic acid to 20-hydroxyeicosatetraenoic acid (20-HETE).

組織特異性

Kidney and liver.

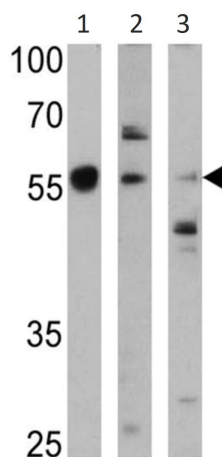
配列類似性

Belongs to the cytochrome P450 family.

細胞内局在

Endoplasmic reticulum membrane. Microsome membrane.

画像



Western blot - Anti-Cytochrome P450 4A/CYP4A11 antibody (ab3573)

All lanes : Anti-Cytochrome P450 4A/CYP4A11 antibody (ab3573) at 1/1000 dilution

Lane 1 : Rat liver tissue lysate

Lane 2 : H-4-II-E cell lysate

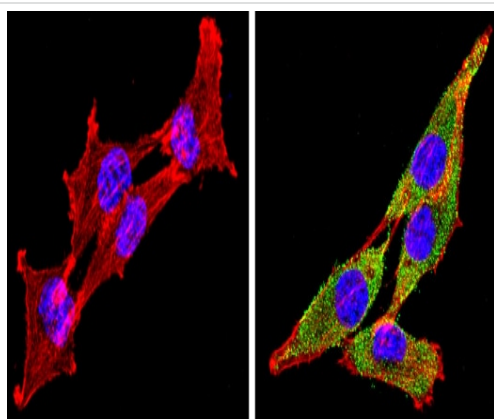
Lane 3 : HeLa cell lysate

Lysates/proteins at 25 µg per lane.

Predicted band size: 59 kDa

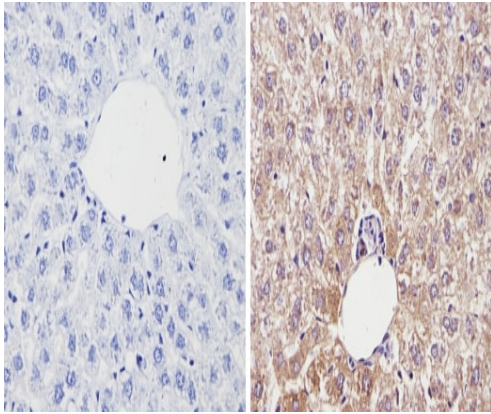
Observed band size: 58 kDa

Chemiluminescent detection



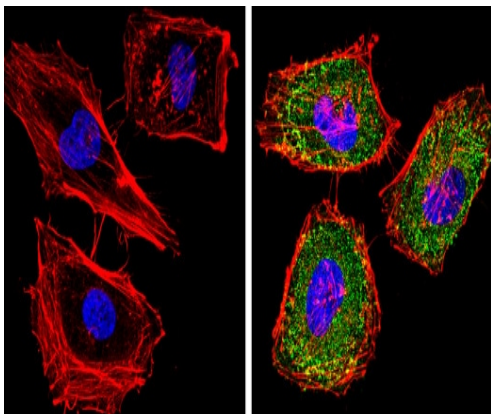
Immunocytochemistry/ Immunofluorescence - Anti-Cytochrome P450 4A/CYP4A11 antibody (ab3573)

ab3573 labelling Cytochrome P450 4A/CYP4A11 (green) in the cytoplasm and membrane of H-4-II-E (rat) cells (right), compared to control (left), by Immunocytochemistry/Immunofluorescence. Formalin-fixed cells were permeabilized with 0.1% Triton X-100 in TBS for 5-10 minutes and blocked with 3% BSA-PBS for 30 minutes at room temperature. Cells were incubated with the primary antibody (1:100 in 3% BSA-PBS) overnight at 4 °C. A DyLight-conjugated anti-rabbit was used as the secondary antibody. Red (phalloidin) - F-actin, Blue - nuclei. Images were taken at a magnification of 60x.



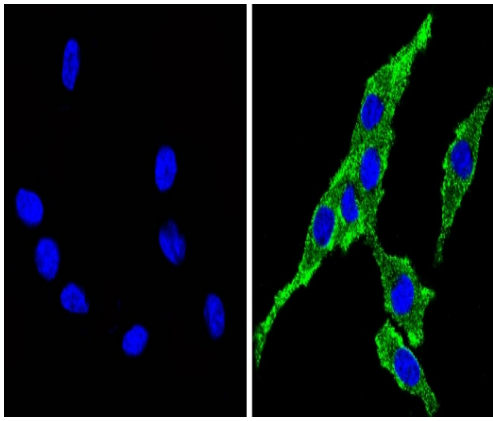
Immunohistochemistry (Formalin/PFA-fixed paraffin-embedded sections) - Anti-Cytochrome P450 4A/CYP4A11 antibody (ab3573)

ab3573 labelling Cytochrome P450 4A/CYP4A11 in the cytoplasm of Rat liver tissue (right) compared with a negative control in the absence of primary antibody (left). To expose target proteins, antigen retrieval method was performed using 10mM sodium citrate (pH 6.0) microwaved for 8-15 min. Tissues were blocked in 3% H₂O₂-methanol for 15 min at room temperature. Tissue sections were incubated with the primary antibody (1:200 in 3% BSA-PBS) overnight at 4°C. A HRP-conjugated anti-rabbit was used as the secondary antibody, followed by colorimetric detection using a DAB kit. Tissues were counterstained with hematoxylin and dehydrated with ethanol and xylene to prep for mounting.



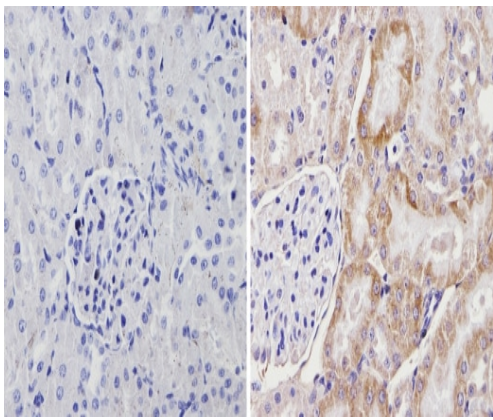
Immunocytochemistry/ Immunofluorescence - Anti-Cytochrome P450 4A/CYP4A11 antibody (ab3573)

ab3573 labelling Cytochrome P450 4A/CYP4A11 (green) in the cytoplasm and membrane of HeLa cells (right), compared to control (left), by Immunocytochemistry/Immunofluorescence. Formalin-fixed cells were permeabilized with 0.1% Triton X-100 in TBS for 5-10 minutes and blocked with 3% BSA-PBS for 30 minutes at room temperature. Cells were incubated with the primary antibody (1:100 in 3% BSA-PBS) overnight at 4 °C. A DyLight-conjugated anti-rabbit was used as the secondary antibody. Red (phalloidin) - F-actin, Blue - nuclei. Images were taken at a magnification of 60x.



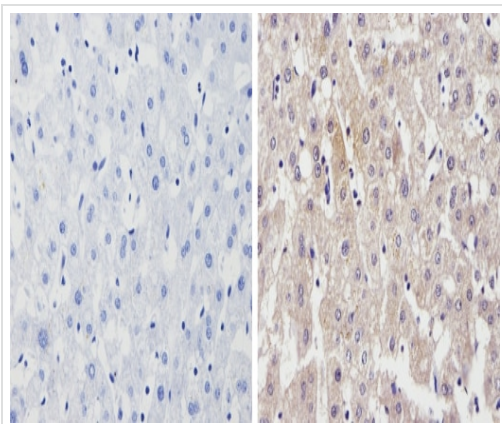
Immunocytochemistry/ Immunofluorescence - Anti-Cytochrome P450 4A/CYP4A11 antibody (ab3573)

ab3573 labelling Cytochrome P450 4A/CYP4A11 (green) in the cytoplasm and membrane of PC12 cells (right), compared to control (left), by Immunocytochemistry/Immunofluorescence. Formalin-fixed cells were permeabilized with 0.1% Triton X-100 in TBS for 5-10 minutes and blocked with 3% BSA-PBS for 30 minutes at room temperature. Cells were incubated with the primary antibody (1:100 in 3% BSA-PBS) overnight at 4 °C. A DyLight-conjugated anti-rabbit was used as the secondary antibody. Red (phalloidin) - F-actin, Blue - nuclei. Images were taken at a magnification of 60x.



Immunohistochemistry (Formalin/PFA-fixed paraffin-embedded sections) - Anti-Cytochrome P450 4A/CYP4A11 antibody (ab3573)

ab3573 labelling Cytochrome P450 4A/CYP4A11 in the cytoplasm of Rat kidney tissue (right) compared with a negative control in the absence of primary antibody (left). To expose target proteins, antigen retrieval method was performed using 10mM sodium citrate (pH 6.0) microwaved for 8-15 min. Tissues were blocked in 3% H₂O₂-methanol for 15 min at room temperature. Tissue sections were incubated with the primary antibody (1:200 in 3% BSA-PBS) overnight at 4°C. A HRP-conjugated anti-rabbit was used as the secondary antibody, followed by colorimetric detection using a DAB kit. Tissues were counterstained with hematoxylin and dehydrated with ethanol and xylene to prep for mounting.



Immunohistochemistry (Formalin/PFA-fixed paraffin-embedded sections) - Anti-Cytochrome P450 4A/CYP4A11 antibody (ab3573)

ab3573 labelling Cytochrome P450 4A/CYP4A11 in the cytoplasm and membrane of Human liver tissue (right) compared with a negative control in the absence of primary antibody (left). To expose target proteins, antigen retrieval method was performed using 10mM sodium citrate (pH 6.0) microwaved for 8-15 min. Tissues were blocked in 3% H₂O₂-methanol for 15 min at room temperature. Tissue sections were incubated with the primary antibody (1:200 in 3% BSA-PBS) overnight at 4°C. A HRP-conjugated anti-rabbit was used as the secondary antibody, followed by colorimetric detection using a DAB kit. Tissues were counterstained with hematoxylin and dehydrated with ethanol and xylene to prep for mounting.

Please note: All products are "FOR RESEARCH USE ONLY. NOT FOR USE IN DIAGNOSTIC PROCEDURES"

Our Abpromise to you: Quality guaranteed and expert technical support

- Replacement or refund for products not performing as stated on the datasheet
- Valid for 12 months from date of delivery
- Response to your inquiry within 24 hours
- We provide support in Chinese, English, French, German, Japanese and Spanish
- Extensive multi-media technical resources to help you
- We investigate all quality concerns to ensure our products perform to the highest standards

If the product does not perform as described on this datasheet, we will offer a refund or replacement. For full details of the Abpromise, please visit <https://www.abcam.co.jp/abpromise> or contact our technical team.

Terms and conditions

- Guarantee only valid for products bought direct from Abcam or one of our authorized distributors