

# Anti-Cytochrome P450 2E1 antibody ab28146

★★★★★ [6 Abreviews](#) [138 References](#) [画像数 3](#)

### 製品の概要

製品名	Anti-Cytochrome P450 2E1 antibody
製品の詳細	Rabbit polyclonal to Cytochrome P450 2E1
由来種	Rabbit
特異性	The antibody detects a ~50-55 kDa protein, corresponding to the apparent molecular mass of cytochrome P450 IIE1 on SDS-PAGE immunoblots.
アプリケーション	<b>適用あり:</b> WB, ICC/IF
種交差性	<b>交差種:</b> Mouse, Rat, Rabbit, Human
免疫原	Full length native protein (purified) (Rat)
特記事項	<p>The antibody has been shown to inhibit microsomal benzene metabolism</p> <p>The Life Science industry has been in the grips of a reproducibility crisis for a number of years. Abcam is leading the way in addressing this with our range of recombinant monoclonal antibodies and knockout edited cell lines for gold-standard validation. Please check that this product meets your needs before purchasing.</p> <p>If you have any questions, special requirements or concerns, please send us an inquiry and/or contact our Support team ahead of purchase. Recommended alternatives for this product can be found below, along with publications, customer reviews and Q&amp;As</p>

### 製品の特性

製品の状態	Liquid
保存方法	Shipped at 4°C. Store at +4°C short term (1-2 weeks). Upon delivery aliquot. Store at -20°C long term. Avoid freeze / thaw cycle.
バッファー	Preservative: 0.09% Sodium azide Constituents: PBS, 50% Glycerol (glycerin, glycerine)
精製度	Protein A purified
一次抗体 備考	The antibody has been shown to inhibit microsomal benzene metabolism
ポリ/モノ	ポリクローナル
アイソタイプ	IgG

## アプリケーション

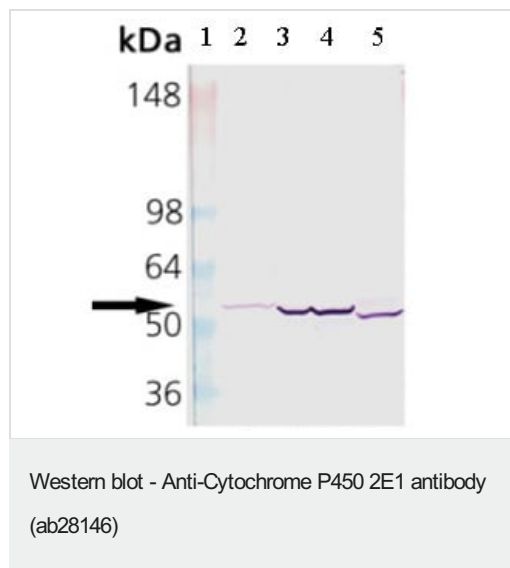
**The Abpromise guarantee** Abpromise保証は、次のテスト済みアプリケーションにおけるab28146の使用に適用されず  
アプリケーションノートには、推奨の開始希釈率がありますが、適切な希釈率につきましてはご確認ください。

アプリケーション	Abreviews	特記事項
WB	★★★★★ (2)	1/5000. Predicted molecular weight: 50-55 kDa. This dilution was sufficient for detection of Cytochrome P450 in 20ug of human liver microsomes by colorimetric immunoblot analysis using Goat anti-Rabbit IgG:AP as the secondary antibody.
ICC/IF		1/1000.

## ターゲット情報

機能	Metabolizes several precarcinogens, drugs, and solvents to reactive metabolites. Inactivates a number of drugs and xenobiotics and also bioactivates many xenobiotic substrates to their hepatotoxic or carcinogenic forms.
配列類似性	Belongs to the cytochrome P450 family.
細胞内局在	Endoplasmic reticulum membrane. Microsome membrane.

## 画像



**All lanes** : Anti-Cytochrome P450 2E1 antibody (ab28146) at 1/1000 dilution

**Lane 1** : Molecular weight marker

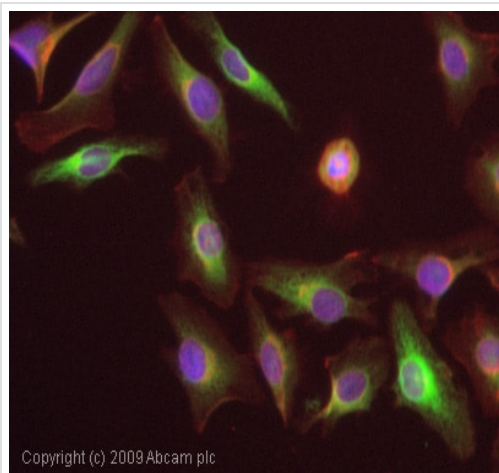
**Lane 2** : Cell lysates prepared from human liver microsomes

**Lane 3** : Cell lysates prepared from rat liver microsomes

**Lane 4** : Cell lysates prepared from mouse liver microsomes

**Lane 5** : Cell lysates prepared from rabbit liver microsomes

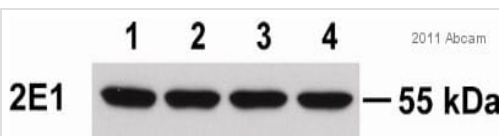
**Predicted band size:** 50-55 kDa



Copyright (c) 2009 Abcam plc

Immunocytochemistry/ Immunofluorescence - Anti-Cytochrome P450 2E1 antibody (ab28146)

ICC/IF image of ab28146 stained HeLa cells. The cells were 4% PFA fixed (10 min) and then incubated in 1%BSA / 10% normal goat serum / 0.3M glycine in 0.1% PBS-Tween for 1h to permeabilise the cells and block non-specific protein-protein interactions. The cells were then incubated with the antibody (ab28146, 1/1000 dilution) overnight at +4°C. The secondary antibody (green) was Alexa Fluor® 488 goat anti-rabbit IgG (H+L) used at a 1/1000 dilution for 1h. Alexa Fluor® 594 WGA was used to label plasma membranes (red) at a 1/200 dilution for 1h. DAPI was used to stain the cell nuclei (blue) at a concentration of 1.43µM.



Western blot - Anti-Cytochrome P450 2E1 antibody (ab28146)

Image courtesy of an anonymous Abreview.

**All lanes :** Anti-Cytochrome P450 2E1 antibody (ab28146) at 1/2500 dilution

**All lanes :** Tissue lysate prepared from normal murine liver

Lysates/proteins at 10 µg per lane.

**Secondary**

**All lanes :** Goat anti-rabbit IgG-HRP at 1/5000 dilution

Developed using the ECL technique.

**Predicted band size:** 50-55 kDa

**Observed band size:** 55 kDa

**Exposure time:** 3 seconds

**Please note:** All products are "FOR RESEARCH USE ONLY. NOT FOR USE IN DIAGNOSTIC PROCEDURES"

**Our Abpromise to you: Quality guaranteed and expert technical support**

- Replacement or refund for products not performing as stated on the datasheet
- Valid for 12 months from date of delivery
- Response to your inquiry within 24 hours
  
- We provide support in Chinese, English, French, German, Japanese and Spanish
- Extensive multi-media technical resources to help you
- We investigate all quality concerns to ensure our products perform to the highest standards

If the product does not perform as described on this datasheet, we will offer a refund or replacement. For full details of the Abpromise, please visit <https://www.abcam.co.jp/abpromise> or contact our technical team.

### **Terms and conditions**

---

- Guarantee only valid for products bought direct from Abcam or one of our authorized distributors