

### Anti-Cytochrome C antibody [37BA11] ab110325

★★★★★ **4 Abreviews**   **123 References**   画像数 5

#### 製品の概要

製品名	Anti-Cytochrome C antibody [37BA11]
製品の詳細	Mouse monoclonal [37BA11] to Cytochrome C
由来種	Mouse
アプリケーション	<b>適用あり:</b> WB, ICC/IF, Flow Cyt
種交差性	<b>交差種:</b> Mouse, Rat, Cow, Human, Caenorhabditis elegans
免疫原	Bovine heart Cytochrome C
ポジティブ・コントロール	Isolated mitochondria from Human, Bovine, Rat and Mouse heart; Human fibroblasts; HeLa cells.
特記事項	<p>This antibody clone is manufactured by Abcam. If you require a custom buffer formulation or conjugation for your experiments, please contact <a href="mailto:orders@abcam.com">orders@abcam.com</a>.</p> <p>The Life Science industry has been in the grips of a reproducibility crisis for a number of years. Abcam is leading the way in addressing this with our range of recombinant monoclonal antibodies and knockout edited cell lines for gold-standard validation. Please check that this product meets your needs before purchasing.</p> <p>If you have any questions, special requirements or concerns, please send us an inquiry and/or contact our Support team ahead of purchase. Recommended alternatives for this product can be found below, along with publications, customer reviews and Q&amp;As</p>

#### 製品の特性

製品の状態	Liquid
保存方法	Shipped at 4°C. Upon delivery aliquot. Store at -20°C.
バッファー	<p>pH: 7.4</p> <p>Preservative: 0.02% Sodium azide</p> <p>Constituent: HEPES buffered saline</p>
精製度	IgG fraction
特記事項(精製)	ab110325 was produced in vitro using hybridomas grown in serum-free medium, and then purified by biochemical fractionation.
ポリ/モノ	モノクローナル
クローン名	37BA11
アイソタイプ	IgG2a

## アプリケーション

**The Abpromise guarantee** Abpromise保証は、次のテスト済みアプリケーションにおけるab110325の使用に適用されます  
アプリケーションノートには、推奨の開始希釈率がありますが、適切な希釈率につきましてはご検討ください。

アプリケーション	Abreviews	特記事項
WB	★★★★★ (3)	Use a concentration of 0.25 - 1 µg/ml. Predicted molecular weight: 12 kDa.
ICC/IF	★★★★★ (1)	Use a concentration of 0.5 - 2 µg/ml. Heat induced antigen retrieval in 0.1 M Tris-HCl, 5% urea, pH 9.5 for 5 min at 95°C improves signal.
Flow Cyt		Use a concentration of 1 µg/ml. <b>ab170191</b> - Mouse monoclonal IgG2a, is suitable for use as an isotype control with this antibody.

## ターゲット情報

## 機能

Electron carrier protein. The oxidized form of the cytochrome c heme group can accept an electron from the heme group of the cytochrome c1 subunit of cytochrome reductase. Cytochrome c then transfers this electron to the cytochrome oxidase complex, the final protein carrier in the mitochondrial electron-transport chain.

Plays a role in apoptosis. Suppression of the anti-apoptotic members or activation of the pro-apoptotic members of the Bcl-2 family leads to altered mitochondrial membrane permeability resulting in release of cytochrome c into the cytosol. Binding of cytochrome c to Apaf-1 triggers the activation of caspase-9, which then accelerates apoptosis by activating other caspases.

## 関連疾患

Defects in CYCS are the cause of thrombocytopenia type 4 (THC4) [MIM:612004]; also known as autosomal dominant thrombocytopenia type 4. Thrombocytopenia is the presence of relatively few platelets in blood. THC4 is a non-syndromic form of thrombocytopenia. Clinical manifestations of thrombocytopenia are absent or mild. THC4 may be caused by dysregulated platelet formation.

## 配列類似性

Belongs to the cytochrome c family.

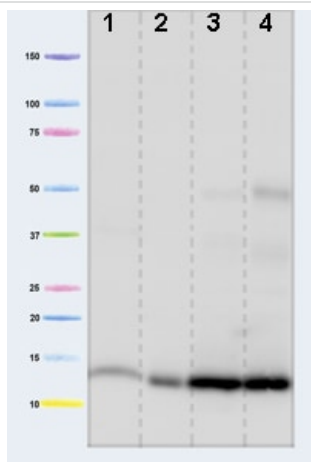
## 翻訳後修飾

Binds 1 heme group per subunit.

## 細胞内局在

Mitochondrion matrix.

## 画像



Western blot - Anti-Cytochrome C antibody  
[37BA11] (ab110325)

**All lanes :** Anti-Cytochrome C antibody [37BA11] (ab110325) at 1  $\mu\text{g/ml}$

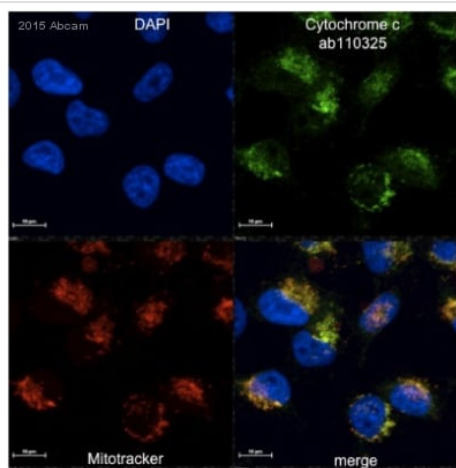
**Lane 1 :** Isolated mitochondria from Human heart at 5  $\mu\text{g}$

**Lane 2 :** Isolated mitochondria from Bovine heart at 1  $\mu\text{g}$

**Lane 3 :** Isolated mitochondria from Rat heart at 10  $\mu\text{g}$

**Lane 4 :** Isolated mitochondria from Mouse heart at 10  $\mu\text{g}$

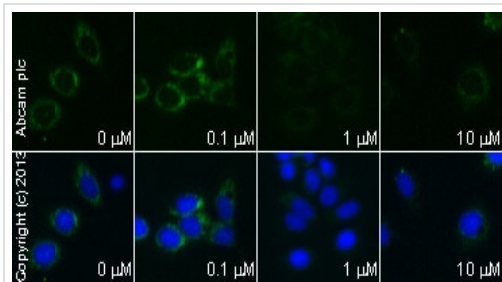
**Predicted band size:** 12 kDa



Immunocytochemistry/ Immunofluorescence - Anti-  
Cytochrome C antibody [37BA11] (ab110325)

This image is courtesy of an anonymous Abreview

ab110325 staining Cytochrome C in MDA MB 231 cells by ICC/IF (Immunocytochemistry/immunofluorescence). Cells were fixed with formaldehyde, permeabilized with 1% Triton X-100 and blocked with 10% BSA for 1 hour at 21°C. Samples were incubated with primary antibody (1/100) for 1 hour. An undiluted DyLight® 550-conjugated goat anti-mouse IgG polyclonal was used as the secondary antibody.

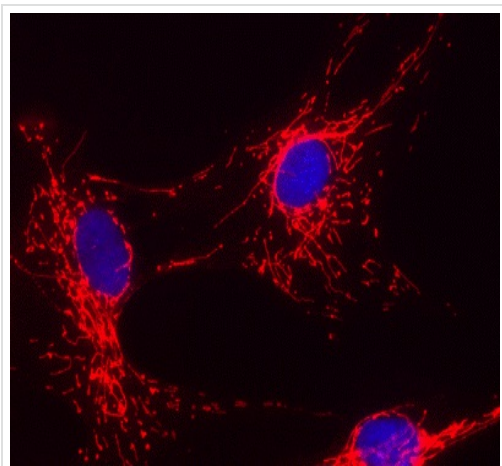


Immunocytochemistry/ Immunofluorescence - Anti-Cytochrome C antibody [37BA11] (ab110325)

**ab110325** staining cytochrome C in MCF7 cells treated with 15-Deoxy-delta12,14-prostaglandin J2 (**ab141717**), by ICC/IF.

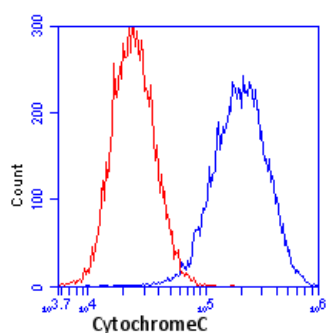
Expression of cytochrome C changes from mitochondrial puncta to a diffuse staining pattern with increased concentration of 15-Deoxy-delta12,14-prostaglandin J2, as described in literature.

The cells were incubated at 37°C for 24 hours in media containing different concentrations of **ab141717** (15-Deoxy-delta12,14-prostaglandin J2) in DMSO, fixed with 100% methanol for 5 minutes at -20°C and blocked with PBS containing 10% goat serum, 0.3 M glycine, 1% BSA and 0.1% tween for 2h at room temperature. Staining of the treated cells with **ab110325** (10 μg/ml) was performed overnight at 4°C in PBS containing 1% BSA and 0.1% tween. A DyLight 488 anti-mouse polyclonal antibody (**ab96879**) at 1/250 dilution was used as the secondary antibody. Nuclei (blue) were counterstained with DAPI and membrane is stained using WGA (red).



Immunocytochemistry/ Immunofluorescence - Anti-Cytochrome C antibody [37BA11] (ab110325)

Immunocytochemistry analysis using ab110325 at 2μg/ml staining Cytochrome C in Human fibroblasts (fixed and permeabilized), followed by a fluorescent goat-anti-mouse IgG.



Flow Cytometry - Anti-Cytochrome C antibody [37BA11] (ab110325)

Flow cytometric analysis using ab110325 at 1μg/ml staining Cytochrome C in HeLa cells (blue). Isotype control antibody (red).

**Please note:** All products are "FOR RESEARCH USE ONLY. NOT FOR USE IN DIAGNOSTIC PROCEDURES"

### **Our Abpromise to you: Quality guaranteed and expert technical support**

---

- Replacement or refund for products not performing as stated on the datasheet
- Valid for 12 months from date of delivery
- Response to your inquiry within 24 hours
- We provide support in Chinese, English, French, German, Japanese and Spanish
- Extensive multi-media technical resources to help you
- We investigate all quality concerns to ensure our products perform to the highest standards

If the product does not perform as described on this datasheet, we will offer a refund or replacement. For full details of the Abpromise, please visit <https://www.abcam.co.jp/abpromise> or contact our technical team.

### **Terms and conditions**

---

- Guarantee only valid for products bought direct from Abcam or one of our authorized distributors