




### Anti-Cystatin-B antibody ab236646

画像数 6

#### 製品の概要

製品名	Anti-Cystatin-B antibody
製品の詳細	Rabbit polyclonal to Cystatin-B
由来種	Rabbit
アプリケーション	<b>適用あり:</b> ICC/IF, IP, IHC-P, WB
種交差性	<b>交差種:</b> Human <b>交差が予測される動物種:</b> Chimpanzee, Gorilla 
免疫原	Recombinant full length protein corresponding to Human Cystatin-B aa 1 to the C-terminus. Database link: <a href="#">P04080</a> <div>  <a href="#">Run BLAST with</a>  <a href="#">Run BLAST with</a> </div>
ポジティブ・コントロール	WB: EC109, HEK-293T, HepG2, MCF7, A549, U-87 MG and HEK-293T whole cell lysates. IHC-P: Human colon cancer and lung cancer tissues. ICC/IF: HepG2 cells. IP: HepG2 whole cell lysate.
特記事項	<p>The Life Science industry has been in the grips of a reproducibility crisis for a number of years. Abcam is leading the way in addressing this with our range of recombinant monoclonal antibodies and knockout edited cell lines for gold-standard validation. Please check that this product meets your needs before purchasing.</p> <p>If you have any questions, special requirements or concerns, please send us an inquiry and/or contact our Support team ahead of purchase. Recommended alternatives for this product can be found below, along with publications, customer reviews and Q&amp;As</p>

#### 製品の特性

製品の状態	Liquid
保存方法	Shipped at 4°C. Store at +4°C short term (1-2 weeks). Upon delivery aliquot. Store at -20°C long term. Avoid freeze / thaw cycle.
バッファー	pH: 7.40 Preservative: 0.03% Proclin 300 Constituents: 50% Glycerol (glycerin, glycerine), PBS
精製度	Protein G purified
特記事項(精製)	Purity >95%.
ポリ/モノ	ポリクローナル
アイソタイプ	IgG

## アプリケーション

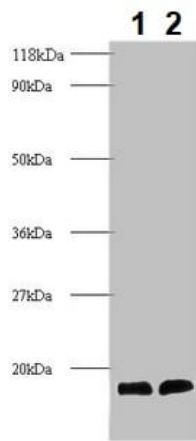
The Abpromise guarantee      Abpromise保証は、 次のテスト済みアプリケーションにおけるab236646の使用に適用されます  
アプリケーションノートには、推奨の開始希釈率がありますが、適切な希釈率につきましてはご検討ください。

アプリケーション	Abreviews	特記事項
ICC/IF		1/50 - 1/200.
IP		1/200 - 1/2000.
IHC-P		1/20 - 1/200.
WB		1/1000 - 1/5000. Predicted molecular weight: 11 kDa.

## ターゲット情報

機能	This is an intracellular thiol proteinase inhibitor. Tightly binding reversible inhibitor of cathepsins L, H and B.
関連疾患	Defects in CSTB are the cause of progressive myoclonic epilepsy type 1 (EPM1) [MIM:254800]. EPM1 is an autosomal recessive disorder characterized by severe, stimulus-sensitive myoclonus and tonic-clonic seizures. The onset, occurring between 6 and 13 years of age, is characterized by convulsions. Myoclonus begins 1 to 5 years later. The twitchings occur predominantly in the proximal muscles of the extremities and are bilaterally symmetrical, although asynchronous. At first small, they become late in the clinical course so violent that the victim is thrown to the floor. Mental deterioration and eventually dementia develop.
配列類似性	Belongs to the cystatin family.
細胞内局在	Cytoplasm. Nucleus.

## 画像



Western blot - Anti-Cystatin-B antibody (ab236646)

**All lanes :** Anti-Cystatin-B antibody (ab236646) at 1/1000 dilution

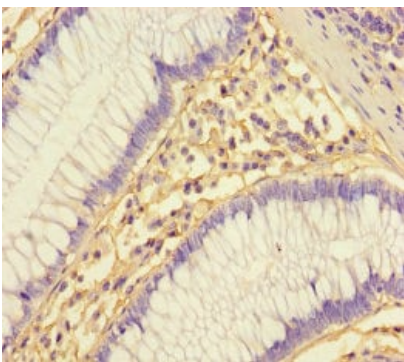
**Lane 1 :** EC109 whole cell lysate

**Lane 2 :** HEK-293T (human epithelial cell line from embryonic kidney transformed with large T antigen) whole cell lysate

### Secondary

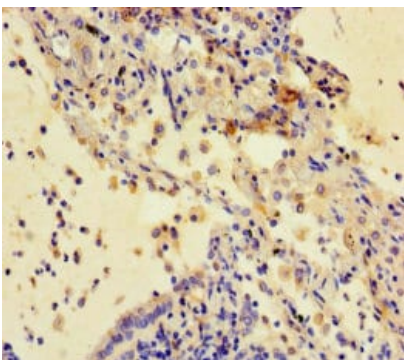
**All lanes :** Goat polyclonal to Rabbit IgG at 1/50000 dilution

**Predicted band size:** 11 kDa



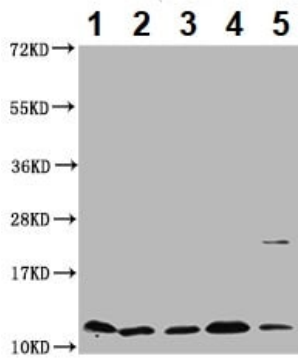
Immunohistochemistry (Formalin/PFA-fixed paraffin-embedded sections) - Anti-Cystatin-B antibody (ab236646)

Paraffin-embedded human colon cancer tissue stained for Cystatin-B using ab236646 at 1/100 dilution in immunohistochemical analysis.



Immunohistochemistry (Formalin/PFA-fixed paraffin-embedded sections) - Anti-Cystatin-B antibody (ab236646)

Paraffin-embedded human lung cancer tissue stained for Cystatin-B using ab236646 at 1/100 dilution in immunohistochemical analysis.



Western blot - Anti-Cystatin-B antibody (ab236646)

**All lanes :** Anti-Cystatin-B antibody (ab236646) at 1/1000 dilution

**Lane 1 :** HepG2 (human liver hepatocellular carcinoma cell line) whole cell lysate

**Lane 2 :** MCF7 (human breast adenocarcinoma cell line) whole cell lysate

**Lane 3 :** A549 (human lung carcinoma cell line) whole cell lysate

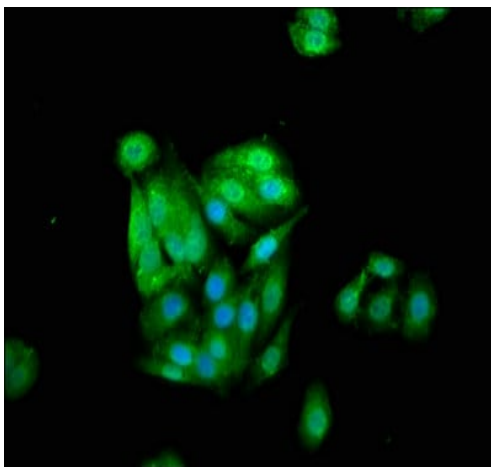
**Lane 4 :** U-87 MG (human glioblastoma-astrocytoma epithelial cell line) whole cell lysate

**Lane 5 :** HEK-293T (human epithelial cell line from embryonic kidney transformed with large T antigen) whole cell lysate

### Secondary

**All lanes :** Goat polyclonal to rabbit IgG at 1/50000 dilution

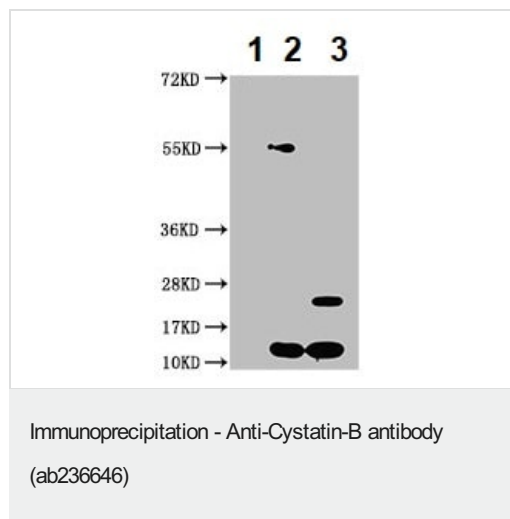
**Predicted band size:** 11 kDa



Immunocytochemistry/ Immunofluorescence - Anti-Cystatin-B antibody (ab236646)

4% formaldehyde-fixed, 0.2% Triton X-100

permeabilized HepG2 (human liver hepatocellular carcinoma cell line) cells stained for Cystatin-B (green) using ab236646 at 1/133 dilution in ICC/IF, followed by Alexa Fluor 488<sup>®</sup> conjugated Goat Anti-Rabbit IgG (H+L). Counter-stained with DAPI.



Cystatin-B was immunoprecipitated from 500 µg HepG2 (human liver hepatocellular carcinoma cell line) whole cell lysate with ab236646 at 1/200 dilution.

Lane 1: Rabbit control IgG IP in HepG2 whole cell lysate.

Lane 2: ab236646 IP in HepG2 whole cell lysate.

Lane 3: HepG2 whole cell lysate 20 µg (Input).

For western blotting, an HRP-conjugated Protein G antibody was used as the secondary antibody at 1/2000 dilution.

**Please note:** All products are "FOR RESEARCH USE ONLY. NOT FOR USE IN DIAGNOSTIC PROCEDURES"

### Our Abpromise to you: Quality guaranteed and expert technical support

---

- Replacement or refund for products not performing as stated on the datasheet
- Valid for 12 months from date of delivery
- Response to your inquiry within 24 hours
- We provide support in Chinese, English, French, German, Japanese and Spanish
- Extensive multi-media technical resources to help you
- We investigate all quality concerns to ensure our products perform to the highest standards

If the product does not perform as described on this datasheet, we will offer a refund or replacement. For full details of the Abpromise, please visit <https://www.abcam.co.jp/abpromise> or contact our technical team.

### Terms and conditions

---

- Guarantee only valid for products bought direct from Abcam or one of our authorized distributors