

### Anti-CYR61/CCN1 antibody [EPR20681] ab230947

KO 評価済 リコンビナント RabMAb

★★★★★ [1 Abreviews](#) [3 References](#) [画像数 7](#)

#### 製品の概要

製品名	Anti-CYR61/CCN1 antibody [EPR20681]
製品の詳細	Rabbit monoclonal [EPR20681] to CYR61/CCN1
由来種	Rabbit
アプリケーション	<b>適用あり:</b> Flow Cyt (Intra), WB, ICC/IF, IP
種交差性	<b>交差種:</b> Human
免疫原	Recombinant fragment. This information is proprietary to Abcam and/or its suppliers.
ポジティブ・コントロール	WB: HeLa, PC-3, MDA-MB-231 and Saos-2 whole cell lysate. ICC/IF: MDA-MB-231 cells. Flow Cyt (intra): MDA-MB-231 cells. IP: Saos-2 whole cell lysate.
特記事項	<p>This product is a recombinant monoclonal antibody, which offers several advantages including:</p> <ul style="list-style-type: none"> <li>- High batch-to-batch consistency and reproducibility</li> <li>- Improved sensitivity and specificity</li> <li>- Long-term security of supply</li> <li>- Animal-free production</li> </ul> <p>For more information <a href="#">see here</a>.</p> <p>Our RabMAb<sup>®</sup> technology is a patented hybridoma-based technology for making rabbit monoclonal antibodies. For details on our patents, please refer to <a href="#">RabMAb<sup>®</sup> patents</a>.</p>

#### 製品の特性

製品の状態	Liquid
保存方法	Shipped at 4°C. Store at +4°C short term (1-2 weeks). Upon delivery aliquot. Store at -20°C long term. Avoid freeze / thaw cycle.
バッファー	<p>pH: 7.2</p> <p>Preservative: 0.01% Sodium azide</p> <p>Constituents: PBS, 40% Glycerol (glycerin, glycerine), 0.05% BSA</p>
精製度	Protein A purified
ポリ/モノ	モノクローナル
クローン名	EPR20681
アイソタイプ	IgG

## アプリケーション

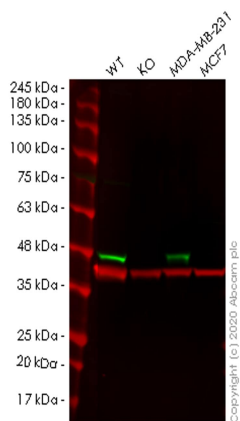
**The Abpromise guarantee** Abpromise保証は、次のテスト済みアプリケーションにおけるab230947の使用に適用されます  
アプリケーションノートには、推奨の開始希釈率がありますが、適切な希釈率につきましてはご検討ください。

アプリケーション	Abreviews	特記事項
Flow Cyt (Intra)		1/60.
WB	★★★★★ (1)	1/1000. Predicted molecular weight: 42 kDa.
ICC/IF		1/500.
IP		1/30.

## ターゲット情報

機能	Promotes cell proliferation, chemotaxis, angiogenesis and cell adhesion. Appears to play a role in wound healing by up-regulating, in skin fibroblasts, the expression of a number of genes involved in angiogenesis, inflammation and matrix remodeling including VEGF-A, VEGF-C, MMP1, MMP3, TIMP1, uPA, PAI-1 and integrins alpha-3 and alpha-5. CYR61-mediated gene regulation is dependent on heparin-binding. Down-regulates the expression of alpha-1 and alpha-2 subunits of collagen type-1. Promotes cell adhesion and adhesive signaling through integrin alpha-6/beta-1, cell migration through integrin alpha-v/beta-5 and cell proliferation through integrin alpha-v/beta-3.
配列類似性	Belongs to the CCN family. Contains 1 CTCK (C-terminal cystine knot-like) domain. Contains 1 IGFBP N-terminal domain. Contains 1 TSP type-1 domain. Contains 1 VWFC domain.
細胞内局在	Secreted.

## 画像



Western blot - Anti-CYR61/CCN1 antibody  
[EPR20681] (ab230947)

**All lanes :** Anti-CYR61/CCN1 antibody [EPR20681] (ab230947) at 1/500 dilution

**Lane 1 :** Wild-type HeLa cell lysate

**Lane 2 :** CYR61 knockout HeLa cell lysate

**Lane 3 :** MDA-MB-231 cell lysate

**Lane 4 :** MCF7 cell lysate

Lysates/proteins at 20 µg per lane.

### Secondary

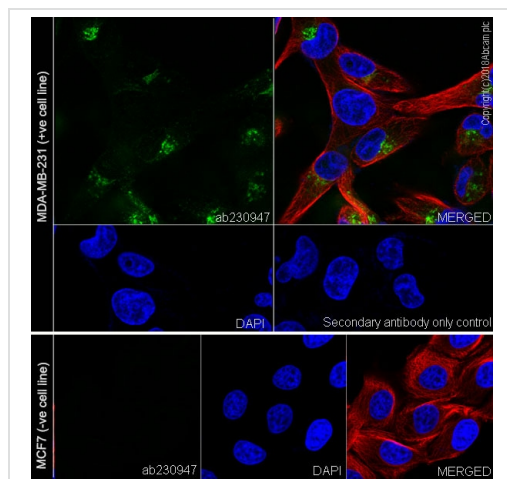
**All lanes :** Goat anti-Rabbit IgG H&L (IRDye® 800CW) preadsorbed ([ab216773](#)) at 1/10000 dilution

**Predicted band size:** 42 kDa

**Observed band size:** 47 kDa

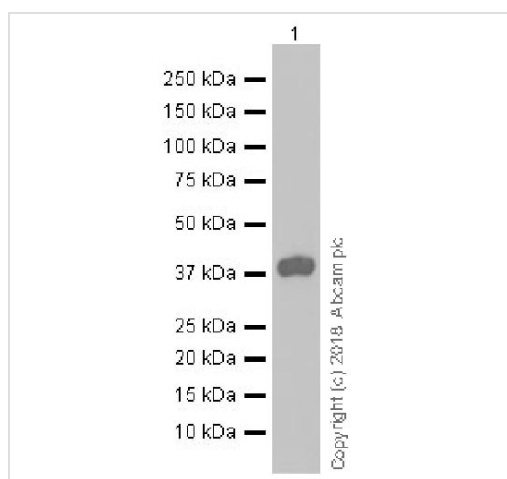
**Lanes 1-4:** Merged signal (red and green). Green - ab230947 observed at 47 kDa. Red - loading control [ab8245](#) observed at 36 kDa.

ab230947 Anti-CYR61/CCN1 antibody [EPR20681] was shown to specifically react with CYR61/CCN1 in wild-type HeLa cells. Loss of signal was observed when knockout cell line [ab265288](#) (knockout cell lysate [ab257406](#)) was used. Wild-type and CYR61/CCN1 knockout samples were subjected to SDS-PAGE. ab230947 and Anti-GAPDH antibody [6C5] - Loading Control ([ab8245](#)) were incubated overnight at 4°C at 1 in 500 dilution and 1 in 20000 dilution respectively. Blots were developed with Goat anti-Rabbit IgG H&L (IRDye® 800CW) preadsorbed ([ab216773](#)) and Goat anti-Mouse IgG H&L (IRDye® 680RD) preadsorbed ([ab216776](#)) secondary antibodies at 1 in 20000 dilution for 1 hour at room temperature before imaging.



Immunocytochemistry/ Immunofluorescence - Anti-CYR61/CCN1 antibody [EPR20681] (ab230947)

Immunofluorescent analysis of 4% paraformaldehyde-fixed, 0.1% Triton X-100 permeabilized MDA-MB-231 (human breast adenocarcinoma epithelial cell) cells labeling CYR61/CCN1 with ab230947 at 1/500 dilution, followed by Goat Anti-Rabbit IgG H&L (Alexa Fluor® 488) ([ab150077](#)) secondary antibody at 1/1000 dilution (green). Confocal image showing cytoplasmic staining in the MDA-MB-231 cell line. **Negative control:** MCF7 (PMID: 11059746). The nuclear counter stain is DAPI (blue). Counterstained with [ab195889](#) Anti-alpha Tubulin antibody [DM1A] - Microtubule Marker (Alexa Fluor® 594) at a 1/200 dilution (red). The negative control is the secondary antibody only.



Western blot - Anti-CYR61/CCN1 antibody [EPR20681] (ab230947)

Anti-CYR61/CCN1 antibody [EPR20681] (ab230947) at 1/5000 dilution + MDA-MB-231 (human breast adenocarcinoma epithelial cell), whole cell lysate at 20 µg

#### Secondary

Goat Anti-Rabbit IgG H&L (HRP) ([ab97051](#)) at 1/100000 dilution

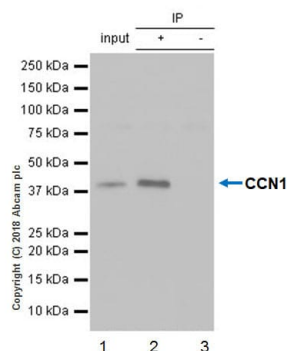
**Predicted band size:** 42 kDa

**Observed band size:** 42 kDa

**Exposure time:** 3 minutes

**Blocking/ Dilution buffer concentration:** 5% NFDM/TBST.

The molecular mass observed is consistent with that of the full-length protein (42 kDa) (PMID: 23798676).



Immunoprecipitation - Anti-CYR61/CCN1 antibody [EPR20681] (ab230947)

CYR61/CCN1 was immunoprecipitated from 0.35 mg Saos-2 (human osteosarcoma epithelial) whole cell lysate with ab230947 at 1/30 dilution. Western blot was performed from the immunoprecipitate using ab230947 at 1/1000 dilution. VeriBlot for IP Detection Reagent (HRP) ([ab131366](#)), was used for detection at 1/1000 dilution.

**Lane 1:** Saos-2 (human osteosarcoma epithelial) whole cell lysate 10 µg (Input).

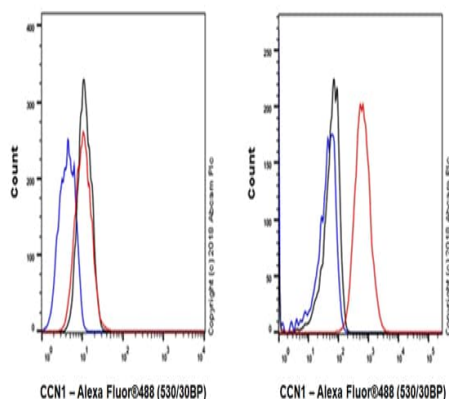
**Lane 2:** ab230947 IP in Saos-2 whole cell lysate (+).

**Lane 3:** Rabbit monoclonal IgG ([ab172730](#)) instead of ab230947 in Saos-2 whole cell lysate (-).

Blocking and dilution buffer and concentration: 5% NFDm/TBST.

Exposure time: 8 seconds.

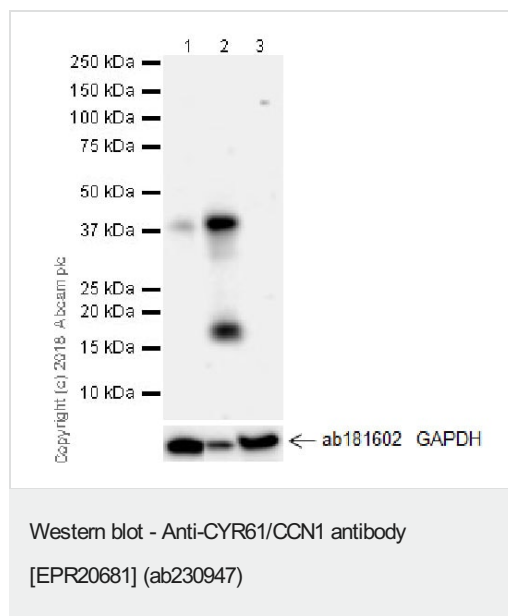
The molecular mass observed is consistent with that of the full-length protein (42 kDa) (PMID: 23798676).



Flow Cytometry (Intracellular) - Anti-CYR61/CCN1 antibody [EPR20681] (ab230947)

Intracellular flow cytometric analysis of 4% paraformaldehyde-fixed, 90% methanol permeabilized MCF7 (human breast adenocarcinoma epithelial cell, Left) / MDA-MB-231 (human breast adenocarcinoma epithelial cell, Right) cell line labeling CYR61/CCN1 with ab230947 at 1/60 (red) compared with a Rabbit monoclonal IgG ([ab172730](#)) (black) and an unlabeled control (cells without incubation with primary antibody and secondary antibody) (blue). Goat anti rabbit IgG (Alexa Fluor<sup>®</sup> 488, [ab150077](#)), at 1/2000 dilution was used as the secondary antibody.

**Negative control:** MCF7 (PMID: 11059746).



**All lanes :** Anti-CYR61/CCN1 antibody [EPR20681] (ab230947) at 1/1000 dilution

**Lane 1 :** PC-3 (human prostate adenocarcinoma epithelial cell) whole cell lysate

**Lane 2 :** Saos-2 (human osteosarcoma epithelial) whole cell lysate

**Lane 3 :** MCF7 (human breast adenocarcinoma epithelial cell) whole cell lysate

Lysates/proteins at 20 µg per lane.

## Secondary

**All lanes :** Goat Anti-Rabbit IgG H&L (HRP) ([ab97051](#)) at 1/100000 dilution

**Predicted band size:** 42 kDa



**Exposure time:** 3 minutes

**Blocking/Dilution buffer concentration:** 5% NFDM/TBST.

The expression profile observed is consistent with the literature, with the 42 kDa band being the full-length protein and the 19 kDa band likely a degradation product (PMID: 23798676; PMID: 16266990; PMID: 8657105).

**Negative control:** MCF7 (PMID 11059746).

Why choose a recombinant antibody?

 <p><b>Research with confidence</b> Consistent and reproducible results</p>	 <p><b>Long-term and scalable supply</b> Recombinant technology</p>
 <p><b>Success from the first experiment</b> Confirmed specificity</p>	 <p><b>Ethical standards compliant</b> Animal-free production</p>

Anti-CYR61/CCN1 antibody [EPR20681] (ab230947)

**Please note:** All products are "FOR RESEARCH USE ONLY. NOT FOR USE IN DIAGNOSTIC PROCEDURES"

### **Our Abpromise to you: Quality guaranteed and expert technical support**

---

- Replacement or refund for products not performing as stated on the datasheet
- Valid for 12 months from date of delivery
- Response to your inquiry within 24 hours
  
- We provide support in Chinese, English, French, German, Japanese and Spanish
- Extensive multi-media technical resources to help you
- We investigate all quality concerns to ensure our products perform to the highest standards

If the product does not perform as described on this datasheet, we will offer a refund or replacement. For full details of the Abpromise, please visit <https://www.abcam.co.jp/abpromise> or contact our technical team.

### **Terms and conditions**

---

- Guarantee only valid for products bought direct from Abcam or one of our authorized distributors