


# Anti-CYP26A1 antibody ab151968

**4 References** [画像数 3](#)

### 製品の概要

製品名	Anti-CYP26A1 antibody
製品の詳細	Rabbit polyclonal to CYP26A1
由来種	Rabbit
アプリケーション	<b>適用あり:</b> WB, IHC-P
種交差性	<b>交差種:</b> Mouse, Human <b>交差が予測される動物種:</b> Rat, Cow, Monkey 
免疫原	Recombinant fragment, corresponding to a region within amino acids 246-497 of Human CYP26A1 (O43174).
ポジティブ・コントロール	293T whole cell lysate; Human hepatoma and Mouse muscle tissues.
特記事項	<p>The Life Science industry has been in the grips of a reproducibility crisis for a number of years. Abcam is leading the way in addressing this with our range of recombinant monoclonal antibodies and knockout edited cell lines for gold-standard validation. Please check that this product meets your needs before purchasing.</p> <p>If you have any questions, special requirements or concerns, please send us an inquiry and/or contact our Support team ahead of purchase. Recommended alternatives for this product can be found below, along with publications, customer reviews and Q&amp;As</p>

### 製品の特性

製品の状態	Liquid
保存方法	Shipped at 4°C. Upon delivery aliquot. Store at -20°C or -80°C. Avoid freeze / thaw cycle.
バッファー	pH: 7.00 Preservative: 0.025% Proclin 300 Constituents: 79% PBS, 20% Glycerol (glycerin, glycerine)
精製度	Immunogen affinity purified
ポリ/モノ	ポリクローナル
アイソタイプ	IgG

### アプリケーション

## The Abpromise guarantee

Abpromise保証は、次のテスト済みアプリケーションにおけるab151968の使用に適用されます

アプリケーションノートには、推奨の開始希釈率がありますが、適切な希釈率につきましてはご確認ください。

アプリケーション	Abreviews	特記事項
WB		1/500 - 1/3000. Predicted molecular weight: 56 kDa.
IHC-P		1/100 - 1/1000. Perform heat mediated antigen retrieval with citrate buffer pH 6 before commencing with IHC staining protocol.

## ターゲット情報

### 機能

Plays a key role in retinoic acid metabolism. Acts on retinoids, including all-trans-retinoic acid (RA) and its stereoisomer 9-cis-RA. Capable of both 4-hydroxylation and 18-hydroxylation. Responsible for generation of several hydroxylated forms of RA, including 4-OH-RA, 4-oxo-RA and 18-OH-RA.

### 組織特異性

Highest levels in adult liver, heart, pituitary gland, adrenal gland, placenta and regions of the brain.

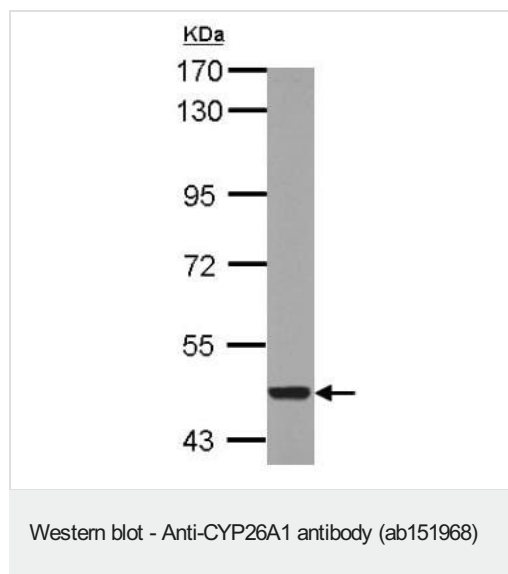
### 配列類似性

Belongs to the cytochrome P450 family.

### 細胞内局在

Endoplasmic reticulum membrane. Microsome membrane.

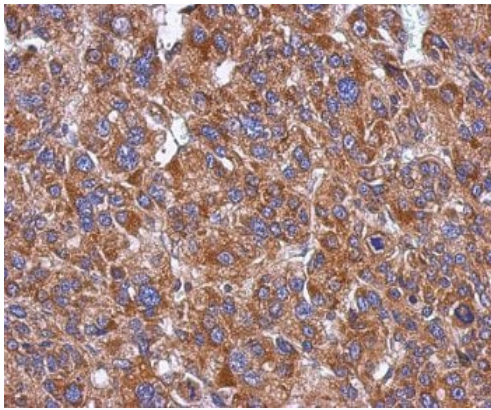
## 画像



Anti-CYP26A1 antibody (ab151968) at 1/1000 dilution + 293T whole cell lysate at 30 µg

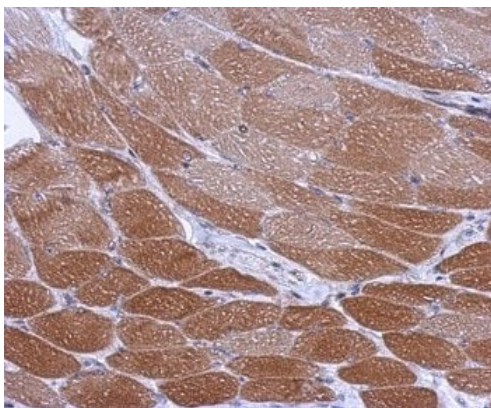
**Predicted band size:** 56 kDa

7.5% SDS PAGE



Immunohistochemical analysis of paraffin-embedded Human hepatoma tissue labeling CYP26A1 with ab151968 at 1/500 dilution.

Immunohistochemistry (Formalin/PFA-fixed paraffin-embedded sections) - Anti-CYP26A1 antibody (ab151968)



Immunohistochemical analysis of paraffin-embedded Mouse muscle tissue labeling CYP26A1 with ab151968 at 1/500 dilution.

Immunohistochemistry (Formalin/PFA-fixed paraffin-embedded sections) - Anti-CYP26A1 antibody (ab151968)

**Please note:** All products are "FOR RESEARCH USE ONLY. NOT FOR USE IN DIAGNOSTIC PROCEDURES"

### Our Abpromise to you: Quality guaranteed and expert technical support

- Replacement or refund for products not performing as stated on the datasheet
- Valid for 12 months from date of delivery

- Response to your inquiry within 24 hours
- We provide support in Chinese, English, French, German, Japanese and Spanish
- Extensive multi-media technical resources to help you
- We investigate all quality concerns to ensure our products perform to the highest standards

If the product does not perform as described on this datasheet, we will offer a refund or replacement. For full details of the Abpromise, please visit <https://www.abcam.co.jp/abpromise> or contact our technical team.

#### **Terms and conditions**

---

- Guarantee only valid for products bought direct from Abcam or one of our authorized distributors