

Anti-Cyclophilin A antibody [1F4-1B5] ab58144

★★★★★ [2 Abreviews](#) [21 References](#) [画像数 4](#)

製品の概要

製品名	Anti-Cyclophilin A antibody [1F4-1B5]
製品の詳細	Mouse monoclonal [1F4-1B5] to Cyclophilin A
由来種	Mouse
アプリケーション	適用あり: WB, ICC/IF, IP, Flow Cyt
種交差性	交差種: Human
免疫原	Recombinant full length protein corresponding to Human Cyclophilin A aa 1-165.
特記事項	<p>This product was changed from ascites to tissue culture supernatant on 22/03/2019. Please note that the dilutions may need to be adjusted accordingly. If you have any questions, please do not hesitate to contact our scientific support team.</p> <p>The Life Science industry has been in the grips of a reproducibility crisis for a number of years. Abcam is leading the way in addressing this with our range of recombinant monoclonal antibodies and knockout edited cell lines for gold-standard validation. Please check that this product meets your needs before purchasing.</p> <p>If you have any questions, special requirements or concerns, please send us an inquiry and/or contact our Support team ahead of purchase. Recommended alternatives for this product can be found below, along with publications, customer reviews and Q&As</p>

製品の特性

製品の状態	Liquid
保存方法	Shipped at 4°C. Upon delivery aliquot and store at -20°C or -80°C. Avoid repeated freeze / thaw cycles.
バッファー	pH: 7.40 Constituent: 100% PBS
精製度	Protein A purified
ポリ/モノ	モノクローナル
クローン名	1F4-1B5
アイソタイプ	IgG2a
軽鎖の種類	kappa

アプリケーション

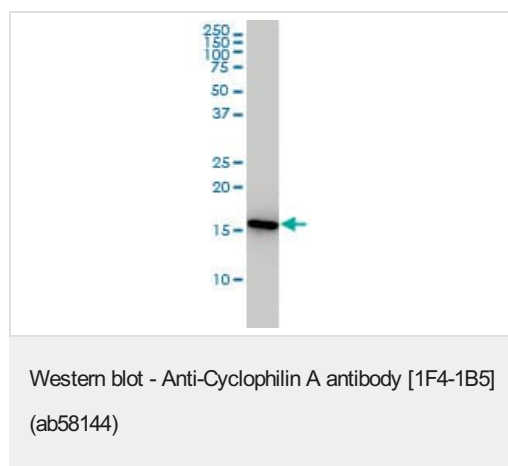
The Abpromise guarantee Abpromise保証は、 次のテスト済みアプリケーションにおけるab58144の使用に適用されます
アプリケーションノートには、推奨の開始希釈率がありますが、適切な希釈率につきましてはご確認ください。

アプリケーション	Abreviews	特記事項
WB	★★★★☆ (1)	Use at an assay dependent concentration. Predicted molecular weight: 18 kDa.
ICC/IF		Use at an assay dependent concentration.
IP		Use at an assay dependent concentration.
Flow Cyt		Use at an assay dependent concentration. ab170191 - Mouse monoclonal IgG2a, is suitable for use as an isotype control with this antibody.

ターゲット情報

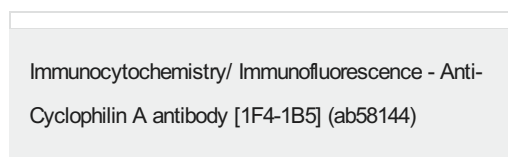
機能	PPases accelerate the folding of proteins. It catalyzes the cis-trans isomerization of proline imidic peptide bonds in oligopeptides.
配列類似性	Belongs to the cyclophilin-type PPase family. PPase A subfamily. Contains 1 PPase cyclophilin-type domain.
細胞内局在	Cytoplasm.

画像



Cyclophilin A antibody (ab58144) at 1ug/lane + Jurkat cell lysate at 25ug/lane.

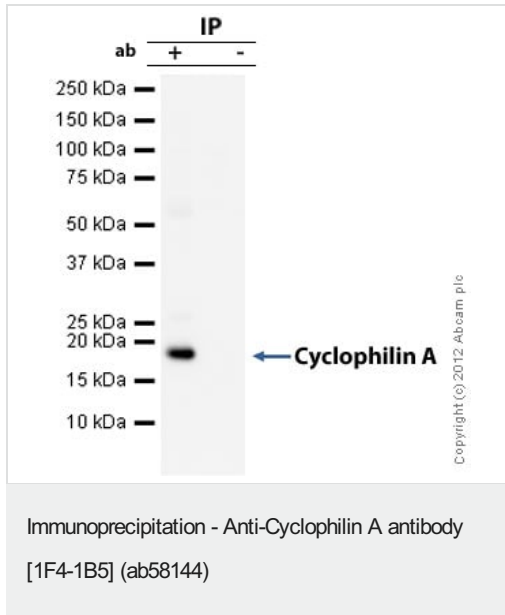
This image was generated using the ascites version of the product.



ICC/IF image of ab58144 stained HeLa cells. The cells were 4% formaldehyde fixed (10 min) and then incubated in 1%BSA / 10% normal goat serum / 0.3M glycine in 0.1% PBS-Tween for 1h to permeabilise the cells and block non-specific protein-protein interactions. The cells were then incubated with the antibody (ab58144, 1µg/ml) overnight at +4°C. The secondary antibody

(green) was Alexa Fluor® 488 goat anti-mouse IgG (H+L) used at a 1/1000 dilution for 1h. Alexa Fluor® 594 WGA was used to label plasma membranes (red) at a 1/200 dilution for 1h. DAPI was used to stain the cell nuclei (blue) at a concentration of 1.43µM.

This image was generated using the ascites version of the product.



Cyclophilin A was immunoprecipitated using 0.5mg HeLa whole cell extract, 10µg of Mouse monoclonal to Cyclophilin A and 50µl of protein G magnetic beads (+). No antibody was added to the control (-).

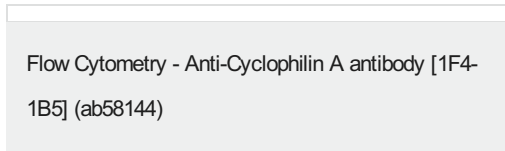
The antibody was incubated under agitation with Protein G beads for 10min, HeLa whole cell extract lysate diluted in RIPA buffer was added to each sample and incubated for a further 10min under agitation.

Proteins were eluted by addition of 40µl SDS loading buffer and incubated for 10min at 70°C; 10µl of each sample was separated on a SDS PAGE gel, transferred to a nitrocellulose membrane, blocked with 5% BSA and probed with ab58144.

Secondary: Protein G-HRP at 1/500 dilution.

Band: 18kDa: Cyclophilin A.

This image was generated using the ascites version of the product.



Overlay histogram showing HeLa cells stained with ab58144 (red line). The cells were fixed with 4% paraformaldehyde and then permeabilized with 0.1% PBS-Tween for 20 min. The cells were then incubated in 1x PBS / 10% normal goat serum / 0.3M glycine to block non-specific protein-protein interactions followed by the antibody (ab58144, 0.5µg/1x10⁶ cells) for 30 min at 22°C. The secondary antibody used was DyLight® 488 goat anti-mouse IgG (H+L) (**ab96879**) at 1/500 dilution for 30 min at 22°C. Isotype control antibody (black line) was mouse IgG2a [ICIGG2A] (**ab91361**, 1µg/1x10⁶ cells) used under the same conditions. Acquisition of >5,000 events was performed.

This image was generated using the ascites version of the product.

Please note: All products are "FOR RESEARCH USE ONLY. NOT FOR USE IN DIAGNOSTIC PROCEDURES"

Our Promise to you: Quality guaranteed and expert technical support

- Replacement or refund for products not performing as stated on the datasheet
- Valid for 12 months from date of delivery

- Response to your inquiry within 24 hours
- We provide support in Chinese, English, French, German, Japanese and Spanish
- Extensive multi-media technical resources to help you
- We investigate all quality concerns to ensure our products perform to the highest standards

If the product does not perform as described on this datasheet, we will offer a refund or replacement. For full details of the Abpromise, please visit <https://www.abcam.co.jp/abpromise> or contact our technical team.

Terms and conditions

- Guarantee only valid for products bought direct from Abcam or one of our authorized distributors