

Anti-Cyclin E1 antibody [SP146] ab135380

リコンビナント **RabMAb**

★★★★★ **1 Abreviews** **6 References** 画像数 **4**

製品の概要

製品名	Anti-Cyclin E1 antibody [SP146]
製品の詳細	Rabbit monoclonal [SP146] to Cyclin E1
由来種	Rabbit
アプリケーション	適用あり: IHC-P
種交差性	交差種: Human
免疫原	Synthetic peptide within Human Cyclin E1 aa 350 to the C-terminus (C terminal). The exact sequence is proprietary. Database link: P24864
ポジティブ・コントロール	IHC-P: Human colon, and Human placenta tissue.
特記事項	This product is a recombinant monoclonal antibody, which offers several advantages including: <ul style="list-style-type: none"> - High batch-to-batch consistency and reproducibility - Improved sensitivity and specificity - Long-term security of supply - Animal-free production For more information see here . Our RabMAb® technology is a patented hybridoma-based technology for making rabbit monoclonal antibodies. For details on our patents, please refer to RabMAb® patents . This product is FOR RESEARCH USE ONLY. For commercial use, please contact partnerships@abcam.com.

製品の特性

製品の状態	Liquid
保存方法	Shipped at 4°C. Store at +4°C. Do Not Freeze.
バッファー	pH: 7.20 Preservative: 0.1% Sodium azide Constituents: 1% BSA, PBS
精製度	Protein A purified
ポリ/モノ	モノクローナル

クローン名	SP146
アイソタイプ	IgG

アプリケーション

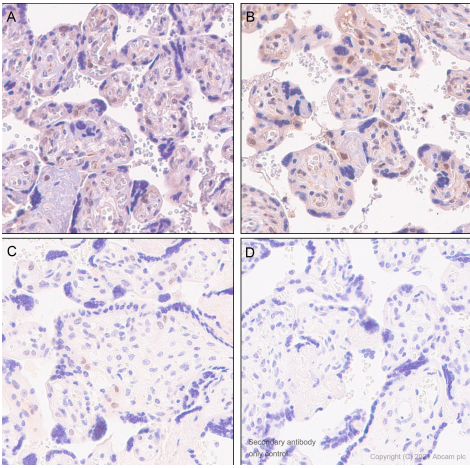
The Abpromise guarantee **Abpromise保証は、** 次のテスト済みアプリケーションにおけるab135380の使用に適用されます
 アプリケーションノートには、推奨の開始希釈率がありますが、適切な希釈率につきましてはご検討ください。

アプリケーション	Abreviews	特記事項
IHC-P		1/50 - 1/100. Perform heat mediated antigen retrieval with citrate buffer pH 6 before commencing with IHC staining protocol. Tissue choice, antigen retrieval and antibody concentration are critical for achieving optimal staining. Please adjust your own IHC staining protocols accordingly, to account for this.

ターゲット情報

機能	Essential for the control of the cell cycle at the G1/S (start) transition.
組織特異性	Highly expressed in testis and placenta. Low levels in bronchial epithelial cells.
配列類似性	Belongs to the cyclin family. Cyclin E subfamily.
翻訳後修飾	Phosphorylation of Thr-395 by GSK3 and of Ser-399 by CDK2 accelerates degradation via the ubiquitin proteasome pathway. Phosphorylated upon DNA damage, probably by ATM or ATR.
細胞内局在	Nucleus.

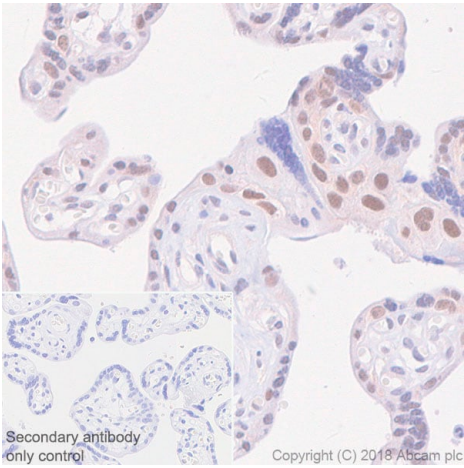
画像



Immunohistochemistry (Formalin/PFA-fixed paraffin-embedded sections) - Anti-Cyclin E1 antibody [SP146] (ab135380)

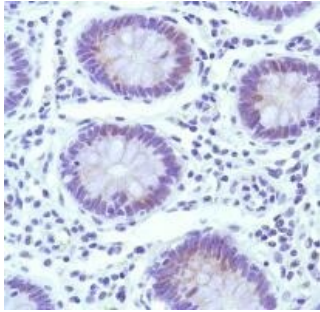
Immunohistochemistry analysis staining paraffin-embedded sections of human placenta tissue with ab135380 in the following dilutions: Image A: 1:100 dilution (2.13 µg/ml), Image B: 1:50 dilution (4.26 µg/ml), Image C: 1:50 dilution (4.26 µg/ml), Image D: Control. A ready to use secondary was used, and the counterstain was Hematoxylin. Image A and Image B: Heat mediated antigen retrieval using [ab93684](#) (Tris/EDTA buffer, pH 9.0) for 15mins by a pressure cooker. Image C: Heat mediated antigen retrieval with Tris-EDTA buffer (pH 9.0, epitope retrieval solution2) for 20 mins.

Positive staining on the human placenta. Image A and Image B: The section was incubated with ab135380 at +4°C overnight. Image C: The section was incubated with ab135380 for 30 mins at room temperature. The immunostaining was performed on a Leica Biosystems BOND® RX



Immunohistochemistry (Formalin/PFA-fixed paraffin-embedded sections) analysis of Human placenta tissue sections labeling Cyclin E1 with ab135380 at 1/100 dilution (2.60 µg/ml). Heat mediated antigen retrieval was performed Heat mediated antigen retrieval using sodium citrate buffer, pH 6.0. Goat Anti-Rabbit IgG H&L (HRP) was used as the secondary antibody. Negative control: PBS instead of the primary antibody. Hematoxylin was used as a counterstain.

Immunohistochemistry (Formalin/PFA-fixed paraffin-embedded sections) - Anti-Cyclin E1 antibody [SP146] (ab135380)



Immunohistochemical analysis of formalin-fixed, paraffin-embedded human colon tissue labeling Cyclin E1 with ab135380 at a 1/100 dilution.

Immunohistochemistry (Formalin/PFA-fixed paraffin-embedded sections) - Anti-Cyclin E1 antibody [SP146] (ab135380)

Why choose a recombinant antibody?



Anti-Cyclin E1 antibody [SP146] (ab135380)

Please note: All products are "FOR RESEARCH USE ONLY. NOT FOR USE IN DIAGNOSTIC PROCEDURES"

Our Abpromise to you: Quality guaranteed and expert technical support

- Replacement or refund for products not performing as stated on the datasheet
- Valid for 12 months from date of delivery
- Response to your inquiry within 24 hours

- We provide support in Chinese, English, French, German, Japanese and Spanish
- Extensive multi-media technical resources to help you
- We investigate all quality concerns to ensure our products perform to the highest standards

If the product does not perform as described on this datasheet, we will offer a refund or replacement. For full details of the Abpromise, please visit <https://www.abcam.co.jp/abpromise> or contact our technical team.

Terms and conditions

- Guarantee only valid for products bought direct from Abcam or one of our authorized distributors