

### Anti-Cyclin B2/CCNB2 antibody [R17985] ab185622

リコンビナント **RabMAb**

**13 References**    画像数 **10**

#### 製品の概要

製品名	Anti-Cyclin B2/CCNB2 antibody [R17985]
製品の詳細	Rabbit monoclonal [R17985] to Cyclin B2/CCNB2
由来種	Rabbit
アプリケーション	<b>適用あり:</b> IP, ICC/IF, WB, IHC-P
種交差性	<b>交差種:</b> Mouse, Rat, Human
免疫原	Recombinant fragment. This information is proprietary to Abcam and/or its suppliers.
ポジティブ・コントロール	WB: SW480, HeLa, A549, C6 and PC-12 whole cell lysates; Mouse and rat testis lysates. IHC-P: Human colon, Human colon cancer and rat testis tissues. ICC/IF: PC-12 and SW480 cells. IP: HeLa whole cell lysate.
特記事項	<p>This product is a recombinant monoclonal antibody, which offers several advantages including:</p> <ul style="list-style-type: none"> <li>- High batch-to-batch consistency and reproducibility</li> <li>- Improved sensitivity and specificity</li> <li>- Long-term security of supply</li> <li>- Animal-free production</li> </ul> <p>For more information <a href="#">see here</a>.</p> <p>Our RabMAb<sup>®</sup> technology is a patented hybridoma-based technology for making rabbit monoclonal antibodies. For details on our patents, please refer to <a href="#">RabMAb<sup>®</sup> patents</a>.</p>

#### 製品の特性

製品の状態	Liquid
保存方法	Shipped at 4°C. Store at +4°C short term (1-2 weeks). Upon delivery aliquot. Store at -20°C long term. Avoid freeze / thaw cycle.
バッファー	<p>pH: 7.2</p> <p>Preservative: 0.01% Sodium azide</p> <p>Constituents: 59% PBS, 40% Glycerol (glycerin, glycerine), 0.05% BSA</p>
精製度	Protein A purified
ポリ/モノ	モノクローナル
クローン名	R17985

アイソタイプ

IgG

## アプリケーション

### The Abpromise guarantee

**Abpromise保証は、**次のテスト済みアプリケーションにおけるab185622の使用に適用されます

アプリケーションノートには、推奨の開始希釈率がありますが、適切な希釈率につきましてはご検討ください。

アプリケーション	Abreviews	特記事項
IP		1/80.
ICC/IF		1/500.
WB		1/1000. Detects a band of approximately 45 kDa (predicted molecular weight: 45 kDa).
IHC-P		1/100. Perform heat mediated antigen retrieval with Tris/EDTA buffer pH 9.0 before commencing with IHC staining protocol. Recommended for human and rat but not mouse.

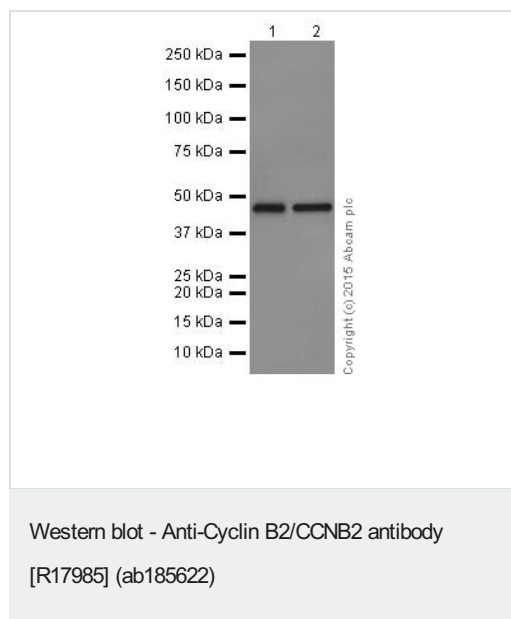
## ターゲット情報

**機能** Essential for the control of the cell cycle at the G2/M (mitosis) transition.

**配列類似性** Belongs to the cyclin family. Cyclin AB subfamily.

**発生段階** Accumulates steadily during G2 and is abruptly destroyed at mitosis.

## 画像



**All lanes :** Anti-Cyclin B2/CCNB2 antibody [R17985] (ab185622) at 1/1000 dilution

**Lane 1 :** SW480 (Human colon adenocarcinoma cell line) whole cell lysate

**Lane 2 :** HeLa (Human epithelial cells from cervix adenocarcinoma) whole cell lysate

Lysates/proteins at 20 µg per lane.

### Secondary

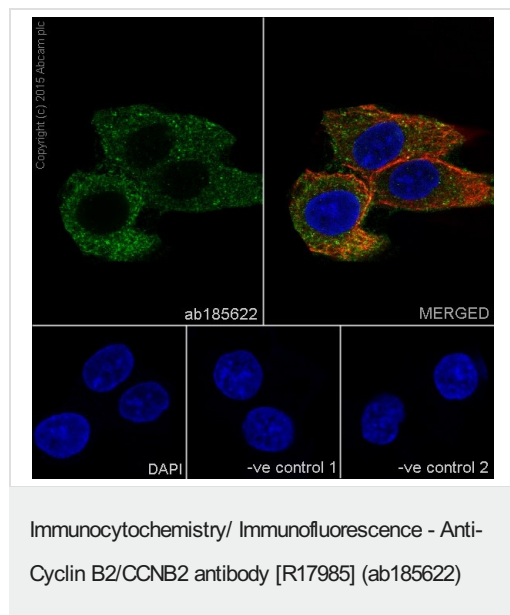
**All lanes :** Anti-Rabbit IgG (HRP), specific to the non-reduced form of IgG at 1/1000 dilution

**Predicted band size:** 45 kDa

**Observed band size:** 45 kDa

**Exposure time:** 3 minutes

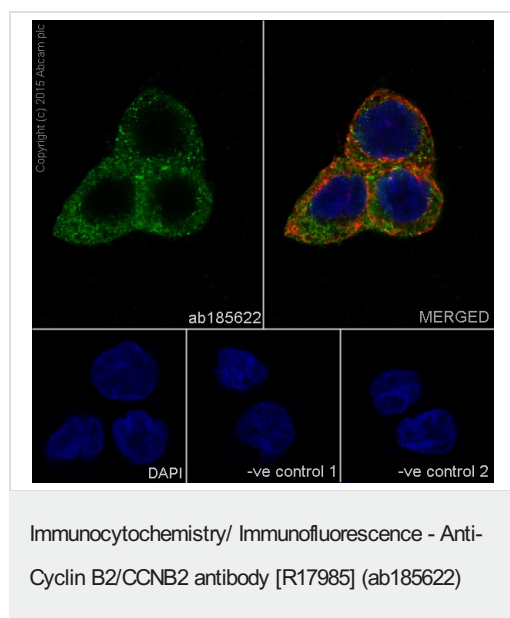
Blocking/Dilution buffer: 5% NFDM/TBST.



Immunofluorescent analysis of 4% paraformaldehyde-fixed, 0.1% Triton X-100 permeabilized PC-12 (Rat adrenal gland pheochromocytoma) cells labeling Cyclin B2/CCNB2 with ab185622 at 1/500 dilution, followed by Goat anti-rabbit IgG (Alexa Fluor® 488) (**ab150077**) secondary antibody at 1/500 dilution (green). Confocal image showing cytoplasmic staining on PC-12 cell line. The nuclear counter stain is DAPI (blue). Tubulin is detected with **ab7291** (anti-Tubulin mouse mAb) at 1/1000 dilution and **ab150120** (AlexaFluor®594 Goat anti-Mouse secondary) at 1/500 dilution (red).

The negative controls are as follows;

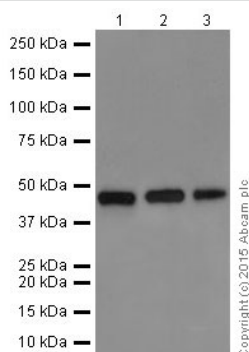
-ve control 1: ab185622 at 1/500 dilution followed by **ab150120** (AlexaFluor®594 Goat anti-Mouse secondary) at 1/500 dilution.  
-ve control 2: **ab7291** (anti-Tubulin mouse mAb) at 1/1000 dilution followed by **ab150077** (Alexa Fluor®488 Goat Anti-Rabbit IgG H&L) at 1/500 dilution.



Immunofluorescent analysis of 4% paraformaldehyde-fixed, 0.1% Triton X-100 permeabilized SW480 (Human colon adenocarcinoma cell line) cells labeling Cyclin B2/CCNB2 with ab185622 at 1/500 dilution, followed by Goat anti-rabbit IgG (Alexa Fluor® 488) (**ab150077**) secondary antibody at 1/500 dilution (green). Confocal image showing cytoplasmic staining on SW480 cell line. The nuclear counter stain is DAPI (blue). Tubulin is detected with **ab7291** (anti-Tubulin mouse mAb) at 1/1000 dilution and **ab150120** (AlexaFluor®594 Goat anti-Mouse secondary) at 1/500 dilution (red).

The negative controls are as follows;

-ve control 1: ab185622 at 1/500 dilution followed by **ab150120** (AlexaFluor®594 Goat anti-Mouse secondary) at 1/500 dilution.  
-ve control 2: **ab7291** (anti-Tubulin mouse mAb) at 1/1000 dilution followed by **ab150077** (Alexa Fluor®488 Goat Anti-Rabbit IgG H&L) at 1/500 dilution.



Western blot - Anti-Cyclin B2/CCNB2 antibody  
[R17985] (ab185622)

**All lanes :** Anti-Cyclin B2/CCNB2 antibody [R17985] (ab185622)  
at 1/5000 dilution

**Lane 1 :** A549 (Human lung carcinoma) whole cell lysate

**Lane 2 :** Mouse testis lysate

**Lane 3 :** Rat testis lysate

Lysates/proteins at 20 µg per lane.

#### Secondary

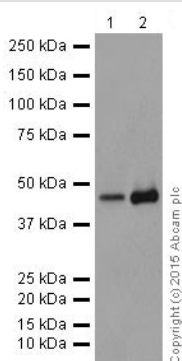
**All lanes :** Goat Anti-Rabbit IgG H&L (HRP) ([ab97051](#)) at 1/1000  
dilution

**Predicted band size:** 45 kDa

**Observed band size:** 45 kDa

**Exposure time:** 3 minutes

Blocking/Dilution buffer: 5% NFDM/TBST.



Western blot - Anti-Cyclin B2/CCNB2 antibody  
[R17985] (ab185622)

**All lanes :** Anti-Cyclin B2/CCNB2 antibody [R17985] (ab185622)  
at 1/1000 dilution

**Lane 1 :** C6 (Rat glial tumor cells) whole cell lysate

**Lane 2 :** PC-12 (Rat adrenal gland pheochromocytoma) whole cell  
lysate

Lysates/proteins at 20 µg per lane.

#### Secondary

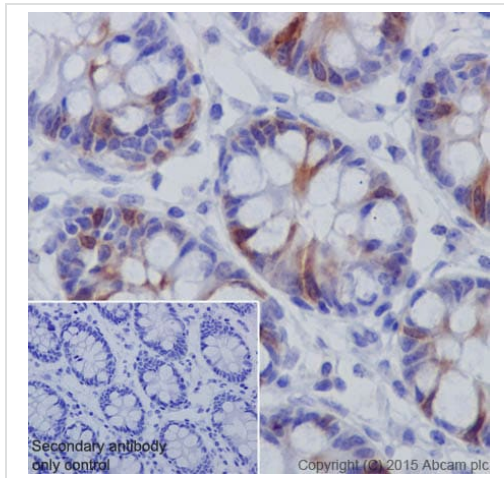
**All lanes :** Goat Anti-Rabbit IgG H&L (HRP) ([ab97051](#)) at 1/1000  
dilution

**Predicted band size:** 45 kDa

**Observed band size:** 45 kDa

**Exposure time:** 30 seconds

Blocking/Dilution buffer: 5% NFDM/TBST.

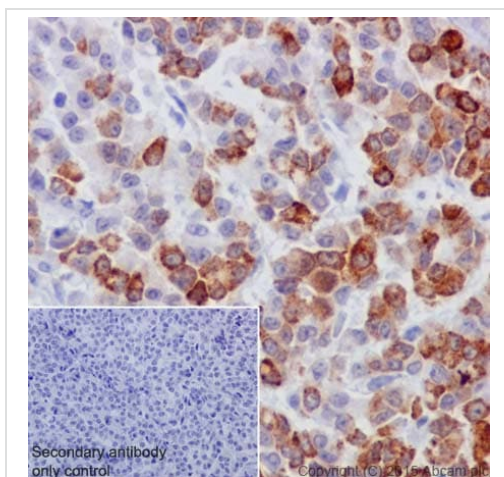


Immunohistochemistry (Formalin/PFA-fixed paraffin-embedded sections) - Anti-Cyclin B2/CCNB2 antibody [R17985] (ab185622)

Immunohistochemical analysis of paraffin-embedded Human colon tissue labeling Cyclin B2/CCNB2 with ab185622 at 1/100 dilution, followed by Goat Anti-Rabbit IgG H&L (HRP) ([ab97051](#)) secondary antibody at 1/500 dilution. Cytoplasmic staining on normal Human colon epithelium is observed. Counter stained with Hematoxylin.

Secondary antibody only control: Used PBS instead of primary antibody, secondary antibody is Goat Anti-Rabbit IgG H&L (HRP) ([ab97051](#)) at 1/500 dilution.

Perform heat mediated antigen retrieval with Tris/EDTA buffer pH 9.0 before commencing with IHC staining protocol.

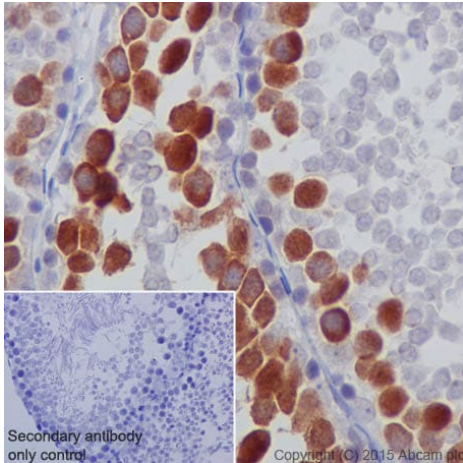


Immunohistochemistry (Formalin/PFA-fixed paraffin-embedded sections) - Anti-Cyclin B2/CCNB2 antibody [R17985] (ab185622)

Immunohistochemical analysis of paraffin-embedded Human colon cancer tissue labeling Cyclin B2/CCNB2 with ab185622 at 1/100 dilution, followed by Goat Anti-Rabbit IgG H&L (HRP) ([ab97051](#)) secondary antibody at 1/500 dilution. Cytoplasmic staining on tumor cells of Human colon epithelium is observed. Counter stained with Hematoxylin.

Secondary antibody only control: Used PBS instead of primary antibody, secondary antibody is Goat Anti-Rabbit IgG H&L (HRP) ([ab97051](#)) at 1/500 dilution.

Perform heat mediated antigen retrieval with Tris/EDTA buffer pH 9.0 before commencing with IHC staining protocol.

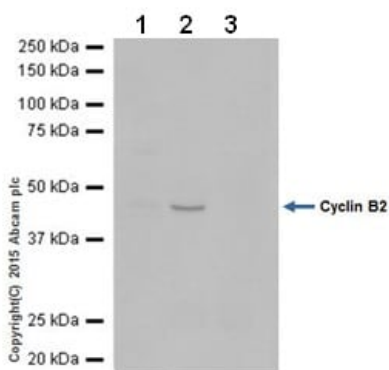


Immunohistochemistry (Formalin/PFA-fixed paraffin-embedded sections) - Anti-Cyclin B2/CCNB2 antibody [R17985] (ab185622)

Immunohistochemical analysis of paraffin-embedded Rat testis tissue labeling Cyclin B2/CCNB2 with ab185622 at 1/100 dilution, followed by Goat Anti-Rabbit IgG H&L (HRP) ([ab97051](#)) secondary antibody at 1/500 dilution. Cytoplasmic staining on spermatocytes of rat testis is observed. Counter stained with Hematoxylin.

Secondary antibody only control: Used PBS instead of primary antibody, secondary antibody is Goat Anti-Rabbit IgG H&L (HRP) ([ab97051](#)) at 1/500 dilution.

Perform heat mediated antigen retrieval with Tris/EDTA buffer pH 9.0 before commencing with IHC staining protocol.



Immunoprecipitation - Anti-Cyclin B2/CCNB2 antibody [R17985] (ab185622)

Cyclin B2/CCNB2 was immunoprecipitated from 1mg of HeLa (Human epithelial cells from cervix adenocarcinoma) whole cell lysate with ab185622 at 1/80 dilution. Western blot was performed from the immunoprecipitate using ab185622 at 1/1000 dilution. Anti-Rabbit IgG (HRP), specific to the non-reduced form of IgG, was used as secondary antibody at 1/1500 dilution.

Lane 1: HeLa whole cell lysate 10 µg (Input).

Lane 2: ab185622 IP in HeLa whole cell lysate.

Lane 3: Rabbit monoclonal IgG ([ab172730](#)) instead of ab185622 in HeLa whole cell lysate.

Blocking and dilution buffer and concentration: 5% NFDm/TBST.

Exposure time:10 seconds

### Why choose a recombinant antibody?



#### Research with confidence

Consistent and reproducible results



#### Long-term and scalable supply

Recombinant technology



#### Success from the first experiment

Confirmed specificity



#### Ethical standards compliant

Animal-free production

Anti-Cyclin B2/CCNB2 antibody [R17985]

(ab185622)

**Please note:** All products are "FOR RESEARCH USE ONLY. NOT FOR USE IN DIAGNOSTIC PROCEDURES"

### Our Abpromise to you: Quality guaranteed and expert technical support

---

- Replacement or refund for products not performing as stated on the datasheet
- Valid for 12 months from date of delivery
- Response to your inquiry within 24 hours
- We provide support in Chinese, English, French, German, Japanese and Spanish
- Extensive multi-media technical resources to help you
- We investigate all quality concerns to ensure our products perform to the highest standards

If the product does not perform as described on this datasheet, we will offer a refund or replacement. For full details of the Abpromise, please visit <https://www.abcam.co.jp/abpromise> or contact our technical team.

### Terms and conditions

---

- Guarantee only valid for products bought direct from Abcam or one of our authorized distributors