


# Anti-Cyclin B1 (phospho S126) antibody ab3488

**1 References** [画像数 1](#)

### 製品の概要

製品名	Anti-Cyclin B1 (phospho S126) antibody
製品の詳細	Rabbit polyclonal to Cyclin B1 (phospho S126)
由来種	Rabbit
特異性	Minimal reactivity is expected with the non-phosphorylated form of the protein.
アプリケーション	<b>適用あり:</b> WB
種交差性	<b>交差種:</b> Human <b>交差が予測される動物種:</b> Mouse, Rat, Hamster, Dog, Chimpanzee 
免疫原	Synthetic peptide corresponding to Human Cyclin B1 aa 120-131 (phospho S126). Sequence: ILVDTAS <sub>p</sub> PSPME Database link: <b>P14635</b>

 [Run BLAST with](#)

 [Run BLAST with](#)

### 特記事項

This antibody recognizes a Ser126 phosphorylation involved in an auto phosphorylation of the cdk-cyclin complex. Recognition of this phosphorylated site suggests the antibody is useful to detect the active form of the complex and may serve as a marker of mitosis.

The Life Science industry has been in the grips of a reproducibility crisis for a number of years. Abcam is leading the way in addressing this with our range of recombinant monoclonal antibodies and knockout edited cell lines for gold-standard validation. Please check that this product meets your needs before purchasing.

If you have any questions, special requirements or concerns, please send us an inquiry and/or contact our Support team ahead of purchase. Recommended alternatives for this product can be found below, along with publications, customer reviews and Q&As

### 製品の特性

製品の状態	Liquid
保存方法	Shipped at 4°C. Upon delivery aliquot and store at -20°C or -80°C. Avoid repeated freeze / thaw cycles.
バッファー	Preservative: 0.01% Sodium azide Constituents: 0.42% Potassium phosphate, 0.87% Sodium chloride
精製度	Immunogen affinity purified

## 一次抗体 備考

This antibody recognizes a Ser126 phosphorylation involved in an auto phosphorylation of the cdk -cyclin complex. Recognition of this phosphorylated site suggests the antibody is useful to detect the active form of the complex and may serve as a marker of mitosis.

## ポリ/モノ

ポリクローナル

## アイソタイプ

IgG

## アプリケーション

### The Abpromise guarantee

**Abpromise保証は、次のテスト済みアプリケーションにおけるab3488の使用に適用されます**

アプリケーションノートには、推奨の開始希釈率がありますが、適切な希釈率につきましてはご検討ください。

アプリケーション	Abreviews	特記事項
WB		1/100 - 1/1000. Detects a band of approximately 48 kDa (predicted molecular weight: 48 kDa).

## ターゲット情報

### 機能

Essential for the control of the cell cycle at the G2/M (mitosis) transition.

### 配列類似性

Belongs to the cyclin family. Cyclin AB subfamily.

### 発生段階

Accumulates steadily during G2 and is abruptly destroyed at mitosis.

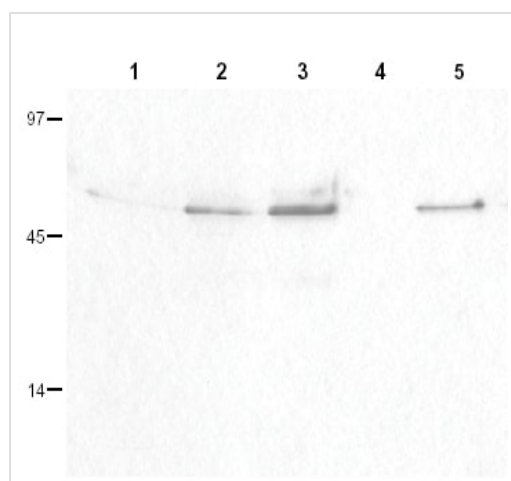
### 翻訳後修飾

Ubiquitinated by the SCF(NIP) complex during interphase, leading to its destruction. Not ubiquitinated during G2/M phases.

### 細胞内局在

Cytoplasm. Nucleus. Cytoplasm > cytoskeleton > centrosome.

## 画像



Western blot - Anti-Cyclin B1 (phospho S126) antibody (ab3488)

**All lanes :** Anti-Cyclin B1 (phospho S126) antibody (ab3488) at 1/100 dilution

**Lane 1 :** HeLa whole cell lysate

**Lane 2 :** H23 whole cell lysate

**Lane 3 :** Hepatocarcinoma (Hep3b) cell lysate

**Lane 4 :** Glioblastoma (T98G) cell lysate

**Lane 5 :** B cell lymphoblast (Daudi) cell lysate

Lysates/proteins at 50 µg per lane.

### Secondary

**All lanes :** HRP-conjugated Goat anti-Rabbit IgG at 1/5000 dilution

Developed using the ECL technique.

Performed under reducing conditions.

**Predicted band size:** 48 kDa

**Exposure time:** 20 seconds

**Please note:** All products are "FOR RESEARCH USE ONLY. NOT FOR USE IN DIAGNOSTIC PROCEDURES"

#### **Our Abpromise to you: Quality guaranteed and expert technical support**

---

- Replacement or refund for products not performing as stated on the datasheet
- Valid for 12 months from date of delivery
- Response to your inquiry within 24 hours
- We provide support in Chinese, English, French, German, Japanese and Spanish
- Extensive multi-media technical resources to help you
- We investigate all quality concerns to ensure our products perform to the highest standards

If the product does not perform as described on this datasheet, we will offer a refund or replacement. For full details of the Abpromise, please visit <https://www.abcam.co.jp/abpromise> or contact our technical team.

#### **Terms and conditions**

---

- Guarantee only valid for products bought direct from Abcam or one of our authorized distributors