

Anti-Cyclin B1 antibody [V92.1] ab18221

4 References [画像数 1](#)

製品の概要

製品名	Anti-Cyclin B1 antibody [V92.1]
製品の詳細	Mouse monoclonal [V92.1] to Cyclin B1
由来種	Mouse
特異性	V92.1 can immunoprecipitate active CDK1/cyclin B1 complexes.
アプリケーション	適用あり: ICC/IF
種交差性	交差種: Human
免疫原	Full length protein (Hamster).
特記事項	<p>The Life Science industry has been in the grips of a reproducibility crisis for a number of years. Abcam is leading the way in addressing this with our range of recombinant monoclonal antibodies and knockout edited cell lines for gold-standard validation. Please check that this product meets your needs before purchasing.</p> <p>If you have any questions, special requirements or concerns, please send us an inquiry and/or contact our Support team ahead of purchase. Recommended alternatives for this product can be found below, along with publications, customer reviews and Q&As</p>

製品の特性

製品の状態	Liquid
保存方法	Shipped at 4°C. Store at +4°C short term (1-2 weeks). Upon delivery aliquot. Store at -20°C or -80°C. Avoid freeze / thaw cycle.
バッファー	Preservative: 0.02% Sodium azide Constituent: 99.98% PBS
精製度	Protein A/G purified
ポリ/モノ	モノクローナル
クローン名	V92.1
アイソタイプ	IgG1

アプリケーション

The Abpromise guarantee

Abpromise保証は、次のテスト済みアプリケーションにおけるab18221の使用に適用されます

アプリケーションノートには、推奨の開始希釈率がありますが、適切な希釈率につきましてはご確認ください。

アプリケーション	Abreviews	特記事項
ICC/IF		

追加情報

ICC/IF: Use at a concentration of 1 µg/ml.

IP: Use at an assay dependent dilution.

Not tested in other applications.

Optimal dilutions/concentrations should be determined by the end user.

ターゲット情報

機能

Essential for the control of the cell cycle at the G2/M (mitosis) transition.

配列類似性

Belongs to the cyclin family. Cyclin AB subfamily.

発生段階

Accumulates steadily during G2 and is abruptly destroyed at mitosis.

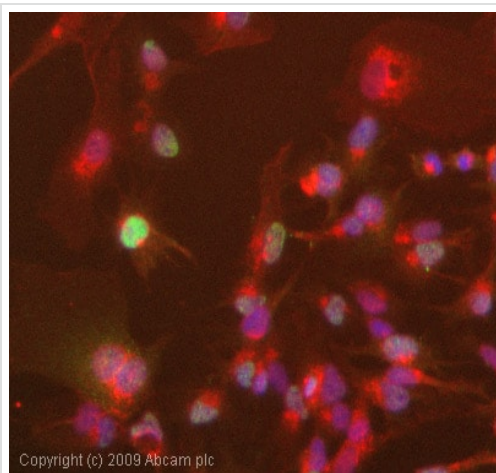
翻訳後修飾

Ubiquitinated by the SCF(NIP) complex during interphase, leading to its destruction. Not ubiquitinated during G2/M phases.

細胞内局在

Cytoplasm. Nucleus. Cytoplasm > cytoskeleton > centrosome.

画像



Copyright (c) 2009 Abcam plc

Immunocytochemistry/ Immunofluorescence - Anti-Cyclin B1 antibody [V92.1] (ab18221)

ICC/IF image of ab18221 stained HepG2 cells. The cells were 4% formaldehyde fixed (10 min) and then incubated in 1%BSA / 10% normal goat serum / 0.3M glycine in 0.1% PBS-Tween for 1h to permeabilise the cells and block non-specific protein-protein interactions. The cells were then incubated with the antibody (ab18221, 1µg/ml) overnight at +4°C. The secondary antibody (green) was Alexa Fluor® 488 goat anti-mouse IgG (H+L) used at a 1/1000 dilution for 1h. Alexa Fluor® 594 WGA was used to label plasma membranes (red) at a 1/200 dilution for 1h. DAPI was used to stain the cell nuclei (blue) at a concentration of 1.43µM.

Please note: All products are "FOR RESEARCH USE ONLY. NOT FOR USE IN DIAGNOSTIC PROCEDURES"

Our Abpromise to you: Quality guaranteed and expert technical support

- Replacement or refund for products not performing as stated on the datasheet
- Valid for 12 months from date of delivery

- Response to your inquiry within 24 hours
- We provide support in Chinese, English, French, German, Japanese and Spanish
- Extensive multi-media technical resources to help you
- We investigate all quality concerns to ensure our products perform to the highest standards

If the product does not perform as described on this datasheet, we will offer a refund or replacement. For full details of the Abpromise, please visit <https://www.abcam.co.jp/abpromise> or contact our technical team.

Terms and conditions

- Guarantee only valid for products bought direct from Abcam or one of our authorized distributors