

Anti-Cyclin A2 antibody [EPRR19346-64] ab211735

リコンビナント RabMAb[®]

★★★★★ [2 Abreviews](#) [1 References](#) [画像数 11](#)

製品の概要

製品名	Anti-Cyclin A2 antibody [EPRR19346-64]
製品の詳細	Rabbit monoclonal [EPRR19346-64] to Cyclin A2
由来種	Rabbit
アプリケーション	適用あり: ICC/IF, IP, IHC-P, WB
種交差性	交差種: Human
免疫原	Recombinant fragment. This information is proprietary to Abcam and/or its suppliers.
ポジティブ・コントロール	WB: MCF7, HeLa, K562, SW480 and HEK-293 whole cell lysates; human fetal liver and fetal kidney lysates. IHC-P: Human tonsil, colon, colon cancer, cervix cancer and endometrial cancer tissues. ICC/IF: HeLa and K562 cells. IP: HeLa whole cell lysate.
特記事項	<p>This product is a recombinant monoclonal antibody, which offers several advantages including:</p> <ul style="list-style-type: none">- High batch-to-batch consistency and reproducibility- Improved sensitivity and specificity- Long-term security of supply- Animal-free production <p>For more information see here.</p> <p>Our RabMAb[®] technology is a patented hybridoma-based technology for making rabbit monoclonal antibodies. For details on our patents, please refer to RabMAb[®] patents.</p>

製品の特性

製品の状態	Liquid
保存方法	Shipped at 4°C. Store at +4°C short term (1-2 weeks). Upon delivery aliquot. Store at -20°C long term. Avoid freeze / thaw cycle.
バッファー	pH: 7.2 Preservative: 0.01% Sodium azide Constituents: 59% PBS, 40% Glycerol (glycerin, glycerine), 0.05% BSA
精製度	Protein A purified
ポリ/モノ	モノクローナル
クローン名	EPRR19346-64

アプリケーション

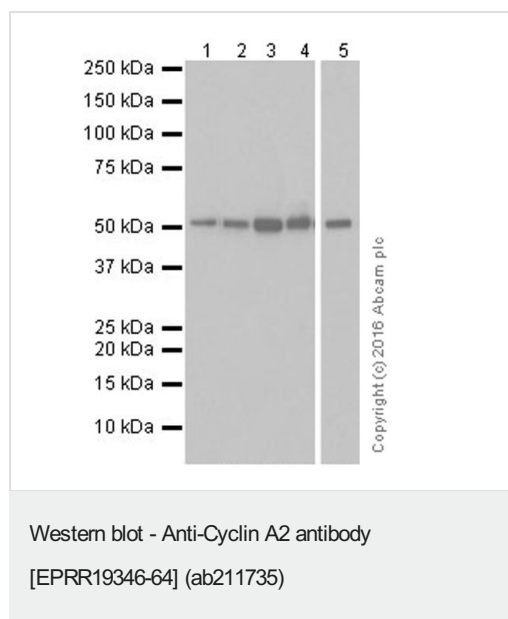
The Abpromise guarantee **Abpromise保証は、次のテスト済みアプリケーションにおけるab211735の使用に適用されます**
 アプリケーションノートには、推奨の開始希釈率がありますが、適切な希釈率につきましてはご検討ください。

アプリケーション	Abreviews	特記事項
ICC/IF	★★★★★ (1)	1/250.
IP		1/30.
IHC-P		1/2000. Perform heat mediated antigen retrieval with Tris/EDTA buffer pH 9.0 before commencing with IHC staining protocol.
WB	★★★★★ (1)	1/1000. Detects a band of approximately 50 kDa (predicted molecular weight: 49 kDa).

ターゲット情報

機能	Essential for the control of the cell cycle at the G1/S (start) and the G2/M (mitosis) transitions.
配列類似性	Belongs to the cyclin family. Cyclin AB subfamily.
発生段階	Accumulates steadily during G2 and is abruptly destroyed at mitosis.
細胞内局在	Nucleus. Cytoplasm. Cytoplasmic when associated with SCAPER.

画像



Lanes 1-4 : Anti-Cyclin A2 antibody [EPRR19346-64] (ab211735) at 1/1000 dilution

Lane 5 : Anti-Cyclin A2 antibody [EPRR19346-64] (ab211735) at 1/10000 dilution

Lane 1 : MCF7 (Human breast adenocarcinoma cell line) whole cell lysate

Lane 2 : HeLa (Human epithelial cell line from cervix adenocarcinoma) whole cell lysate

Lane 3 : K562 (Human chronic myelogenous leukemia cell line from bone marrow) whole cell lysate

Lane 4 : SW480 (Human colorectal adenocarcinoma cell line) whole cell lysate

Lane 5 : HEK-293 (Human epithelial cell line from embryonic kidney) whole cell lysate

Lysates/proteins at 10 µg per lane.

Secondary

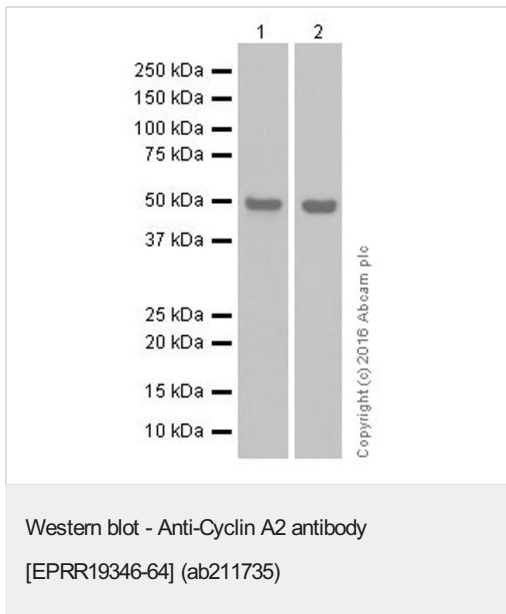
All lanes : Goat Anti-Rabbit IgG H&L (HRP) (**ab97051**) at 1/100000 dilution

Predicted band size: 49 kDa

Observed band size: 50 kDa

Exposure time: 3 seconds

Blocking/Dilution buffer: 5% NFDm/TBST.



All lanes : Anti-Cyclin A2 antibody [EPRR19346-64] (ab211735) at 1/1000 dilution

Lane 1 : Human fetal liver lysate

Lane 2 : Human fetal kidney lysate

Lysates/proteins at 10 µg per lane.

Secondary

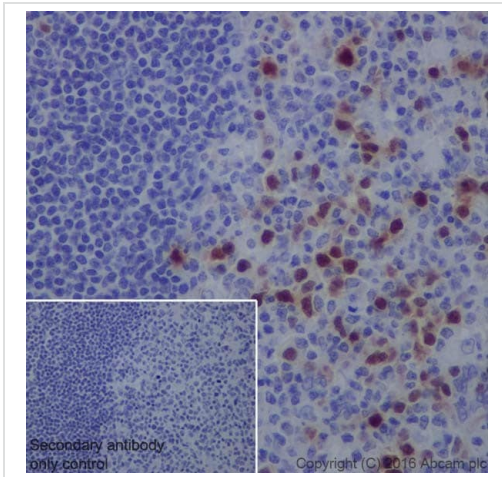
All lanes : Goat Anti-Rabbit IgG Peroxidase Conjugate, specific to the non-reduced form of IgG at 1/10000 dilution

Predicted band size: 49 kDa

Observed band size: 50 kDa

Blocking/Dilution buffer: 5% NFDm/TBST.

Exposure time: Lane 1: 30 seconds; Lane 2: 3 minutes.

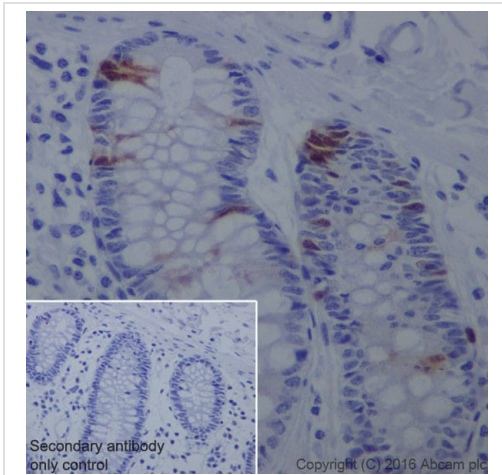


Immunohistochemistry (Formalin/PFA-fixed paraffin-embedded sections) - Anti-Cyclin A2 antibody [EPRR19346-64] (ab211735)

Immunohistochemical analysis of paraffin-embedded human tonsil tissue labeling Cyclin A2 with ab211735 at 1/2000 dilution, followed by Goat Anti-Rabbit IgG H&L (HRP) (**ab97051**) at 1/500 dilution. Nuclear and weak cytoplasmic staining on germinal center cells of human tonsil tissue is observed. Counter stained with Hematoxylin.

Secondary antibody only control: Used PBS instead of primary antibody, secondary antibody is Goat Anti-Rabbit IgG H&L (HRP) (**ab97051**) at 1/500 dilution.

Perform heat mediated antigen retrieval with Tris/EDTA buffer pH 9.0 before commencing with IHC staining protocol.

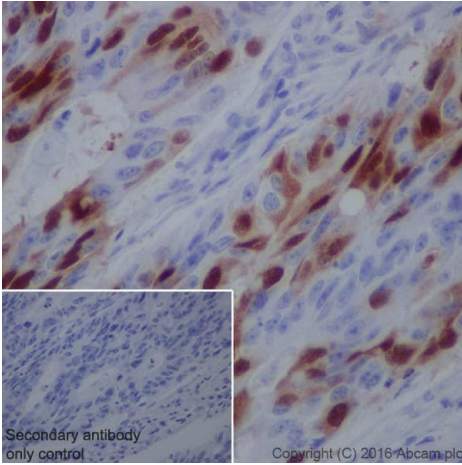


Immunohistochemistry (Formalin/PFA-fixed paraffin-embedded sections) - Anti-Cyclin A2 antibody [EPRR19346-64] (ab211735)

Immunohistochemical analysis of paraffin-embedded human colon tissue labeling Cyclin A2 with ab211735 at 1/2000 dilution, followed by Goat Anti-Rabbit IgG H&L (HRP) (**ab97051**) at 1/500 dilution. Nuclear and weak cytoplasmic staining on a small proportion of epithelial cells of human colon tissue is observed. Counter stained with Hematoxylin.

Secondary antibody only control: Used PBS instead of primary antibody, secondary antibody is Goat Anti-Rabbit IgG H&L (HRP) (**ab97051**) at 1/500 dilution.

Perform heat mediated antigen retrieval with Tris/EDTA buffer pH 9.0 before commencing with IHC staining protocol.

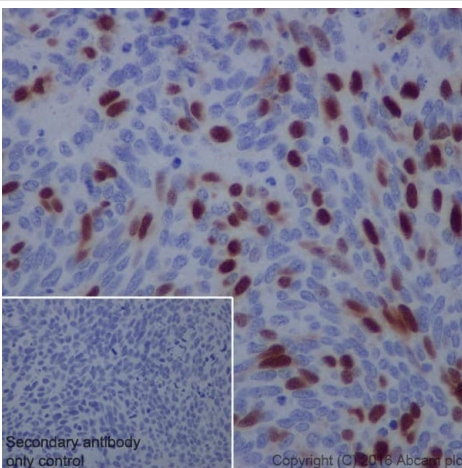


Immunohistochemistry (Formalin/PFA-fixed paraffin-embedded sections) - Anti-Cyclin A2 antibody [EPRR19346-64] (ab211735)

Immunohistochemical analysis of paraffin-embedded human colon cancer tissue labeling Cyclin A2 with ab211735 at 1/2000 dilution, followed by Goat Anti-Rabbit IgG H&L (HRP) (**ab97051**) at 1/500 dilution. Nuclear and weak cytoplasmic staining on some tumor cells of human colon cancer tissue is observed. Counter stained with Hematoxylin.

Secondary antibody only control: Used PBS instead of primary antibody, secondary antibody is Goat Anti-Rabbit IgG H&L (HRP) (**ab97051**) at 1/500 dilution.

Perform heat mediated antigen retrieval with Tris/EDTA buffer pH 9.0 before commencing with IHC staining protocol.

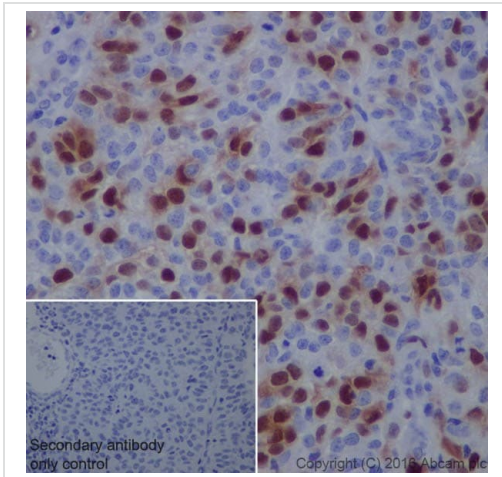


Immunohistochemistry (Formalin/PFA-fixed paraffin-embedded sections) - Anti-Cyclin A2 antibody [EPRR19346-64] (ab211735)

Immunohistochemical analysis of paraffin-embedded human cervix cancer tissue labeling Cyclin A2 with ab211735 at 1/2000 dilution, followed by Goat Anti-Rabbit IgG H&L (HRP) (**ab97051**) at 1/500 dilution. Nuclear and weak cytoplasmic staining on some tumor cells of human cervix cancer tissue is observed. Counter stained with Hematoxylin.

Secondary antibody only control: Used PBS instead of primary antibody, secondary antibody is Goat Anti-Rabbit IgG H&L (HRP) (**ab97051**) at 1/500 dilution.

Perform heat mediated antigen retrieval with Tris/EDTA buffer pH 9.0 before commencing with IHC staining protocol.

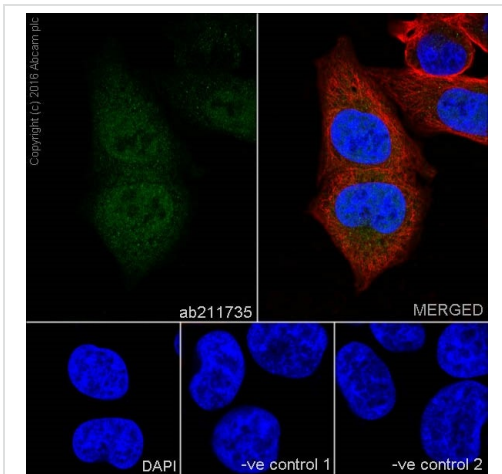


Immunohistochemistry (Formalin/PFA-fixed paraffin-embedded sections) - Anti-Cyclin A2 antibody [EPRR19346-64] (ab211735)

Immunohistochemical analysis of paraffin-embedded human endometrial cancer tissue labeling Cyclin A2 with ab211735 at 1/2000 dilution, followed by Goat Anti-Rabbit IgG H&L (HRP) (**ab97051**) at 1/500 dilution. Nuclear and weak cytoplasmic staining on some tumor cells of human endometrial cancer tissue is observed. Counter stained with Hematoxylin.

Secondary antibody only control: Used PBS instead of primary antibody, secondary antibody is Goat Anti-Rabbit IgG H&L (HRP) (**ab97051**) at 1/500 dilution.

Perform heat mediated antigen retrieval with Tris/EDTA buffer pH 9.0 before commencing with IHC staining protocol.



Immunocytochemistry/ Immunofluorescence - Anti-Cyclin A2 antibody [EPRR19346-64] (ab211735)

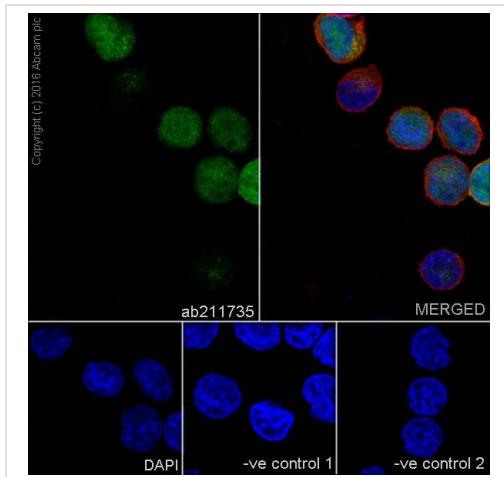
Immunofluorescent analysis of 4% paraformaldehyde-fixed, 0.1% Triton X-100 permeabilized HeLa (Human epithelial cell line from cervix adenocarcinoma) cells labeling Cyclin A2 with ab211735 at 1/250 dilution, followed by Goat Anti-Rabbit IgG H&L (Alexa Fluor[®] 488) (**ab150077**) secondary antibody at 1/1000 dilution (green). Confocal image showing nuclear and cytoplasmic staining on HeLa cell line. The nuclear counter stain is DAPI (blue).

Tubulin is detected with Anti-alpha Tubulin mouse MAb (**ab7291**) at 1/1000 dilution and Goat Anti-Mouse IgG H&L (Alexa Fluor[®] 594) (**ab150120**) secondary antibody at 1/1000 dilution (red).

The negative controls are as follows:

-ve control 1: ab211735 at 1/250 dilution followed by Goat Anti-Mouse IgG H&L (Alexa Fluor[®] 594) (**ab150120**) secondary antibody at 1/1000 dilution.

-ve control 2: Anti-alpha Tubulin mouse MAb (**ab7291**) at 1/1000 dilution followed by Goat Anti-Rabbit IgG H&L (Alexa Fluor[®] 488) (**ab150077**) secondary antibody at 1/1000 dilution.



Immunocytochemistry/ Immunofluorescence - Anti-Cyclin A2 antibody [EPRR19346-64] (ab211735)

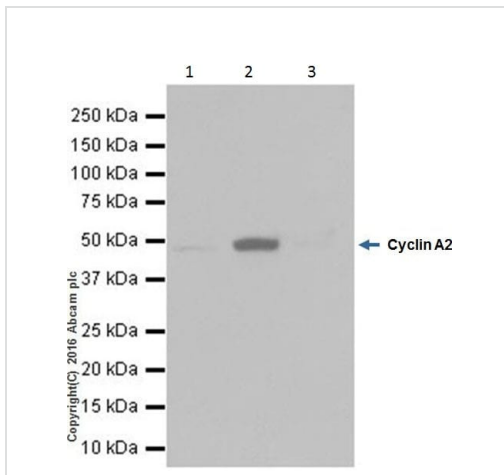
Immunofluorescent analysis of 4% paraformaldehyde-fixed, 0.1% Triton X-100 permeabilized K562 (Human chronic myelogenous leukemia cell line from bone marrow) cells labeling Cyclin A2 with ab211735 at 1/250 dilution, followed by Goat Anti-Rabbit IgG H&L (Alexa Fluor® 488) (**ab150077**) secondary antibody at 1/1000 dilution (green). Confocal image showing nuclear and cytoplasmic staining on K562 cell line. The nuclear counter stain is DAPI (blue).

Tubulin is detected with Anti-alpha Tubulin mouse MAb (**ab7291**) at 1/1000 dilution and Goat Anti-Mouse IgG H&L (Alexa Fluor® 594) (**ab150120**) secondary antibody at 1/1000 dilution (red).

The negative controls are as follows:

-ve control 1: ab211735 at 1/250 dilution followed by Goat Anti-Mouse IgG H&L (Alexa Fluor® 594) (**ab150120**) secondary antibody at 1/1000 dilution.

-ve control 2: Anti-alpha Tubulin mouse MAb (**ab7291**) at 1/1000 dilution followed by Goat Anti-Rabbit IgG H&L (Alexa Fluor® 488) (**ab150077**) secondary antibody at 1/1000 dilution.



Immunoprecipitation - Anti-Cyclin A2 antibody [EPRR19346-64] (ab211735)

Cyclin A2 was immunoprecipitated from 0.35 mg of HeLa (Human epithelial cell line from cervix adenocarcinoma) whole cell lysate with ab211735 at 1/30 dilution. Western blot was performed from the immunoprecipitate using ab211735 at 1/1000 dilution. VeriBlot for IP Detection Reagent (HRP) (**ab131366**), was used for detection at 1/10,000 dilution

Lane 1: HeLa whole cell lysate 10ug (Input).





Lane 2: ab211735 IP in HeLa whole cell lysate.

Lane 3: Rabbit monoclonal IgG (**ab172730**) instead of ab211735 in HeLa whole cell lysate.

Blocking and dilution buffer and concentration: 5% NFDm/TBST.

Exposure time: 3 seconds.

Why choose a recombinant antibody?

 <p>Research with confidence Consistent and reproducible results</p>	 <p>Long-term and scalable supply Recombinant technology</p>
 <p>Success from the first experiment Confirmed specificity</p>	 <p>Ethical standards compliant Animal-free production</p>

Anti-Cyclin A2 antibody [EPRR19346-64]
(ab211735)

Please note: All products are "FOR RESEARCH USE ONLY. NOT FOR USE IN DIAGNOSTIC PROCEDURES"

Our Abpromise to you: Quality guaranteed and expert technical support

- Replacement or refund for products not performing as stated on the datasheet
- Valid for 12 months from date of delivery
- Response to your inquiry within 24 hours
- We provide support in Chinese, English, French, German, Japanese and Spanish
- Extensive multi-media technical resources to help you
- We investigate all quality concerns to ensure our products perform to the highest standards

If the product does not perform as described on this datasheet, we will offer a refund or replacement. For full details of the Abpromise, please visit <https://www.abcam.co.jp/abpromise> or contact our technical team.

Terms and conditions

- Guarantee only valid for products bought direct from Abcam or one of our authorized distributors