

Anti-Cyclin A2 antibody [EPR17351] ab181591

リコンビナント **RabMAb**

★★★★★ **3 Abreviews** **79 References** 画像数 12

製品の概要

製品名	Anti-Cyclin A2 antibody [EPR17351]
製品の詳細	Rabbit monoclonal [EPR17351] to Cyclin A2
由来種	Rabbit
アプリケーション	適用あり: ICC/IF, IHC-P, WB
種交差性	交差種: Mouse, Rat, Human
免疫原	Recombinant fragment. This information is proprietary to Abcam and/or its suppliers.
ポジティブ・コントロール	WB: Jurkat, C6, RAW 264.7 and PC-12 whole cell lysates; HeLa Untreated, asynchronous cells, HeLa G1/S arrested cells (thymidine treatment) and HeLa G2/M arrested cells (sequential thymidine and nocodazole treatments) cell lysates; Human tonsil and fetal kidney lysates; Rat spleen lysate. IHC-P: Human tonsil, Human cervix carcinoma, rat colon and mouse endometrium tissues. ICC/IF: HeLa cells.
特記事項	<p>This product is a recombinant monoclonal antibody, which offers several advantages including:</p> <ul style="list-style-type: none"> - High batch-to-batch consistency and reproducibility - Improved sensitivity and specificity - Long-term security of supply - Animal-free production <p>For more information see here.</p> <p>Our RabMAb[®] technology is a patented hybridoma-based technology for making rabbit monoclonal antibodies. For details on our patents, please refer to RabMAb[®] patents.</p>

製品の特性

製品の状態	Liquid
保存方法	Shipped at 4°C. Store at +4°C short term (1-2 weeks). Upon delivery aliquot. Store at -20°C long term. Avoid freeze / thaw cycle.
バッファー	Preservative: 0.01% Sodium azide Constituents: 59% PBS, 40% Glycerol, 0.05% BSA
精製度	Protein A purified
ポリ/モノ	モノクローナル
クローン名	EPR17351

アプリケーション

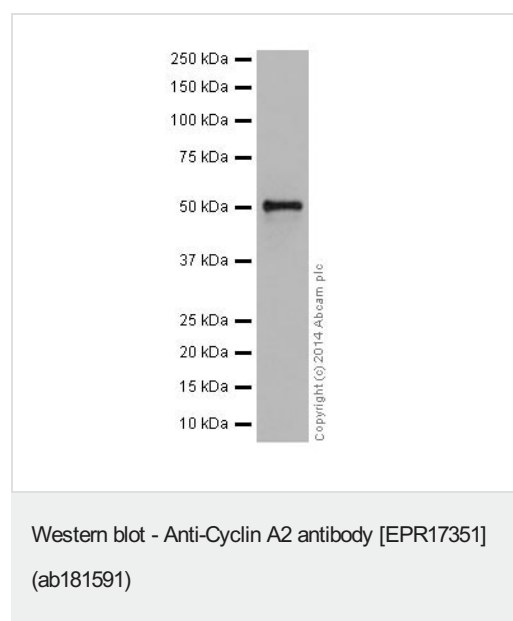
The Abpromise guarantee Abpromise保証は、次のテスト済みアプリケーションにおけるab181591の使用に適用されます
アプリケーションノートには、推奨の開始希釈率がありますが、適切な希釈率につきましてはご検討ください。

アプリケーション	Abreviews	特記事項
ICC/IF		1/500.
IHC-P		1/500. Perform heat mediated antigen retrieval with Tris/EDTA buffer pH 9.0 before commencing with IHC staining protocol.
WB	★★★★★ (1)	1/2000. Detects a band of approximately 50 kDa (predicted molecular weight: 47 kDa).

ターゲット情報

機能	Essential for the control of the cell cycle at the G1/S (start) and the G2/M (mitosis) transitions.
配列類似性	Belongs to the cyclin family. Cyclin AB subfamily.
発生段階	Accumulates steadily during G2 and is abruptly destroyed at mitosis.
細胞内局在	Nucleus. Cytoplasm. Cytoplasmic when associated with SCAPER.

画像



Anti-Cyclin A2 antibody [EPR17351] (ab181591) at 1/20000 dilution + Jurkat (Human T cell leukemia cell line from peripheral blood) whole cell lysate at 20 µg

Secondary

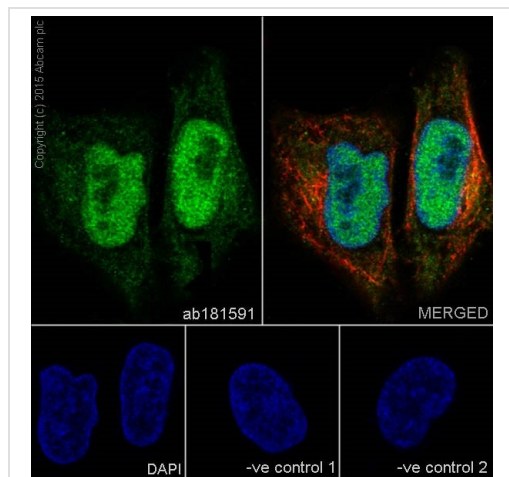
Goat Anti-Rabbit IgG, (H+L), Peroxidase conjugated at 1/1000 dilution

Predicted band size: 47 kDa

Observed band size: 50 kDa

Exposure time: 10 seconds

Blocking/Dilution buffer: 5% NFDM/TBST.



Immunocytochemistry/ Immunofluorescence - Anti-Cyclin A2 antibody [EPR17351] (ab181591)

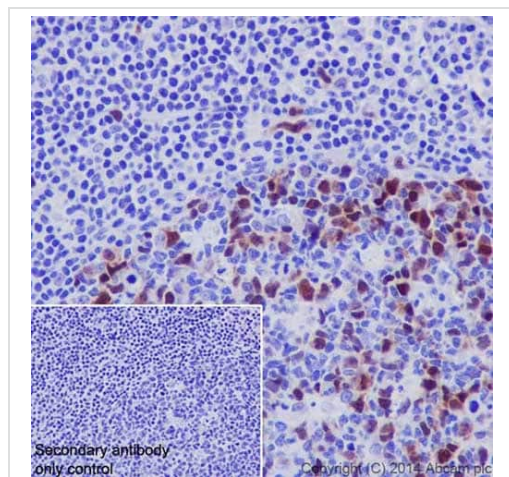
Immunofluorescent analysis of 4% paraformaldehyde-fixed, 0.1% Triton X-100 permeabilized HeLa (Human epithelial cell line from cervix adenocarcinoma) cells labeling Cyclin A2 with ab181591 at 1/500 dilution, followed by Goat Anti-Rabbit IgG H&L (Alexa Fluor® 488) ([ab150077](#)) secondary antibody at 1/500 dilution (green). Confocal image showing nuclear and weakly cytoplasmic staining on HeLa cells. The nuclear counter stain is DAPI (blue).

Tubulin is detected with Anti-alpha Tubulin antibody [EPR17351]- Loading Control ([ab7291](#)) at 1/1000 dilution, followed by Goat Anti-Mouse IgG H&L (Alexa Fluor® 594) preadsorbed ([ab150120](#)) at 1/1000 dilution (red).

The negative controls are as follows:

-ve control 1: ab181591 at 1/500 dilution, followed by Goat Anti-Mouse IgG H&L (Alexa Fluor® 594) preadsorbed ([ab150120](#)) at 1/500 dilution.

-ve control 2: Anti-alpha Tubulin antibody [EPR17351]- Loading Control ([ab7291](#)) at 1/1000 dilution, followed by Goat Anti-Rabbit IgG H&L (Alexa Fluor® 488) ([ab150077](#)) secondary antibody at 1/500 dilution.

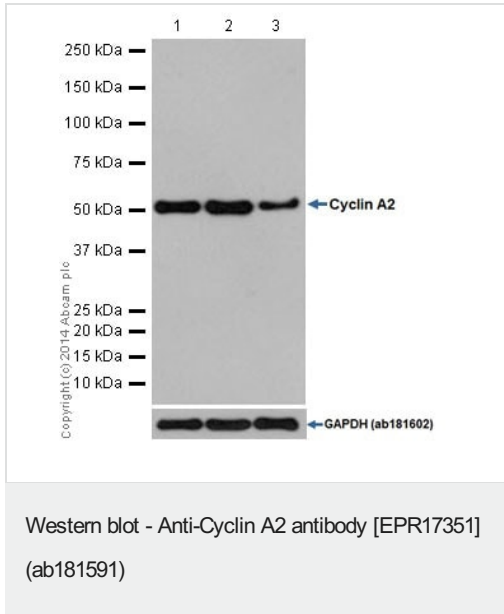


Immunohistochemistry (Formalin/PFA-fixed paraffin-embedded sections) - Anti-Cyclin A2 antibody [EPR17351] (ab181591)

Immunohistochemical analysis of paraffin-embedded Human tonsil tissue labeling Cyclin A2 with ab181591 at 1/500 dilution, followed by Goat Anti-Rabbit IgG H&L (HRP) ([ab97051](#)) at 1/500 dilution. Nuclear and weak cytoplasmic staining on germinal center cells of Human tonsil tissue is observed. Counter stained with Hematoxylin.

Secondary antibody only control: Used PBS instead of primary antibody, secondary antibody is Goat Anti-Rabbit IgG H&L (HRP) ([ab97051](#)) at 1/500 dilution.

Perform heat mediated antigen retrieval with Tris/EDTA buffer pH 9.0 before commencing with IHC staining protocol.



All lanes : Anti-Cyclin A2 antibody [EPR17351] (ab181591) at 1/20000 dilution

Lane 1 : HeLa (Human epithelial cell line from cervix adenocarcinoma) lysate; Untreated, asynchronous cells ([ab136811](#))

Lane 2 : HeLa (Human epithelial cell line from cervix adenocarcinoma) lysate; G1/S arrested cells (thymidine treatment) ([ab136811](#))

Lane 3 : HeLa (Human epithelial cell line from cervix adenocarcinoma) lysate; G2/M arrested cells (sequential thymidine and nocodazole treatments) ([ab136811](#))

Lysates/proteins at 1 µg per lane.

Secondary

All lanes : Goat Anti-Rabbit IgG, (H+L), Peroxidase conjugated or Anti-Rabbit IgG (HRP), specific to the non-reduced form of IgG at 1/1000 dilution

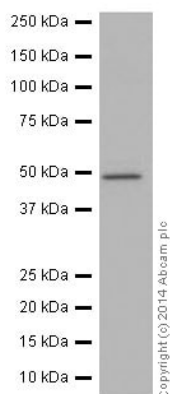
Predicted band size: 47 kDa

Observed band size: 50 kDa

Exposure time: 30 seconds

Blocking/Dilution buffer: 5% NFDm/TBST.

Cyclin A2 is down regulated at the G2/M phase.



Western blot - Anti-Cyclin A2 antibody [EPR17351]
(ab181591)

Anti-Cyclin A2 antibody [EPR17351] (ab181591) + Human tonsil lysate at 10 µg

Secondary

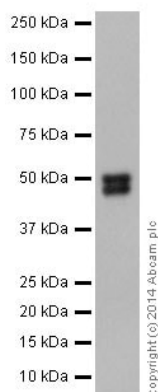
Anti-Rabbit IgG (HRP), specific to the non-reduced form of IgG at 1/1000 dilution

Predicted band size: 47 kDa

Observed band size: 50 kDa

Exposure time: 1 minute

Blocking/Dilution buffer: 5% NFDm/TBST.



Western blot - Anti-Cyclin A2 antibody [EPR17351]
(ab181591)

Anti-Cyclin A2 antibody [EPR17351] (ab181591) at 1/2000 dilution + Human fetal kidney lysate at 10 µg

Secondary

Anti-Rabbit IgG (HRP), specific to the non-reduced form of IgG at 1/1000 dilution

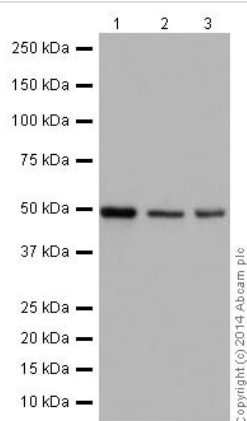
Predicted band size: 47 kDa

Observed band size: 50 kDa

Exposure time: 3 minutes

Blocking/Dilution buffer: 5% NFDm/TBST.

The smaller band is due to a tissue-specific splice variant, PMID 22745723.



Western blot - Anti-Cyclin A2 antibody [EPR17351]
(ab181591)

All lanes : Anti-Cyclin A2 antibody [EPR17351] (ab181591) at 1/2000 dilution

Lane 1 : C6 (Rat glial tumor cell line) whole cell lysate

Lane 2 : RAW 264.7 (Mouse macrophage cell line transformed with Abelson murine leukemia virus) whole cell lysate

Lane 3 : PC-12 (Rat adrenal gland pheochromocytoma cell line) whole cell lysate

Lysates/proteins at 10 µg per lane.

Secondary

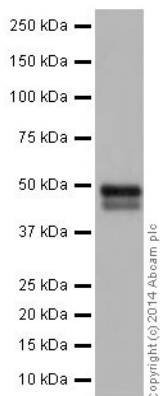
All lanes : Goat Anti-Rabbit IgG, (H+L), Peroxidase conjugated at 1/1000 dilution

Predicted band size: 47 kDa

Observed band size: 50 kDa

Exposure time: 3 seconds

Blocking/Dilution buffer: 5% NFDM/TBST.



Western blot - Anti-Cyclin A2 antibody [EPR17351]
(ab181591)

Anti-Cyclin A2 antibody [EPR17351] (ab181591) at 1/2000 dilution
+ Rat spleen lysate at 10 µg

Secondary

Goat Anti-Rabbit IgG, (H+L), Peroxidase conjugated at 1/1000 dilution

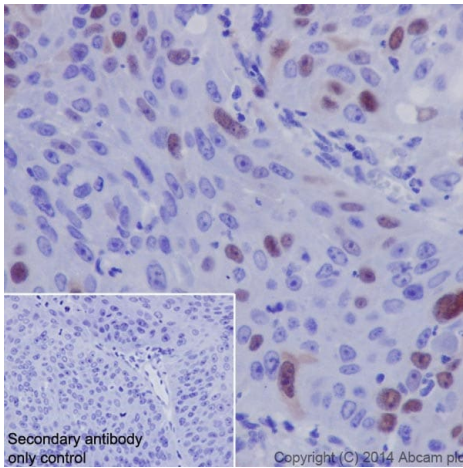
Predicted band size: 47 kDa

Observed band size: 50 kDa

Exposure time: 3 minutes

Blocking/Dilution buffer: 5% NFDM/TBST.

The smaller band is due to a tissue-specific splice variant, PMID 22745723.

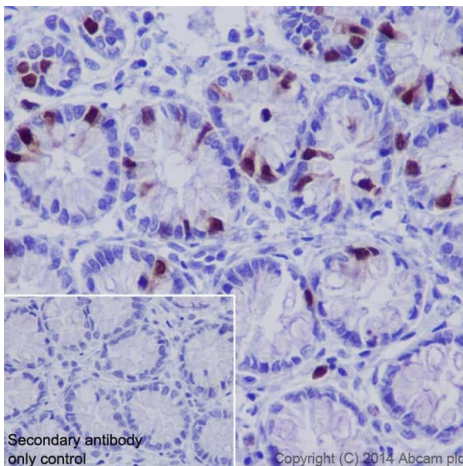


Immunohistochemistry (Formalin/PFA-fixed paraffin-embedded sections) - Anti-Cyclin A2 antibody [EPR17351] (ab181591)

Immunohistochemical analysis of paraffin-embedded Human cervix carcinoma tissue labeling Cyclin A2 with ab181591 at 1/500 dilution, followed by Goat Anti-Rabbit IgG H&L (HRP) ([ab97051](#)) at 1/500 dilution. Nuclear and weak cytoplasmic staining on some tumor cells in Human cervix carcinoma tissue is observed. Counter stained with Hematoxylin.

Secondary antibody only control: Used PBS instead of primary antibody, secondary antibody is Goat Anti-Rabbit IgG H&L (HRP) ([ab97051](#)) at 1/500 dilution.

Perform heat mediated antigen retrieval with Tris/EDTA buffer pH 9.0 before commencing with IHC staining protocol.

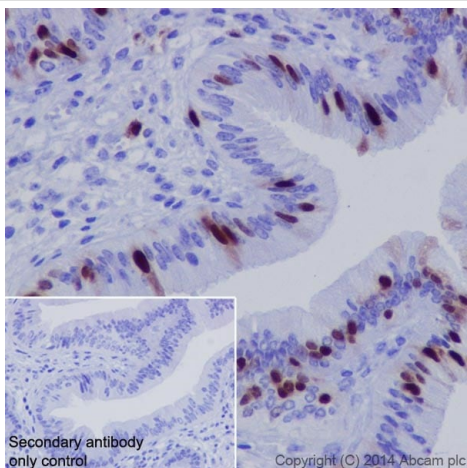


Immunohistochemistry (Formalin/PFA-fixed paraffin-embedded sections) - Anti-Cyclin A2 antibody [EPR17351] (ab181591)

Immunohistochemical analysis of paraffin-embedded rat colon tissue labeling Cyclin A2 with ab181591 at 1/500 dilution, followed by Goat Anti-Rabbit IgG H&L (HRP) ([ab97051](#)) at 1/500 dilution. Nuclear and weak cytoplasmic staining on a proportion of epithelial cells in rat colon tissue is observed. Counter stained with Hematoxylin.

Secondary antibody only control: Used PBS instead of primary antibody, secondary antibody is Goat Anti-Rabbit IgG H&L (HRP) ([ab97051](#)) at 1/500 dilution.

Perform heat mediated antigen retrieval with Tris/EDTA buffer pH 9.0 before commencing with IHC staining protocol.



Immunohistochemistry (Formalin/PFA-fixed paraffin-embedded sections) - Anti-Cyclin A2 antibody [EPR17351] (ab181591)

Immunohistochemical analysis of paraffin-embedded mouse endometrium tissue labeling Cyclin A2 with ab181591 at 1/500 dilution, followed by Goat Anti-Rabbit IgG H&L (HRP) (**ab97051**) at 1/500 dilution. Nuclear and weak cytoplasmic staining on a proportion of epithelial cells in mouse endometrial tissue is observed. Counter stained with Hematoxylin.

Secondary antibody only control: Used PBS instead of primary antibody, secondary antibody is Goat Anti-Rabbit IgG H&L (HRP) (**ab97051**) at 1/500 dilution.

Perform heat mediated antigen retrieval with Tris/EDTA buffer pH 9.0 before commencing with IHC staining protocol.

Why choose a recombinant antibody?



Research with confidence
Consistent and reproducible results



Long-term and scalable supply
Recombinant technology



Success from the first experiment
Confirmed specificity



Ethical standards compliant
Animal-free production

Anti-Cyclin A2 antibody [EPR17351] (ab181591)

Please note: All products are "FOR RESEARCH USE ONLY. NOT FOR USE IN DIAGNOSTIC PROCEDURES"

Our Abpromise to you: Quality guaranteed and expert technical support

- Replacement or refund for products not performing as stated on the datasheet
- Valid for 12 months from date of delivery
- Response to your inquiry within 24 hours
- We provide support in Chinese, English, French, German, Japanese and Spanish
- Extensive multi-media technical resources to help you
- We investigate all quality concerns to ensure our products perform to the highest standards

If the product does not perform as described on this datasheet, we will offer a refund or replacement. For full details of the Abpromise, please visit <https://www.abcam.co.jp/abpromise> or contact our technical team.

Terms and conditions

- Guarantee only valid for products bought direct from Abcam or one of our authorized distributors