


### Anti-Cyclin A2 antibody - C-terminal ab227277

画像を見る

医薬用外劇物

#### 製品の概要

製品名	Anti-Cyclin A2 antibody - C-terminal
製品の詳細	Rabbit polyclonal to Cyclin A2 - C-terminal
由来種	Rabbit
アプリケーション	<b>適用あり:</b> WB, IHC-P, ICC/IF
種交差性	<b>交差種:</b> Mouse, Human <b>交差が予測される動物種:</b> Rat, Rabbit, Cow, Pig, Rhesus monkey 
免疫原	Recombinant fragment within Human Cyclin A2 (C terminal). The exact sequence is proprietary. Database link: <a href="#">P20248</a>
ポジティブ・コントロール	WB: Mouse brain tissue lysate. IHC-P: Human lung adenocarcinoma tissue. ICC/IF: HeLa cells.
特記事項	<p>The Life Science industry has been in the grips of a reproducibility crisis for a number of years. Abcam is leading the way in addressing this with our range of recombinant monoclonal antibodies and knockout edited cell lines for gold-standard validation. Please check that this product meets your needs before purchasing.</p> <p>If you have any questions, special requirements or concerns, please send us an inquiry and/or contact our Support team ahead of purchase. Recommended alternatives for this product can be found below, along with publications, customer reviews and Q&amp;As</p>

#### 製品の特性

製品の状態	Liquid
保存方法	Shipped at 4°C. Store at +4°C short term (1-2 weeks). Upon delivery aliquot. Store at -20°C long term. Avoid freeze / thaw cycle.
バッファー	pH: 7.00 Preservative: 0.01% Thimerosal (merthiolate) Constituents: 1.21% Tris, 0.75% Glycine, 10% Glycerol (glycerin, glycerine)
精製度	Immunogen affinity purified
ポリ/モノ	ポリクローナル
アイソタイプ	IgG

## アプリケーション

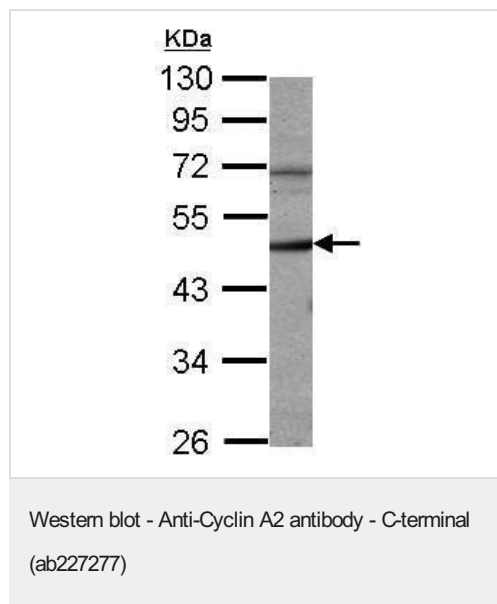
**The Abpromise guarantee** Abpromise保証は、次のテスト済みアプリケーションにおけるab227277の使用に適用されます  
アプリケーションノートには、推奨の開始希釈率がありますが、適切な希釈率につきましてはご確認ください。

アプリケーション	Abreviews	特記事項
WB		1/500 - 1/3000. Predicted molecular weight: 49 kDa.
IHC-P		1/100 - 1/1000.
ICC/IF		1/100 - 1/1000.

## ターゲット情報

機能	Essential for the control of the cell cycle at the G1/S (start) and the G2/M (mitosis) transitions.
配列類似性	Belongs to the cyclin family. Cyclin AB subfamily.
発生段階	Accumulates steadily during G2 and is abruptly destroyed at mitosis.
細胞内局在	Nucleus. Cytoplasm. Cytoplasmic when associated with SCAPER.

## 画像

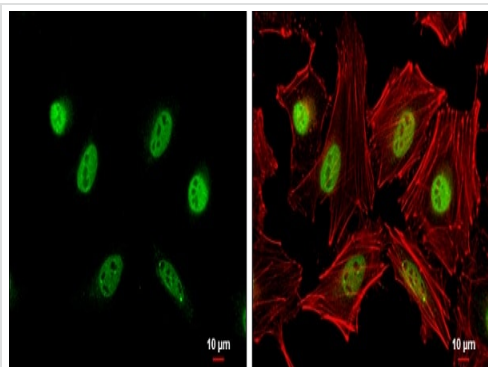


Anti-Cyclin A2 antibody - C-terminal (ab227277) at 1/1000 dilution +  
Mouse brain tissue lysate at 50 µg

Developed using the ECL technique.

**Predicted band size: 49 kDa**

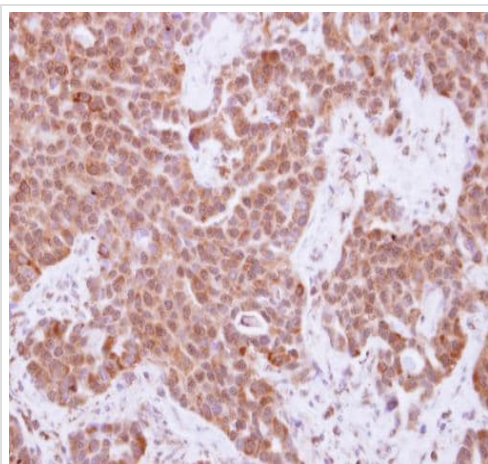
10% SDS-PAGE



Immunocytochemistry/ Immunofluorescence - Anti-Cyclin A2 antibody - C-terminal (ab227277)

HeLa (human epithelial cell line from cervix adenocarcinoma) cells stained for Cyclin A2 (green) using ab227277 at 1/500 dilution in ICC/IF. Cells were fixed in 4% paraformaldehyde at RT for 15 minutes.

Red: Phalloidin cytoskeletal marker.



Immunohistochemistry (Formalin/PFA-fixed paraffin-embedded sections) - Anti-Cyclin A2 antibody - C-terminal (ab227277)

Paraffin-embedded human lung adenocarcinoma tissue stained for Cyclin A2 with ab227277 at 1/250 dilution in immunohistochemical analysis.

**Please note:** All products are "FOR RESEARCH USE ONLY. NOT FOR USE IN DIAGNOSTIC PROCEDURES"

### Our Abpromise to you: Quality guaranteed and expert technical support

---

- Replacement or refund for products not performing as stated on the datasheet
- Valid for 12 months from date of delivery
- Response to your inquiry within 24 hours
  
- We provide support in Chinese, English, French, German, Japanese and Spanish
- Extensive multi-media technical resources to help you
- We investigate all quality concerns to ensure our products perform to the highest standards

If the product does not perform as described on this datasheet, we will offer a refund or replacement. For full details of the Abpromise, please visit <https://www.abcam.co.jp/abpromise> or contact our technical team.

### Terms and conditions

---

- Guarantee only valid for products bought direct from Abcam or one of our authorized distributors