




Cy3 ® Anti-LAMP1 antibody ab67283

★★★★★ [2 Abreviews](#) [9 References](#) [画像数 2](#)

製品の概要

製品名	Cy3 ® Anti-LAMP1 antibody
製品の詳細	Cy3 ® Rabbit polyclonal to LAMP1
由来種	Rabbit
標識	Cy3 ®. Ex: 552nm, Em: 565nm
アプリケーション	適用あり: ICC/IF
種交差性	交差種: Mouse, Human 交差が予測される動物種: Chicken, Cow, Pig, Xenopus laevis, Zebrafish, Woodchuck 
免疫原	Synthetic peptide: GRKRSHAGYQTI conjugated to KLH, corresponding to C terminal amino acids 405-416 of Human LAMP1.  Run BLAST with  Run BLAST with
ポジティブ・コントロール	Human Hela cells, rat NRK cells and mouse 3T3 cells.
特記事項	Molar Ratio (F/P): 3-9.

This product or portions thereof is manufactured under license from Carnegie Mellon University under U.S. Patent Number 5, 268, 486 and related patents. Cy® and CyDye® are trademarks of Cytiva.

The Life Science industry has been in the grips of a reproducibility crisis for a number of years. Abcam is leading the way in addressing this with our range of recombinant monoclonal antibodies and knockout edited cell lines for gold-standard validation. Please check that this product meets your needs before purchasing.

If you have any questions, special requirements or concerns, please send us an inquiry and/or contact our Support team ahead of purchase. Recommended alternatives for this product can be found below, along with publications, customer reviews and Q&As

製品の特性

製品の状態	Liquid
保存方法	Shipped at 4°C. Store at +4°C.
バッファー	pH: 7.40 Preservative: 0.097% Sodium azide

	Constituent: 0.0268% PBS
精製度	Protein A purified
特記事項 (精製)	Purified using an antigen affinity matrix. The conjugate was purified by gel-filtration to remove unbound Cy3 fluorophore.
ポリモノ	ポリクローナル
アイソタイプ	IgG

アプリケーション

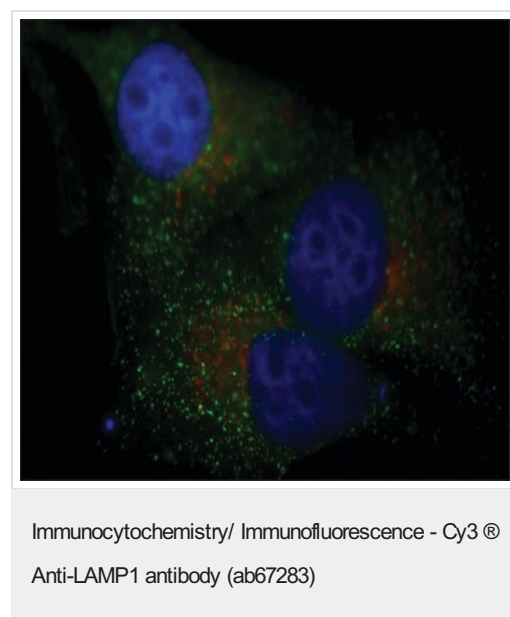
The Abpromise guarantee Abpromise保証は、次のテスト済みアプリケーションにおけるab67283の使用に適用されます
アプリケーションノートには、推奨の開始希釈率がありますが、適切な希釈率につきましてはご確認ください。

アプリケーション	Abreviews	特記事項
ICC/IF	★★★★★ (2)	Use a concentration of 1 - 2 µg/ml.

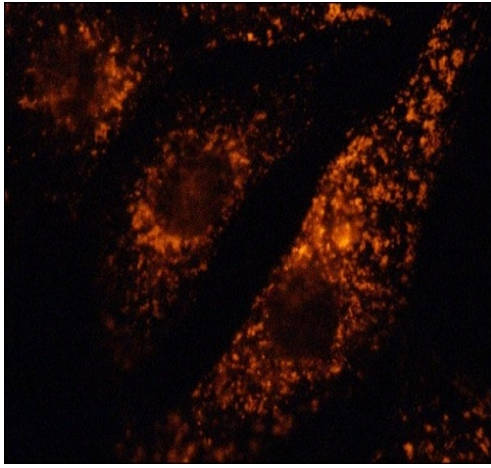
ターゲット情報

機能	Presents carbohydrate ligands to selectins. Also implicated in tumor cell metastasis.
配列類似性	Belongs to the LAMP family.
翻訳後修飾	O- and N-glycosylated; some of the 18 N-linked glycans are polylactosaminoglycans.
細胞内局在	Cell membrane. Endosome membrane. Lysosome membrane. This protein shuttles between lysosomes, endosomes, and the plasma membrane.

画像



Ab67283 staining LAMP1 in HeLa cells by ICC/IF (Immunocytochemistry/Immunofluorescence). Cells were fixed with 4% paraformaldehyde and permeabilized with 0.4% saponin. Rabbit Anti-PMP70, Atto 488 Conjugate (peroxisomes stained in green) and 2 µg/mL Rabbit Anti-LAMP1, Cy3 Conjugate (ab67283) (lysosomes stained in red). Cells were counterstained with DAPI (blue) to stain nuclei.



Immunocytochemistry/ Immunofluorescence - Cy3 ®
Anti-LAMP1 antibody (ab67283)

Ab67283 (2µg) staining LAMP1 in NIH-3T3 cells by ICC/IF (Immunocytochemistry/Immunofluorescence). Cells were fixed with 4% paraformaldehyde.

Please note: All products are "FOR RESEARCH USE ONLY. NOT FOR USE IN DIAGNOSTIC PROCEDURES"

Our Abpromise to you: Quality guaranteed and expert technical support

- Replacement or refund for products not performing as stated on the datasheet
- Valid for 12 months from date of delivery
- Response to your inquiry within 24 hours
- We provide support in Chinese, English, French, German, Japanese and Spanish
- Extensive multi-media technical resources to help you
- We investigate all quality concerns to ensure our products perform to the highest standards

If the product does not perform as described on this datasheet, we will offer a refund or replacement. For full details of the Abpromise, please visit <https://www.abcam.co.jp/abpromise> or contact our technical team.

Terms and conditions

- Guarantee only valid for products bought direct from Abcam or one of our authorized distributors