

Anti-CXCR3 antibody - C-terminal ab181013

[2 References](#) [画像数 2](#)

製品の概要

製品名	Anti-CXCR3 antibody - C-terminal
製品の詳細	Rabbit polyclonal to CXCR3 - C-terminal
由来種	Rabbit
特異性	At least two isoforms of CXCR3 are known to exist and ab181013 will detect both isoforms.
アプリケーション	適用あり: ICC/IF, WB
種交差性	交差種: Human
免疫原	Synthetic peptide corresponding to Human CXCR3 (C terminal). 19 amino acid peptide. Database link: P49682-2
ポジティブ・コントロール	WB: HepG2 cell lysate. ICC: HepG2 cells
特記事項	<p>The Life Science industry has been in the grips of a reproducibility crisis for a number of years. Abcam is leading the way in addressing this with our range of recombinant monoclonal antibodies and knockout edited cell lines for gold-standard validation. Please check that this product meets your needs before purchasing.</p> <p>If you have any questions, special requirements or concerns, please send us an inquiry and/or contact our Support team ahead of purchase. Recommended alternatives for this product can be found below, along with publications, customer reviews and Q&As</p>

製品の特性

製品の状態	Liquid
保存方法	Shipped at 4°C. Store at +4°C short term (1-2 weeks). Upon delivery aliquot. Store at -20°C long term. Avoid freeze / thaw cycle.
バッファー	pH: 7.2 Preservative: 0.02% Sodium azide Constituent: 99% PBS
精製度	Immunogen affinity purified
ポリ/モノ	ポリクローナル
アイソタイプ	IgG

アプリケーション

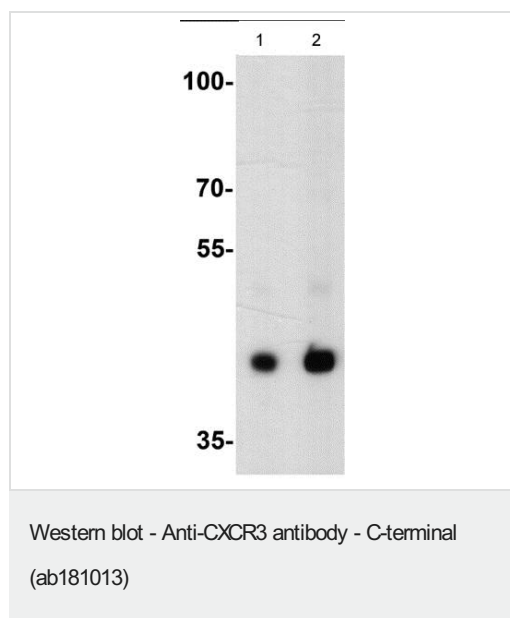
The Abpromise guarantee **Abpromise保証は、次のテスト済みアプリケーションにおけるab181013の使用に適用されます**
 アプリケーションノートには、推奨の開始希釈率がありますが、適切な希釈率につきましてはご検討ください。

アプリケーション	Abreviews	特記事項
ICC/IF		Use a concentration of 5 - 20 µg/ml.
WB		Use a concentration of 1 - 2 µg/ml. Detects a band of approximately 43 kDa (predicted molecular weight: 46 kDa).

ターゲット情報

機能	Receptor for CXCL9, CXCL10 and CXCL11 and mediates the proliferation of human mesangial cells (HMC). Isoform 2 is a receptor for CXCL4 and also mediates the inhibitory activities of CXCL9, CXCL10 and CXCL11 on the growth of human microvascular endothelial cells (HMVEC). May play a role in angiogenesis. Isoform 3 mediates the activity of CXCL11.
組織特異性	Isoform 1 and isoform 2 are mainly expressed in heart, kidney, liver and skeletal muscle. Isoform 1 is also expressed in placenta.
配列類似性	Belongs to the G-protein coupled receptor 1 family.
細胞内局在	Cell membrane.

画像



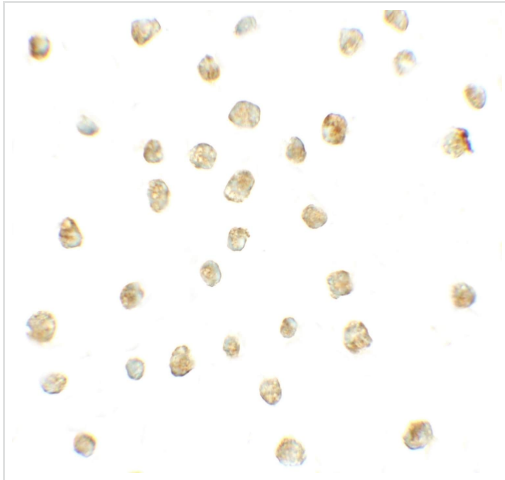
Lane 1 : Anti-CXCR3 antibody - C-terminal (ab181013) at 1 µg/ml

Lane 2 : Anti-CXCR3 antibody - C-terminal (ab181013) at 2 µg/ml

All lanes : HepG2 cell lysate

Lysates/proteins at 15 µg per lane.

Predicted band size: 46 kDa



Immunocytochemistry analysis of HepG2 cells labeling CXCR3 using ab181013 at 5 µg/ml.

Immunocytochemistry/ Immunofluorescence - Anti-CXCR3 antibody - C-terminal (ab181013)

Please note: All products are "FOR RESEARCH USE ONLY. NOT FOR USE IN DIAGNOSTIC PROCEDURES"

Our Abpromise to you: Quality guaranteed and expert technical support

- Replacement or refund for products not performing as stated on the datasheet
- Valid for 12 months from date of delivery
- Response to your inquiry within 24 hours
- We provide support in Chinese, English, French, German, Japanese and Spanish
- Extensive multi-media technical resources to help you
- We investigate all quality concerns to ensure our products perform to the highest standards

If the product does not perform as described on this datasheet, we will offer a refund or replacement. For full details of the Abpromise, please visit <https://www.abcam.co.jp/abpromise> or contact our technical team.

Terms and conditions

- Guarantee only valid for products bought direct from Abcam or one of our authorized distributors