

Anti-CXCL5 antibody ab9802

★★★★★ [2 Abreviews](#) [10 References](#) [画像数 1](#)

製品の概要

製品名	Anti-CXCL5 antibody
製品の詳細	Rabbit polyclonal to CXCL5
由来種	Rabbit
アプリケーション	適用あり: Sandwich ELISA, WB
種交差性	交差種: Human
免疫原	Recombinant full length protein corresponding to Human CXCL5. Highly pure (>98%) recombinant hENA-78 (Human Epithelial Neutrophil Activating Peptide-78). Database link: P42830
特記事項	Although some customers have been successful in IHC we no longer batch test in this application. The Life Science industry has been in the grips of a reproducibility crisis for a number of years. Abcam is leading the way in addressing this with our range of recombinant monoclonal antibodies and knockout edited cell lines for gold-standard validation. Please check that this product meets your needs before purchasing. If you have any questions, special requirements or concerns, please send us an inquiry and/or contact our Support team ahead of purchase. Recommended alternatives for this product can be found below, along with publications, customer reviews and Q&As

製品の特性

製品の状態	Lyophilized:Reconstitute with 200µl of sterile water. Please note that if you receive this product in liquid form it has already been reconstituted as described and no further reconstitution is necessary.
保存方法	Shipped at 4°C. Store at +4°C short term (1-2 weeks). Upon delivery aliquot. Store at -20°C long term.
バッファー	No preservative, sterile filtered
精製度	Immunogen affinity purified
ポリ/モノ	ポリクローナル
アイソタイプ	unknown
軽鎖の種類	unknown

アプリケーション

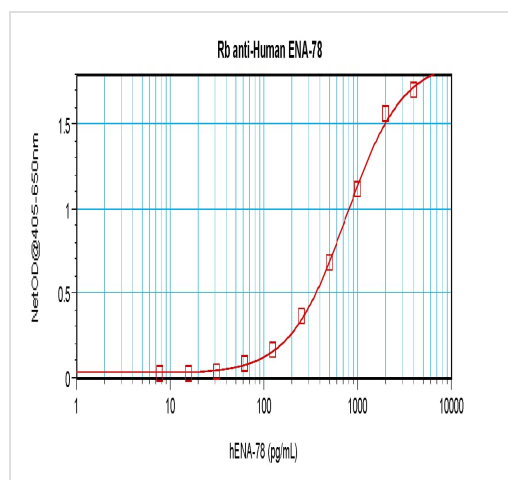
The Abpromise guarantee **Abpromise保証は、次のテスト済みアプリケーションにおけるab9802の使用に適用されます**
アプリケーションノートには、推奨の開始希釈率がありますが、適切な希釈率につきましてはご検討ください。

アプリケーション	Abreviews	特記事項
Sandwich ELISA		Use a concentration of 0.5 - 2 µg/ml. To detect CXCL5 by sandwich ELISA (using 100 µl/well antibody solution) a concentration of 0.5 - 2.0 µg/ml of this antibody is required. This antigen affinity purified antibody, in conjunction with ab271281 as a detection antibody, allows the detection of at least 0.2 - 0.4 ng/well of recombinant CXCL5.
WB		Use a concentration of 0.1 - 0.2 µg/ml. Predicted molecular weight: 12 kDa. To detect hENA-78 by Western Blot analysis this antibody can be used at a concentration of 0.1-0.2 µg/ml. Used in conjunction with compatible secondary reagents the detection limit for recombinant hENA-78 is 1.5-3.0 ng/lane, under either reducing or non-reducing conditions.

ターゲット情報

機能	Involved in neutrophil activation. In vitro, ENA-78(8-78) and ENA-78(9-78) show a threefold higher chemotactic activity for neutrophil granulocytes.
配列類似性	Belongs to the intercrine alpha (chemokine CxC) family.
翻訳後修飾	N-terminal processed forms ENA-78(8-78) and ENA-78(9-78) are produced by proteolytic cleavage after secretion from peripheral blood monocytes.
細胞内局在	Secreted.

画像



ab9802 detecting CXCL5 in sandwich ELISA

Sandwich ELISA - Anti-CXCL5 antibody (ab9802)

Please note: All products are "FOR RESEARCH USE ONLY. NOT FOR USE IN DIAGNOSTIC PROCEDURES"

Our Abpromise to you: Quality guaranteed and expert technical support

- Replacement or refund for products not performing as stated on the datasheet
- Valid for 12 months from date of delivery
- Response to your inquiry within 24 hours

- We provide support in Chinese, English, French, German, Japanese and Spanish
- Extensive multi-media technical resources to help you
- We investigate all quality concerns to ensure our products perform to the highest standards

If the product does not perform as described on this datasheet, we will offer a refund or replacement. For full details of the Abpromise, please visit <https://www.abcam.co.jp/abpromise> or contact our technical team.

Terms and conditions

- Guarantee only valid for products bought direct from Abcam or one of our authorized distributors