

# Anti-CXCL13 antibody ab227801

## 1 References [画像数 2](#)

医薬用外毒物

### 製品の概要

製品名	Anti-CXCL13 antibody
製品の詳細	Rabbit polyclonal to CXCL13
由来種	Rabbit
アプリケーション	<b>適用あり:</b> WB, ELISA
種交差性	<b>交差種:</b> Human
免疫原	Recombinant full length protein corresponding to Human BCA1 aa 1 to the C-terminus. Database link: <a href="#">O43927</a>
ポジティブ・コントロール	WB: HeLa whole cell lysate.
特記事項	<p>The Life Science industry has been in the grips of a reproducibility crisis for a number of years. Abcam is leading the way in addressing this with our range of recombinant monoclonal antibodies and knockout edited cell lines for gold-standard validation. Please check that this product meets your needs before purchasing.</p> <p>If you have any questions, special requirements or concerns, please send us an inquiry and/or contact our Support team ahead of purchase. Recommended alternatives for this product can be found below, along with publications, customer reviews and Q&amp;As</p>

[Run BLAST with](#)

[Run BLAST with](#)

### 製品の特性

製品の状態	Lyophilized: 0.2 ml of distilled water will yield a concentration of 500 ug/ml. Can be stored for up to one month at 4°C after reconstitution.
保存方法	Shipped at 4°C. Upon delivery aliquot. Store at -20°C long term. Avoid freeze / thaw cycle. Stable for 12 months at -20°C.
バッファー	Preservative: 0.05% Sodium azide Constituents: 0.9% Sodium chloride, 0.2% Dibasic monohydrogen sodium phosphate, 4% Trehalose
精製度	Immunogen affinity purified
ポリ/モノ	ポリクローナル
アイソタイプ	IgG

## アプリケーション

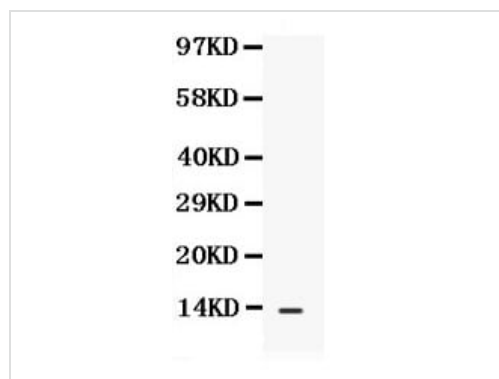
The Abpromise guarantee **Abpromise保証は、次のテスト済みアプリケーションにおけるab227801の使用に適用されます**  
アプリケーションノートには、推奨の開始希釈率がありますが、適切な希釈率につきましてはご検討ください。

アプリケーション	Abreviews	特記事項
WB		Use a concentration of 0.1 - 0.5 µg/ml. Predicted molecular weight: 13 kDa.
ELISA		Use a concentration of 1 - 5 µg/ml. Capture antibody.

## ターゲット情報

機能	Chemotactic for B-lymphocytes but not for T-lymphocytes, monocytes and neutrophils. Does not induce calcium release in B-lymphocytes. Binds to BLR1/CXCR5.
組織特異性	Highest levels in liver, followed by spleen, lymph node, appendix and stomach. Low levels in salivary gland, mammary gland and fetal spleen.
配列類似性	Belongs to the intercrine alpha (chemokine CxC) family.
細胞内局在	Secreted.

## 画像

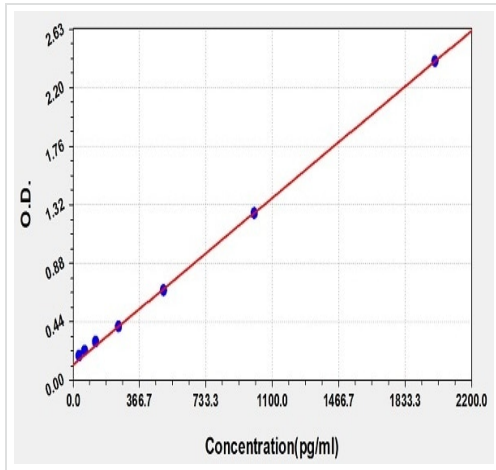


Western blot - Anti-CXCL13 antibody (ab227801)

Anti-CXCL13 antibody (ab227801) at 0.5 µg/ml + HeLa (human epithelial cell line from cervix adenocarcinoma) whole cell lysate at 40 µg

**Predicted band size:** 13 kDa

**Observed band size:** 13 kDa



ELISA using ab227801 as capture antibody at 4 µg/ml.

ELISA - Anti-CXCL13 antibody (ab227801)

**Please note:** All products are "FOR RESEARCH USE ONLY. NOT FOR USE IN DIAGNOSTIC PROCEDURES"

### Our Abpromise to you: Quality guaranteed and expert technical support

---

- Replacement or refund for products not performing as stated on the datasheet
- Valid for 12 months from date of delivery
- Response to your inquiry within 24 hours
- We provide support in Chinese, English, French, German, Japanese and Spanish
- Extensive multi-media technical resources to help you
- We investigate all quality concerns to ensure our products perform to the highest standards

If the product does not perform as described on this datasheet, we will offer a refund or replacement. For full details of the Abpromise, please visit <https://www.abcam.co.jp/abpromise> or contact our technical team.

### Terms and conditions

---

- Guarantee only valid for products bought direct from Abcam or one of our authorized distributors