

Anti-CTNNBL1 antibody [EP2669Y] ab76243

リコンビナント RabMAb

3 References [画像数 4](#)

製品の概要

製品名	Anti-CTNNBL1 antibody [EP2669Y]
製品の詳細	Rabbit monoclonal [EP2669Y] to CTNNBL1
由来種	Rabbit
アプリケーション	適用あり: Flow Cyt, WB, IHC-P, ICC/IF
種交差性	交差種: Human
免疫原	Synthetic peptide. This information is proprietary to Abcam and/or its suppliers.
ポジティブ・コントロール	WB: HeLa cell lysate, MCF7 cell lysate IHC-P: Human breast tissue ICC/IF: HeLa cells Flow Cyt: HeLa cells
特記事項	<p>This product has switched from a hybridoma to recombinant production method on 18th September 2023</p> <p>This product is a recombinant monoclonal antibody, which offers several advantages including:</p> <ul style="list-style-type: none"> - High batch-to-batch consistency and reproducibility - Improved sensitivity and specificity - Long-term security of supply - Animal-free production <p>For more information see here.</p> <p>Our RabMAb[®] technology is a patented hybridoma-based technology for making rabbit monoclonal antibodies. For details on our patents, please refer to RabMAb[®] patents.</p> <p>Mouse, Rat: We have preliminary internal testing data to indicate this antibody may not react with these species. Please contact us for more information.</p>

製品の特性

製品の状態	Liquid
保存方法	Shipped at 4°C. Upon delivery aliquot and store at -20°C. Avoid repeated freeze / thaw cycles.
バッファー	<p>pH: 7.20</p> <p>Preservative: 0.01% Sodium azide</p> <p>Constituents: 0.05% BSA, 40% Glycerol (glycerin, glycerine), 59% PBS</p>
精製度	Protein A purified

ポリ/モノ	モノクローナル
クローン名	EP2669Y
アイソタイプ	IgG

アプリケーション

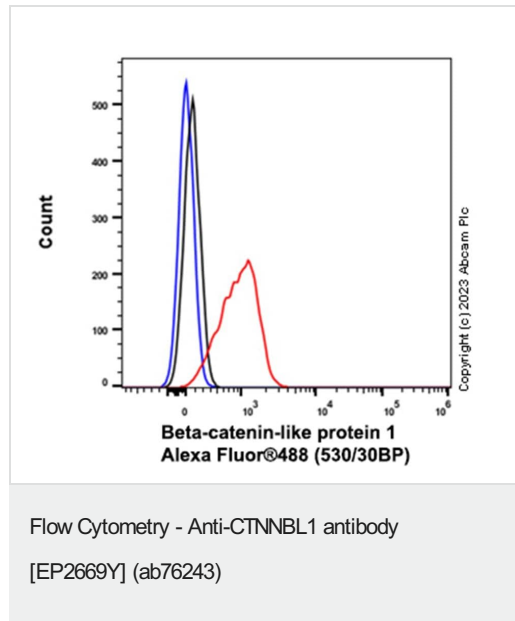
The Abpromise guarantee **Abpromise保証は、**次のテスト済みアプリケーションにおけるab76243の使用に適用されます
 アプリケーションノートには、推奨の開始希釈率がありますが、適切な希釈率につきましてはご検討ください。

アプリケーション	Abreviews	特記事項
Flow Cyt		1/20.
WB		1/5000. Predicted molecular weight: 65 kDa. For the unpurified version use at 1/2000 to 1/5000 dilution
IHC-P		1/100. Perform heat mediated antigen retrieval before commencing with IHC staining protocol. For the unpurified version use at 1/100 to 1/250 dilution
ICC/IF		1/50.

ターゲット情報

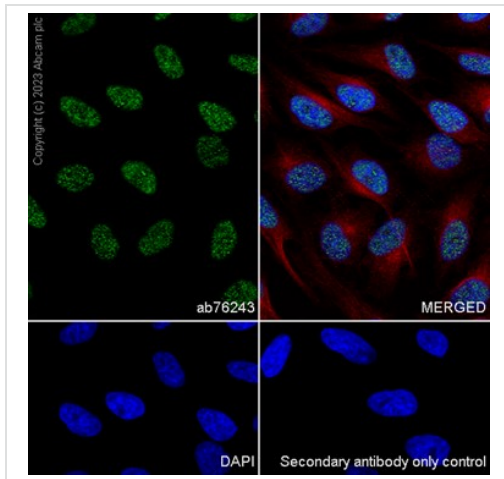
機能	Induces apoptosis in CHO cells.
組織特異性	Widely expressed with highest levels in skeletal muscle, placenta, heart, spleen, testis and thyroid.
細胞内局在	Nucleus.

画像



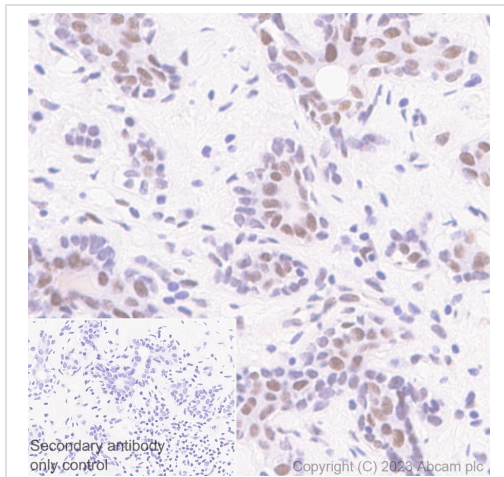
Flow cytometry analysis showing positive staining in HeLa cells using ab76243 at 1:20 dilution, 5 µg/mL.

Cells were fixed with 100µl 4% PFA for 10 min at RT, then permeabilized with 100µl 90% methanol for 30 min (-20° C) followed by blocking with 10% goat serum for 1h at room temperature. Incubate ab76243 for 30 min at room temperature (RT) and then incubate Goat Anti-Rabbit IgG H&L (Alexa Fluor® 488) ([ab150081](#)) for 30 min at room temperature.



Immunocytochemistry - Anti-CTNNBL1 antibody
[EP2669Y] (ab76243)

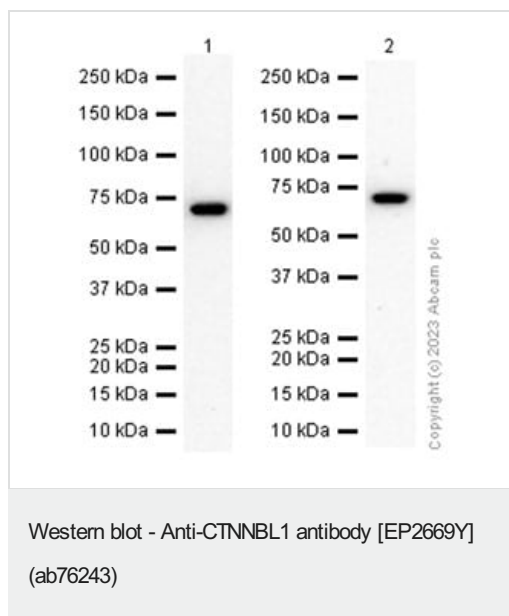
HeLa cells were fixed in 4% PFA and permeabilized with 0.1% Triton X-100. Primary antibody, ab76243 at 1:50 was incubated overnight at 4° C, followed by Goat Anti-Rabbit IgG H&L (Alexa Fluor® 488) preadsorbed (**ab150081**) at 1/1000 dilution at RT for 45 min. Alexa Fluor® 594 Anti-alpha Tubulin antibody [DM1A] - Microtubule Marker (**ab195889**) at 1/200 dilution, was co-incubated with ab76243 overnight at 4° C. Nucleus were visualized using DAPI.



Immunohistochemistry (Formalin/PFA-fixed paraffin-embedded sections) - Anti-CTNNBL1 antibody
[EP2669Y] (ab76243)

Immunohistochemical analysis of human breast tissue staining CTNNBL1 with ab76243 at 1/100 dilution.

The human breast sections were performed by LeicaDS9800 (Bond™ Polymer Refine Detection). The sections were using Heat mediated antigen retrieval with Tris-EDTA buffer (pH 9.0, epitope retrieval solution2) for 20 mins, then labeling ab76243 at 1/100 dilution for 30 mins at room temperature. Counterstained with hematoxylin. The immunostaining was performed on a Leica Biosystems BOND® RX instrument.



All lanes : Anti-CTNNB1 antibody [EP2669Y] (ab76243) at 1/5000 dilution

Lane 1 : HeLa (Human cervix adenocarcinoma epithelial cell) whole lysate

Lane 2 : MCF7 (Human breast adenocarcinoma epithelial cell) whole lysate

Lysates/proteins at 15 µg per lane.

Predicted band size: 65 kDa

Exposure time: 180 seconds

Blocking and diluting buffer and concentration: 5% NFDm/TBST,

Primary antibody: incubated for 1h at room temperature.

Secondary antibody: incubated for 1h at 1:20,000 at room temperature ([ab97051](#))

Please note: All products are "FOR RESEARCH USE ONLY. NOT FOR USE IN DIAGNOSTIC PROCEDURES"

Our Abpromise to you: Quality guaranteed and expert technical support

- Replacement or refund for products not performing as stated on the datasheet
- Valid for 12 months from date of delivery
- Response to your inquiry within 24 hours
- We provide support in Chinese, English, French, German, Japanese and Spanish
- Extensive multi-media technical resources to help you
- We investigate all quality concerns to ensure our products perform to the highest standards

If the product does not perform as described on this datasheet, we will offer a refund or replacement. For full details of the Abpromise, please visit <https://www.abcam.co.jp/abpromise> or contact our technical team.

Terms and conditions

- Guarantee only valid for products bought direct from Abcam or one of our authorized distributors