


Anti-Ctip1/BCL-11A antibody [EPR14943-44] ab191401

KO 評価済 リコンビナント RabMAb

5 References 画像数 9

製品の概要

製品名	Anti-Ctip1/BCL-11A antibody [EPR14943-44]
製品の詳細	Rabbit monoclonal [EPR14943-44] to Ctip1/BCL-11A
由来種	Rabbit
特異性	Some optimisation may be required for detection of the target protein due to low levels of endogenous expression in some samples. Please see images below for suitable positive controls.
アプリケーション	適用あり: WB, ICC/IF, IHC-P, Flow Cyt (Intra), IP
種交差性	交差種: Rat, Human 交差が予測される動物種: Mouse 
免疫原	Recombinant fragment. This information is proprietary to Abcam and/or its suppliers.
ポジティブ・コントロール	WB: Raji, Jurkat and 293 cell lysates; IHC-P: Human tonsil and rat spleen tissues; rat C6 cells. IP: Raji whole cell lysate Flow Cyt (intra): Jurkat cells.
特記事項	This product is a recombinant monoclonal antibody, which offers several advantages including: <ul style="list-style-type: none">- High batch-to-batch consistency and reproducibility- Improved sensitivity and specificity- Long-term security of supply- Animal-free production For more information see here . Our RabMAb [®] technology is a patented hybridoma-based technology for making rabbit monoclonal antibodies. For details on our patents, please refer to RabMAb[®] patents .

製品の特性

製品の状態	Liquid
保存方法	Shipped at 4°C. Store at +4°C short term (1-2 weeks). Upon delivery aliquot. Store at -20°C long term. Avoid freeze / thaw cycle.
バッファー	pH: 7.2 Preservative: 0.01% Sodium azide Constituents: 59% PBS, 40% Glycerol (glycerin, glycerine), 0.05% BSA

精製度	Protein A purified
ポリ/モノ	モノクローナル
クローン名	EPR14943-44
アイソタイプ	IgG

アプリケーション

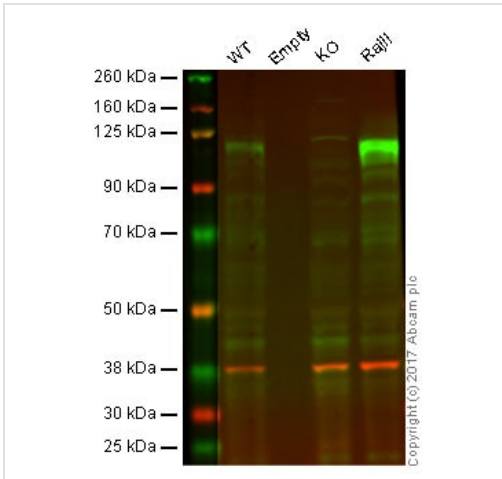
The Abpromise guarantee Abpromise保証は、次のテスト済みアプリケーションにおけるab191401の使用に適用されます
アプリケーションノートには、推奨の開始希釈率がありますが、適切な希釈率につきましてはご検討ください。

アプリケーション	Abreviews	特記事項
WB		1/10000 - 1/50000. Detects a band of approximately 120 kDa (predicted molecular weight: 91 kDa).
ICC/IF		1/450.
IHC-P		1/100. Perform heat mediated antigen retrieval with Tris/EDTA buffer pH 9.0 before commencing with IHC staining protocol.
Flow Cyt (Intra)		1/200. ab172730 - Rabbit monoclonal IgG, is suitable for use as an isotype control with this antibody.
IP		1/50.

ターゲット情報

機能	Functions as a myeloid and B-cell proto-oncogene. May play important roles in leukemogenesis and hematopoiesis. An essential factor in lymphopoiesis, is required for B-cell formation in fetal liver. May function as a modulator of the transcriptional repression activity of ARP1.
組織特異性	Expressed at high levels in brain, spleen thymus, bone marrow and testis. Expressed in CD34-positive myeloid precursor cells, B-cells, monocytes and megakaryocytes. Expression is tightly regulated during B-cell development.
関連疾患	Note=Chromosomal aberrations involving BCL11A may be a cause of lymphoid malignancies. Translocation t(2;14)(p13;q32.3) causes BCL11A deregulation and amplification.
配列類似性	Contains 6 C2H2-type zinc fingers.
翻訳後修飾	Sumoylated by SUMO1.
細胞内局在	Cytoplasm. Nucleus. Associates with the nuclear body. Colocalizes with SUMO1 and SENP2 in nuclear speckles.

画像



Western blot - Anti-Ctip1/BCL-11A antibody
[EPR14943-44] (ab191401)

Lane 1: Wild type HAP1 whole cell lysate (20 µg)

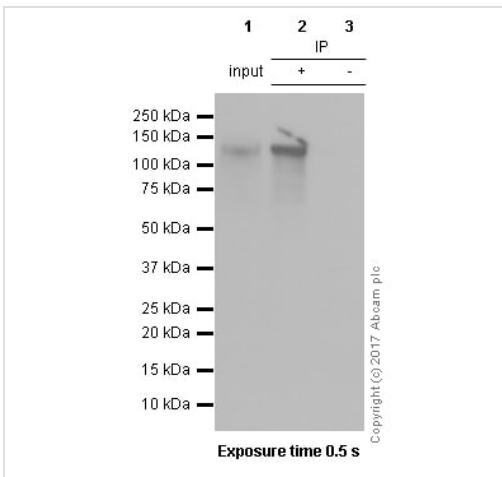
Lane 2: Empty

Lane 3: BCL11A (Ctip1) knockout HAP1 whole cell lysate (20 µg)

Lane 4: Raji whole cell lysate (20 µg)

Lanes 1 - 4: Merged signal (red and green). Green - ab191401 observed at 91 kDa. Red - loading control, **ab8245**, observed at 37 kDa.

ab191401 was shown to recognize BCL11A (Ctip1) in wild type cells as signal was lost at the expected MW in BCL11A (Ctip1) knockout cells. Additional cross-reactive bands were observed in the wild-type and knockout cells. Wild-type and BCL11A (Ctip1) knockout samples were subjected to SDS-PAGE. Ab191401 and **ab8245** (Mouse anti-GAPDH loading control) were incubated overnight at 4°C at 1000 dilution and 1/10000 dilution respectively. Blots were developed with Goat anti-Rabbit IgG H&L (IRDye® 800CW) preabsorbed **ab216773** and Goat anti-Mouse IgG H&L (IRDye® 680RD) preabsorbed **ab216776** secondary antibodies at 1/10000 dilution for 1 hour at room temperature before imaging.



Immunoprecipitation - Anti-Ctip1/BCL-11A antibody
[EPR14943-44] (ab191401)

ab191401 (purified) at 1/50 dilution (2.1 µg/mL)

immunoprecipitating Ctip1/BCL-11A in Raji whole cell lysate.

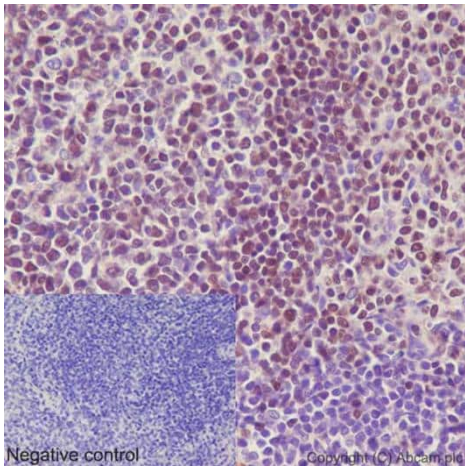
Lane 1 (input): Raji (Human Burkitt's lymphoma B lymphocyte) whole cell lysate 10µg

Lane 2 (+): ab191401 & Raji whole cell lysate

Lane 3 (-): Rabbit monoclonal IgG (**ab172730**) instead of ab191401 in Raji whole cell lysate

For western blotting, ab191401 at 1/500 dilution (2.1 µg/mL) and VeriBlot for IP Detection Reagent (HRP) (**ab131366**) was used for detection at 1/1000 dilution.

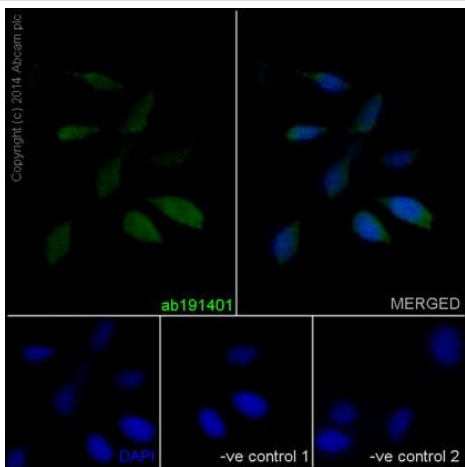
Blocking and diluting buffer: 5% NFDM /TBST .



Immunohistochemistry (Formalin/PFA-fixed paraffin-embedded sections) - Anti-Ctip1/BCL-11A antibody [EPR14943-44] (ab191401)

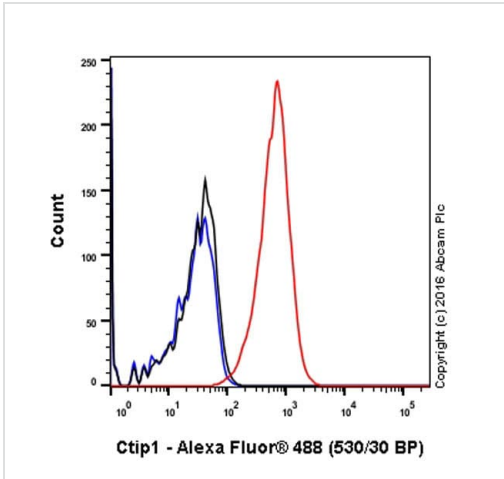
Immunohistochemical analysis of paraffin-embedded, rat spleen tissue labeling Ctip1/BCL-11A with ab191401 at a 1/100 dilution (19 µg/ml). Counter stained with hematoxylin. In the negative control PBS was used instead of primary antibody.

Perform heat mediated antigen retrieval with Tris/EDTA buffer pH 9.0 before commencing with IHC staining protocol.



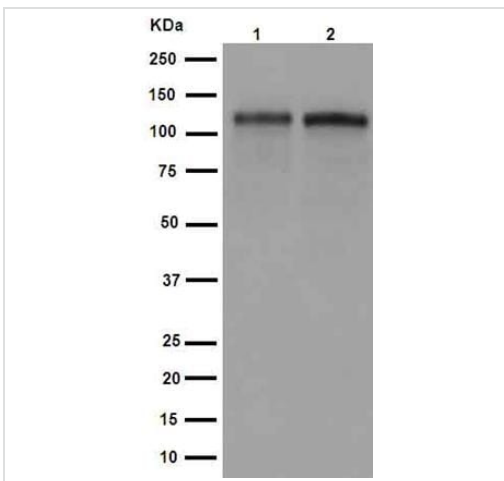
Immunocytochemistry/ Immunofluorescence - Anti-Ctip1/BCL-11A antibody [EPR14943-44] (ab191401)

Immunofluorescence analysis of, paraformaldehyde-fixed, rat C6 cells labeling Ctip1/BCL-11A with ab191401 at a 1/450 dilution (4 µg/ml). As secondary antibody goat anti-rabbit IgG (Alexa Fluor®488) **ab150077** was used at a 1/200 dilution. In blue DAPI staining. In the negative controls cells were treated with anti-BCL11A at a 1/450 dilution as primary antibody and goat anti-mouse IgG (Alexa Fluor®594) at a 1/400 dilution as secondary antibody.



Flow Cytometry (Intracellular) - Anti-Ctip1/BCL-11A antibody [EPR14943-44] (ab191401)

Intracellular Flow Cytometry analysis of Jurkat (human acute T cell leukemia) labelling Ctip1/BCL-11A with purified ab191401 at 1/200 (red). Cells were fixed with 4% paraformaldehyde and permeabilised with 90% methanol. Alexa Fluor® 488 goat anti-rabbit IgG (1/2000) was used as the secondary antibody. Black - Isotype control, rabbit monoclonal IgG. Blue - Unlabelled control, cells without incubation with primary and secondary antibodies.



Western blot - Anti-Ctip1/BCL-11A antibody [EPR14943-44] (ab191401)

All lanes : Anti-Ctip1/BCL-11A antibody [EPR14943-44] (ab191401) at 1/50000 dilution

Lane 1 : Raji cell lysate

Lane 2 : Jurkat cell lysate

Lysates/proteins at 20 µg per lane.

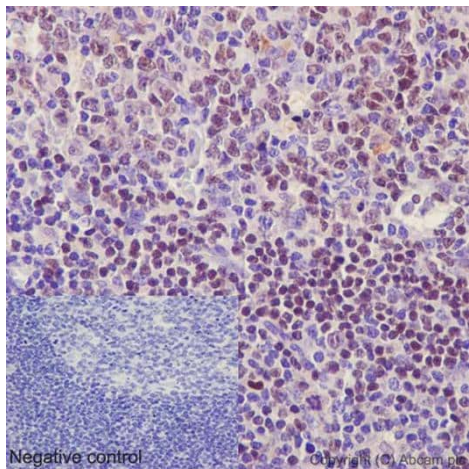
Secondary

All lanes : goat anti-rabbit IgG, (H+L), peroxidase conjugated at 1/1000 dilution

Developed using the ECL technique.

Predicted band size: 91 kDa

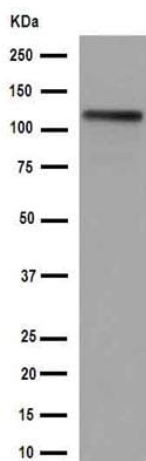
Observed band size: 120 kDa



Immunohistochemistry (Formalin/PFA-fixed paraffin-embedded sections) - Anti-Ctip1/BCL-11A antibody [EPR14943-44] (ab191401)

Immunohistochemical analysis of paraffin-embedded, Human tonsil tissue labeling Ctip1/BCL-11A with ab191401 at a 1/100 dilution (19 µg/ml). Counter stained with hematoxylin. In the negative control PBS was used instead of primary antibody.

Perform heat mediated antigen retrieval with Tris/EDTA buffer pH 9.0 before commencing with IHC staining protocol.



Western blot - Anti-Ctip1/BCL-11A antibody [EPR14943-44] (ab191401)

Anti-Ctip1/BCL-11A antibody [EPR14943-44] (ab191401) at 1/50000 dilution + 293 cell lysate at 10 µg

Secondary





goat anti-rabbit IgG, (H+L), peroxidase conjugated at 1/1000 dilution

Developed using the ECL technique.

Predicted band size: 91 kDa

Observed band size: 120 kDa

Why choose a recombinant antibody?

 Research with confidence Consistent and reproducible results	 Long-term and scalable supply Recombinant technology
 Success from the first experiment Confirmed specificity	 Ethical standards compliant Animal-free production

Anti-Ctip1/BCL-11A antibody [EPR14943-44]
(ab191401)

Please note: All products are "FOR RESEARCH USE ONLY. NOT FOR USE IN DIAGNOSTIC PROCEDURES"

Our Abpromise to you: Quality guaranteed and expert technical support

- Replacement or refund for products not performing as stated on the datasheet
- Valid for 12 months from date of delivery
- Response to your inquiry within 24 hours
- We provide support in Chinese, English, French, German, Japanese and Spanish
- Extensive multi-media technical resources to help you
- We investigate all quality concerns to ensure our products perform to the highest standards

If the product does not perform as described on this datasheet, we will offer a refund or replacement. For full details of the Abpromise, please visit <https://www.abcam.co.jp/abpromise> or contact our technical team.

Terms and conditions

- Guarantee only valid for products bought direct from Abcam or one of our authorized distributors