

Anti-CTBP2 antibody [EPR7611(B)] ab128871

リコンビナント RabMAb

10 References 画像数 8

製品の概要

製品名	Anti-CTBP2 antibody [EPR7611(B)]
製品の詳細	Rabbit monoclonal [EPR7611(B)] to CTBP2
由来種	Rabbit
アプリケーション	適用あり: WB, IHC-P, ICC/IF, Flow Cyt (Intra)
種交差性	交差種: Mouse, Rat, Human
免疫原	Synthetic peptide. This information is proprietary to Abcam and/or its suppliers.
ポジティブ・コントロール	WB: HeLa and SK-BR-3 cell lysates. Mouse brain and Rat brain tissue lysates. Flow Cyt (Intra): MCF7 cells. ICC/IF: SH-SY5Y cells IHC-P: Rat stomach, Mouse stomach, Human ovarian carcinoma, and Human glioma tissues.
特記事項	<p>This product is a recombinant monoclonal antibody, which offers several advantages including:</p> <ul style="list-style-type: none"> - High batch-to-batch consistency and reproducibility - Improved sensitivity and specificity - Long-term security of supply - Animal-free production <p>For more information see here.</p> <p>Our RabMAb[®] technology is a patented hybridoma-based technology for making rabbit monoclonal antibodies. For details on our patents, please refer to RabMAb[®] patents.</p>

製品の特性

製品の状態	Liquid
保存方法	Shipped at 4°C. Store at +4°C short term (1-2 weeks). Upon delivery aliquot. Store at -20°C long term. Avoid freeze / thaw cycle.
バッファー	<p>pH: 7.20</p> <p>Preservative: 0.01% Sodium azide</p> <p>Constituents: 59% PBS, 40% Glycerol (glycerin, glycerine), 0.05% BSA</p>
精製度	Protein A purified
ポリ/モノ	モノクローナル
クローン名	EPR7611(B)

アイソタイプ

IgG

アプリケーション

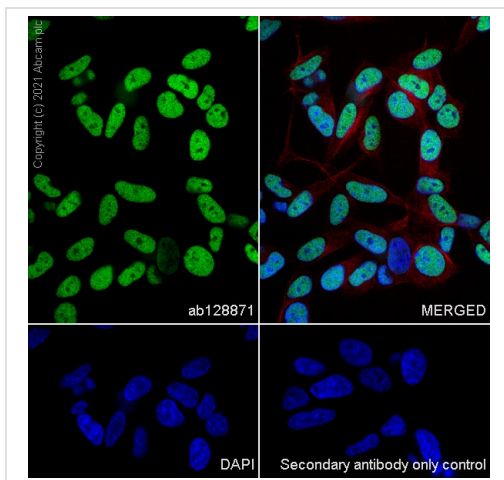
The Abpromise guarantee **Abpromise保証は、**次のテスト済みアプリケーションにおけるab128871の使用に適用されます
アプリケーションノートには、推奨の開始希釈率がありますが、適切な希釈率につきましてはご検討ください。

アプリケーション	Abreviews	特記事項
WB		1/10000 - 1/50000. Detects a band of approximately 49 kDa (predicted molecular weight: 49 kDa).
IHC-P		1/6000. Perform heat mediated antigen retrieval before commencing with IHC staining protocol. For mouse and rat, use at 1:12000. For unpurified, use at 1/250 - 1/500. See <u>IHC antigen retrieval protocols.</u>
ICC/IF		1/50. For unpurified use at 1/100 - 1/250.
Flow Cyt (Intra)		1/20.

ターゲット情報

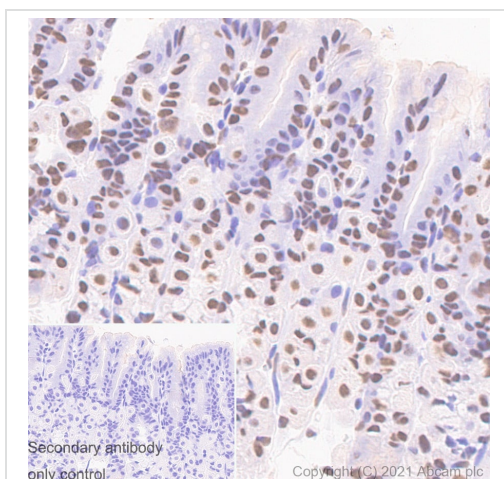
機能	Corepressor targeting diverse transcription regulators. Functions in brown adipose tissue (BAT) differentiation. Isoform 2 probably acts as a scaffold for specialized synapses.
組織特異性	Ubiquitous. Highest levels in heart, skeletal muscle, and pancreas.
配列類似性	Belongs to the D-isomer specific 2-hydroxyacid dehydrogenase family.
翻訳後修飾	Isoform 2 is phosphorylated upon DNA damage, probably by ATM or ATR at Thr-179; Ser-181 and Ser-185. Phosphorylation by HIPK2 on Ser-428 induces proteasomal degradation.
細胞内局在	Nucleus. Cell junction > synapse.

画像



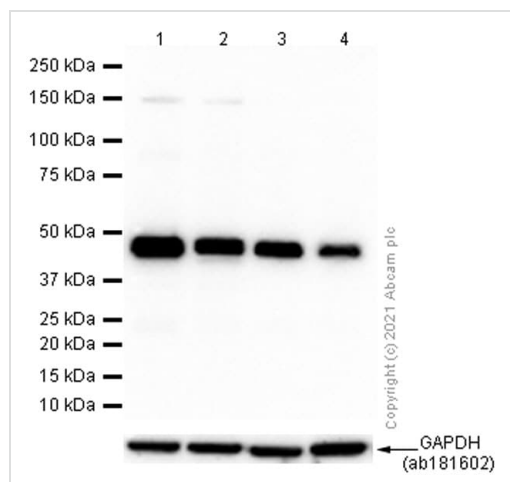
Immunocytochemistry/ Immunofluorescence - Anti-CTBP2 antibody [EPR7611(B)] (ab128871)

Immunocytochemistry analysis of SH-SY5Y (Human neuroblastoma epithelial cell) cells labeling CTBP2 with purified ab128871 at 1:50 dilution (2.5 µg/ml). Cells were fixed in 4% Paraformaldehyde and permeabilized with 0.1% tritonX-100. Cells were counterstained with Anti-alpha Tubulin antibody [DM1A] - Microtubule Marker (Alexa Fluor® 594) at 1/200 dilution (2.5 µg/ml) (**ab195889**) (red). Goat anti-rabbit IgG (Alexa Fluor® 488) (**ab150077**) was used as the secondary antibody at 1:1000 (2 µg/ml) dilution. DAPI (blue) was used as a nuclear counterstain. PBS instead of the primary antibody was used as the secondary antibody only control.



Immunohistochemistry (Formalin/PFA-fixed paraffin-embedded sections) - Anti-CTBP2 antibody [EPR7611(B)] (ab128871)

Immunohistochemistry (Formalin/PFA-fixed paraffin-embedded sections) analysis of mouse stomach tissue sections labeling CTBP2 with purified ab128871 at 1:12000 (0.011 µg/ml). Heat mediated antigen retrieval was performed using Bond™ Epitope Retrieval Solution 2 (pH 9.0). Tissue was counterstained with Hematoxylin. LeicaDS9800 (Bond™ Polymer Refine Detection) was used at 1:0 dilution. PBS instead of the primary antibody was used as the negative control. The immunostaining was performed on a Leica Biosystems BOND® RX instrument.



Western blot - Anti-CTBP2 antibody [EPR7611(B)] (ab128871)

All lanes : Anti-CTBP2 antibody [EPR7611(B)] (ab128871) at 1/10000 dilution (Purified)

Lane 1 : HeLa (Human cervix adenocarcinoma epithelial cell) whole cell lysate

Lane 2 : SK-BR-3 (Human breast adenocarcinoma epithelial cell) whole cell lysate

Lane 3 : Mouse brain lysate

Lane 4 : Rat brain lysate

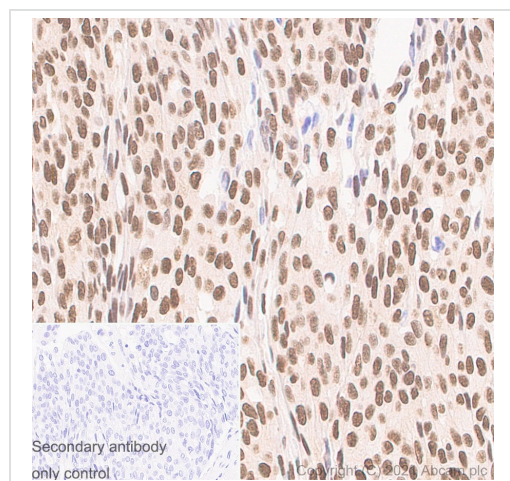
Lysates/proteins at 20 µg per lane.

Secondary

All lanes : Goat Anti-Rabbit IgG H&L (HRP) (**ab97051**) at 1/20000 dilution

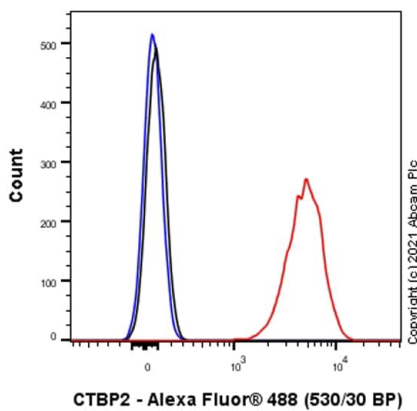
Predicted band size: 49 kDa

Observed band size: 49 kDa



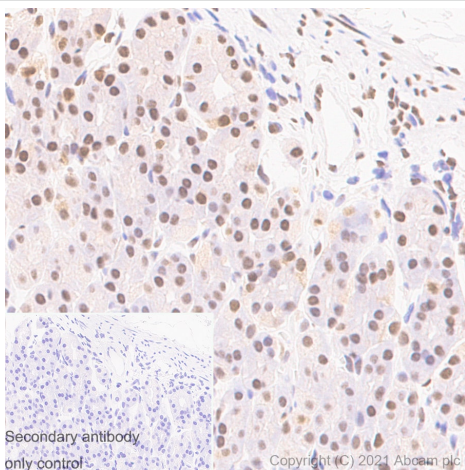
Immunohistochemistry (Formalin/PFA-fixed paraffin-embedded sections) - Anti-CTBP2 antibody [EPR7611(B)] (ab128871)

Immunohistochemistry (Formalin/PFA-fixed paraffin-embedded sections) analysis of human ovarian carcinoma tissue sections labeling CTBP2 with purified ab128871 at 1:6000 (0.021 µg/ml). Heat mediated antigen retrieval was performed using Bond™ Epitope Retrieval Solution 2 (pH 9.0). Tissue was counterstained with Hematoxylin. LeicaDS9800 (Bond™ Polymer Refine Detection) was used at 1:0 dilution. PBS instead of the primary antibody was used as the negative control. The immunostaining was performed on a Leica Biosystems BOND® RX instrument.



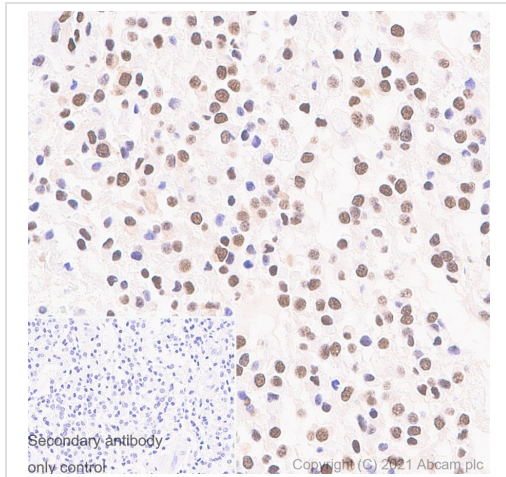
Flow Cytometry (Intracellular) - Anti-CTBP2 antibody
[EPR7611(B)] (ab128871)

Flow Cytometry analysis of MCF7 (Human breast adenocarcinoma epithelial cell) cells labelling CTBP2 with purified ab128871 at 1/20 dilution (5 µg/ml) (red). Cells were fixed with 4% Paraformaldehyde and permeabilised with 90% Methanol. A Goat anti-rabbit IgG (Alexa Fluor® 488) ([ab150081](#)) secondary antibody was used at 1/2000. Isotype control - Rabbit monoclonal IgG (black). Unlabelled control - Cell without incubation with primary antibody and secondary antibody (blue).



Immunohistochemistry (Formalin/PFA-fixed paraffin-embedded sections) - Anti-CTBP2 antibody
[EPR7611(B)] (ab128871)





Immunohistochemistry (Formalin/PFA-fixed paraffin-embedded sections) analysis of rat stomach tissue sections labeling CTBP2 with Purified ab128871 at 1:12000 (0.011 µg/ml). Heat mediated antigen retrieval was performed using Bond™ Epitope Retrieval Solution 2 (pH 9.0). Tissue was counterstained with Hematoxylin. LeicaDS9800 (Bond™ Polymer Refine Detection) was used at 1:0 dilution. PBS instead of the primary antibody was used as the negative control. The immunostaining was performed on a Leica Biosystems BOND® RX instrument.



Immunohistochemistry (Formalin/PFA-fixed paraffin-embedded sections) analysis of human glioma tissue sections labeling CTBP2 with purified ab128871 at 1:6000 (0.021 µg/ml). Heat mediated antigen retrieval was performed using Bond™ Epitope Retrieval Solution 2 (pH 9.0). Tissue was counterstained with Hematoxylin. LeicaDS9800 (Bond™ Polymer Refine Detection) was used at 1:0 dilution. PBS instead of the primary antibody was used as the negative control. The immunostaining was performed on a Leica Biosystems BOND® RX instrument.

Immunohistochemistry (Formalin/PFA-fixed paraffin-embedded sections) - Anti-CTBP2 antibody [EPR7611(B)] (ab128871)

Why choose a recombinant antibody?

 <p>Research with confidence Consistent and reproducible results</p>	 <p>Long-term and scalable supply Recombinant technology</p>
 <p>Success from the first experiment Confirmed specificity</p>	 <p>Ethical standards compliant Animal-free production</p>

Anti-CTBP2 antibody [EPR7611(B)] (ab128871)

Please note: All products are "FOR RESEARCH USE ONLY. NOT FOR USE IN DIAGNOSTIC PROCEDURES"

Our Abpromise to you: Quality guaranteed and expert technical support

- Replacement or refund for products not performing as stated on the datasheet

- Valid for 12 months from date of delivery
- Response to your inquiry within 24 hours
- We provide support in Chinese, English, French, German, Japanese and Spanish
- Extensive multi-media technical resources to help you
- We investigate all quality concerns to ensure our products perform to the highest standards

If the product does not perform as described on this datasheet, we will offer a refund or replacement. For full details of the Abpromise, please visit <https://www.abcam.co.jp/abpromise> or contact our technical team.

Terms and conditions

- Guarantee only valid for products bought direct from Abcam or one of our authorized distributors