


Anti-CtBP1 antibody [EPR6800] - BSA and Azide free ab248335

リコンビナント RabMAb

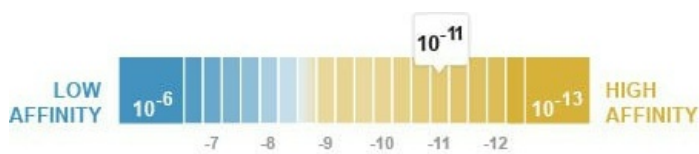
画像数 6

製品の概要

製品名	Anti-CtBP1 antibody [EPR6800] - BSA and Azide free
製品の詳細	Rabbit monoclonal [EPR6800] to CtBP1 - BSA and Azide free
由来種	Rabbit
アプリケーション	適用あり: ICC/IF, IHC-P, WB, Flow Cyt (Intra)
種交差性	交差種: Human 交差が予測される動物種: Mouse, Rat 
免疫原	Synthetic peptide. This information is proprietary to Abcam and/or its suppliers.
特記事項	<p>ab248335 is the carrier-free version of ab129181.</p> <p>Our carrier-free antibodies are typically supplied in a PBS-only formulation, purified and free of BSA, sodium azide and glycerol. The carrier-free buffer and high concentration allow for increased conjugation efficiency.</p> <p>This conjugation-ready format is designed for use with fluorochromes, metal isotopes, oligonucleotides, and enzymes, which makes them ideal for antibody labelling, functional and cell-based assays, flow-based assays (e.g. mass cytometry) and Multiplex Imaging applications.</p> <p>Use our conjugation kits for antibody conjugates that are ready-to-use in as little as 20 minutes with <1 minute hands-on-time and 100% antibody recovery: available for fluorescent dyes, HRP, biotin and gold.</p> <p>This product is compatible with the Maxpar[®] Antibody Labeling Kit from Fluidigm, without the need for antibody preparation. Maxpar[®] is a trademark of Fluidigm Canada Inc.</p> <p>This product is a recombinant monoclonal antibody, which offers several advantages including:</p> <ul style="list-style-type: none">- High batch-to-batch consistency and reproducibility- Improved sensitivity and specificity- Long-term security of supply- Animal-free production <p>For more information see here.</p> <p>Our RabMAb[®] technology is a patented hybridoma-based technology for making rabbit monoclonal antibodies. For details on our patents, please refer to RabMAb[®] patents.</p>

製品の特性

製品の状態 Liquid
 保存方法 Shipped at 4°C. Store at +4°C. Do Not Freeze.
 解離定数 (K_D 値) K_D = 1.50 x 10⁻¹¹ M



[Learn more about K_D](#)

バッファー pH: 7.2
 Constituent: PBS
 キャリア・フリー はい
 精製度 Protein A purified
 ポリ/モノ モノクローナル
 クローン名 EPR6800
 アイソタイプ IgG

アプリケーション

The Abpromise guarantee Abpromise保証は、次のテスト済みアプリケーションにおけるab248335の使用に適用されます
 アプリケーションノートには、推奨の開始希釈率がありますが、適切な希釈率につきましてはご確認ください。

アプリケーション	Abreviews	特記事項
ICC/IF		Use at an assay dependent concentration.
IHC-P		Use at an assay dependent concentration. Perform heat mediated antigen retrieval before commencing with IHC staining protocol.
WB		Use at an assay dependent concentration. Detects a band of approximately 48 kDa (predicted molecular weight: 48 kDa).
Flow Cyt (Intra)		Use at an assay dependent concentration.

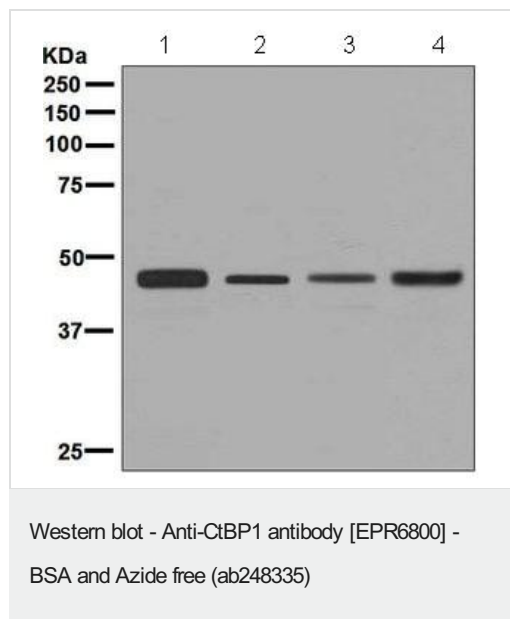
ターゲット情報

機能 Involved in controlling the equilibrium between tubular and stacked structures in the Golgi complex. Functions in brown adipose tissue (BAT) differentiation. Corepressor targeting diverse transcription regulators such as GLIS2. Has dehydrogenase activity.

配列類似性 Belongs to the D-isomer specific 2-hydroxyacid dehydrogenase family.

翻訳後修飾 The level of phosphorylation appears to be regulated during the cell cycle. Phosphorylated upon DNA damage, probably by ATM or ATR. Phosphorylation by HIPK2 on Ser-422 induces proteasomal degradation.
 ADP-ribosylated; when cells are exposed to brefeldin A.
 Sumoylation on Lys-428 is promoted by the E3 SUMO-protein ligase CBX4.

画像



All lanes : Anti-CtBP1 antibody [EPR6800] (**ab129181**) at 1/1000 dilution

Lane 1 : SH-SY5Y cell lysate

Lane 2 : Raji cell lysate

Lane 3 : A549 cell lysate

Lane 4 : HeLa cell lysate

Lysates/proteins at 10 µg per lane.

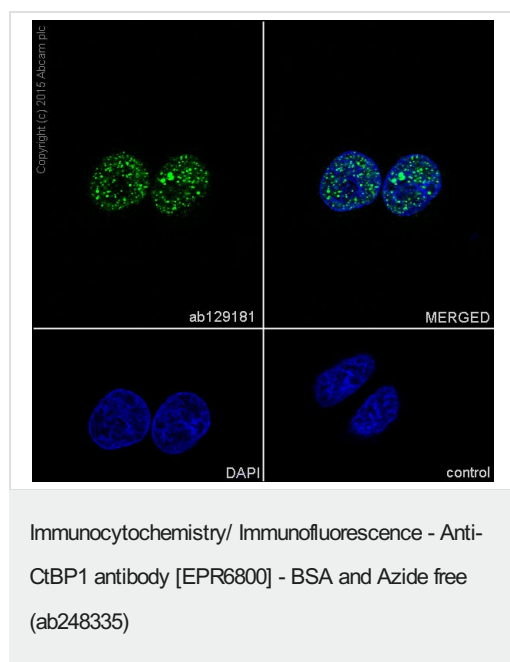
Secondary

All lanes : HRP-conjugated goat anti-rabbit IgG

Predicted band size: 48 kDa

Observed band size: 48 kDa

This data was developed using **ab129181**, the same antibody clone in a different buffer formulation.

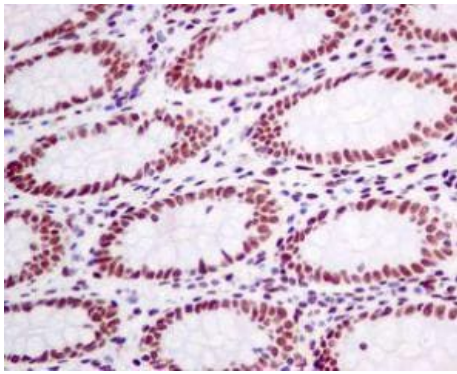


This data was developed using **ab129181**, the same antibody clone in a different buffer

formulation. Immunocytochemistry/Immunofluorescence analysis of HeLa cells labelling CtBP1 with **ab129181** at 1/500. Cells were fixed with 4% paraformaldehyde and permeabilized with 0.1% Triton X-100. **ab150077**, an Alexa Fluor® 488-conjugated goat anti-rabbit IgG (1/1000) was used as the secondary antibody.

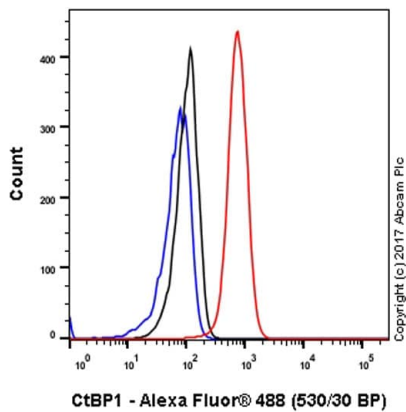
Control: PBS only.

Nuclear counter stain: DAPI.



Immunohistochemistry (Formalin/PFA-fixed paraffin-embedded sections) - Anti-CtBP1 antibody [EPR6800] - BSA and Azide free (ab248335)

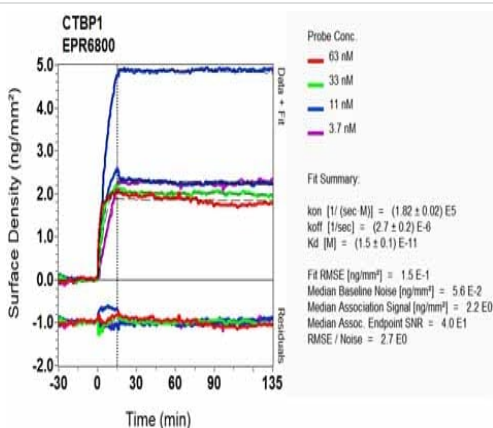
This data was developed using **ab129181**, the same antibody clone in a different buffer formulation. **ab129181**, at 1/100 dilution, staining CtBP1 in formalin-fixed, paraffin-embedded human colon tissue by immunohistochemistry. Perform heat mediated antigen retrieval before commencing with IHC staining protocol.



Flow Cytometry (Intracellular) - Anti-CtBP1 antibody [EPR6800] - BSA and Azide free (ab248335)

This data was developed using **ab129181**, the same antibody clone in a different buffer formulation.

Intracellular Flow Cytometry analysis of Raji (Human Burkitt's lymphoma B lymphocyte) cells labeling CtBP1 (red) with **ab129181** at a 1/2000 dilution. Cells were fixed with 4% paraformaldehyde and permeabilized with 90% methanol. A goat anti-rabbit IgG (Alexa Fluor® 488) (**ab150077**) was used as the secondary antibody at a 1/2000 dilution. Black - Rabbit monoclonal IgG (Black) (**ab172730**). Blue (unlabeled control) - Cell without incubation with primary antibody and secondary antibody (Blue).



OIR-D Scanning - Anti-CtBP1 antibody [EPR6800] - BSA and Azide free (ab248335)

This data was developed using **ab129181**, the same antibody clone in a different buffer formulation. Equilibrium disassociation constant (K_D)

Learn more about K_D

[Click here to learn more about \$K_D\$](#)

Why choose a recombinant antibody?



Research with confidence
Consistent and reproducible results



Long-term and scalable supply
Recombinant technology



Success from the first experiment
Confirmed specificity



Ethical standards compliant
Animal-free production

Anti-CtBP1 antibody [EPR6800] - BSA and Azide free (ab248335)

Please note: All products are "FOR RESEARCH USE ONLY. NOT FOR USE IN DIAGNOSTIC PROCEDURES"

Our Abpromise to you: Quality guaranteed and expert technical support

- Replacement or refund for products not performing as stated on the datasheet
- Valid for 12 months from date of delivery
- Response to your inquiry within 24 hours
- We provide support in Chinese, English, French, German, Japanese and Spanish
- Extensive multi-media technical resources to help you
- We investigate all quality concerns to ensure our products perform to the highest standards

If the product does not perform as described on this datasheet, we will offer a refund or replacement. For full details of the Abpromise, please visit <https://www.abcam.co.jp/abpromise> or contact our technical team.

Terms and conditions

- Guarantee only valid for products bought direct from Abcam or one of our authorized distributors