

### Anti-CSNK2A1 antibody [EP1963Y] ab76040

KO 評価済 リコンビナント RabMAb

9 References 画像数 5

#### 製品の概要

製品名	Anti-CSNK2A1 antibody [EP1963Y]
製品の詳細	Rabbit monoclonal [EP1963Y] to CSNK2A1
由来種	Rabbit
アプリケーション	<b>適用あり:</b> Flow Cyt (Intra), WB <b>適用なし:</b> ICC/IF or IP
種交差性	<b>交差種:</b> Mouse, Rat, Human
免疫原	Synthetic peptide within Human CSNK2A1 aa 1-100 (N terminal). The exact sequence is proprietary. Database link: <a href="#">P68400</a> (Peptide available as <a href="#">ab203372</a> )
ポジティブ・コントロール	WB: HeLa and HCT116 cell lysate, Mouse and Rat brain lysate. Flow cyto(intra): Jurkat (Human T cell leukemia T lymphocyte) cells
特記事項	This product is a recombinant monoclonal antibody, which offers several advantages including: <ul style="list-style-type: none"> <li>- High batch-to-batch consistency and reproducibility</li> <li>- Improved sensitivity and specificity</li> <li>- Long-term security of supply</li> <li>- Animal-free production</li> </ul> For more information <a href="#">see here</a> . Our RabMAb <sup>®</sup> technology is a patented hybridoma-based technology for making rabbit monoclonal antibodies. For details on our patents, please refer to <a href="#">RabMAb<sup>®</sup> patents</a> .

#### 製品の特性

製品の状態	Liquid
保存方法	Shipped at 4°C. Upon delivery aliquot and store at -20°C. Avoid repeated freeze / thaw cycles.
バッファー	pH: 7.20 Preservative: 0.01% Sodium azide Constituents: 9% PBS, 40% Glycerol (glycerin, glycerine), 0.05% BSA, 50% Tissue culture supernatant
精製度	Protein A purified

ポリ/モノ	モノクローナル
クローン名	EP1963Y
アイソタイプ	IgG

### アプリケーション

The Abpromise guarantee      **Abpromise保証は、**次のテスト済みアプリケーションにおけるab76040の使用に適用されます  
 アプリケーションノートには、推奨の開始希釈率がありますが、適切な希釈率につきましてはご確認ください。

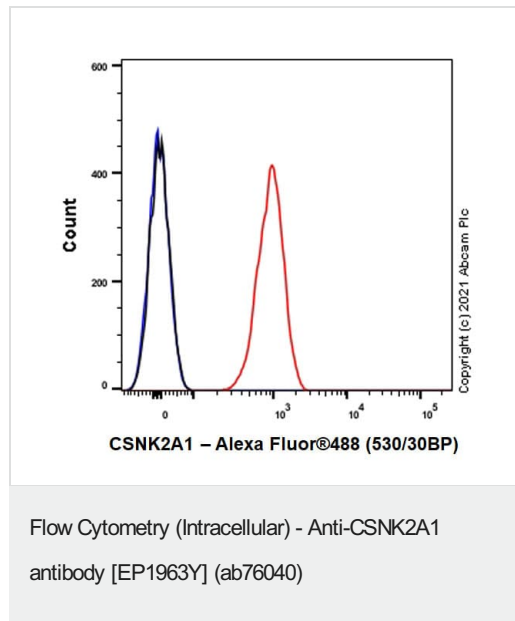
アプリケーション	Abreviews	特記事項
Flow Cyt (Intra)		1/20 - 1/50. <b>ab172730</b> - Rabbit monoclonal IgG, is suitable for use as an isotype control with this antibody.
WB		1/500 - 1/1000. Detects a band of approximately 45 kDa (predicted molecular weight: 45 kDa).

追加情報      Is unsuitable for ICC/IF or IP.

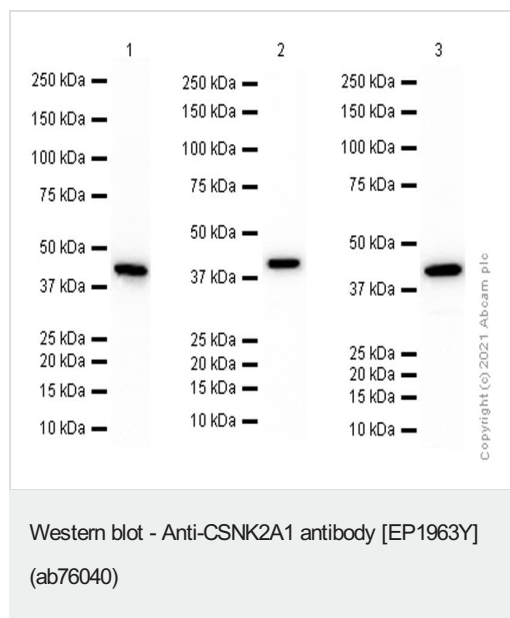
### ターゲット情報

機能	Casein kinases are operationally defined by their preferential utilization of acidic proteins such as caseins as substrates. The alpha and alpha' chains contain the catalytic site. Participates in Wnt signaling. CK2 phosphorylates 'Ser-392' of p53/TP53 following UV irradiation.
配列類似性	Belongs to the protein kinase superfamily. Ser/Thr protein kinase family. CK2 subfamily. Contains 1 protein kinase domain.

### 画像



Intracellular Flow Cytometry analysis of Jurkat (Human T cell leukemia T lymphocyte) cells labeling CSNK2A1 with purified ab76040 at 1:20 dilution (10 µg/ml) (Red). Cells were fixed with 4% Paraformaldehyde and permeabilised with 90% Methanol. A Goat anti rabbit IgG (Alexa Fluor® 488, **ab150077**) (1/2000 dilution) was used as the secondary antibody. Rabbit monoclonal IgG (Black) was used as a isotype control. Cell without incubation with primary antibody and secondary antibody (Blue) were used as unlabeled control.



**All lanes :** Anti-CSNK2A1 antibody [EP1963Y] (ab76040) at 1/1000 dilution

**Lane 1 :** HeLa (Human cervix adenocarcinoma epithelial cell) whole cell lysate

**Lane 2 :** Mouse brain lysate

**Lane 3 :** Rat brain lysate

Lysates/proteins at 15 µg per lane.

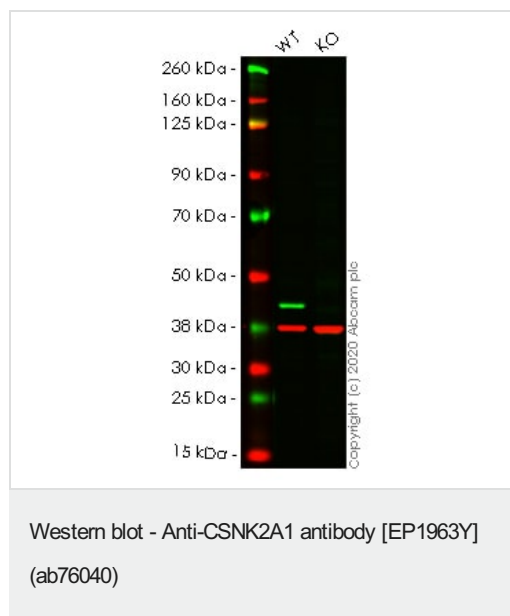
## Secondary

**All lanes :** Goat Anti-Rabbit IgG H&L (HRP) ([ab97051](#)) at 1/20000 dilution

**Predicted band size:** 45 kDa

**Observed band size:** 45 kDa

Blocking and diluting buffer and concentration: 5% NFDM/TBST.



**All lanes :** Anti-CSNK2A1 antibody [EP1963Y] (ab76040) at 1/1000 dilution

**Lane 1 :** Wild-type HCT116 cell lysate

**Lane 2 :** CSNK2A1 knockout HCT116 cell lysate

Lysates/proteins at 20 µg per lane.

Performed under reducing conditions.

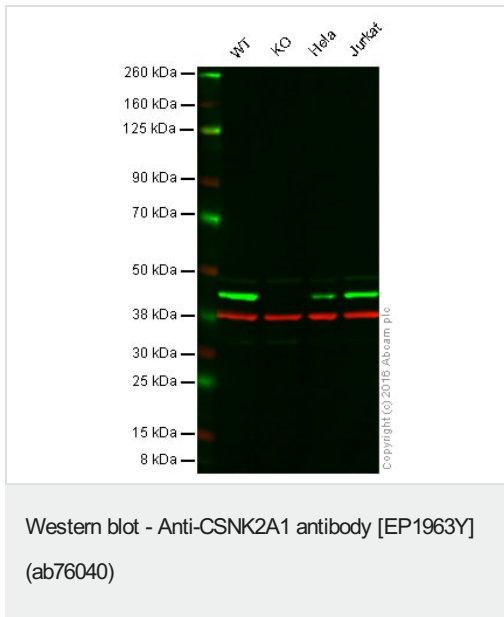
**Predicted band size:** 45 kDa

**Observed band size:** 45 kDa

**Lanes 1-2:** Merged signal (red and green). Green - ab76040 observed at 45 kDa. Red - loading control [ab8245](#) observed at 37 kDa.

ab76040 Anti-CSNK2A1 antibody [EP1963Y] was shown to specifically react with CSNK2A1 in wild-type HCT116 cells. Loss of signal was observed when knockout cell line [ab266864](#) (knockout cell lysate [ab257401](#)) was used. Wild-type and CSNK2A1 knockout samples were subjected to SDS-PAGE. ab76040 and Anti-

GAPDH antibody [6C5] - Loading Control ([ab8245](#)) were incubated overnight at 4°C at 1 in 1000 and 1 in 20000 dilution respectively. Blots were developed with Goat anti-Rabbit IgG H&L (IRDye® 800CW) preadsorbed ([ab216773](#)) and Goat anti-Mouse IgG H&L (IRDye® 680RD) preadsorbed ([ab216776](#)) secondary antibodies at 1 in 20000 dilution for 1 hour at room temperature before imaging.



**All lanes :** Anti-CSNK2A1 antibody [EP1963Y] (ab76040) at 1/500 dilution

**Lane 1 :** Wild-type HAP1 cell lysate

**Lane 2 :** CSNK2A1 knockout HAP1 cell lysate

**Lane 3 :** HeLa cell lysate

**Lane 4 :** Jurkat cell lysate

Lysates/proteins at 20 µg per lane.

**Predicted band size:** 45 kDa

**Lanes 1 -4:** Merged signal (red and green). Green – ab76040 observed at 45 kDa. Red - loading control, [ab8245](#), observed at 37 kDa.

ab76040 was shown to specifically react with CSNK2A1 when CCSNK2A1 knockout samples were used. Wild-type and CSNK2A1 knockout samples were subjected to SDS-PAGE. ab76040 and [ab8245](#) (loading control to GAPDH) were diluted at 1/500 and 1/10 000 respectively and incubated overnight at 4°C. Blots were developed with Goat anti-Rabbit IgG H&L (IRDye® 800CW) preadsorbed ([ab216773](#)) and Goat anti-Mouse IgG H&L (IRDye® 680RD) preadsorbed ([ab216776](#)) secondary antibodies at 1/10000 dilution for 1 hour at room temperature before imaging.

### Why choose a recombinant antibody?



**Research with confidence**  
Consistent and reproducible results



**Long-term and scalable supply**  
Recombinant technology



**Success from the first experiment**  
Confirmed specificity



**Ethical standards compliant**  
Animal-free production

Anti-CSNK2A1 antibody [EP1963Y] (ab76040)

**Please note:** All products are "FOR RESEARCH USE ONLY. NOT FOR USE IN DIAGNOSTIC PROCEDURES"

### Our Abpromise to you: Quality guaranteed and expert technical support

---

- Replacement or refund for products not performing as stated on the datasheet
- Valid for 12 months from date of delivery
- Response to your inquiry within 24 hours
- We provide support in Chinese, English, French, German, Japanese and Spanish
- Extensive multi-media technical resources to help you
- We investigate all quality concerns to ensure our products perform to the highest standards

If the product does not perform as described on this datasheet, we will offer a refund or replacement. For full details of the Abpromise, please visit <https://www.abcam.co.jp/abpromise> or contact our technical team.

### Terms and conditions

---

- Guarantee only valid for products bought direct from Abcam or one of our authorized distributors