


# Anti-CSN2 antibody ab10426

**1** [References](#) **2** [画像数](#)

### 製品の概要

製品名	Anti-CSN2 antibody
製品の詳細	Rabbit polyclonal to CSN2
由来種	Rabbit
アプリケーション	<b>適用あり:</b> WB, IHC-P
種交差性	<b>交差種:</b> Mouse, Human <b>交差が予測される動物種:</b> Rat, Rabbit, Horse, Chicken, Guinea pig, Cow, Dog, Pig, Xenopus laevis, Chimpanzee, Drosophila melanogaster, Zebrafish, Rhesus monkey, Gorilla, Orangutan, Xenopus tropicalis 
免疫原	Synthetic peptide corresponding to CSN2. The epitope recognized by ab10426 maps to a region between residues 1 and 50 of human CSN2. Database link: <a href="#">P61201</a>
ポジティブ・コントロール	WB: HEK293T cells.
特記事項	<p>CSN2 is a subunit of the JUN activation-domain binding protein 1 (JAB1), containing signalosome complex (or COP9 complex) which has kinase activity and phosphorylates C-JUN. The signalosome complex may play a role in signal transduction.</p> <p>The Life Science industry has been in the grips of a reproducibility crisis for a number of years. Abcam is leading the way in addressing this with our range of recombinant monoclonal antibodies and knockout edited cell lines for gold-standard validation. Please check that this product meets your needs before purchasing.</p> <p>If you have any questions, special requirements or concerns, please send us an inquiry and/or contact our Support team ahead of purchase. Recommended alternatives for this product can be found below, along with publications, customer reviews and Q&amp;As</p>

### 製品の特性

製品の状態	Liquid
保存方法	Shipped at 4°C. Upon delivery aliquot and store at -20°C. Avoid freeze / thaw cycles.
バッファー	pH: 7 Preservative: 0.1% Sodium azide Constituents: 0.021% PBS, 1.764% Sodium citrate, 1.815% Tris
精製度	Immunogen affinity purified

特記事項 (精製)	Antibodies were affinity purified using the peptide immobilized on solid support.
一次抗体 備考	CSN2 is a subunit of the JUN activation-domain binding protein 1 (JAB1), containing signalosome complex (or COP9 complex) which has kinase activity and phosphorylates C-JUN. The signalosome complex may play a role in signal transduction.
ポリ/モノ	ポリクローナル
アイソタイプ	IgG

## アプリケーション

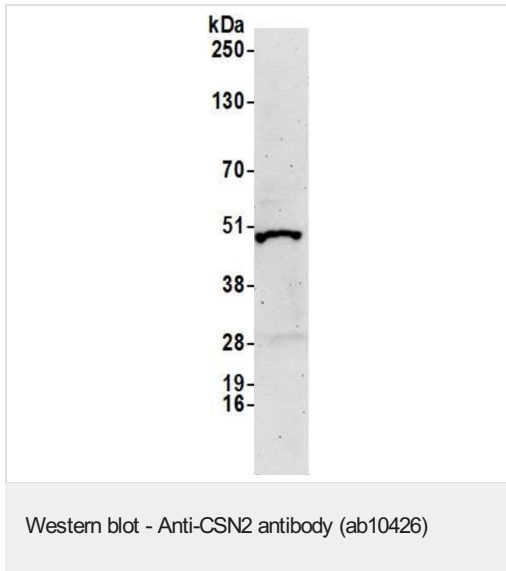
**The Abpromise guarantee**      **Abpromise保証は、** 次のテスト済みアプリケーションにおけるab10426の使用に適用されます  
 アプリケーションノートには、推奨の開始希釈率がありますが、適切な希釈率につきましてはご検討ください。

アプリケーション	Abreviews	特記事項
WB		1/1000 - 1/10000. Detects a band of approximately 55 kDa (predicted molecular weight: 52 kDa).
IHC-P		1/1000 - 1/5000. Perform heat mediated antigen retrieval with citrate buffer pH 6 before commencing with IHC staining protocol.

## ターゲット情報

機能	Essential component of the COP9 signalosome complex (CSN), a complex involved in various cellular and developmental processes. The CSN complex is an essential regulator of the ubiquitin (Ubl) conjugation pathway by mediating the deneddylation of the cullin subunits of SCF-type E3 ligase complexes, leading to decrease the Ubl ligase activity of SCF-type complexes such as SCF, CSA or DDB2. The complex is also involved in phosphorylation of p53/TP53, c-jun/JUN, IkappaBalpha/NFKBIA, ITPK1 and IRF8/ICSBP, possibly via its association with CK2 and PKD kinases. CSN-dependent phosphorylation of TP53 and JUN promotes and protects degradation by the Ubl system, respectively. Involved in early stage of neuronal differentiation via its interaction with NIF3L1.
配列類似性	Belongs to the CSN2 family. Contains 1 PCI domain.
翻訳後修飾	Phosphorylated by CK2 and PKD kinases.
細胞内局在	Cytoplasm. Nucleus.

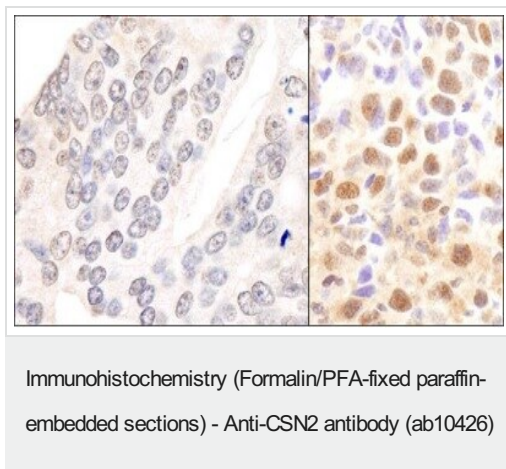
## 画像



Anti-CSN2 antibody (ab10426) at 1/10000 dilution + HEK293T  
Whole cell lysate at 50 µg

**Predicted band size:** 52 kDa

Detection: Chemiluminescence with an exposure time of 3 minutes.



IHC-P section of human prostate carcinoma (left) and mouse squamous cell carcinoma (right). Epitope retrieval with citrate buffer pH 6.0

Antibody used at a dilution of 1:5,000 (0.2µg/ml) and 1:1,000 (1µg/ml).

Detection: DAB

**Please note:** All products are "FOR RESEARCH USE ONLY. NOT FOR USE IN DIAGNOSTIC PROCEDURES"

### Our Abpromise to you: Quality guaranteed and expert technical support

- Replacement or refund for products not performing as stated on the datasheet
- Valid for 12 months from date of delivery
- Response to your inquiry within 24 hours
- We provide support in Chinese, English, French, German, Japanese and Spanish
- Extensive multi-media technical resources to help you
- We investigate all quality concerns to ensure our products perform to the highest standards

If the product does not perform as described on this datasheet, we will offer a refund or replacement. For full details of the Abpromise, please visit <https://www.abcam.co.jp/abpromise> or contact our technical team.

#### **Terms and conditions**

---

- Guarantee only valid for products bought direct from Abcam or one of our authorized distributors