


Anti-CSF-1-R antibody [SP211] ab183316

リコンビナント **RabMAb**

★★★★☆ **4 Abreviews** **16 References** 画像数 10

製品の概要

製品名	Anti-CSF-1-R antibody [SP211]
製品の詳細	Rabbit monoclonal [SP211] to CSF-1-R
由来種	Rabbit
アプリケーション	適用あり: Flow Cyt (Intra), IHC-P
種交差性	交差種: Rat, Human 交差が予測される動物種: Mouse 
免疫原	Synthetic peptide. This information is proprietary to Abcam and/or its suppliers.
ポジティブ・コントロール	IHC-P: Human colon, lung, liver, skin, tonsil and skin squamous cell carcinoma, rat spleen tissues. Flow Cyt (intra): SK-BR-3 cells.
特記事項	This product is FOR RESEARCH USE ONLY. For commercial use, please contact partnerships@abcam.com.

製品の特性

製品の状態	Liquid
保存方法	Shipped at 4°C. Store at +4°C short term (1-2 weeks). Upon delivery aliquot. Store at -20°C long term. Avoid freeze / thaw cycle.
バッファー	pH: 7.20 Preservative: 0.1% Sodium azide Constituents: PBS, 1% BSA
精製度	Protein A/G purified
特記事項(精製)	Purified from TCS by protein A/G.
ポリクローナル	モノクローナル
クローン名	SP211
アイソタイプ	IgG

アプリケーション

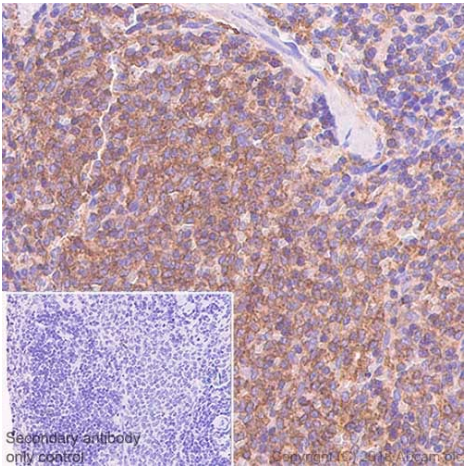
The Abpromise guarantee Abpromise保証は、次のテスト済みアプリケーションにおけるab183316の使用に適用されます
 アプリケーションノートには、推奨の開始希釈率がありますが、適切な希釈率につきましてはご確認ください。

アプリケーション	Abreviews	特記事項
Flow Cyt (Intra)		1/20.
IHC-P	★★★★☆ (3)	1/100. Perform heat mediated antigen retrieval with citrate buffer pH 6 before commencing with IHC staining protocol. ab172730 - Rabbit monoclonal IgG, is suitable for use as an isotype control with this antibody. Boil tissue section in 10mM citrate buffer, pH 6.0 for 10 min followed by cooling at room temperature for 20 min.

ターゲット情報

機能	Protein tyrosine-kinase transmembrane receptor for CSF1 and IL34.
組織特異性	Expressed in bone marrow and in differentiated blood mononuclear cells.
配列類似性	Belongs to the protein kinase superfamily. Tyr protein kinase family. CSF-1/PDGF receptor subfamily. Contains 5 Ig-like C2-type (immunoglobulin-like) domains. Contains 1 protein kinase domain.
細胞内局在	Membrane.

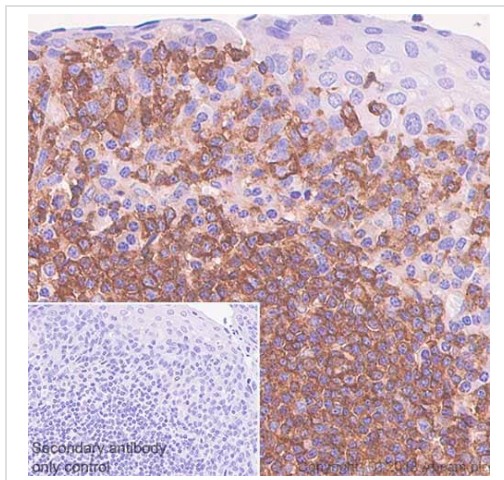
画像



Secondary antibody only control

Immunohistochemistry (Formalin/PFA-fixed paraffin-embedded sections) - Anti-CSF-1-R antibody [SP211] (ab183316)

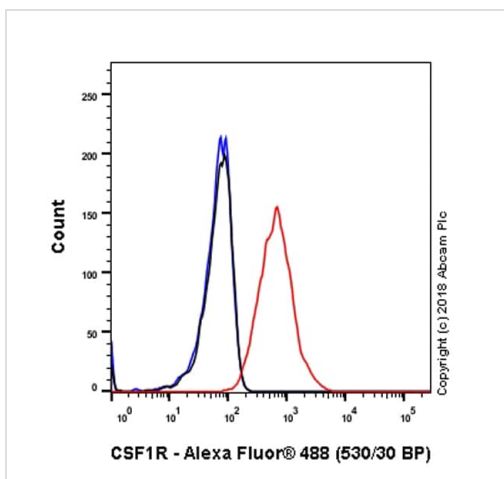
Immunohistochemistry (Formalin/PFA-fixed paraffin-embedded sections) analysis of rat spleen tissue sections labeling CSF-1-R with ab183316 at 1/100 dilution (1.13 µg/ml). Heat mediated antigen retrieval with sodium citrate buffer (pH 6.0, epitope retrieval solution 1) for 10mins. Rabbit specific IHC polymer detection kit HRP/DAB (**ab209101**) was used as the secondary antibody. Hematoxylin was used as a counterstain. Positive staining on the rat spleen, performed on a Leica Biosystems BOND™ RX instrument. The section was incubated with ab183316 for 10 mins at room temperature.



Immunohistochemistry (Formalin/PFA-fixed paraffin-embedded sections) - Anti-CSF-1-R antibody [SP211] (ab183316)

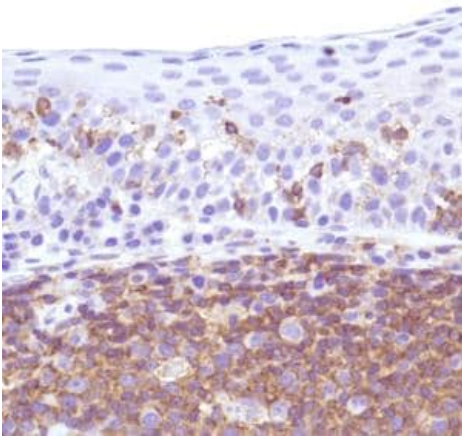
Immunohistochemistry (Formalin/PFA-fixed paraffin-embedded sections) analysis of Human tonsil tissue sections labeling CSF-1-R with ab183316 at 1/100 dilution (1.13 µg/ml). Heat mediated antigen retrieval with sodium citrate buffer (pH 6.0, epitope retrieval solution 1) for 10mins. Rabbit specific IHC polymer detection kit HRP/DAB (**ab209101**) was used as the secondary antibody. Hematoxylin was used as a counterstain. Positive staining on the human tonsil, performed on a Leica Biosystems BOND™ RX instrument.

The section was incubated with ab183316 for 10 mins at room temperature.



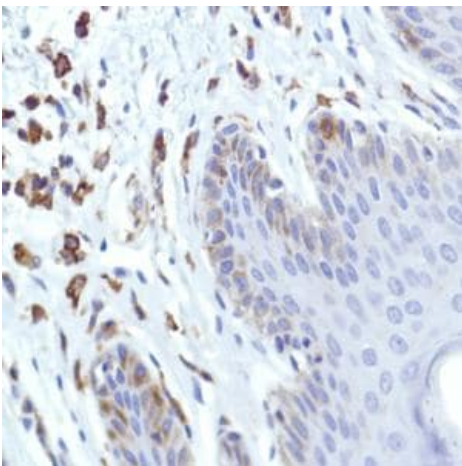
Flow Cytometry (Intracellular) - Anti-CSF-1-R antibody [SP211] (ab183316)

Intracellular Flow Cytometry analysis of SK-BR-3 (human mammary gland adenocarcinoma) labeling CSF-1-R with purified ab183316 at 1/20 dilution (5.65µg/ml) (red). Cells were fixed with 4% paraformaldehyde and permeabilised with 90% methanol. Goat anti rabbit IgG (Alexa Fluor® 488, **ab150077**) at 1/2000 dilution was used as a secondary antibody. Isotype control - Rabbit monoclonal IgG (**ab172730**) (Black). Unlabeled control - Unlabelled cells (blue).



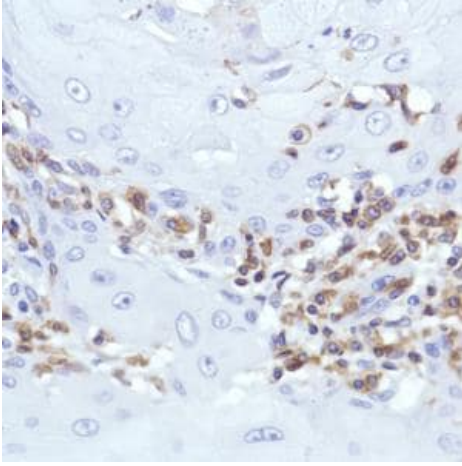
Immunohistochemical analysis of human tonsil tissue labeling CSF-1-R using ab183316 at a 1/100 dilution

Immunohistochemistry (Formalin/PFA-fixed paraffin-embedded sections) - Anti-CSF-1-R antibody [SP211] (ab183316)



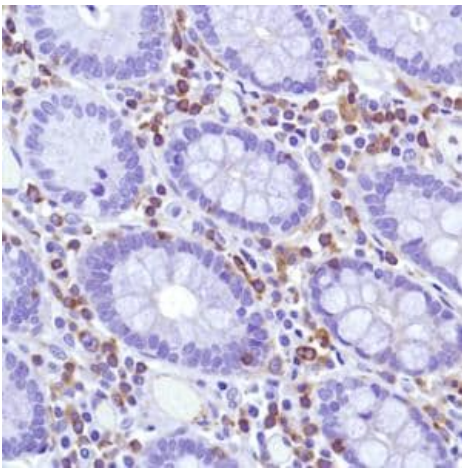
Immunohistochemical analysis of human skin tissue labeling CSF-1-R using ab183316 at a 1/100 dilution

Immunohistochemistry (Formalin/PFA-fixed paraffin-embedded sections) - Anti-CSF-1-R antibody [SP211] (ab183316)



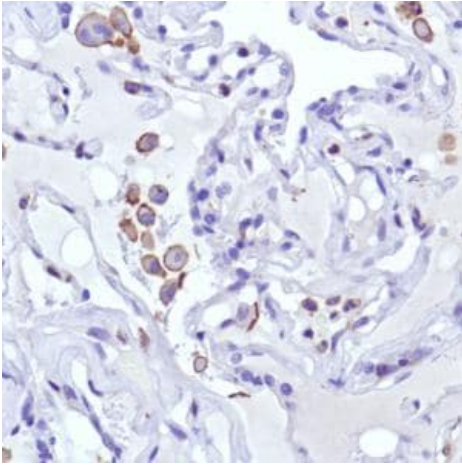
Immunohistochemical analysis of human skin squamous cell carcinoma tissue labeling CSF-1-R using ab183316 at a 1/100 dilution

Immunohistochemistry (Formalin/PFA-fixed paraffin-embedded sections) - Anti-CSF-1-R antibody [SP211] (ab183316)



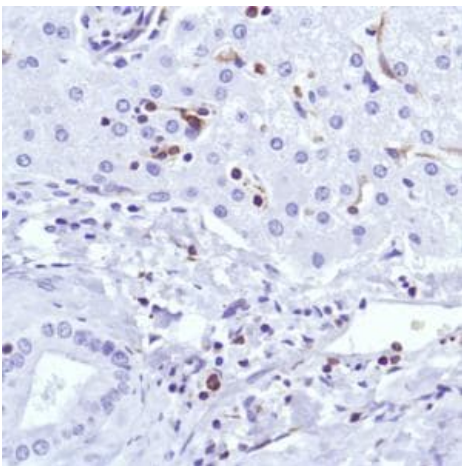
Immunohistochemical analysis of human colon tissue labeling CSF-1-R using ab183316 at a 1/100 dilution.

Immunohistochemistry (Formalin/PFA-fixed paraffin-embedded sections) - Anti-CSF-1-R antibody [SP211] (ab183316)



Immunohistochemical analysis of human lung tissue labeling CSF-1-R using ab183316 at a 1/100 dilution.

Immunohistochemistry (Formalin/PFA-fixed paraffin-embedded sections) - Anti-CSF-1-R antibody [SP211] (ab183316)



Immunohistochemical analysis of human liver tissue labeling CSF-1-R using ab183316 at a 1/100 dilution.

Immunohistochemistry (Formalin/PFA-fixed paraffin-embedded sections) - Anti-CSF-1-R antibody [SP211] (ab183316)

Why choose a recombinant antibody?



Research with confidence
Consistent and reproducible results



Long-term and scalable supply
Recombinant technology



Success from the first experiment
Confirmed specificity



Ethical standards compliant
Animal-free production

Anti-CSF-1-R antibody [SP211] (ab183316)

Please note: All products are "FOR RESEARCH USE ONLY. NOT FOR USE IN DIAGNOSTIC PROCEDURES"

Our Abpromise to you: Quality guaranteed and expert technical support

- Replacement or refund for products not performing as stated on the datasheet
- Valid for 12 months from date of delivery
- Response to your inquiry within 24 hours
- We provide support in Chinese, English, French, German, Japanese and Spanish
- Extensive multi-media technical resources to help you
- We investigate all quality concerns to ensure our products perform to the highest standards

If the product does not perform as described on this datasheet, we will offer a refund or replacement. For full details of the Abpromise, please visit <https://www.abcam.co.jp/abpromise> or contact our technical team.

Terms and conditions

- Guarantee only valid for products bought direct from Abcam or one of our authorized distributors