


Anti-CROP antibody ab80412

画像数 2

製品の概要

製品名	Anti-CROP antibody
製品の詳細	Rabbit polyclonal to CROP
由来種	Rabbit
アプリケーション	適用あり: IHC-P, IP
種交差性	交差種: Mouse, Human 交差が予測される動物種: Rat, Rabbit, Chicken, Cow, Dog, Pig, Chimpanzee, Rhesus monkey, Gorilla, Tilapia, Orangutan 
免疫原	Synthetic peptide corresponding to a region between residue 1 and 50 of human CROP (NP_057508.2).
ポジティブ・コントロール	IHC-P: Human testicular seminoma, mouse colon carcinoma tissue. WB: HeLa cells whole cell lysate.
特記事項	<p>The Life Science industry has been in the grips of a reproducibility crisis for a number of years. Abcam is leading the way in addressing this with our range of recombinant monoclonal antibodies and knockout edited cell lines for gold-standard validation. Please check that this product meets your needs before purchasing.</p> <p>If you have any questions, special requirements or concerns, please send us an inquiry and/or contact our Support team ahead of purchase. Recommended alternatives for this product can be found below, along with publications, customer reviews and Q&As</p>

製品の特性

製品の状態	Liquid
保存方法	Shipped at 4°C. Upon delivery aliquot and store at -20°C. Avoid freeze / thaw cycles.
バッファー	<p>pH: 7</p> <p>Preservative: 0.09% Sodium azide</p> <p>Constituents: 1.815% Tris, 1.764% Sodium citrate, 0.021% PBS</p>
精製度	Immunogen affinity purified
ポリ/モノ	ポリクローナル
アイソタイプ	IgG

アプリケーション

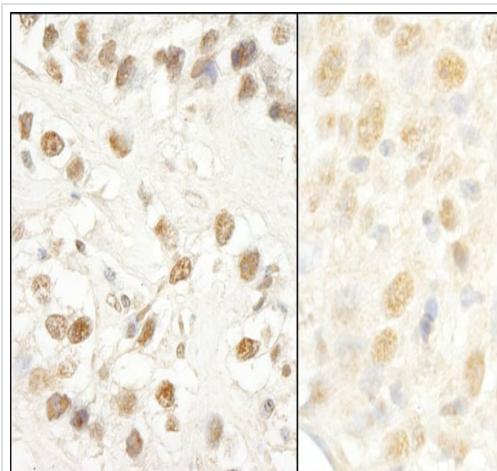
The Abpromise guarantee Abpromise保証は、 次のテスト済みアプリケーションにおけるab80412の使用に適用されます
アプリケーションノートには、推奨の開始希釈率がありますが、適切な希釈率につきましてはご検討ください。

アプリケーション	Abreviews	特記事項
IHC-P		1/500 - 1/2000. Perform heat mediated antigen retrieval with citrate buffer pH 6 before commencing with IHC staining protocol.
IP		Use at 2-5 µg/mg of lysate.

ターゲット情報

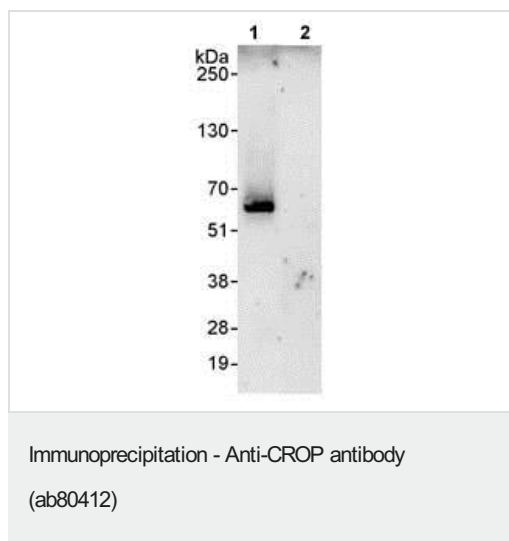
機能	Binds cAMP regulatory element DNA sequence. May play a role in RNA splicing.
組織特異性	Widely expressed. Highest levels in heart, brain, pancreas, thymus, ovary, small intestine and peripheral blood leukocytes, as well as cerebellum, putamen and pituitary gland. Lowest levels in lung, liver and kidney. Also expressed in fetal tissues, including brain, heart, kidney, thymus and lung.
配列類似性	Belongs to the Luc7 family.
翻訳後修飾	Phosphorylated in vitro by SRPK1, SRPK2 and CLK1.
細胞内局在	Nucleus speckle. The subnuclear localization is affected by cisplatin.

画像



Immunohistochemistry (Formalin/PFA-fixed paraffin-embedded sections) analysis of human testicular seminoma (left) and mouse colon carcinoma (right) tissue labelling CROP with ab80412 at 1/1000 (1µg/ml). Detection: DAB.

Immunohistochemistry (Formalin/PFA-fixed paraffin-embedded sections) - Anti-CROP antibody (ab80412)



Detection of Human CROP in immunoprecipitates of whole cell lysate from HeLa cells (1 mg for IP, 20% of IP loaded) using ab80412 at 3 µg/mg lysate for IP (lane 1). ab80412 was used at 1 µg/ml for subsequent WB detection. Lane 2 represents control IgG IP.

Please note: All products are "FOR RESEARCH USE ONLY. NOT FOR USE IN DIAGNOSTIC PROCEDURES"

Our Abpromise to you: Quality guaranteed and expert technical support

- Replacement or refund for products not performing as stated on the datasheet
- Valid for 12 months from date of delivery
- Response to your inquiry within 24 hours
- We provide support in Chinese, English, French, German, Japanese and Spanish
- Extensive multi-media technical resources to help you
- We investigate all quality concerns to ensure our products perform to the highest standards

If the product does not perform as described on this datasheet, we will offer a refund or replacement. For full details of the Abpromise, please visit <https://www.abcam.co.jp/abpromise> or contact our technical team.

Terms and conditions

- Guarantee only valid for products bought direct from Abcam or one of our authorized distributors