

Anti-CrkL antibody [Y244] - BSA and Azide free ab247210

KO 評価済 リコンビナント RabMAb

画像数 7

製品の概要

製品名	Anti-CrkL antibody [Y244] - BSA and Azide free
製品の詳細	Rabbit monoclonal [Y244] to CrkL - BSA and Azide free
由来種	Rabbit
特異性	<p>This antibody recognises CrkL (Crk-like)protein.</p> <p>The mouse and rat recommendation is based on the WB results. We do not guarantee IHC-P for mouse and rat</p>
アプリケーション	適用あり: WB, IHC-P, Flow Cyt, IP, ICC/IF
種交差性	交差種: Mouse, Rat, Human
免疫原	Synthetic peptide. This information is proprietary to Abcam and/or its suppliers.
ポジティブ・コントロール	WB: Wild-type HeLa, CRKL knockout HeLa and K-562 cells. K-562 whole cell lysate. Mouse and rat thymus lysate. ICC/IF: K-562 cells; IHC-P: Human colon tissue; Flow Cyt: K-562 cells.
特記事項	<p>ab247210 is the carrier-free version of ab32018.</p> <p>Our carrier-free antibodies are typically supplied in a PBS-only formulation, purified and free of BSA, sodium azide and glycerol. The carrier-free buffer and high concentration allow for increased conjugation efficiency.</p> <p>This conjugation-ready format is designed for use with fluorochromes, metal isotopes, oligonucleotides, and enzymes, which makes them ideal for antibody labelling, functional and cell-based assays, flow-based assays (e.g. mass cytometry) and Multiplex Imaging applications.</p> <p>Use our conjugation kits for antibody conjugates that are ready-to-use in as little as 20 minutes with <1 minute hands-on-time and 100% antibody recovery: available for fluorescent dyes, HRP, biotin and gold.</p> <p>This product is compatible with the Maxpar[®] Antibody Labeling Kit from Fluidigm, without the need for antibody preparation. Maxpar[®] is a trademark of Fluidigm Canada Inc.</p> <p>This product is a recombinant monoclonal antibody, which offers several advantages including:</p> <ul style="list-style-type: none">- High batch-to-batch consistency and reproducibility- Improved sensitivity and specificity- Long-term security of supply- Animal-free production <p>For more information see here.</p>

Our RabMAb[®] technology is a patented hybridoma-based technology for making rabbit monoclonal antibodies. For details on our patents, please refer to [RabMAb[®] patents](#).

製品の特性

製品の状態	Liquid
保存方法	Shipped at 4°C. Store at +4°C. Do Not Freeze.
バッファー	pH: 7.2 Constituent: PBS
キャリア・フリー	はい
精製度	Protein A purified
ポリ/モノ	モノクローナル
クローン名	Y244
アイソタイプ	IgG

アプリケーション

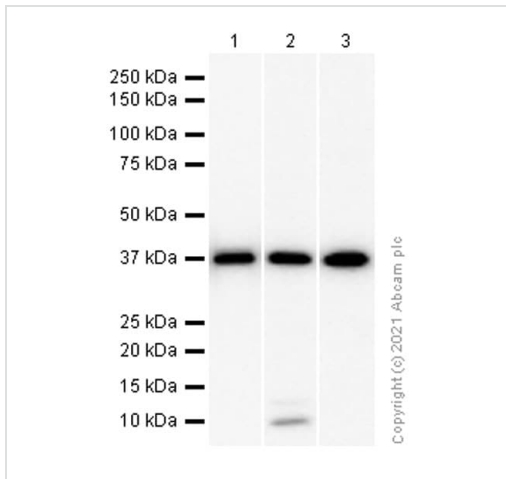
The Abpromise guarantee **Abpromise保証は、** 次のテスト済みアプリケーションにおけるab247210の使用に適用されます
アプリケーションノートには、推奨の開始希釈率がありますが、適切な希釈率につきましてはご検討ください。

アプリケーション	Abreviews	特記事項
WB		Use at an assay dependent concentration. Detects a band of approximately 36 kDa (predicted molecular weight: 33 kDa).
IHC-P		Use at an assay dependent concentration. Perform heat mediated antigen retrieval with citrate buffer pH 6 before commencing with IHC staining protocol. The mouse and rat recommendation is based on the WB results. We do not guarantee IHC-P for mouse and rat
Flow Cyt		Use at an assay dependent concentration.
IP		Use at an assay dependent concentration.
ICC/IF		Use at an assay dependent concentration.

ターゲット情報

機能	May mediate the transduction of intracellular signals.
配列類似性	Belongs to the CRK family. Contains 1 SH2 domain. Contains 2 SH3 domains.

画像



Western blot - Anti-CrkL antibody [Y244] - BSA and Azide free (ab247210)

All lanes : Anti-CrkL antibody [Y244] (**ab32018**) at 1/1000 dilution (Purified)

Lane 1 : K-562 (Human chronic myelogenous leukemia lymphoblast) whole cell lysate

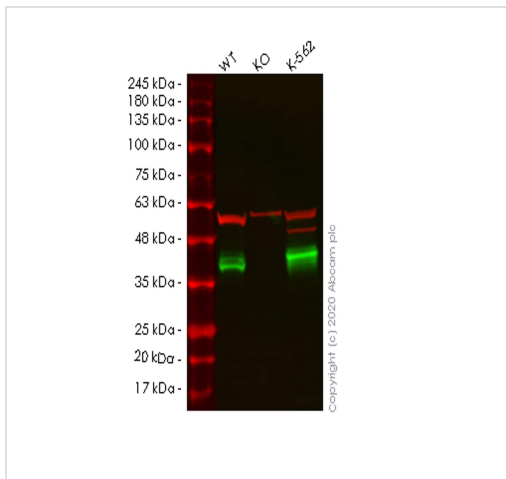
Lane 2 : Mouse thymus lysate

Lane 3 : Rat thymus lysate

Secondary

All lanes : Goat Anti-Rabbit IgG H&L (HRP) (**ab97051**) at 1/20000 dilution

Predicted band size: 33 kDa



Western blot - Anti-CrkL antibody [Y244] - BSA and Azide free (ab247210)

All lanes : Anti-CrkL antibody [Y244] (**ab32018**) at 1/1000 dilution

Lane 1 : Wild-type HeLa cell lysate

Lane 2 : CRKL knockout HeLa cell lysate

Lane 3 : K-562 cell lysate

Lysates/proteins at 20 µg per lane.

Secondary

All lanes : Goat anti-Rabbit IgG H&L (IRDye® 800CW) preadsorbed (**ab216773**) at 1/10000 dilution

Predicted band size: 33 kDa

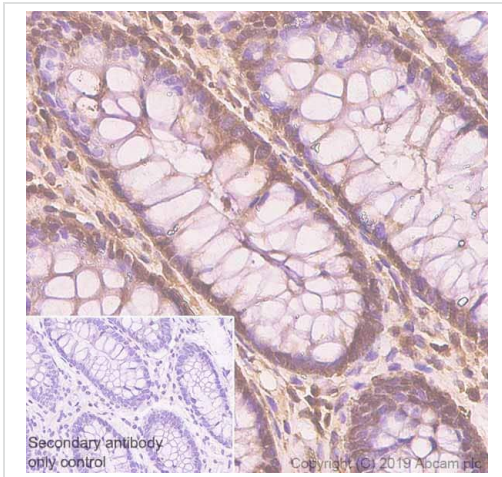
Observed band size: 37 kDa

This data was developed using the same antibody clone in a different buffer formulation (**ab32018**).

Lanes 1-3: Merged signal (red and green). Green - **ab32018** observed at 37 kDa. Red - loading control **ab7291** observed at 50 kDa.

ab32018 Anti-CrkL antibody [Y244] was shown to specifically react with CrkL in wild-type HeLa cells. Loss of signal was observed when knockout cell line **ab265993** (knockout cell lysate **ab257397**) was used. Wild-type and CrkL knockout samples were subjected to SDS-PAGE. **ab32018** and Anti-alpha Tubulin antibody [DM1A] -

Loading Control (**ab7291**) were incubated overnight at 4°C at 1 in 1000 dilution and 1 in 20000 dilution respectively. Blots were developed with Goat anti-Rabbit IgG H&L (IRDye® 800CW) preadsorbed (**ab216773**) and Goat anti-Mouse IgG H&L (IRDye® 680RD) preadsorbed (**ab216776**) secondary antibodies at 1 in 20000 dilution for 1 hour at room temperature before imaging.

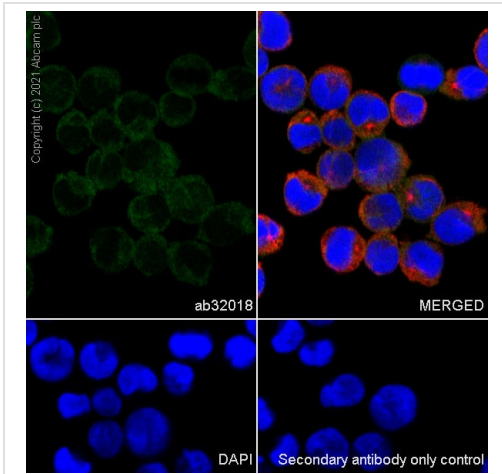


Immunohistochemistry (Formalin/PFA-fixed paraffin-embedded sections) - Anti-CrkL antibody [Y244] - BSA and Azide free (ab247210)

This data was developed using **ab32018**, the same antibody clone in a different buffer formulation.

Immunohistochemistry (Formalin/PFA-fixed paraffin-embedded sections) analysis of human colon tissue sections labeling CrkL with purified **ab32018** at 1/100 dilution (2.24 µg/mL). Heat mediated antigen retrieval was performed using Heat mediated antigen retrieval using Bond™ Epitope Retrieval Solution 2 (pH 9.0). Tissue was counterstained with Hematoxylin. Rabbit specific IHC polymer detection kit HRP/DAB (**ab209101**) secondary antibody was used at 1/0 dilution. PBS instead of the primary antibody was used as the negative control.

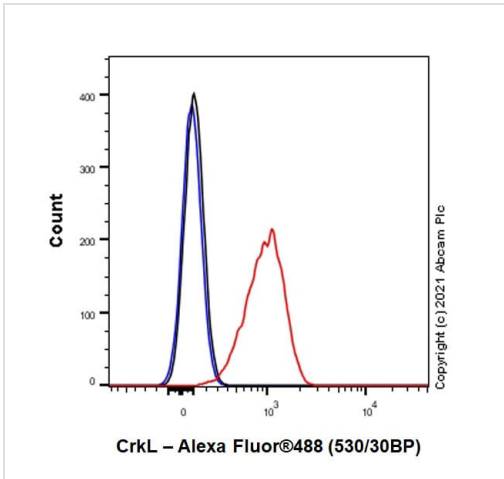
The immunostaining was performed on a Leica Biosystems BOND® RX instrument.



Immunocytochemistry/ Immunofluorescence - Anti-CrkL antibody [Y244] - BSA and Azide free (ab247210)

This data was developed using **ab32018**, the same antibody clone in a different buffer formulation.

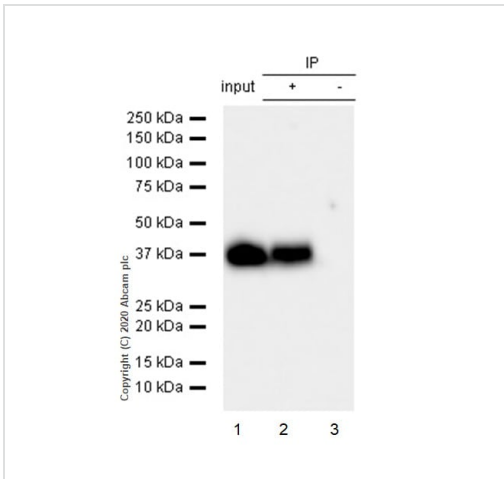
Immunocytochemistry analysis of K-562 (Human chronic myelogenous leukemia lymphoblast) cells labeling CrkL with purified **ab32018** at 1/50 dilution (4.5 µg/mL). Cells were fixed in 100% Methanol and permeabilized with 0.1% tritonX-100. Cells were counterstained with Ab195889 Anti-alpha Tubulin antibody [DM1A] - Microtubule Marker (Alexa Fluor® 594) 1/200 (2.5 µg/mL). Goat anti rabbit IgG (Alexa Fluor® 488, **ab150077**) was used as the secondary antibody at 1/1000 (2 µg/mL) dilution. DAPI (blue) was used as nuclear counterstain. PBS instead of the primary antibody was used as the secondary antibody only control.



Flow Cytometry - Anti-CrkL antibody [Y244] - BSA and Azide free (ab247210)

This data was developed using **ab32018**, the same antibody clone in a different buffer formulation.

Flow Cytometry analysis of K-562 (Human chronic myelogenous leukemia lymphoblast) cells labelling CrkL with purified **ab32018** at 1/20 dilution (10 µg/mL) (Red). Cells were fixed with 4% Paraformaldehyde and permeabilised with 90% Methanol. A Goat anti rabbit IgG (Alexa Fluor® 488, **ab150077**) secondary antibody was used at 1/2000. Isotype control - Rabbit monoclonal IgG (Black). Unlabelled control - Cell without incubation with primary antibody and secondary antibody (Blue).



Immunoprecipitation - Anti-CrkL antibody [Y244] - BSA and Azide free (ab247210)

This data was developed using **ab32018**, the same antibody clone in a different buffer formulation.

Purified **ab32018** at 1/50 dilution (2µg) immunoprecipitating CrkL in K-562 whole cell lysate.

Lane 1 (input): K-562 (Human chronic myelogenous leukemia lymphoblast) whole cell lysate 10µg

Lane 2 (+): **ab32018** + K-562 whole cell lysate.

Lane 3 (-): Rabbit monoclonal IgG (**ab172730**) instead of **ab32018** in K-562 whole cell lysate.

VeriBlot for IP Detection Reagent (HRP) (**ab131366**) (1/1000 dilution) was used for Western blotting.

Blocking Buffer and concentration: 5% NFDm/TBST.

Diluting buffer and concentration: 5% NFDm/TBST.

Observed band size: 37 kDa

Why choose a recombinant antibody?



Research with confidence
Consistent and reproducible results



Long-term and scalable supply
Recombinant technology



Success from the first experiment
Confirmed specificity



Ethical standards compliant
Animal-free production

Anti-CrkL antibody [Y244] - BSA and Azide free
(ab247210)

Please note: All products are "FOR RESEARCH USE ONLY. NOT FOR USE IN DIAGNOSTIC PROCEDURES"

Our Abpromise to you: Quality guaranteed and expert technical support

- Replacement or refund for products not performing as stated on the datasheet
- Valid for 12 months from date of delivery
- Response to your inquiry within 24 hours
- We provide support in Chinese, English, French, German, Japanese and Spanish
- Extensive multi-media technical resources to help you
- We investigate all quality concerns to ensure our products perform to the highest standards

If the product does not perform as described on this datasheet, we will offer a refund or replacement. For full details of the Abpromise, please visit <https://www.abcam.co.jp/abpromise> or contact our technical team.

Terms and conditions

- Guarantee only valid for products bought direct from Abcam or one of our authorized distributors