

# Anti-CRF antibody [EPR23255-162] ab272391

リコンビナント **RabMAb**

**2 References**   [画像数 5](#)

### 製品の概要

製品名	Anti-CRF antibody [EPR23255-162]
製品の詳細	Rabbit monoclonal [EPR23255-162] to CRF
由来種	Rabbit
アプリケーション	<b>適用あり:</b> IHC-Fr, IHC-P <b>適用なし:</b> IP or WB
種交差性	<b>交差種:</b> Mouse, Rat <b>非交差種:</b> Human
免疫原	Synthetic peptide. This information is proprietary to Abcam and/or its suppliers.
ポジティブ・コントロール	IHC-P: Rat and mouse hypothalamus tissue. IHC-Fr: Rat and mouse hypothalamus tissue.
特記事項	This product is a recombinant monoclonal antibody, which offers several advantages including: <ul style="list-style-type: none"> <li>- High batch-to-batch consistency and reproducibility</li> <li>- Improved sensitivity and specificity</li> <li>- Long-term security of supply</li> <li>- Animal-free production</li> </ul> For more information <a href="#">see here</a> . Our RabMAb <sup>®</sup> technology is a patented hybridoma-based technology for making rabbit monoclonal antibodies. For details on our patents, please refer to <a href="#">RabMAb<sup>®</sup> patents</a> .

### 製品の特性

製品の状態	Liquid
保存方法	Shipped at 4°C. Store at +4°C short term (1-2 weeks). Upon delivery aliquot. Store at -20°C long term. Avoid freeze / thaw cycle.
バッファー	pH: 7.2 Preservative: 0.01% Sodium azide Constituents: PBS, 40% Glycerol, 0.05% BSA
精製度	Protein A purified
ポリ/モノ	モノクローナル
クローン名	EPR23255-162

アイソタイプ

IgG

## アプリケーション

**The Abpromise guarantee** Abpromise保証は、次のテスト済みアプリケーションにおけるab272391の使用に適用されます  
アプリケーションノートには、推奨の開始希釈率がありますが、適切な希釈率につきましてはご確認ください。

アプリケーション	Abreviews	特記事項
IHC-Fr		1/100.
IHC-P		1/1000. Perform heat mediated antigen retrieval with citrate buffer pH 6 before commencing with IHC staining protocol.

## 追加情報

Is unsuitable for IP or WB.

## ターゲット情報

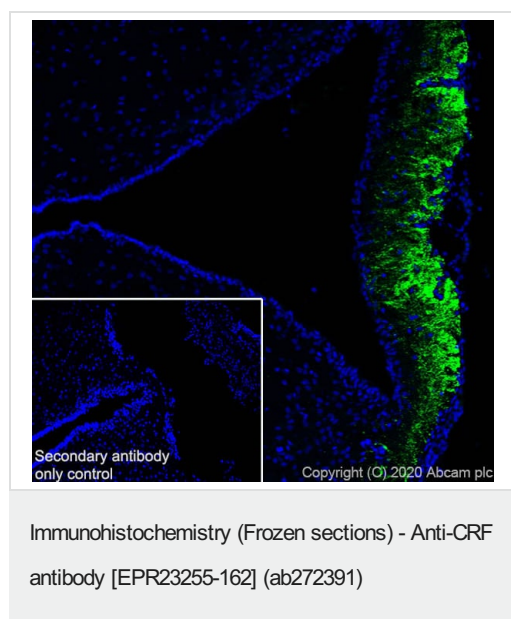
### 関連性

CRF precursor is a 41-amino acid peptide derived from a 196-amino acid preprohormone. CRF is a neuroendocrine hormone secreted by the paraventricular nucleus (PVN) of the hypothalamus and is a key player in the hypothalamic pituitary adrenal axis. It is also synthesized in peripheral tissues, such as T lymphocytes and is highly expressed in the placenta. Neuronal CRF is important in a variety of diverse roles including, memory, depression, stress, kidney function, parturition, metabolism and feeding (to mention a few).

### 細胞内局在

Cytoplasmic and Secreted

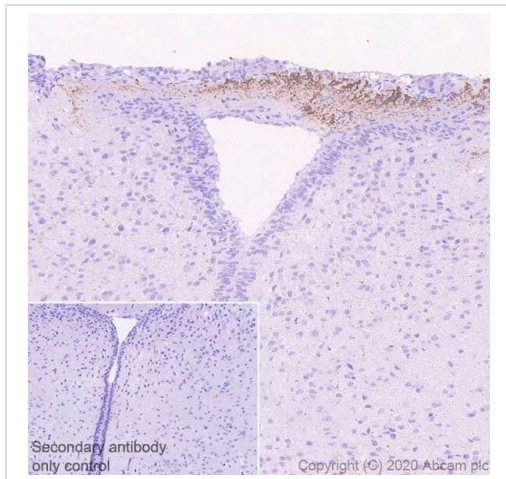
## 画像



Immunohistochemical analysis of 4% PFA-fixed, 0.2% Triton X-100 permeabilized frozen rat hypothalamus tissue labeling CRF with ab272391 at 1/100 dilution followed by **ab150077** AlexaFluor®488 Goat anti-Rabbit secondary at 1000 (2 µg/ml) dilution (Green). Positive staining on median eminence of rat hypothalamus is observed. The nuclear counterstain was DAPI (Blue).

Secondary antibody control: Secondary antibody is **ab150077** AlexaFluor®488 Goat anti-Rabbit secondary at 1000 (2 µg/ml) dilution.

Heat mediated antigen retrieval using sodium citrate buffer (10mM citrate pH 6.0 + 0.05% Tween-20).

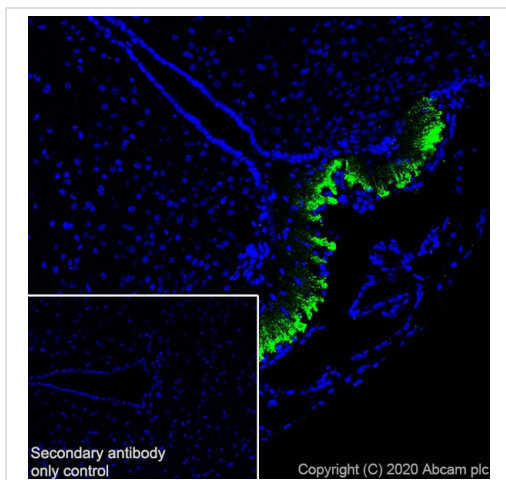


Immunohistochemistry (Formalin/PFA-fixed paraffin-embedded sections) - Anti-CRF antibody [EPR23255-162] (ab272391)

Immunohistochemical analysis of paraffin-embedded rat hypothalamus tissue labeling CRF with ab272391 at 1/1000 dilution followed by a ready to use Rabbit specific IHC polymer detection kit HRP/DAB (**ab209101**). Positive staining on rat hypothalamus is observed (PMID: 28883467). The section was incubated with ab272391 for 30 mins at room temperature. The immunostaining was performed on a Leica Biosystems BOND<sup>®</sup> RX instrument. Counterstained with hematoxylin.

Secondary antibody only control: Secondary antibody is a ready to use Rabbit specific IHC polymer detection kit HRP/DAB (**ab209101**).

Heat mediated antigen retrieval with Tris-EDTA buffer (pH 9.0, epitope retrieval solution2) for 20 mins.

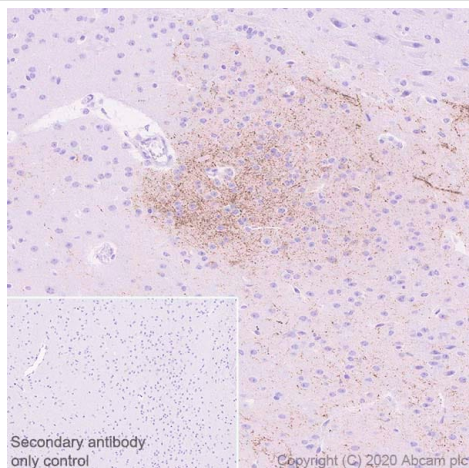


Immunohistochemistry (Frozen sections) - Anti-CRF antibody [EPR23255-162] (ab272391)

Immunohistochemical analysis of 4% PFA-fixed, 0.2% Triton X-100 permeabilized frozen mouse hypothalamus tissue labeling CRF with ab272391 at 1/100 dilution followed by **ab150077** AlexaFluor<sup>®</sup>488 Goat anti-Rabbit secondary at 1000 (2 µg/ml) dilution (Green). Positive staining on median eminence of mouse hypothalamus is observed. The nuclear counterstain was DAPI (Blue).

Secondary antibody control: Secondary antibody is **ab150077** AlexaFluor<sup>®</sup>488 Goat anti-Rabbit secondary at 1000 (2 µg/ml) dilution.

Heat mediated antigen retrieval using sodium citrate buffer (10mM citrate pH 6.0 + 0.05% Tween-20).



Immunohistochemistry (Formalin/PFA-fixed paraffin-embedded sections) - Anti-CRF antibody [EPR23255-162] (ab272391)

Immunohistochemical analysis of paraffin-embedded mouse hypothalamus tissue labeling CRF with ab272391 at 1/1000 dilution followed by a ready to use Rabbit specific IHC polymer detection kit HRP/DAB (**ab209101**). Positive staining on mouse hypothalamus is observed (PMID: 23724107). The section was incubated with ab272391 for 30 mins at room temperature. The immunostaining was performed on a Leica Biosystems BOND® RX instrument. Counterstained with hematoxylin.

Secondary antibody only control: Secondary antibody is a ready to use Rabbit specific IHC polymer detection kit HRP/DAB (**ab209101**).

Heat mediated antigen retrieval with Tris-EDTA buffer (pH 9.0, epitope retrieval solution2) for 20 mins.

### Why choose a recombinant antibody?



**Research with confidence**  
Consistent and reproducible results



**Long-term and scalable supply**  
Recombinant technology



**Success from the first experiment**  
Confirmed specificity



**Ethical standards compliant**  
Animal-free production

Anti-CRF antibody [EPR23255-162] (ab272391)

**Please note:** All products are "FOR RESEARCH USE ONLY. NOT FOR USE IN DIAGNOSTIC PROCEDURES"

### Our Abpromise to you: Quality guaranteed and expert technical support

- Replacement or refund for products not performing as stated on the datasheet
- Valid for 12 months from date of delivery
- Response to your inquiry within 24 hours
- We provide support in Chinese, English, French, German, Japanese and Spanish
- Extensive multi-media technical resources to help you
- We investigate all quality concerns to ensure our products perform to the highest standards

If the product does not perform as described on this datasheet, we will offer a refund or replacement. For full details of the Abpromise, please visit <https://www.abcam.co.jp/abpromise> or contact our technical team.

## Terms and conditions

---

- Guarantee only valid for products bought direct from Abcam or one of our authorized distributors