


Anti-CREBBP antibody ab2832

★★★★★ [5 Abreviews](#) [57 References](#) [画像数 6](#)

製品の概要

| | |
|----------|--|
| 製品名 | Anti-CREBBP antibody |
| 製品の詳細 | Rabbit polyclonal to CREBBP |
| 由来種 | Rabbit |
| アプリケーション | 適用あり: WB, IHC-P, ICC/IF |
| 種交差性 | 交差種: Mouse, Human 交差が予測される動物種: Non human primates  |
| 免疫原 | Synthetic peptide corresponding to Human CREBBP aa 162-176. Sequence: ATSSPATSQTGPGIC (Peptide available as ab4916) |

 [Run BLAST with](#)

 [Run BLAST with](#)

特記事項

The Life Science industry has been in the grips of a reproducibility crisis for a number of years. Abcam is leading the way in addressing this with our range of recombinant monoclonal antibodies and knockout edited cell lines for gold-standard validation. Please check that this product meets your needs before purchasing.

If you have any questions, special requirements or concerns, please send us an inquiry and/or contact our Support team ahead of purchase. Recommended alternatives for this product can be found below, along with publications, customer reviews and Q&As

製品の特性

| | |
|---------|---|
| 製品の状態 | Liquid |
| 保存方法 | Shipped at 4°C. Store at +4°C short term (1-2 weeks). Upon delivery aliquot. Store at -20°C or -80°C. Avoid freeze / thaw cycle. |
| バッファー | Preservative: 0.05% Sodium azide Constituents: 0.1% BSA, 99% PBS |
| 精製度 | Immunogen affinity purified |
| 一次抗体 備考 | Cyclic AMP-responsive enhancer binding protein (CREB) binding protein (CBP) and p300 are closely related transcriptional coactivators that have been shown to directly interact with many different DNA-binding transcription factors including nuclear hormone receptors, CREB (cyclic |

AMP-responsive enhancer binding protein), c-Fos, c-Jun/v-Jun, c-Myb/v-Myb, TFIIB and MyoD. Both CBP and p300 have been shown to display histone acetyltransferase (HAT) activity, capable of acetylating all four core histone particles in nucleosomes. As a result of HAT activity, it has been suggested CBP and p300 may play a direct role in activating chromatin for transcription. Single point mutations in CBP have been proposed as causative factors in the developmental abnormalities of Rubinstein-Taybi syndrome (RTS). Although both CBP and p300 appear to function similarly, the inability of p300 to rescue CBP malfunction in RTS suggests intrinsic functional differences between CBP and p300.

ポリモノ
アイソタイプ

ポリクローナル
IgG

アプリケーション

The Abpromise guarantee **Abpromise保証は、次のテスト済みアプリケーションにおけるab2832の使用に適用されます**
アプリケーションノートには、推奨の開始希釈率がありますが、適切な希釈率につきましてはご検討ください。

| アプリケーション | Abreviews | 特記事項 |
|----------|-----------|--|
| WB | ★★★★☆ (3) | Use a concentration of 1 - 2 µg/ml. Detects a band of approximately 265 kDa (predicted molecular weight: 265 kDa). |
| IHC-P | ★★★★★ (1) | 1/1000 - 1/5000. |
| ICC/IF | | 1/100. |

ターゲット情報

機能 Acetylates histones, giving a specific tag for transcriptional activation. Also acetylates non-histone proteins, like NCOA3 coactivator. Binds specifically to phosphorylated CREB and enhances its transcriptional activity toward cAMP-responsive genes. Acts as a coactivator of ALX1 in the presence of EP300.

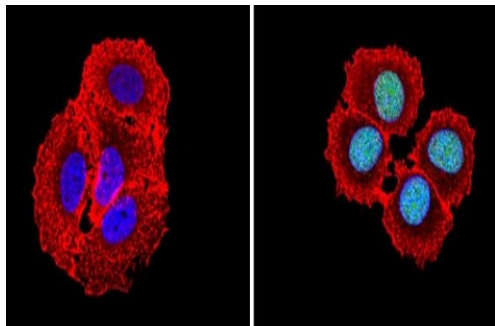
関連疾患 Note=Chromosomal aberrations involving CREBBP may be a cause of acute myeloid leukemias. Translocation t(8;16)(p11;p13) with MYST3/MOZ; translocation t(11;16)(q23;p13.3) with MLL/HRX; translocation t(10;16)(q22;p13) with MYST4/MORF. MYST3-CREBBP may induce leukemia by inhibiting RUNX1-mediated transcription. Defects in CREBBP are a cause of Rubinstein-Taybi syndrome type 1 (RSTS1) [MIM:180849]. RSTS1 is an autosomal dominant disorder characterized by craniofacial abnormalities, broad thumbs, broad big toes, mental retardation and a propensity for development of malignancies.

配列類似性 Contains 1 bromo domain.
Contains 1 KIX domain.
Contains 2 TAZ-type zinc fingers.
Contains 1 ZZ-type zinc finger.

ドメイン The KIX domain mediates binding to HIV-1 Tat.

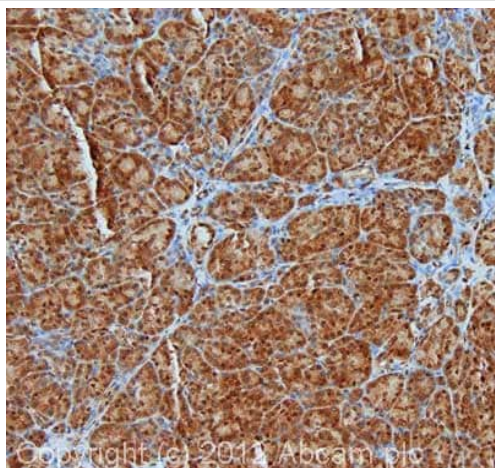
翻訳後修飾 Methylation of the KIX domain by CARM1 blocks association with CREB. This results in the blockade of CREB signaling, and in activation of apoptotic response.
Phosphorylated upon DNA damage, probably by ATM or ATR.
Sumoylation negatively regulates transcriptional activity via the recruitment of DAAX.

画像



Immunocytochemistry/ Immunofluorescence - Anti-CREBBP antibody (ab2832)

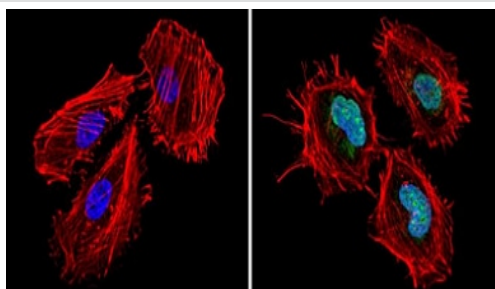
Immunofluorescent analysis of MCF-7 cells, labeling CREBBP with ab2832 (right) compared with a negative control without ab2832 (left). Cells were formalin fixed, permeabilized with 0.1% Triton X-100 for 5-10 minutes, and blocked with 3% BSA-PBS for 30 minutes at room temperature. Cells were incubated with anti-KAT3A/CBP diluted 1/100 in 3% BSA/PBS overnight at 4°C. Actin was stained using Alexa Fluor 554 (red) and nuclei were stained with DAPI (blue). The nuclear localization of KAT3A/CBP can be observed (green).



Immunohistochemistry (Formalin/PFA-fixed paraffin-embedded sections) - Anti-CREBBP antibody (ab2832)

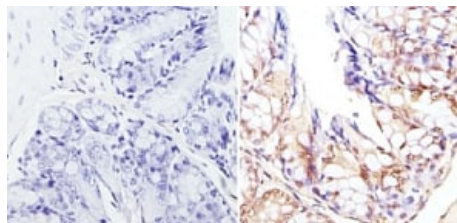
IHC image of CREBBP staining in human pancreas formalin fixed paraffin embedded tissue section, performed on a Leica BondTM system using the standard protocol F. The section was pre-treated using heat mediated antigen retrieval with sodium citrate buffer (pH6, epitope retrieval solution 1) for 20 mins. The section was then incubated with ab2832, 5µg/ml, for 15 mins at room temperature and detected using an HRP conjugated compact polymer system. DAB was used as the chromogen. The section was then counterstained with haematoxylin and mounted with DPX.

For other IHC staining systems (automated and non-automated) customers should optimize variable parameters such as antigen retrieval conditions, primary antibody concentration and antibody incubation times.



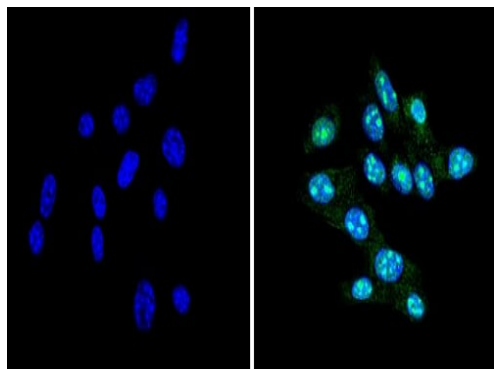
Immunocytochemistry/ Immunofluorescence - Anti-CREBBP antibody (ab2832)

Immunofluorescent analysis of HeLa cells, labeling CREBBP with ab2832 (right) compared with a negative control without ab2832 (left). Cells were formalin fixed, permeabilized with 0.1% Triton X-100 for 5-10 minutes, and blocked with 3% BSA-PBS for 30 minutes at room temperature. Cells were incubated with anti-KAT3A/CBP diluted 1/100 in 3% BSA/PBS overnight at 4°C. Actin was stained using Alexa Fluor 554 (red) and nuclei were stained with DAPI (blue). The nuclear localization of KAT3A/CBP can be observed (green).



Immunohistochemistry (Formalin/PFA-fixed paraffin-embedded sections) - Anti-CREBBP antibody (ab2832)

Immunohistochemical analysis of FFPE mouse colon tissue, labeling CREBBP with ab2832 (right) compared with a negative control without ab2832 (left). Heat antigen retrieval performed with 10mM Sodium Citrate (pH 6) for 8-15 minutes. Tissue blocked with 3% H₂O₂-methanol for 15 minutes at room temperature. Incubation with ab2832 diluted 1/2000 in 3% BSA-PBS overnight at 4°C. Counterstaining with hematoxylin.



Immunocytochemistry/ Immunofluorescence - Anti-CREBBP antibody (ab2832)

Immunofluorescent analysis of NIH-3T3 cells, labeling CREBBP with ab2832 (right) compared with a negative control without ab2832 (left). Cells were formalin fixed, permeabilized with 0.1% Triton X-100 for 5-10 minutes, and blocked with 3% BSA-PBS for 30 minutes at room temperature. Cells were incubated with anti-KAT3A/CBP diluted 1/100 in 3% BSA/PBS overnight at 4°C. Nuclei were stained with DAPI (blue).



Western blot - Anti-CREBBP antibody (ab2832)

ab2832 using HeLa cell lysate. ab2832 using HeLa cell lysate.

Please note: All products are "FOR RESEARCH USE ONLY. NOT FOR USE IN DIAGNOSTIC PROCEDURES"

Our Abpromise to you: Quality guaranteed and expert technical support

- Replacement or refund for products not performing as stated on the datasheet
- Valid for 12 months from date of delivery
- Response to your inquiry within 24 hours
- We provide support in Chinese, English, French, German, Japanese and Spanish
- Extensive multi-media technical resources to help you
- We investigate all quality concerns to ensure our products perform to the highest standards

If the product does not perform as described on this datasheet, we will offer a refund or replacement. For full details of the Abpromise,

please visit <https://www.abcam.co.jp/abpromise> or contact our technical team.

Terms and conditions

- Guarantee only valid for products bought direct from Abcam or one of our authorized distributors